

SUMMARY REPORT

SPAIN. LEB ORO

2019–2020

ADVANCE PRO BASKETBALL

TEAMS RANKINGS

POINTS ANALYSIS.....	2
FIELD GOALS ANALYSIS.....	3
ATTACKS ANALYSIS.....	4
DEFENSE ANALYSIS.....	5
REBOUNDS, TURNOVERS, STEALS, FOULS.....	6
FIELD GOALS PLAYTYPES IN ATTACK.....	7
FIELD GOALS PLAYTYPES IN DEFENSE.....	8

PLAYERS RANKINGS

POINTS, ASSISTS, ATTACKS.....	9
REBOUNDS, TURNOVERS, FOULS, DEFENSE.....	10
FIELD GOALS PLAYTYPES.....	11

COMPARABLE TABLE

BOXSCORE. CENTERS.....	12
BOXSCORE. FORWARDS.....	13
BOXSCORE. GUARDS.....	15
FG PLAYTYPES. CENTERS.....	17
FG PLAYTYPES. FORWARDS.....	18
FG PLAYTYPES. GUARDS.....	20

InStat Index

	InStat Index	Matches played
1 Breogan	239	24
2 Gipuzkoa	238	24
3 Melilla	237	24
4 Valladolid	235	24
5 Maristas	234	24
6 Leyma	232	24
7 Mallorca Palma	232	24
8 Caceres	231	24
9 Castello	230	24
10 Oviedo Baloncesto	230	22
11 Alicante	230	24
12 Granada	230	24
13 Ourense	230	24
14 Penas	229	24
15 Lleida	228	23
16 Real Canoe	226	24
17 Almansa	-	23
18 Marin	-	24
AVERAGE	206	24

Points

		/100 poss
1 Maristas	82.50	101.28
2 Breogan	81.25	97.55
3 Alicante	80.46	94.70
4 Valladolid	79.88	94.81
5 Castello	79.21	93.28
6 Real Canoe	76.83	91.97
7 Almansa	76.78	90.75
8 Mallorca Palma	76.62	90.76
9 Caceres	76.54	91.75
10 Melilla	76.12	91.29
11 Gipuzkoa	75.88	91.79
12 Leyma	74.21	88.96
13 Penas	73.33	86.35
14 Lleida	72.43	87.50
15 Granada	72.25	88.97
16 Ourense	71.25	87.38
17 Oviedo Baloncesto	69.23	83.73
18 Marin	67.08	81.69
AVERAGE	75.66	90.81

Opp Points

		/100 poss
1 Gipuzkoa	69.12	83.90
2 Melilla	71.21	85.16
3 Mallorca Palma	72.17	86.09
4 Caceres	72.88	87.32
5 Granada	73.04	91.87
6 Real Canoe	74.29	87.52
7 Alicante	74.42	86.87
8 Ourense	74.75	95.08
9 Valladolid	75.08	89.69
10 Breogan	75.54	91.01
11 Oviedo Baloncesto	75.59	89.60
12 Lleida	76.83	92.57
13 Penas	77.21	91.96
14 Maristas	77.92	95.81
15 Marin	78.33	93.85
16 Real Canoe	80.92	96.20
17 Castello	81.71	95.99
18 Almansa	81.78	95.38
AVERAGE	75.71	90.87

+/-

		/100 poss
1 Gipuzkoa	6.8	7.9
2 Alicante	6.0	7.8
3 Breogan	5.7	6.5
4 Melilla	4.9	6.1
5 Valladolid	4.8	5.1
6 Maristas	4.6	5.5
7 Mallorca Palma	4.5	4.7
8 Caceres	3.7	4.4
9 Leyma	-0.1	1.4
10 Granada	-0.8	-2.9
11 Castello	-2.5	-2.7
12 Ourense	-3.5	-7.7
13 Penas	-3.9	-5.6
14 Real Canoe	-4.1	-4.2
15 Lleida	-4.4	-5.1
16 Almansa	-5.0	-4.6
17 Oviedo Baloncesto	-6.4	-5.9
18 Marin	-11.3	-12.2

Points off turnovers

1 Breogan	11.42
2 Castello	11.38
3 Gipuzkoa	11.38
4 Almansa	11.35
5 Valladolid	11.21
6 Melilla	11.17
7 Mallorca Palma	11.04
8 Caceres	10.92
9 Leyma	10.62
10 Alicante	10.58
11 Lleida	10.57
12 Marin	9.83
13 Maristas	9.71
14 Real Canoe	9.67
15 Granada	8.62
16 Penas	8.54
17 Oviedo Baloncesto	7.86
18 Ourense	7.12
AVERAGE	10.17

Paint points

		Share
1 Alicante	37.83	47.0%
2 Breogan	34.58	42.6%
3 Gipuzkoa	34.42	45.4%
4 Almansa	34.26	44.6%
5 Leyma	33.58	45.2%
6 Maristas	33.42	40.5%
7 Castello	32.08	40.5%
8 Caceres	31.67	41.6%
9 Lleida	31.57	43.6%
10 Marin	31.50	47.0%
11 Real Canoe	31.33	40.8%
12 Caceres	30.92	40.4%
13 Ourense	30.42	42.7%
14 Valladolid	30.33	38.0%
15 Mallorca Palma	29.92	39.0%
16 Penas	28.33	38.6%
17 Granada	27.67	38.3%
18 Oviedo Baloncesto	24.18	34.9%
AVERAGE	31.56	41.7%

Second chance points

		Share
1 Granada	9.29	12.9%
2 Caceres	8.92	11.7%
3 Valladolid	8.83	11.1%
4 Real Canoe	8.75	11.4%
5 Maristas	8.75	10.6%
6 Leyma	8.62	11.6%
7 Almansa	8.09	10.5%
8 Melilla	7.75	10.2%
9 Lleida	7.57	10.5%
10 Breogan	7.46	9.2%
11 Marin	7.17	10.7%
12 Penas	7.12	9.7%
13 Gipuzkoa	7.08	9.3%
14 Alicante	7.04	8.7%
15 Ourense	6.96	9.8%
16 Castello	6.46	8.2%
17 Mallorca Palma	6.33	8.3%
18 Oviedo Baloncesto	4.32	6.2%
AVERAGE	7.58	10.0%

Starting lineup points

		Share
1 Valladolid	54.29	68.0%
2 Gipuzkoa	50.75	66.9%
3 Leyma	50.46	68.0%
4 Lleida	48.83	67.4%
5 Breogan	47.79	58.8%
6 Oviedo Baloncesto	47.73	68.9%
7 Maristas	46.58	56.5%
8 Real Canoe	46.29	60.2%
9 Almansa	45.74	59.6%
10 Alicante	45.67	56.8%
11 Caceres	45.12	58.9%
12 Marin	44.92	67.0%
13 Melilla	44.58	58.6%
14 Ourense	44.58	62.6%
15 Penas	43.67	59.6%
16 Castello	43.42	54.8%
17 Granada	38.88	53.8%
18 Mallorca Palma	36.83	48.1%
AVERAGE	45.90	60.7%

Bench points

		Share
1 Mallorca Palma	39.79	51.9%
2 Maristas	35.92	43.5%
3 Castello	35.79	45.2%
4 Alicante	34.79	43.2%
5 Breogan	33.46	41.2%
6 Granada	33.38	46.2%
7 Melilla	31.54	41.4%
8 Caceres	31.42	41.1%
9 Almansa	31.04	40.4%
10 Real Canoe	30.54	39.8%
11 Penas	29.67	40.5%
12 Ourense	26.67	37.4%
13 Valladolid	25.58	32.0%
14 Gipuzkoa	25.12	33.1%
15 Leyma	23.75	32.0%
16 Lleida	23.61	32.6%
17 Marin	22.17	33.1%
18 Oviedo Baloncesto	21.50	31.1%
AVERAGE	29.76	39.3%

Field goals

1	Maristas	29.8 – 63.0	47.3%
2	Breogan	30.0 – 65.2	46.0%
3	Alicante	29.1 – 64.3	45.3%
4	Ourense	26.3 – 58.3	45.1%
5	Gipuzkoa	28.3 – 63.9	44.3%
6	Melilla	28.7 – 65.0	44.2%
7	Castello	27.8 – 63.3	43.9%
8	Mallorca Palma	26.9 – 62.5	43.0%
9	Lleida	26.9 – 63.3	42.5%
10	Leyma	26.6 – 62.8	42.4%
11	Caceres	26.1 – 62.2	42.0%
12	Real Canoe	27.5 – 65.7	41.9%
13	Penas	26.6 – 63.6	41.8%
14	Valladolid	27.7 – 67.2	41.2%
15	Granada	25.2 – 62.2	40.5%
16	Almansa	26.9 – 66.6	40.4%
17	Oviedo Baloncesto	24.1 – 60.0	40.2%
18	Marin	24.7 – 64.2	38.5%
AVERAGE		27.2 – 63.5	42.8%

3-pt field goals

1	Breogan	10.6 – 27.8	38.1%
2	Castello	9.0 – 24.0	37.5%
3	Maristas	8.5 – 22.8	37.3%
4	Ourense	8.8 – 24.9	35.3%
5	Penas	7.8 – 22.8	34.2%
6	Granada	8.2 – 24.1	34.0%
7	Lleida	8.2 – 24.1	34.0%
8	Melilla	8.0 – 23.6	33.9%
9	Mallorca Palma	9.0 – 26.6	33.8%
10	Caceres	8.6 – 25.8	33.3%
11	Gipuzkoa	7.6 – 23.5	32.3%
12	Real Canoe	8.5 – 26.4	32.2%
13	Valladolid	8.7 – 27.1	32.1%
14	Almansa	7.2 – 22.8	31.6%
15	Alicante	7.7 – 24.7	31.2%
16	Oviedo Baloncesto	8.1 – 26.3	30.8%
17	Leyma	7.3 – 24.2	30.2%
18	Marin	6.5 – 22.5	28.9%
AVERAGE		8.2 – 24.7	33.2%

2-pt field goals

1	Alicante	21.5 – 39.6	54.3%
2	Maristas	21.2 – 40.3	52.6%
3	Ourense	17.5 – 33.4	52.4%
4	Breogan	19.4 – 37.4	51.9%
5	Gipuzkoa	20.7 – 40.4	51.2%
6	Leyma	19.3 – 38.6	50.0%
7	Mallorca Palma	17.9 – 35.9	49.9%
8	Melilla	20.6 – 41.5	49.6%
9	Real Canoe	19.0 – 39.3	48.3%
10	Caceres	17.5 – 36.3	48.2%
11	Castello	18.9 – 39.3	48.1%
12	Lleida	18.7 – 39.1	47.8%
13	Oviedo Baloncesto	16.0 – 33.7	47.5%
14	Valladolid	19.0 – 40.1	47.4%
15	Penas	18.8 – 40.8	46.1%
16	Almansa	19.7 – 43.8	45.0%
17	Granada	17.0 – 38.1	44.6%
18	Marin	18.1 – 41.7	43.4%
AVERAGE		18.9 – 38.8	48.7%

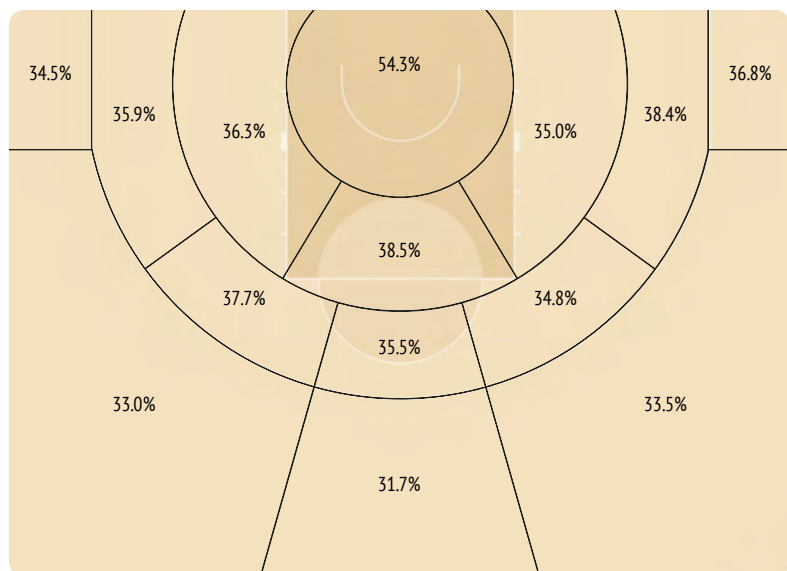
Free throws

1	Maristas	14.5 – 18.2	79.7%
2	Alicante	14.5 – 19.1	75.9%
3	Granada	13.8 – 18.3	75.4%
4	Mallorca Palma	13.8 – 18.4	75.0%
5	Oviedo Baloncesto	12.8 – 17.2	74.4%
6	Almansa	15.9 – 21.6	73.6%
7	Valladolid	15.8 – 21.5	73.5%
8	Penas	12.4 – 16.9	73.4%
9	Real Canoe	13.4 – 18.5	72.4%
10	Gipuzkoa	11.7 – 16.4	71.3%
11	Breogan	10.5 – 14.8	70.9%
12	Caceres	15.7 – 22.3	70.4%
13	Lleida	10.5 – 15.0	70.0%
14	Castello	14.6 – 20.9	69.9%
15	Leyma	13.8 – 19.9	69.3%
16	Ourense	9.8 – 14.5	67.6%
17	Melilla	10.8 – 16.2	66.7%
18	Marin	11.2 – 16.8	66.7%
AVERAGE		13.1 – 18.1	72.4%

Assists

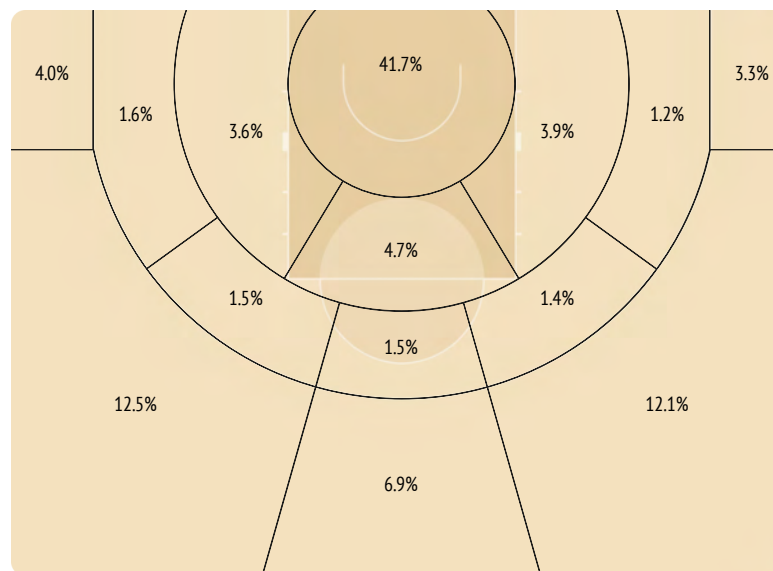
1	Melilla	20.1
2	Breogan	19.5
3	Maristas	18.5
4	Gipuzkoa	17.5
5	Ourense	17.5
6	Castello	17.3
7	Alicante	17.3
8	Almansa	16.6
9	Oviedo Baloncesto	16.5
10	Mallorca Palma	16.4
11	Leyma	16.4
12	Penas	16.3
13	Valladolid	16.1
14	Real Canoe	15.9
15	Granada	15.6
16	Lleida	15.4
17	Caceres	13.8
18	Marin	12.7
AVERAGE		16.6

Field goals - zones efficiency



100% – %FG - LEAGUE AVERAGE

Field goals - share by zones



100% – %FG - LEAGUE AVERAGE

Positional attacks

				Points	Turnovers
1	Breogan	40.0-74.5	53.7%	61.9	10.9
2	Maristas	41.9-74.9	55.9%	61.3	10.0
3	Alicante	39.6-75.8	52.2%	57.8	11.8
4	Valladolid	40.0-76.3	52.4%	57.5	9.3
5	Gipuzkoa	38.3-74.3	51.5%	57.3	10.9
6	Real Canoe	38.3-74.5	51.4%	57.0	10.3
7	Castello	39.6-76.5	51.8%	57.0	11.8
8	Ourense	39.3-75.3	52.2%	56.9	12.5
9	Melilla	37.8-73.8	51.2%	56.5	12.1
10	Lleida	37.7-76.3	49.4%	56.4	12.7
11	Mallorca Palma	39.3-76.2	51.6%	56.1	12.5
12	Caceres	40.1-77.8	51.5%	56.0	12.3
13	Almansa	38.4-76.3	50.3%	54.1	10.9
14	Penas	38.0-76.5	49.7%	53.9	11.7
15	Granada	39.8-75.7	52.6%	53.8	10.2
16	Leyma	38.0-73.8	51.5%	52.2	11.4
17	Oviedo Baloncesto	36.3-76.3	47.6%	52.1	12.2
18	Marin	33.0-72.5	45.5%	48.9	11.6
AVERAGE		38.6-75.4	51.2%	55.9	11.4

Transitions

				Points	Turnovers
1	Melilla	6.0-9.5	63.2%	8.9	1.4
2	Breogan	6.0-8.8	68.2%	8.8	1.1
3	Leyma	5.8-9.6	60.4%	8.3	1.4
4	Alicante	5.8-9.2	63.0%	8.2	1.4
5	Castello	5.3-8.4	63.1%	7.6	1.0
6	Penas	5.1-8.4	60.7%	7.0	1.3
7	Marin	5.9-9.7	60.8%	7.0	1.3
8	Gipuzkoa	5.2-8.3	62.7%	6.8	0.7
9	Almansa	5.3-8.4	63.1%	6.8	1.3
10	Mallorca Palma	5.1-8.2	62.2%	6.8	1.4
11	Maristas	4.4-6.6	66.7%	6.7	1.0
12	Valladolid	5.2-8.0	65.0%	6.5	1.1
13	Real Canoe	5.4-9.0	60.0%	6.4	1.1
14	Lleida	5.9-6.5	60.0%	5.6	1.0
15	Caceres	3.5-5.6	62.5%	4.9	0.7
16	Granada	3.3-5.5	60.0%	4.7	0.9
17	Ourense	3.8-6.2	61.3%	4.6	1.0
18	Oviedo Baloncesto	3.4-6.4	53.1%	4.3	1.2
AVERAGE		4.9-7.9	62.0%	6.6	1.1

Baseline combinations

				Points	Turnovers
1	Breogan	2.3-4.2	54.8%	4.1	0.6
2	Leyma	2.2-4.2	52.4%	3.9	0.7
3	Castello	2.1-4.0	52.5%	3.7	0.6
4	Lleida	1.8-3.8	47.4%	3.5	0.7
5	Granada	2.2-4.3	51.2%	3.4	0.7
6	Alicante	2.1-4.0	52.5%	3.4	0.5
7	Ourense	1.9-4.2	45.2%	3.3	0.9
8	Valladolid	1.9-3.3	57.6%	3.3	0.3
9	Caceres	1.9-3.7	51.4%	3.3	0.6
10	Gipuzkoa	1.8-3.0	60.0%	3.2	0.4
11	Mallorca Palma	1.7-4.1	41.5%	3.1	0.6
12	Melilla	1.8-4.3	41.9%	3.0	0.8
13	Penas	1.9-3.9	48.7%	2.9	0.5
14	Oviedo Baloncesto	1.4-4.0	35.0%	2.8	0.7
15	Maristas	1.8-3.2	56.3%	2.8	0.2
16	Almansa	1.7-3.5	48.6%	2.3	0.6
17	Marin	1.4-3.4	41.2%	2.2	0.5
18	Real Canoe	1.3-3.4	38.2%	1.9	0.6
AVERAGE		1.8-3.8	47.4%	3.1	0.6

Sideline combinations

				Points	Turnovers
1	Breogan	3.2-5.9	54.2%	6.0	0.9
2	Real Canoe	3.1-6.7	46.3%	5.5	0.9
3	Mallorca Palma	3.1-6.3	49.2%	5.1	1.0
4	Alicante	2.9-5.6	51.8%	5.0	1.0
5	Caceres	2.8-5.8	48.3%	4.7	0.9
6	Granada	2.8-5.7	49.1%	4.6	0.8
7	Penas	2.7-6.1	44.3%	4.3	1.0
8	Maristas	2.5-4.8	52.1%	4.1	0.7
9	Lleida	2.7-5.6	48.2%	4.0	0.9
10	Valladolid	2.2-4.8	45.8%	3.9	0.5
11	Marin	2.3-4.7	48.9%	3.9	0.5
12	Gipuzkoa	2.3-5.1	45.1%	3.8	0.8
13	Castello	2.8-5.6	50.0%	3.8	1.0
14	Ourense	2.7-5.3	50.9%	3.8	1.0
15	Leyma	2.5-5.0	50.0%	3.7	0.8
16	Oviedo Baloncesto	2.3-5.2	44.2%	3.6	1.0
17	Almansa	2.2-4.8	45.8%	3.4	0.6
18	Melilla	2.4-4.3	55.8%	3.0	0.5
AVERAGE		2.6-5.4	48.1%	4.2	0.8

Uncontested FG

1	Ourense	3.6-8.2	43.9%
2	Maristas	6.6-15.1	43.7%
3	Granada	5.7-13.8	41.3%
4	Melilla	7.5-18.5	40.5%
5	Real Canoe	4.6-11.8	39.0%
6	Breogan	5.0-12.9	38.8%
7	Mallorca Palma	5.6-14.5	38.6%
8	Castello	5.5-14.6	37.7%
9	Penas	5.4-14.5	37.2%
10	Lleida	4.8-13.0	36.9%
11	Valladolid	3.6-10.0	36.0%
12	Alicante	4.5-12.6	35.7%
13	Almansa	4.3-12.2	35.2%
14	Caceres	3.0-8.6	34.9%
15	Gipuzkoa	4.0-11.5	34.8%
16	Leyma	4.4-13.3	33.1%
17	Oviedo Baloncesto	4.5-13.6	33.1%
18	Marin	3.3-11.2	29.5%
AVERAGE		4.8-12.8	37.5%

Contested FG

1	Breogan	23.6-50.8	46.5%
2	Maristas	21.3-46.1	46.2%
3	Alicante	22.8-49.8	45.8%
4	Gipuzkoa	22.8-50.8	44.9%
5	Ourense	21.8-49.1	44.4%
6	Castello	20.8-47.0	44.3%
7	Melilla	19.5-44.9	43.4%
8	Mallorca Palma	20.3-47.0	43.2%
9	Leyma	20.7-48.0	43.1%
10	Lleida	20.7-48.9	42.3%
11	Penas	20.0-47.8	41.8%
12	Caceres	21.2-51.7	41.0%
13	Real Canoe	21.1-52.1	40.5%
14	Oviedo Baloncesto	17.9-44.6	40.1%
15	Valladolid	22.1-55.3	40.0%
16	Almansa	20.4-52.2	39.1%
17	Granada	18.2-47.2	38.6%
18	Marin	19.4-51.1	38.0%
AVERAGE		20.8-49.1	42.4%

Opp Points

	Points	/100 poss
1 Gipuzkoa	69.12	83.90
2 Melilla	71.21	85.16
3 Mallorca Palma	72.17	86.09
4 Caceres	72.88	87.32
5 Granada	73.04	91.87
6 Leyma	74.29	87.52
7 Alicante	74.42	86.87
8 Ourense	74.75	95.08
9 Valladolid	75.08	89.69
10 Breogan	75.54	91.01
11 Oviedo Baloncesto	75.59	89.60
12 Lleida	76.83	92.57
13 Penas	77.21	91.96
14 Maristas	77.92	95.81
15 Marin	78.33	93.85
16 Real Canoe	80.92	96.20
17 Castello	81.71	95.99
18 Almansa	81.78	95.38
AVERAGE	75.71	90.87

Opponents field goals

1 Alicante	26.5 – 66.5	39.8%
2 Melilla	25.0 – 62.6	39.9%
3 Gipuzkoa	25.2 – 63.0	40.0%
4 Mallorca Palma	25.2 – 62.8	40.1%
5 Leyma	26.9 – 64.5	41.7%
6 Breogan	24.9 – 59.3	42.0%
7 Oviedo Baloncesto	28.1 – 66.1	42.5%
8 Ourense	27.4 – 64.1	42.7%
9 Valladolid	26.3 – 61.5	42.8%
10 Granada	25.3 – 59.1	42.8%
11 Caceres	27.1 – 62.8	43.2%
12 Lleida	28.7 – 64.8	44.3%
13 Penas	28.3 – 63.8	44.4%
14 Castello	29.4 – 66.1	44.5%
15 Almansa	29.8 – 66.9	44.5%
16 Marin	28.0 – 62.4	44.9%
17 Maristas	28.8 – 63.8	45.1%
18 Real Canoe	28.7 – 63.6	45.1%
AVERAGE	27.2 – 63.5	42.8%

Opp 3-pt field goals

1 Gipuzkoa	6.7 – 23.5	28.5%
2 Mallorca Palma	7.3 – 24.3	30.0%
3 Oviedo Baloncesto	7.2 – 23.7	30.4%
4 Alicante	8.0 – 25.6	31.3%
5 Melilla	7.7 – 24.3	31.7%
6 Caceres	7.7 – 24.0	32.1%
7 Ourense	8.7 – 26.4	33.0%
8 Penas	8.3 – 24.8	33.5%
9 Almansa	9.4 – 27.9	33.7%
10 Leyma	7.6 – 22.5	33.8%
11 Valladolid	8.4 – 24.6	34.1%
12 Maristas	8.3 – 24.2	34.3%
13 Granada	8.3 – 24.0	34.6%
14 Lleida	8.6 – 24.2	35.5%
15 Marin	8.1 – 22.6	35.8%
16 Breogan	8.9 – 24.7	36.0%
17 Real Canoe	9.3 – 25.4	36.6%
18 Castello	10.0 – 27.2	36.8%
AVERAGE	8.2 – 24.7	33.2%

Opp Free throws

1 Leyma	12.9 – 18.6	69.4%
2 Granada	14.2 – 20.4	69.6%
3 Almansa	12.8 – 18.4	69.6%
4 Valladolid	14.0 – 20.1	69.7%
5 Oviedo Baloncesto	12.3 – 17.5	70.3%
6 Castello	12.9 – 18.3	70.5%
7 Penas	12.3 – 17.4	70.7%
8 Marin	14.3 – 20.2	70.8%
9 Lleida	10.9 – 15.4	70.8%
10 Alicante	13.3 – 18.7	71.1%
11 Gipuzkoa	12.0 – 16.6	72.3%
12 Ourense	11.2 – 15.4	72.7%
13 Maristas	12.0 – 16.2	74.1%
14 Real Canoe	14.3 – 19.2	74.5%
15 Caceres	11.0 – 14.6	75.3%
16 Melilla	13.5 – 17.9	75.4%
17 Breogan	16.9 – 22.4	75.4%
18 Mallorca Palma	14.5 – 19.2	75.5%
AVERAGE	13.1 – 18.1	72.4%

Opp Assists

1 Gipuzkoa	14.9
2 Breogan	15.1
3 Caceres	15.1
4 Oviedo Baloncesto	15.5
5 Mallorca Palma	16.0
6 Maristas	16.0
7 Melilla	16.1
8 Alicante	16.3
9 Leyma	16.5
10 Penas	16.7
11 Granada	16.7
12 Ourense	16.9
13 Marin	17.1
14 Lleida	17.7
15 Valladolid	17.8
16 Castello	18.2
17 Real Canoe	18.3
18 Almansa	18.6
AVERAGE	16.6

Opp Points off turnovers

1 Breogan	8.04
2 Gipuzkoa	8.46
3 Melilla	8.79
4 Granada	8.83
5 Valladolid	8.88
6 Real Canoe	9.04
7 Almansa	9.65
8 Alicante	9.83
9 Leyma	9.88
10 Maristas	9.92
11 Mallorca Palma	9.96
12 Caceres	10.12
13 Ourense	11.46
14 Lleida	11.74
15 Marin	11.75
16 Penas	12.08
17 Oviedo Baloncesto	12.45
18 Castello	12.46
AVERAGE	10.19

Opp Paint points

1 Breogan	24.75
2 Melilla	27.75
3 Granada	28.50
4 Mallorca Palma	28.83
5 Gipuzkoa	29.25
6 Valladolid	29.67
7 Alicante	29.67
8 Ourense	31.00
9 Leyma	31.92
10 Caceres	32.50
11 Lleida	32.78
12 Castello	32.92
13 Real Canoe	33.42
14 Marin	33.50
15 Penas	35.17
16 Maristas	35.33
17 Almansa	35.57
18 Oviedo Baloncesto	36.64
AVERAGE	31.62

Opp Second chance points

1 Granada	4.83
2 Breogan	5.96
3 Melilla	6.38
4 Valladolid	6.92
5 Penas	6.96
6 Mallorca Palma	7.00
7 Leyma	7.04
8 Ourense	7.33
9 Maristas	7.46
10 Caceres	7.58
11 Lleida	7.91
12 Gipuzkoa	7.96
13 Oviedo Baloncesto	8.00
14 Marin	8.33
15 Alicante	8.38
16 Castello	9.42
17 Real Canoe	9.67
18 Almansa	9.78
AVERAGE	7.61

Opp Uncontested FG

1 Mallorca Palma	4.3 – 12.8	33.6%
2 Caceres	3.3 – 9.8	33.7%
3 Gipuzkoa	3.6 – 10.4	34.6%
4 Penas	4.4 – 12.3	35.8%
5 Alicante	5.8 – 16.2	35.8%
6 Ourense	4.4 – 12.2	36.1%
7 Granada	4.9 – 13.5	36.3%
8 Oviedo Baloncesto	4.3 – 11.7	36.8%
9 Leyma	5.3 – 14.2	37.3%
10 Almansa	5.5 – 14.7	37.4%
11 Lleida	5.0 – 13.2	37.9%
12 Marin	4.9 – 12.9	38.0%
13 Maristas	4.9 – 12.9	38.0%
14 Valladolid	3.8 – 9.8	38.8%
15 Castello	5.8 – 14.7	39.5%
16 Melilla	6.1 – 15.2	40.1%
17 Real Canoe	5.0 – 12.3	40.7%
18 Breogan	4.8 – 11.0	43.6%
AVERAGE	4.8 – 12.8	37.5%

Opp Contested FG

1 Melilla	18.0 – 46.5	38.7%
2 Gipuzkoa	20.2 – 51.2	39.5%
3 Alicante	19.3 – 48.7	39.6%
4 Mallorca Palma	19.3 – 48.4	39.9%
5 Breogan	19.0 – 47.2	40.3%
6 Leyma	19.9 – 48.6	40.9%
7 Granada	18.0 – 43.3	41.6%
8 Valladolid	20.9 – 50.0	41.8%
9 Oviedo Baloncesto	22.1 – 52.7	41.9%
10 Ourense	21.5 – 50.4	42.7%
11 Caceres	22.4 – 51.6	43.4%
12 Real Canoe	21.8 – 49.3	44.2%
13 Lleida	22.1 – 50.0	44.2%
14 Almansa	22.4 – 50.3	44.5%
15 Castello	22.5 – 50.3	44.7%
16 Penas	22.3 – 49.9	44.7%
17 Marin	21.3 – 47.7	44.7%
18 Maristas	22.3 – 49.1	45.4%
AVERAGE	20.8 – 49.1	42.4%



Rebounds

1	Melilla	36.79	55.2%
2	Mallorca Palma	35.25	52.6%
3	Maristas	32.92	52.1%
4	Granada	33.71	51.8%
5	Breogan	33.54	51.5%
6	Valladolid	35.79	51.4%
7	Leyma	35.62	51.1%
8	Caceres	33.58	51.0%
9	Alicante	34.17	49.8%
10	Penas	33.71	49.6%
11	Lleida	33.43	49.3%
12	Ourense	30.83	49.0%
13	Almansa	34.91	48.7%
14	Gipuzkoa	33.12	48.7%
15	Castello	32.96	48.3%
16	Marin	33.42	47.6%
17	Real Canoe	31.88	46.3%
18	Oviedo Baloncesto	31.86	46.0%
AVERAGE		33.75	49.9%



Offensive rebounds

1	Melilla	11.25	34.3%
2	Maristas	9.54	31.4%
3	Granada	10.50	31.3%
4	Almansa	11.74	31.3%
5	Valladolid	11.38	31.1%
6	Breogan	9.96	31.0%
7	Caceres	10.00	30.0%
8	Mallorca Palma	9.67	29.7%
9	Alicante	9.38	29.5%
10	Leyma	10.21	29.5%
11	Real Canoe	9.96	28.0%
12	Lleida	9.35	27.3%
13	Gipuzkoa	8.96	27.3%
14	Marin	10.08	27.0%
15	Castello	8.83	25.8%
16	Ourense	7.58	25.6%
17	Penas	8.67	25.5%
18	Oviedo Baloncesto	6.82	20.1%
AVERAGE		9.66	28.7%



Defensive rebounds

1	Melilla	25.54	75.4%
2	Mallorca Palma	25.58	74.4%
3	Valladolid	24.42	74.2%
4	Granada	23.21	73.7%
5	Penas	25.04	73.7%
6	Caceres	23.58	72.4%
7	Leyma	25.42	72.4%
8	Breogan	23.58	72.0%
9	Lleida	24.09	71.9%
10	Maristas	23.38	71.6%
11	Marin	23.33	71.0%
12	Oviedo Baloncesto	25.05	70.9%
13	Castello	24.12	70.7%
14	Ourense	23.25	70.4%
15	Gipuzkoa	24.17	68.8%
16	Almansa	23.17	67.8%
17	Alicante	24.79	67.6%
18	Real Canoe	21.92	66.0%
AVERAGE		24.0	71.4%



Turnovers

1	Mallorca Palma	13.88
2	Lleida	13.83
3	Ourense	13.58
4	Melilla	13.54
5	Oviedo Baloncesto	13.36
6	Alicante	13.29
7	Caceres	13.12
8	Marin	13.00
9	Penas	13.00
10	Leyma	12.92
11	Castello	12.79
12	Almansa	12.17
13	Breogan	12.08
14	Gipuzkoa	11.58
15	Real Canoe	11.38
16	Granada	11.17
17	Maristas	10.96
18	Valladolid	10.58
AVERAGE		12.57



Steals

1	Gipuzkoa	8.04
2	Alicante	7.83
3	Breogan	7.38
4	Almansa	7.30
5	Valladolid	7.25
6	Castello	7.21
7	Real Canoe	7.00
8	Leyma	7.00
9	Melilla	7.00
10	Caceres	6.58
11	Granada	6.54
12	Mallorca Palma	6.42
13	Marin	6.25
14	Penas	6.17
15	Lleida	5.65
16	Oviedo Baloncesto	5.23
17	Maristas	5.21
18	Ourense	5.04
AVERAGE		6.62



Fouls

On shots			
1	Breogan	22.58	5.7
2	Granada	21.62	5.9
3	Mallorca Palma	21.17	5.8
4	Melilla	20.96	6.6
5	Marin	20.83	6.9
6	Oviedo Baloncesto	20.73	5.8
7	Alicante	20.50	6.9
8	Leyma	20.46	7.3
9	Valladolid	20.38	7.9
10	Real Canoe	20.17	7.0
11	Almansa	19.74	8.5
12	Castello	19.58	7.2
13	Penas	19.12	5.7
14	Caceres	18.96	7.3
15	Lleida	18.74	5.8
16	Gipuzkoa	18.67	6.5
17	Maristas	18.17	6.5
18	Ourense	17.75	4.6
AVERAGE		20.01	6.5



Good fouls

1	Maristas	9.33	51.1%
2	Valladolid	10.29	50.5%
3	Lleida	9.17	49.2%
4	Real Canoe	9.62	47.5%
5	Alicante	9.50	46.3%
6	Almansa	9.09	46.2%
7	Gipuzkoa	8.46	45.5%
8	Leyma	8.00	44.9%
9	Castello	8.75	44.9%
10	Penas	8.54	44.5%
11	Leyma	9.08	44.4%
12	Oviedo Baloncesto	9.14	44.0%
13	Marin	9.00	43.3%
14	Caceres	8.17	43.2%
15	Granada	9.33	43.1%
16	Mallorca Palma	8.75	41.5%
17	Breogan	9.12	40.3%
18	Melilla	8.33	39.5%
AVERAGE		8.98	45.0%



Bad fouls

1	Melilla	12.33	58.6%
2	Mallorca Palma	11.92	56.1%
3	Breogan	12.62	55.8%
4	Caceres	10.33	54.2%
5	Oviedo Baloncesto	11.18	54.1%
6	Penas	10.33	53.9%
7	Marin	11.17	53.8%
8	Leyma	11.00	53.7%
9	Ourense	9.50	53.4%
10	Castello	10.38	53.1%
11	Gipuzkoa	9.79	52.4%
12	Alicante	10.58	51.7%
13	Granada	11.08	51.4%
14	Almansa	10.04	50.8%
15	Real Canoe	10.08	50.0%
16	Lleida	9.26	49.7%
17	Valladolid	9.58	47.1%
18	Maristas	8.17	45.1%
AVERAGE		10.52	52.5%



Technical fouls

1	Maristas	0.33
2	Penas	0.27
3	Castello	0.22
4	Leyma	0.20
5	Lleida	0.17
6	Breogan	0.17
7	Melilla	0.15
8	Granada	0.14
9	Caceres	0.13
10	Real Canoe	0.12
11	Alicante	0.12
12	Valladolid	0.10
13	Oviedo Baloncesto	0.10
14	Mallorca Palma	0.06
15	Gipuzkoa	0.06
16	Ourense	0.05
17	Almansa	0.04
18	Marin	-
AVERAGE		0.14



Blockshots

1	Alicante	4.50
2	Leyma	3.50
3	Castello	3.33
4	Melilla	3.33
5	Mallorca Palma	3.17
6	Lleida	3.13
7	Real Canoe	3.04
8	Gipuzkoa	3.00
9	Marin	2.62
10	Breogan	2.62
11	Oviedo Baloncesto	2.36
12	Valladolid	2.21
13	Maristas	2.17
14	Penas	2.04
15	Granada	1.92
16	Ourense	1.62
17	Caceres	1.38
18	Almansa	1.26
AVERAGE		2.62

Pick`n`rolls Handler

				Share
1	Alicante	4.5-11.1	41%	17%
2	Mallorca Palma	4.0-10.1	40%	17%
3	Castello	4.3-10.1	43%	17%
4	Granada	3.5-9.8	36%	16%
5	Melilla	4.1-11.5	36%	16%
6	Marin	3.3-9.6	34%	15%
7	Leyma	3.6-10.1	36%	15%
8	Penas	3.5-7.9	44%	15%
9	Maristas	3.7-8.4	44%	14%
10	Real Canoe	3.5-10.3	34%	14%
11	Gipuzkoa	3.6-8.1	44%	14%
12	Lleida	3.3-10.1	33%	14%
13	Oviedo Baloncesto	3.0-8.2	37%	14%
14	Caceres	3.3-11.0	30%	14%
15	Breogan	3.5-8.1	43%	13%
16	Valladolid	3.1-7.4	42%	13%
17	Almansa	3.0-9.5	32%	12%
18	Ourense	2.9-8.0	36%	12%
AVERAGE		3.5-9.4	37%	14%

Pick`n`rolls Roller

				Share
1	Gipuzkoa	2.2-3.1	71%	9%
2	Ourense	1.9-3.0	63%	8%
3	Alicante	1.8-2.5	72%	7%
4	Granada	1.5-2.9	52%	7%
5	Lleida	1.7-2.7	63%	7%
6	Mallorca Palma	1.6-2.5	64%	7%
7	Castello	1.8-3.0	60%	7%
8	Maristas	1.5-2.2	68%	6%
9	Melilla	1.6-2.7	59%	6%
10	Marin	1.3-1.9	68%	6%
11	Leyma	1.4-2.8	50%	6%
12	Breogan	1.7-2.7	63%	6%
13	Oviedo Baloncesto	1.3-2.4	54%	6%
14	Caceres	1.5-2.5	60%	6%
15	Real Canoe	1.4-2.2	64%	6%
16	Oviedo Baloncesto	1.2-2.2	55%	5%
17	Almansa	1.3-2.3	57%	5%
18	Valladolid	0.5-0.9	56%	2%
AVERAGE		1.5-2.5	60%	6%

Catch and shoots

				Share
1	Maristas	6.3-16.5	38%	24%
2	Real Canoe	5.7-16.4	35%	23%
3	Ourense	5.5-14.8	37%	23%
4	Lleida	5.1-14.2	36%	22%
5	Mallorca Palma	5.3-15.1	35%	22%
6	Oviedo Baloncesto	4.7-14.4	33%	21%
7	Penas	5.0-14.5	34%	21%
8	Caceres	4.8-13.3	36%	21%
9	Valladolid	5.0-14.6	34%	21%
10	Castello	5.1-14.5	35%	20%
11	Granada	4.3-12.6	34%	20%
12	Breogan	5.2-14.4	36%	19%
13	Gipuzkoa	4.8-15.6	31%	19%
14	Melilla	4.8-12.8	38%	19%
15	Marin	3.6-12.1	30%	17%
16	Leyma	3.6-11.3	32%	15%
17	Alicante	3.9-12.5	31%	15%
18	Almansa	3.7-12.7	29%	15%
AVERAGE		4.8-14.0	34%	20%

Catch and drives

				Share
1	Almansa	2.9-7.0	41%	12%
2	Gipuzkoa	2.5-5.7	44%	10%
3	Mallorca Palma	2.2-4.4	50%	9%
4	Marin	1.8-5.2	35%	8%
5	Real Canoe	2.0-4.5	44%	8%
6	Caceres	1.8-4.9	37%	8%
7	Penas	1.7-4.5	38%	7%
8	Leyma	1.7-3.8	45%	7%
9	Maristas	1.9-4.3	44%	7%
10	Granada	1.5-4.6	33%	7%
11	Lleida	1.5-3.7	41%	6%
12	Breogan	1.8-4.1	44%	6%
13	Oviedo Baloncesto	1.3-4.0	33%	6%
14	Valladolid	1.5-4.5	33%	6%
15	Castello	1.3-3.5	37%	5%
16	Melilla	1.4-3.9	36%	5%
17	Alicante	1.3-3.0	43%	5%
18	Ourense	1.0-2.3	43%	4%
AVERAGE		1.7-4.3	40%	7%

Screen offs

				Share
1	Breogan	3.8-8.2	46%	14%
2	Melilla	3.3-7.6	43%	13%
3	Oviedo Baloncesto	2.8-7.2	39%	13%
4	Valladolid	3.1-8.3	37%	13%
5	Ourense	2.8-7.0	40%	12%
6	Granada	2.7-6.6	41%	12%
7	Mallorca Palma	2.5-7.0	36%	10%
8	Maristas	2.6-5.6	46%	10%
9	Almansa	2.1-5.4	39%	9%
10	Marin	2.0-5.0	40%	9%
11	Leyma	2.0-6.1	33%	9%
12	Penas	2.0-6.0	33%	9%
13	Gipuzkoa	2.0-4.2	48%	8%
14	Caceres	1.9-4.3	44%	8%
15	Castello	1.7-4.3	40%	7%
16	Lleida	1.4-3.7	38%	6%
17	Real Canoe	1.1-2.7	41%	5%
18	Alicante	1.0-3.2	31%	4%
AVERAGE		2.3-5.7	40%	10%

Post ups

				Share
1	Lleida	3.5-8.5	41%	15%
2	Ourense	3.3-6.7	49%	14%
3	Caceres	2.7-6.0	45%	12%
4	Oviedo Baloncesto	2.7-6.2	44%	12%
5	Leyma	2.5-5.9	42%	11%
6	Alicante	3.0-6.1	49%	11%
7	Marin	2.4-6.1	39%	11%
8	Granada	2.1-6.1	34%	10%
9	Maristas	2.7-5.9	46%	10%
10	Almansa	2.5-6.5	38%	10%
11	Valladolid	2.1-4.7	45%	9%
12	Breogan	2.3-5.1	45%	8%
13	Castello	2.0-5.6	36%	8%
14	Real Canoe	1.7-4.3	40%	7%
15	Penas	1.5-4.5	33%	6%
16	Melilla	1.5-3.8	39%	6%
17	Mallorca Palma	1.4-3.5	40%	6%
18	Gipuzkoa	1.3-4.0	33%	5%
AVERAGE		2.3-5.5	42%	10%

Transitions

				Share
1	Melilla	4.6-7.8	59%	18%
2	Leyma	4.1-7.1	58%	18%
3	Penas	4.0-6.4	63%	17%
4	Marin	3.5-7.2	49%	16%
5	Alicante	4.3-7.8	55%	16%
6	Mallorca Palma	3.5-6.0	58%	15%
7	Breogan	4.3-7.0	61%	15%
8	Almansa	3.4-5.8	59%	14%
9	Valladolid	3.2-5.4	59%	14%
10	Real Canoe	3.3-7.2	46%	14%
11	Gipuzkoa	3.3-6.0	55%	13%
12	Castello	3.3-6.2	53%	13%
13	Maristas	3.3-5.7	58%	12%
14	Lleida	2.7-5.5	49%	11%
15	Granada	2.2-4.0	55%	10%
16	Oviedo Baloncesto	2.2-4.6	48%	10%
17	Caceres	2.4-4.5	53%	10%
18	Ourense	2.3-4.3	53%	10%
AVERAGE		3.3-6.0	55%	14%

Isolations

				Share
1	Real Canoe	2.2-5.2	42%	9%
2	Valladolid	2.0-5.8	34%	9%
3	Marin	1.6-4.7	34%	7%
4	Gipuzkoa	1.6-4.2	38%	6%
5	Penas	1.4-3.7	38%	6%
6	Leyma	1.4-3.6	39%	6%
7	Alicante	1.5-3.7	41%	6%
8	Almansa	1.4-3.8	37%	6%
9	Castello	1.3-3.2	41%	5%
10	Almansa	1.1-3.5	31%	5%
11	Oviedo Baloncesto	0.9-2.6	35%	4%
12	Lleida	1.0-2.8	36%	4%
13	Mallorca Palma	0.9-2.4	38%	4%
14	Breogan	1.2-2.4	50%	4%
15	Granada	1.1-2.3	48%	4%
16	Maristas	1.0-2.0	50%	4%
17	Granada	0.8-2.5	32%	4%
18	Ourense	0.8-2.0	40%	3%
AVERAGE		1.3-3.3	39%	5%

Hand offs

				Share
1	Caceres	1.3-3.1	42%	6%
2	Oviedo Baloncesto	1.0-3.0	33%	5%
3	Castello	1.3-3.2	41%	5%
4	Valladolid	1.0-2.8	36%	4%
5	Breogan	1.2-2.8	43%	4%
6	Gipuzkoa	0.9-2.4	38%	4%
7	Alicante	1.0-2.1	48%	4%
8	Real Canoe	0.8-2.0	40%	3%
9	Lleida	0.6-1.3	46%	3%
10	Mallorca Palma	0.8-2.2	36%	3%
11	Penas	0.8-2.5	32%	3%
12	Leyma	0.7-1.8	39%	3%
13	Melilla	0.8-1.3	62%	3%
14	Maristas	0.9-2.0	45%	3%
15	Granada	0.7-2.3	30%	3%
16	Marin	0.5-1.8	28%	2%
17	Almansa	0.5-1.7	29%	2%
18	Ourense	0.2-0.8	25%	1%
AVERAGE		0.8-2.2	36%	3%

Cuts

				Share
1	Almansa	3.6-5.5	65%	15%
2	Alicante	3.8-5.6	68%	15%
3	Ourense	3.3-5.0	66%	14%
4	Castello	3.3-4.0	83%	13%
5	Gipuzkoa	3.3-5.0	66%	13%
6	Lleida	2.8-4.0	70%	12%
7	Granada	2.7-4.4	61%	12%
8	Real Canoe	2.6-4.5	58%	11%
9	Breogan	2.8-4.2	67%	10%
10	Penas	2.3-4.5	51%	10%
11	Leyma	2.4-4.3	56%	10%
12	Melilla	2.7-4.7	57%	10%
13	Maristas	2.8-4.0	70%	10%
14	Oviedo Baloncesto	2.1-3.5	60%	10%
15	Caceres	2.1-3.4	62%	9%
16	Mallorca Palma	1.9-3.6	53%	8%
17	Valladolid	1.8-3.5	51%	8%
18	Marin	1.7-3.2	53%	8%
AVERAGE		2.7-4.3	63%	11%

Pick'n`rolls Handler

				Share
1	Alicante	4.7-11.6	41%	20%
2	Caceres	4.0-9.7	41%	16%
3	Lleida	4.2-10.8	39%	16%
4	Gipuzkoa	3.6-10.5	34%	16%
5	Melilla	3.6-8.5	42%	16%
6	Maristas	4.0-11.0	36%	16%
7	Ourense	3.8-9.2	41%	15%
8	Oviedo Baloncesto	3.9-9.6	41%	15%
9	Breogan	3.3-9.0	37%	15%
10	Castello	3.8-10.0	38%	15%
11	Leyma	3.7-10.0	37%	15%
12	Almansa	3.4-9.5	36%	13%
13	Valladolid	3.1-9.4	33%	13%
14	Marin	3.3-8.8	38%	13%
15	Real Canoe	3.2-7.3	44%	13%
16	Penas	3.0-8.6	35%	12%
17	Granada	2.5-7.9	32%	11%
18	Mallorca Palma	2.5-8.3	30%	11%
AVERAGE		3.5-9.4	37%	14%

Pick'n`rolls Roller

				Share
1	Granada	2.0-2.8	71%	9%
2	Gipuzkoa	2.0-3.3	61%	9%
3	Caceres	1.9-2.6	73%	8%
4	Almansa	1.7-2.2	77%	7%
5	Leyma	1.8-3.1	58%	7%
6	Melilla	1.5-2.7	56%	7%
7	Oviedo Baloncesto	1.6-3.0	53%	6%
8	Lleida	1.7-2.6	65%	6%
9	Mallorca Palma	1.3-2.8	46%	6%
10	Penas	1.4-2.7	52%	6%
11	Maristas	1.6-2.3	70%	6%
12	Marin	1.2-2.2	55%	5%
13	Valladolid	1.3-2.0	65%	5%
14	Ourense	1.2-1.9	63%	5%
15	Breogan	1.1-2.2	50%	5%
16	Castello	1.4-2.3	61%	5%
17	Real Canoe	1.3-2.5	52%	5%
18	Alicante	0.8-1.7	47%	3%
AVERAGE		1.5-2.5	60%	6%

Catch and shoots

				Share
1	Breogan	5.4-13.5	40%	25%
2	Castello	6.0-16.3	37%	23%
3	Ourense	5.5-17.1	32%	22%
4	Valladolid	5.3-14.3	37%	22%
5	Lleida	5.7-14.7	39%	22%
6	Almansa	5.5-15.2	36%	21%
7	Granada	4.7-13.7	34%	20%
8	Real Canoe	4.8-13.9	35%	20%
9	Penas	5.0-14.5	34%	20%
10	Mallorca Palma	4.3-13.5	32%	20%
11	Gipuzkoa	4.1-13.4	31%	19%
12	Melilla	4.3-14.8	29%	19%
13	Alicante	4.5-13.7	33%	19%
14	Caceres	4.8-13.8	35%	19%
15	Maristas	4.5-13.0	35%	18%
16	Marin	4.3-12.1	36%	17%
17	Leyma	3.9-12.0	33%	16%
18	Oviedo Baloncesto	3.6-12.8	28%	14%
AVERAGE		4.8-14.0	34%	20%

Catch and drives

				Share
1	Granada	2.3-4.8	48%	10%
2	Melilla	2.3-5.9	39%	10%
3	Penas	1.9-3.8	50%	8%
4	Maristas	2.0-4.7	43%	8%
5	Alicante	1.9-4.0	48%	8%
6	Marin	1.8-3.8	47%	7%
7	Caceres	1.8-4.2	43%	7%
8	Almansa	1.8-3.9	46%	7%
9	Lleida	1.9-4.6	41%	7%
10	Valladolid	1.7-3.9	44%	7%
11	Breogan	1.5-4.2	36%	7%
12	Gipuzkoa	1.6-4.1	39%	7%
13	Ourense	1.5-4.7	32%	6%
14	Leyma	1.4-4.2	33%	6%
15	Mallorca Palma	1.4-4.6	30%	6%
16	Oviedo Baloncesto	1.5-4.4	34%	6%
17	Real Canoe	1.5-4.0	38%	6%
18	Castello	1.3-4.0	33%	5%
AVERAGE		1.7-4.3	40%	7%

Screen offs

				Share
1	Real Canoe	2.9-6.3	46%	12%
2	Gipuzkoa	2.3-6.5	35%	11%
3	Mallorca Palma	2.5-6.1	41%	11%
4	Penas	2.8-6.0	47%	11%
5	Granada	2.3-4.9	47%	10%
6	Melilla	2.3-5.8	40%	10%
7	Leyma	2.5-6.1	41%	10%
8	Marin	2.5-5.9	42%	10%
9	Oviedo Baloncesto	2.6-6.3	41%	10%
10	Caceres	2.4-5.8	41%	10%
11	Breogan	2.0-5.2	38%	9%
12	Alicante	2.1-5.8	36%	9%
13	Ourense	2.3-5.4	43%	9%
14	Castello	2.0-5.5	36%	8%
15	Lleida	2.1-5.6	38%	8%
16	Maristas	1.8-5.4	33%	7%
17	Valladolid	1.8-4.9	37%	7%
18	Almansa	1.7-5.1	33%	7%
AVERAGE		2.3-5.7	40%	10%

Post ups

				Share
1	Oviedo Baloncesto	3.3-7.6	43%	13%
2	Almansa	3.1-7.0	44%	12%
3	Real Canoe	2.6-5.7	46%	11%
4	Leyma	2.3-6.4	36%	10%
5	Valladolid	2.3-6.0	38%	10%
6	Mallorca Palma	2.2-5.2	42%	10%
7	Penas	2.6-5.9	44%	10%
8	Granada	2.3-5.2	44%	10%
9	Castello	2.6-5.9	44%	10%
10	Maristas	2.5-5.3	47%	10%
11	Marin	2.3-5.3	43%	9%
12	Gipuzkoa	2.0-5.2	38%	9%
13	Breogan	2.0-5.0	40%	9%
14	Caceres	2.3-5.0	46%	9%
15	Ourense	2.1-4.8	44%	9%
16	Melilla	1.8-5.0	36%	8%
17	Alicante	1.7-4.5	38%	7%
18	Lleida	1.7-4.6	37%	6%
AVERAGE		2.3-5.5	42%	10%

Transitions

				Share
1	Real Canoe	4.2-7.8	54%	17%
2	Lleida	4.4-6.9	64%	17%
3	Mallorca Palma	3.6-6.2	58%	17%
4	Penas	3.9-6.8	57%	15%
5	Leyma	3.3-5.9	56%	14%
6	Almansa	3.7-7.2	51%	14%
7	Alicante	3.4-7.0	49%	14%
8	Granada	3.2-5.5	58%	14%
9	Marin	3.4-5.7	60%	14%
10	Oviedo Baloncesto	3.5-5.7	61%	14%
11	Castello	3.3-5.7	58%	13%
12	Maristas	3.3-5.8	57%	13%
13	Valladolid	3.1-5.8	53%	13%
14	Caceres	3.2-6.5	49%	13%
15	Ourense	3.2-5.7	56%	13%
16	Melilla	2.7-5.1	53%	12%
17	Gipuzkoa	2.4-4.7	51%	11%
18	Breogan	2.2-5.0	44%	10%
AVERAGE		3.3-6.1	54%	14%

Isolations

				Share
1	Maristas	2.3-4.4	52%	9%
2	Penas	1.9-4.3	44%	8%
3	Marin	1.7-4.3	40%	7%
4	Melilla	1.3-3.3	39%	6%
5	Caceres	1.4-3.7	38%	6%
6	Oviedo Baloncesto	1.6-4.4	36%	6%
7	Valladolid	1.4-3.9	36%	6%
8	Breogan	1.4-3.2	44%	6%
9	Almansa	1.3-2.9	45%	5%
10	Ourense	1.3-2.7	48%	5%
11	Leyma	1.2-2.9	41%	5%
12	Gipuzkoa	1.0-2.9	34%	5%
13	Castello	1.3-2.9	45%	5%
14	Mallorca Palma	1.0-2.8	36%	5%
15	Granada	1.0-3.5	29%	4%
16	Alicante	0.9-3.3	27%	4%
17	Real Canoe	0.9-2.7	33%	4%
18	Lleida	0.8-2.6	31%	3%
AVERAGE		1.3-3.4	38%	5%

Hand offs

				Share
1	Mallorca Palma	1.0-2.2	45%	5%
2	Breogan	1.0-2.3	43%	5%
3	Castello	1.2-2.4	50%	5%
4	Marin	1.0-2.7	37%	4%
5	Melilla	1.0-2.8	36%	4%
6	Oviedo Baloncesto	0.9-2.4	38%	4%
7	Alicante	1.0-3.2	31%	4%
8	Leyma	1.0-2.6	38%	4%
9	Valladolid	0.8-1.8	44%	3%
10	Granada	0.6-2.0	30%	3%
11	Maristas	0.7-1.7	41%	3%
12	Ourense	0.8-2.1	38%	3%
13	Penas	0.8-2.3	35%	3%
14	Lleida	0.8-2.1	38%	3%
15	Real Canoe	0.8-1.7	47%	3%
16	Gipuzkoa	0.5-1.3	38%	2%
17	Caceres	0.5-1.7	29%	2%
18	Almansa	0.6-1.8	33%	2%
AVERAGE		0.8-2.2	36%	3%

Cuts

				Share
1	Marin	3.5-5.4	65%	14%
2	Valladolid	3.3-5.1	65%	14%
3	Leyma	3.1-5.0	62%	13%
4	Castello	3.0-4.7	64%	12%
5	Almansa	3.0-4.3	70%	12%
6	Ourense	3.0-4.6	65%	12%
7	Gipuzkoa	2.4-4.3	56%	11%
8	Lleida	2.9-4.5	64%	11%
9	Maristas	2.8-4.2	67%	11%
10	Alicante	2.7-4.3	63%	11%
11	Oviedo Baloncesto	2.7-4.0	68%	11%
12	Caceres	2.7-4.7	57%	11%
13	Melilla	2.2-3.9	56%	10%
14	Granada	2.2-3.5	63%	10%
15	Breogan	2.0-3.2	63%	9%
16	Mallorca Palma	2.0-3.9	51%	9%
17	Real Canoe	2.2-4.0	55%	9%
18	Penas	2.0-3.4	59%	8%
AVERAGE		2.7-4.3	63%	11%

InStat Index

		InStat Index	Matches played	
1	De La Fuente	VAL	245	23
2	Powell	BRE	244	12
3	Agada	MEL	244	23
4	Larsen	MAR	244	24
5	Dee	GIP	243	24
6	Rozitis	GIP	241	23
7	Diaz	BRE	241	24
8	Hartwich	MEL	241	24
9	Sollazzo	GIP	241	24
10	Pena	BRE	240	20

Points

			Points	/100 poss
1	Bartley IV	VAL	16.42	26.20
2	Dee	GIP	15.25	26.93
3	Balaban	OUR	15.25	27.44
4	Pitts	ALI	15.17	28.20
5	Cvetinovic	ALM	15.17	24.01
6	Agada	MEL	14.57	26.90
7	Larsen	MAR	14.29	28.87
8	Fall	ALI	13.92	22.79
9	De La Fuente	VAL	13.26	24.11
10	Stutz	LLE	13.22	22.61

Field goals

1	Balaban	OUR	6.5-10.9	60%
2	Alonso	OB	6.3-15.3	41%
3	Cvetinovic	ALM	5.9-12.2	48%
4	Agada	MEL	5.7-13.0	44%
5	Pitts	ALI	5.6-11.4	49%
6	Bartley IV	VAL	5.5-13.6	40%
7	Urtasun Uriz	OUR	5.5-12.5	44%
8	Fall	ALI	5.4-9.1	59%
9	Timmer	GIP	5.4-10.8	50%
10	Dee	GIP	5.4-12.6	43%

2-pt field goals

1	Balaban	OUR	6.5-10.8	60%
2	Fall	ALI	5.4-9.1	59%
3	Agada	MEL	5.0-10.7	47%
4	Cleare	LLE	5.0-9.4	53%
5	Cvetinovic	ALM	4.7-9.1	52%
6	Urtasun Uriz	OUR	4.5-9.0	50%
7	Larsen	MAR	4.4-8.7	51%
8	Blackwell	LEY	4.4-8.0	55%
9	Skara	PEN	4.3-8.1	53%
10	Zegeren	CAS	4.1-7.3	56%

3-pt field goals

1	Alonso	OB	3.7-9.7	38%
2	Dee	GIP	2.9-7.1	41%
3	Geks	OB	2.6-6.4	41%
4	Matulionis	MEL	2.5-6.1	41%
5	Wood	OUR	2.5-5.5	45%
6	Xavier	LEY	2.3-7.5	31%
7	Ahonen	BRE	2.3-4.9	47%
8	Timmer	GIP	2.3-4.4	52%
9	Uriz	CAC	2.3-5.9	39%
10	Kapelan	GRA	2.1-6.1	34%

Free throws

1	Urtasun Uriz	OUR	5.0-5.0	100%
2	Hernandez	MP	3.0-3.4	88.2%
3	Alonso	OB	5.0-5.7	87.7%
4	Rubio	GRA	3.8-4.4	86.4%
5	Djukanovic	CAS	3.6-4.3	83.7%
6	Holmes	RC	3.0-3.6	83.3%
7	Larsen	MAR	4.3-5.2	82.7%
8	Reyes-Abad	OB	2.7-3.3	81.8%
9	Hamilton	LEY	3.4-4.2	81.0%
10	Timmer	GIP	2.9-3.6	80.6%

Assists

1	Llompарт Uson	ALI	6.5
2	García	PEN	6.4
3	Alvarado	OUR	5.9
4	Rodriguez	MAR	5.2
5	Llorente Paz	OB	4.9
6	Ancizu	GIP	4.8
7	Wintering	PEN	4.6
8	Fahner Catala	CAS	4.5
9	Peciukevicius	LEY	4.4
10	Uriz	CAC	4.3

Uncontested FG

1	Matulionis	MEL	1.8-3.8	47.4%
2	Alonso	OB	1.7-3.7	45.9%
3	Geks	OB	1.4-3.5	40.0%
4	Jasaitis	MAR	1.4-2.7	51.9%
5	Bas Mari	CAS	1.4-2.3	60.9%
6	Bader	MAR	1.3-2.4	54.2%
7	Misters	MEL	1.2-3.2	37.5%
8	Rodriguez	GRA	1.2-2.8	42.9%
9	Vucetic	PEN	1.2-2.5	48.0%
10	Timmer	GIP	1.1-1.6	68.8%

Contested FG

1	Balaban	OUR	6.3-10.5	60.0%
2	Urtasun Uriz	OUR	5.0-12.0	41.7%
3	Fall	ALI	4.9-8.6	57.0%
4	Cvetinovic	ALM	4.7-10.0	47.0%
5	Pitts	ALI	4.7-9.3	50.5%
6	Cleare	LLE	4.6-9.0	51.1%
7	Bartley IV	VAL	4.4-11.3	38.9%
8	Powell	BRE	4.3-8.7	49.4%
9	Dee	GIP	4.2-10.3	40.8%
10	Blackwell	LEY	4.1-7.4	55.4%

+/-

			Average per match	
1	Dee	GIP	143.0	6.0
2	Federico	VAL	141.0	6.1
3	De La Fuente	VAL	131.0	5.7
4	Bivia	MP	128.0	5.3
5	Busquets	ALI	128.0	8.0
6	Fall	ALI	125.0	5.2
7	Peciukevicius	LEY	123.0	6.5
8	Uriz	CAC	123.0	5.9
9	Rozitis	GIP	121.0	5.3
10	Aboubacar	VAL	115.0	4.8

Blockshots

1	Fall	ALI	2.12
2	Hartwich	MEL	1.75
3	Kabasele	RC	1.67
4	Stutz	LLE	1.35
5	Doorson	MAR	1.25
6	Olah	BRE	1.33
7	Gatell	CAS	1.31
8	Rozitis	GIP	1.17
9	Zegeren	CAS	1.09
10	Olumuyiwa	MP	0.96

Blockshots against

1	Carey	LLE	1.00
2	Gavrilovic	BRE	0.88
3	Larsen	MAR	0.79
4	Balaban	OUR	0.79
5	Toncinic	CAS	0.67
6	Arteaga	OB	0.65
7	Vucetic	PEN	0.71
8	Agada	MEL	0.70
9	Cvetinovic	ALM	0.74
10	Lundqvist	RC	0.61

Rating

			Net rating	Offensive rating	Defensive rating
1	Powell	BRE	19.3	107.2	87.8
2	Busquets	ALI	16.9	96.6	79.7
3	Dos Anjos	MAR	15.2	100.8	85.6
4	Peciukevicius	LEY	14.2	97.6	83.4
5	Luke	MEL	12.8	95.1	82.3
6	Federico	VAL	13.3	98.8	85.5
7	Olaizola	GIP	13.3	90.6	77.4
8	Berg Pedersen	CAC	11.7	93.5	81.8
9	Hartwich	MEL	11.2	91.5	80.3
10	Rozitis	GIP	11.0	94.4	83.4

Rebounds

1	Fall	ALI	8.46
2	Reyes	OB	8.00
3	Washburn	OB	8.00
4	Stutz	LLE	7.70
5	Blackwell	LEY	7.10
6	De La Fuente	VAL	7.09
7	Reyes-Abad	OB	7.00
8	Aboubacar	VAL	6.88
9	Joseph	CAC	6.77
10	Zegeren	CAS	6.77

Offensive rebounds

1	Watson	GRA	3.12
2	Washburn	OB	3.00
3	Graham	ALM	2.90
4	Powell	BRE	2.67
5	De La Fuente	VAL	2.61
6	Rowley	ALM	2.61
7	Hartwich	MEL	2.62
8	Blackwell	LEY	2.57
9	Joseph	CAC	2.50
10	Stutz	LLE	2.52

Defensive rebounds

1	Fall	ALI	6.50
2	Reyes	OB	6.38
3	Reyes-Abad	OB	5.57
4	Stutz	LLE	5.17
5	Washburn	OB	5.00
6	Garcia	CAS	5.00
7	Arteaga	OB	5.00
8	Olumuyiwa	MP	4.74
9	Kacinas	MAR	4.62
10	Blackwell	LEY	4.52

Turnovers

1	Llorente Paz	OB	2.82
2	Llompарт Uson	ALI	2.70
3	Agada	MEL	2.61
4	Coggins	OB	2.57
5	Wintering	PEN	2.55
6	Balaban	OUR	2.42
7	Noguerol Barrenechea	MAR	2.42
8	Fall	ALI	2.17
9	Xavier	LEY	2.21
10	Wade-Chatman	CAS	2.17

Steals

1	Agada	MEL	2.26
2	Bartley IV	VAL	1.79
3	Ancizu	GIP	1.81
4	Pitts	ALI	1.67
5	Noguerol Barrenechea	MAR	1.46
6	Graham	ALM	1.50
7	Washburn	OB	1.50
8	Oroz	GIP	1.38
9	Cvetinovic	ALM	1.39
10	Fahner Catala	CAS	1.42

Fouls

On shots				
1	Carroll	MAR	3.67	1.3
2	Washburn	OB	3.50	0.5
3	DiNunno	LEY	3.50	0.5
4	Nuutinen	OB	3.41	0.8
5	Alonso	OB	3.33	0.8
6	Blackwell	LEY	3.24	0.8
7	Hartwich	MEL	3.21	1.0
8	Olmos	GRA	3.24	0.8
9	Powell	BRE	3.08	1.0
10	Llorente Paz	OB	3.14	0.6

Good fouls

Share				
1	Carey	LLE	3.00	100%
2	Aboubacar	VAL	2.00	66%
3	Reyes-Abad	OB	1.86	72%
4	Alonso	OB	1.67	50%
5	Harris	ALM	1.57	55%
6	Cleare	LLE	1.61	56%
7	Wintering	PEN	1.55	53%
8	Galan Pozo	ALI	1.58	52%
9	Gatell	CAS	1.62	54%
10	Sidibe	MEL	1.48	49%

Bad fouls

Share				
1	DiNunno	LEY	2.50	71%
2	Carroll	MAR	2.00	54%
3	Washburn	OB	2.00	57%
4	Nuutinen	OB	1.94	57%
5	Zubizarreta	CAC	1.86	70%
6	Quinn	MAR	1.86	59%
7	Olmos	GRA	1.90	59%
8	Hartwich	MEL	1.92	60%
9	Gavrilovic	BRE	1.75	70%
10	Diaz	BRE	1.67	60%

Technical fouls

1	Holmes	RC	0.20
2	Thiam	LEY	0.05
3	Stutz	LLE	0.05
4	Garcia	CAS	0.11
5	Marin Ortega	MEL	0.08
6	Fall	ALI	0.08
7	Mariea Garcia	CAS	0.11
8	Cleare	LLE	0.05
9	Zubizarreta	CAC	0.05
10	Agada	MEL	0.05

Fouls suffered

Shooting share				
1	Wintering	PEN	6.55	22%
2	Jakstas	OB	4.91	24%
3	Balaban	OUR	4.83	18%
4	Larsen	MAR	4.83	33%
5	Agada	MEL	4.61	28%
6	Arteaga	OB	4.41	17%
7	Rubio	GRA	4.38	28%
8	Alonso	OB	4.33	39%
9	De La Fuente	VAL	4.09	28%
10	Bartley IV	VAL	4.08	42%

Opp Points

Points /100 poss				
1	Alonso	OB	16.0	29.6
2	Toncinic	CAS	13.4	28.2
3	Koyanouba	MEL	12.0	40.0
4	Jakstas	OB	11.9	21.7
5	Carroll	MAR	11.3	35.0
6	Vucetic	PEN	11.0	20.2
7	Gil	RC	10.7	21.3
8	Skara	PEN	10.7	19.6
9	Stutz	LLE	10.4	17.7
10	Badmus	MAR	10.4	16.3

Opponents field goals

1	Koyanouba	MEL	6.0-11.0	55%
2	Toncinic	CAS	5.9-10.7	55%
3	Alonso	OB	5.3-9.3	57%
4	Jakstas	OB	4.7-11.3	42%
5	Skara	PEN	4.3-10.1	43%
6	Vucetic	PEN	4.3-9.3	46%
7	Fall	ALI	4.2-11.5	37%
8	Stutz	LLE	4.1-9.0	46%
9	Doorson	MAR	4.0-9.1	44%
10	Gatell	CAS	3.9-9.2	42%

Opp 3-pt field goals

1	Koyanouba	MEL	6.0-9.0	67%
2	Toncinic	CAS	4.7-7.8	60%
3	Jakstas	OB	3.9-8.3	47%
4	Doorson	MAR	3.7-8.3	45%
5	Gatell	CAS	3.7-7.6	49%
6	Kabasele	RC	3.5-8.4	42%
7	Joseph	CAC	3.5-7.5	47%
8	Balaban	OUR	3.5-7.1	49%
9	Cleare	LLE	3.4-7.6	45%
10	Zegeren	CAS	3.4-7.6	45%

Opp 2-pt field goals

1	Alonso	OB	2.3-3.7	62%
2	Carey	LLE	2.0-4.0	50%
3	Rodriguez	MAR	1.8-4.3	42%
4	Federico	VAL	1.5-3.8	39%
5	Reyes	OB	1.5-4.5	33%
6	Timmer	GIP	1.5-3.5	43%
7	Polanco Tavarez	LLE	1.5-3.2	47%
8	Djukanovic	CAS	1.4-3.0	47%
9	Galan Pozo	ALI	1.4-3.7	38%
10	Alvarado	OUR	1.4-3.4	41%



Pick`n`rolls Handler

1	Alonso	OB	3.0-5.7	53%
2	Pitts	ALI	2.6-5.3	49%
3	Leimanis	VAL	1.7-3.8	45%
4	Wade-Chatman	CAS	1.7-4.0	43%
5	Niang	MAR	1.7-3.8	45%
6	Urtasun Uriz	OUR	1.5-5.5	27%
7	Rodriguez	MAR	1.5-3.4	44%
8	Hernandez	MP	1.5-3.6	42%
9	Hernandez	MP	1.4-3.4	41%
10	Agada	MEL	1.4-4.1	34%



Pick`n`rolls Roller

1	Koyanouba	MEL	2.0-2.0	100%
2	Balaban	OUR	1.3-1.9	68%
3	Fall	ALI	1.1-1.5	73%
4	Rozitis	GIP	1.1-1.6	69%
5	Zegeren	CAS	1.1-1.8	61%
6	Maxwell	ALM	1.0-1.5	67%
7	Cleare	LLE	1.0-1.8	56%
8	Quinn	MAR	0.9-1.3	69%
9	Blackwell	LEY	0.9-1.7	53%
10	Nurger	BRE	0.8-1.1	73%



Pick`n`pops

1	Washburn	OB	3.0-3.0	100%
2	Sidibe	MEL	1.0-1.8	56%
3	Carroll	MAR	0.7-1.3	54%
4	Aleksandar	CAS	0.5-0.5	100%
5	Vucetic	PEN	0.5-1.0	50%
6	Schaftenaar	RC	0.5-0.9	56%
7	Stutz	LLE	0.5-1.1	45%
8	De La Fuente	VAL	0.4-1.1	36%
9	Skara	PEN	0.4-0.8	50%
10	Jakstas	OB	0.4-0.5	80%



Post ups

1	Balaban	OUR	2.4-4.5	53%
2	Fall	ALI	2.2-4.1	54%
3	Aleksandar	CAS	2.0-2.5	80%
4	Cleare	LLE	1.9-4.6	41%
5	Joseph	CAC	1.6-3.7	43%
6	Arteaga	OB	1.5-3.4	44%
7	Larsen	MAR	1.3-3.0	43%
8	Garcia	CAS	1.1-2.3	48%
9	Rubio	GRA	1.0-2.5	40%
10	Hamilton	LEY	1.0-1.8	56%



Isolations

1	Pitts	ALI	1.0-1.9	53%
2	Agada	MEL	0.7-1.4	50%
3	Kullamae	RC	0.7-1.5	47%
4	Lundqvist	RC	0.6-1.2	50%
5	Rakocevic	CAC	0.6-1.2	50%
6	Wade-Chatman	CAS	0.6-1.3	46%
7	Hernandez	MAR	0.6-1.3	46%
8	Niang	MAR	0.6-1.6	38%
9	Wintering	PEN	0.6-2.2	27%
10	Bartley IV	VAL	0.5-1.5	33%



Catch and shoots

1	Jasaitis	MAR	1.5-3.1	48%
2	Seibring	RC	1.4-2.6	54%
3	Timmer	GIP	1.4-2.4	58%
4	Geks	OB	1.4-3.3	42%
5	Schaftenaar	RC	1.3-3.7	35%
6	Alonso	OB	1.3-3.7	35%
7	Mazaira	MAR	1.2-2.7	44%
8	Vucetic	PEN	1.2-3.0	40%
9	Feliu	LLE	1.2-3.2	38%
10	Powell	BRE	1.2-1.9	63%



Catch and drives

1	Urtasun Uriz	OUR	1.0-1.0	100%
2	Murphy	GIP	0.8-1.3	62%
3	Graham	ALM	0.7-1.2	58%
4	Cvetinovic	ALM	0.7-1.5	47%
5	Lundqvist	RC	0.6-1.1	55%
6	Rakocevic	CAC	0.6-1.1	55%
7	Arco	BRE	0.6-0.9	67%
8	Skara	PEN	0.5-1.2	42%
9	Brown	BRE	0.5-0.5	100%
10	Powell	BRE	0.5-1.3	38%



Screen offs

1	Urtasun Uriz	OUR	2.0-2.5	80%
2	Bartley IV	VAL	1.4-3.8	37%
3	Reyes	OB	1.2-3.2	38%
4	Matulionis	MEL	1.2-3.2	38%
5	Kapelan	GRA	1.1-2.8	39%
6	Reyes-Abad	OB	1.0-3.3	30%
7	Brown	BRE	1.0-2.0	50%
8	Wood	OUR	1.0-2.6	38%
9	Bas	CAS	1.0-1.0	100%
10	Misters	MEL	1.0-2.1	48%



Hand offs

1	Uriz	CAC	0.8-1.3	62%
2	Alonso	OB	0.7-1.0	70%
3	Djukanovic	CAS	0.6-1.4	43%
4	Geks	OB	0.5-1.0	50%
5	Dee	GIP	0.5-0.8	63%
6	Coggins	OB	0.4-1.3	31%
7	Llompert Uson	ALI	0.3-0.4	75%
8	Wintering	PEN	0.3-0.9	33%
9	Leimanis	VAL	0.3-0.7	43%
10	Schmidt	ALI	0.3-0.3	100%



Transitions

1	Agada	MEL	1.4-2.0	70%
2	Wintering	PEN	1.3-1.6	81%
3	Niang	MAR	1.1-1.7	65%
4	Schmidt	ALI	1.0-2.0	50%
5	Bartley IV	VAL	1.0-1.6	63%
6	Murphy	GIP	0.9-1.3	69%
7	Busquets	ALI	0.9-1.6	56%
8	Kamba	LEY	0.9-1.3	69%
9	Badmus	MAR	0.9-1.5	60%
10	Cvetinovic	ALM	0.9-1.3	69%



Cuts

1	Koyanouba	MEL	2.0-2.0	100%
2	De Thae	BRE	1.6-1.9	84%
3	Zegeren	CAS	1.4-1.5	93%
4	Balaban	OUR	1.3-2.0	65%
5	Stutz	LLE	1.2-1.5	80%
6	Cvetinovic	ALM	1.1-1.8	61%
7	Sima	OUR	1.1-1.6	69%
8	Fall	ALI	1.0-1.5	67%
9	Kabasele	RC	1.0-1.7	59%
10	Washburn	OB	1.0-1.5	67%



Putbacks

1	Brown	BRE	1.0-0.5	200%
2	De La Fuente	VAL	0.9-1.5	60%
3	Stutz	LLE	0.9-1.6	56%
4	Grabauskas	PEN	0.8-1.5	53%
5	Watson	GRA	0.8-1.3	62%
6	Aboubacar	VAL	0.8-1.3	62%
7	Bilbao	CAC	0.7-1.1	64%
8	Balaban	OUR	0.7-1.1	64%
9	Dos Anjos	MAR	0.7-1.1	64%
10	Zegeren	CAS	0.7-1.6	44%



Centers

		InStat Index	Matches	Minutes	Points	/100 poss	Assists	Field goals	3-pt field goals	Free throws	REBOUNDS			FOULS					BLK	BLK against	Opp Points	Opponents field goals	+/-	Net rating			
											Total	Offense	Defense	Turnov	Steals	Fouls	Reason	Unreason							Tech	Against	
1	Washburn	OB	241	2	28:39	11.0	19.1	3.0	5-10 50%	2.0-3.5 57%	-	8.0	3.0	5.0	1.5	1.5	3.5	1.5	2.0	-	1.0	0.5	0.5	8.0	3.0-7.5 40%	7.0	8.7
2	Rozitis	GIP	241	23	20:57	8.7	20.2	1.3	3-6 50%	-	1.7-2.4 71%	5.3	1.7	3.6	1.3	0.5	1.7	0.8	0.9	0.1	2.9	1.2	0.4	7.0	3.0-8.0 38%	121.0	11.0
3	Hartwich	MEL	241	24	18:12	6.2	16.5	0.5	2-4 50%	-	1.5-2.5 60%	6.5	2.6	3.9	1.8	0.3	3.2	1.2	1.9	-	2.3	1.8	0.2	6.1	1.9-7.8 24%	100.0	11.2
4	Nurger	BRE	240	24	19:35	7.2	17.7	0.8	3-6 50%	0-0.4 0%	1.4-1.9 74%	4.0	1.5	2.6	0.9	0.6	2.2	0.7	1.4	-	1.7	0.5	0.4	8.0	2.8-7.6 37%	103.0	10.4
5	Aboubacar	VAL	239	24	20:46	6.9	16.2	0.3	2-4 50%	-	2.2-3.5 63%	6.9	2.4	4.5	1.3	0.3	3.0	2.0	0.9	-	2.4	0.5	0.2	8.0	2.5-5.9 42%	115.0	9.7
6	Balaban	OUR	238	24	26:57	15.3	27.4	1.3	7-11 64%	0-0.1 0%	2.3-3.4 68%	6.3	1.8	4.5	2.4	0.2	2.7	1.1	1.6	-	4.8	0.5	0.8	9.6	3.8-8.1 47%	27.0	-3.5
7	Olah	BRE	238	24	20:28	7.1	16.9	0.8	3-6 50%	0-0.7 0%	0.8-1.7 47%	4.7	1.5	3.2	1.0	0.3	2.3	1.3	1.0	-	1.9	1.3	0.2	9.3	3.6-9.0 40%	39.0	3.1
8	Ucles	MEL	237	24	25:30	7.9	14.9	1.5	3-7 43%	0.6-1.8 33%	1.1-1.5 73%	5.5	1.8	3.7	1.3	0.8	2.0	0.8	1.2	-	1.5	0.4	0.3	6.8	2.5-7.1 35%	96.0	6.4
9	Gonzalez	MP	236	6	14:26	4.0	13.2	1.0	2-4 50%	-	0-0.3 0%	4.8	2.3	2.5	1.2	1.0	2.5	1.2	1.3	-	1.2	-	0.3	5.5	1.8-4.8 38%	31.0	21.9
10	Dos Anjos	MAR	236	23	16:42	6.2	18.4	0.4	3-4 75%	-	1.0-1.8 56%	5.7	2.3	3.4	0.7	0.2	2.0	1.3	0.7	-	2.2	0.9	0.2	7.9	3.1-7.0 44%	115.0	15.2
11	Olaizola	GIP	235	18	9:32	2.9	14.9	0.3	1-3 33%	0.2-0.4 50%	0.2-0.3 67%	2.1	1.1	1.0	0.7	0.1	2.4	1.2	1.3	-	0.7	0.2	0.2	4.0	1.1-2.4 46%	40.0	13.3
12	Fall	BRE	234	17	8:12	2.5	15.9	0.4	1-2 50%	-	0.4-0.7 57%	1.8	0.8	0.9	0.3	0.1	1.4	0.5	0.8	-	0.6	0.4	0.2	3.4	1.1-2.7 41%	-6.0	4.0
13	Kacinas	MAR	233	24	25:33	8.5	16.5	1.5	3-6 50%	1.0-2.6 38%	1.2-1.5 80%	6.0	1.3	4.6	1.0	0.4	2.0	1.0	1.0	-	1.8	0.5	0.3	9.7	3.7-8.4 44%	42.0	3.1
14	Vucetic	PEN	233	24	26:05	13.0	23.6	1.1	5-11 45%	1.1-3.2 34%	2.4-3.2 75%	5.6	1.8	3.8	1.3	0.4	2.4	1.1	1.3	-	3.3	0.3	0.7	11.0	4.3-9.3 46%	-68.0	-6.7
15	Rey	MP	233	9	11:21	5.2	21.5	0.4	2-3 67%	-	1.4-2.6 54%	3.1	0.4	2.7	1.0	0.7	1.2	0.3	0.7	-	3.2	0.7	0.2	4.4	1.8-4.4 41%	50.0	20.7
16	Pradilla	MAR	231	24	14:43	5.5	18.2	0.7	2-4 50%	0.5-1.0 50%	0.5-0.9 56%	3.0	1.2	1.8	0.5	0.4	1.9	0.9	1.0	-	1.5	0.1	0.4	6.2	2.2-5.1 43%	14.0	0.4
17	Stainbrook	MP	231	8	13:06	3.9	13.5	1.1	2-3 67%	-	0.6-1.3 46%	3.5	1.1	2.4	0.6	-	1.8	0.8	0.9	-	1.0	0.1	0.1	3.8	1.3-3.3 39%	-39.0	-22.5
18	Iriarte	GRA	231	21	12:30	4.6	17.8	0.7	2-4 50%	0.3-1.1 27%	0.7-1.0 70%	2.7	0.9	1.8	0.8	0.6	2.2	0.7	1.2	-	1.2	0.2	0.1	5.0	1.6-3.7 43%	10.0	0.8
19	Del Aguila	CAC	231	5	17:29	2.8	8.0	0.2	1-4 25%	0.4-2.2 18%	0-0.4 0%	4.4	1.4	3.0	-	0.4	1.6	0.8	0.8	-	0.6	-	-	4.2	1.2-5.0 24%	11.0	7.2
20	Grabauskas	PEN	231	24	20:49	8.8	19.4	0.7	3-7 43%	-	2.2-3.0 73%	5.9	2.3	3.6	1.4	0.2	2.1	1.0	1.0	-	2.8	-	0.6	7.7	3.3-6.0 55%	-62.0	-7.7
21	Olmos	GRA	230	21	13:48	6.1	22.1	0.4	2-5 40%	0-0.1 0%	1.5-2.2 68%	2.6	0.9	1.7	0.9	0.5	3.2	1.1	1.9	0.1	2.5	0.5	0.3	6.1	1.9-4.9 39%	-1.0	-
22	Galan Pozo	ALI	230	24	22:38	8.3	17.8	1.7	3-6 50%	0.3-1.1 27%	2.1-2.8 75%	4.2	1.5	2.7	1.3	0.6	3.0	1.6	1.3	-	2.8	0.6	0.3	10.3	3.3-8.6 38%	112.0	11.0
23	Mendiola	ALI	229	21	10:01	3.3	16.1	0.3	1-2 50%	-	0.9-1.2 75%	2.5	0.5	2.0	0.2	0.2	2.1	1.0	1.1	-	1.2	0.4	0.1	5.0	1.8-3.9 46%	16.0	9.1
24	Mbaye	LLE	228	20	16:13	5.6	16.6	0.7	2-4 50%	0.1-0.1 100%	1.3-2.1 62%	2.9	1.3	1.7	0.9	0.4	2.2	0.8	1.4	-	1.8	0.5	0.2	6.8	2.6-6.2 42%	-78.0	-11.1
25	Serrano	OUR	228	17	'11	4.4	19.8	0.4	2-3 67%	-	1.2-1.8 67%	2.9	0.8	2.2	1.1	0.3	1.0	0.5	0.5	-	1.5	0.1	0.2	4.7	1.9-3.4 56%	-66.0	-16.8
26	Rosa Pompidó	CAS	228	21	17:21	6.4	17.6	0.6	2-6 33%	1.0-2.8 36%	1.2-1.7 71%	4.1	1.6	2.5	1.0	0.4	1.7	0.6	1.1	0.1	1.8	0.5	0.2	8.0	2.8-6.6 42%	-66.0	-5.8
27	Eleraky	RC	226	3	12:45	2.7	10.4	-	0-2 0%	-	2.0-3.7 54%	2.3	1.3	1.0	0.3	-	1.3	0.7	0.7	-	2.7	0.7	-	6.3	2.3-6.3 37%	8.0	12.8
28	Toncinic	CAS	224	9	23:57	7.1	15.1	1.4	3-10 30%	0.1-3.3 3%	1.7-2.0 85%	5.7	1.6	4.1	1.3	0.3	1.2	0.3	0.9	-	1.3	0.4	0.7	13.4	5.9-10.7 55%	-100.0	-22.2
29	Ortega Soriano	ALI	224	24	20:05	5.3	12.8	1.2	2-4 50%	0.4-1.4 29%	1.1-1.6 69%	3.6	2.0	1.6	0.7	0.8	2.6	1.0	1.5	-	1.8	0.2	0.1	7.9	2.8-6.0 47%	60.0	7.8
30	Doorson	MAR	-	24	21:37	6.5	14.9	0.4	3-5 60%	-	0.6-1.5 40%	6.2	2.1	4.1	1.0	0.3	2.5	1.4	1.1	-	1.6	1.3	0.2	10.1	4.0-9.1 44%	-154.0	-14.1
31	Mazaira	MAR	-	15	17:33	6.8	18.4	0.3	2-6 33%	1.8-4.5 40%	0.1-0.1 100%	3.8	0.3	3.5	0.3	0.3	2.8	1.4	1.3	-	0.2	0.2	0.1	8.6	2.9-5.9 49%	-50.0	-6.6
32	Sikiras	MAR	-	2	13:37	6.0	19.7	1.0	2-5 40%	1.5-2.5 60%	0.5-1.0 50%	1.0	-	1.0	1.0	0.5	1.5	1.0	0.5	-	2.0	-	0.5	4.5	1.0-2.5 40%	-4.0	-16.8
33	Okoroh	ALI	-	1	3:51	-	-	-	-	-	-	1.0	-	1.0	-	-	-	-	-	-	-	-	-	-	-	-6.0	-77.8

Forwards

		InStat Index	Matches	Minutes	Points	/100 poss	Assists	Field goals	3-pt field goals	Free throws	REBOUNDS				FOULS				BLK	BLK against	Opp Points	Opponents field goals	+/-	Net rating			
											Total	Offense	Defense	Turnov	Steals	Fouls	Reason	Unreason							Tech	Against	
1 Powell	BRE	244	12	21:48	12.5	28.2	1.1	5-10 50%	1.3-2.7 48%	1.2-1.6 75%	5.8	2.7	3.1	1.3	0.7	3.1	1.5	1.5	-	1.1	0.1	0.6	9.4	3.0-6.5	46%	93.0	19.3
2 Larsen	MAR	244	24	24:18	14.3	28.9	2.4	5-10 50%	0.4-1.0 40%	4.3-5.2 83%	6.2	2.3	4.0	1.0	0.7	1.7	0.9	0.8	-	4.8	0.4	0.8	8.6	3.4-8.0	43%	10.0	-0.2
3 Sidibe	MEL	240	23	20:23	10.2	24.5	0.9	4-7 57%	-	1.8-2.5 72%	6.6	2.2	4.4	1.3	0.3	3.0	1.5	1.6	-	2.4	0.3	0.2	8.3	3.0-7.1	42%	14.0	2.5
4 Gavrilovic	BRE	240	16	19:29	8.8	21.2	1.1	3-7 43%	0.9-2.1 43%	1.6-2.5 64%	5.1	1.7	3.4	1.4	0.9	2.5	0.7	1.8	0.1	3.0	0.2	0.9	6.2	1.9-5.1	37%	37.0	4.1
5 Blackwell	LEY	239	21	23:47	10.9	21.9	1.0	4-8 50%	-	2.0-3.1 65%	7.1	2.6	4.5	2.1	0.6	3.2	1.5	1.6	-	3.1	0.6	0.6	10.1	3.7-9.1	41%	27.0	3.9
6 Soluade	BRE	238	23	20:43	7.2	16.7	3.1	2-5 40%	2.0-4.3 47%	0.4-0.7 57%	3.3	0.4	2.9	1.4	1.1	2.2	1.0	1.2	-	0.7	0.2	0.1	6.8	2.0-4.7	43%	81.0	9.1
7 Murphy	GIP	238	24	25:22	11.3	21.7	1.1	4-10 40%	1.3-4.6 28%	1.5-2.2 68%	3.3	0.6	2.8	0.8	0.7	2.1	1.0	1.2	-	2.1	0.4	0.4	7.9	2.9-7.4	39%	97.0	7.9
8 Jawara	GIP	237	23	17:13	4.8	13.5	0.9	2-4 50%	0.1-0.7 14%	1.3-1.8 72%	3.2	1.2	2.0	0.7	0.6	2.3	1.1	1.0	-	1.7	0.2	0.1	5.2	1.7-4.5	38%	49.0	5.0
9 Motos	GIP	237	20	18:59	6.1	15.6	1.2	2-6 33%	0.7-2.6 27%	0.8-1.2 67%	3.1	1.0	2.1	1.0	1.1	1.8	0.9	0.9	-	1.7	0.3	0.3	5.2	1.7-5.0	34%	30.0	3.4
10 Federico	VAL	236	23	23:38	9.1	18.9	1.6	3-7 43%	1.9-4.7 40%	1.2-1.3 92%	5.0	1.7	3.3	0.9	0.9	2.0	1.0	1.0	-	1.7	0.1	0.2	8.6	3.0-7.2	42%	141.0	13.3
11 Garcia	CAS	236	19	23:18	10.0	20.5	2.6	4-8 50%	0.4-1.6 25%	2.1-3.2 66%	6.4	1.4	5.0	1.2	0.9	2.7	1.4	1.2	0.1	3.1	0.5	0.2	10.1	3.7-7.7	48%	20.0	2.2
12 De Thaeys	BRE	236	7	23:14	8.6	17.4	0.6	3-7 43%	0.7-2.6 27%	1.9-2.1 90%	6.0	1.6	4.4	0.4	0.4	1.0	0.4	0.6	-	2.1	0.1	0.1	8.7	3.4-8.0	43%	22.0	0.1
13 Cleare	LLE	236	23	24:17	11.4	23.3	1.3	5-9 56%	0.1-0.1 100%	1.3-1.7 76%	4.9	1.6	3.3	1.7	0.5	2.9	1.6	1.2	0.1	2.4	0.6	0.2	10.2	3.9-8.9	44%	-33.0	-2.6
14 Jasaitis	MAR	236	23	22:14	9.5	21.2	1.6	3-7 43%	1.8-4.2 43%	1.2-1.4 86%	3.3	0.7	2.6	0.8	0.8	1.2	0.6	0.6	-	1.2	-	0.2	5.5	2.1-4.7	45%	83.0	7.7
15 Arteaga	OB	235	17	21:45	10.8	23.9	0.9	4-7 57%	-	3.1-4.2 74%	6.1	1.1	5.0	1.5	0.4	1.8	0.7	1.2	-	4.4	0.9	0.7	7.5	3.2-8.7	37%	-48.0	-4.8
16 Mutic	GIP	235	19	7:03	2.1	13.9	0.3	1-2 50%	0.2-0.8 25%	0.1-0.4 25%	1.7	0.8	0.9	0.4	0.5	0.8	0.3	0.4	-	0.3	0.1	0.1	3.0	1.1-3.2	34%	6.0	4.7
17 Zegeren	CAS	235	22	21:22	9.6	21.3	0.6	4-7 57%	-	1.6-3.6 44%	6.8	2.5	4.3	1.4	0.6	3.0	1.3	1.6	-	3.6	1.1	0.4	9.7	3.8-9.0	42%	-9.0	-0.7
18 Bulic	MEL	234	23	18:38	6.4	16.6	1.0	2-6 33%	0.3-1.5 20%	1.1-1.4 79%	4.5	1.1	3.4	1.2	0.7	2.0	0.9	1.1	-	1.7	0.1	0.4	6.4	2.2-5.0	44%	12.0	2.2
19 Rubio	GRA	234	24	22:58	10.8	23.1	1.9	3-7 43%	0.4-0.8 50%	3.8-4.4 86%	5.5	1.2	4.3	1.8	1.0	2.3	0.6	1.5	-	4.4	-	0.5	8.5	3.0-6.9	43%	4.0	-1.8
20 Bilbao	CAC	234	24	18:54	8.1	20.4	0.6	3-5 60%	0 -0.2 0%	2.5-4.0 63%	5.3	2.3	3.0	1.0	0.8	2.8	1.2	1.5	-	3.5	-	0.3	8.4	3.1-6.5	48%	61.0	5.8
21 Hamilton	LEY	233	10	25:51	12.1	22.0	1.6	4-9 44%	0.9-3.2 28%	3.4-4.2 81%	4.9	0.9	4.0	1.5	1.0	2.4	0.9	1.3	-	3.4	0.2	0.2	8.9	3.4-8.5	40%	34.0	5.7
22 Belemene	MEL	233	8	12:36	3.8	14.7	0.5	1-3 33%	0.6-1.8 33%	0.4-0.5 80%	2.5	0.8	1.8	0.6	0.5	1.5	0.5	1.0	-	0.9	0.4	-	3.6	1.1-4.9	22%	-2.0	6.1
23 Stutz	LLE	233	23	28:38	13.2	22.6	0.7	5-9 56%	1.1-2.6 42%	2.2-2.9 76%	7.7	2.5	5.2	1.2	0.7	1.8	1.0	0.8	0.1	2.9	1.4	0.4	10.4	4.1-9.0	46%	-72.0	-5.3
24 Sima	OUR	232	7	18:07	8.7	24.8	0.6	3-6 50%	-	2.1-3.6 58%	4.6	1.4	3.1	1.3	0.1	2.3	1.1	1.1	-	2.7	0.6	0.4	6.4	2.1-5.7	37%	-40.0	-14.2
25 Kuiper	CAC	232	23	24:53	9.0	17.7	1.1	3-7 43%	1.0-2.8 36%	1.1-1.9 58%	5.1	1.0	4.1	1.4	0.4	1.8	0.7	1.0	-	2.0	0.3	0.2	7.6	2.8-6.4	44%	35.0	3.4
26 Skara	PEN	232	24	26:15	12.2	22.2	1.2	5-11 45%	0.5-2.4 21%	2.1-2.8 75%	6.0	1.8	4.2	1.6	0.8	1.5	0.5	1.0	-	2.5	0.5	0.5	10.7	4.3-10.1	43%	-64.0	-5.9
27 Nuutinen	OB	231	17	28:32	9.2	15.7	1.1	4-7 57%	1.1-2.7 41%	0.8-1.0 80%	3.9	1.1	2.9	0.9	0.8	3.4	1.4	1.9	-	1.5	0.1	0.3	8.9	3.1-7.1	44%	-86.0	-6.3
28 Reyes	OB	231	13	30:27	12.9	20.4	1.4	4-10 40%	2.1-6.6 32%	2.5-3.0 83%	8.0	1.6	6.4	2.1	0.8	1.7	0.9	0.8	-	2.9	0.2	0.3	9.5	3.6-8.7	41%	-73.0	-5.9
29 Blazquez Lopez	OB	231	15	10:33	3.1	14.4	0.4	1-3 33%	0.3-0.9 33%	0.4-0.7 57%	1.6	0.5	1.1	0.3	0.1	1.2	0.9	0.3	-	0.5	-	0.2	2.6	0.8-2.3	35%	-37.0	-10.4
30 Bader	MAR	231	24	20:01	9.4	23.4	1.0	3-8 38%	1.8-4.4 41%	1.0-1.1 91%	1.8	0.3	1.5	0.9	0.5	2.5	1.2	1.2	-	1.2	-	0.3	5.9	1.9-4.0	48%	36.0	3.7
31 Nogues	BRE	231	12	12:47	2.3	9.0	0.5	1-3 33%	0.3-1.7 18%	0.3-0.4 75%	2.4	0.8	1.6	0.8	0.3	1.6	0.4	1.1	0.1	0.7	0.1	0.3	4.3	1.4-3.7	38%	-15.0	-0.5
32 Jakstas	OB	230	22	25:55	10.7	19.9	1.8	4-8 50%	0.5-1.2 42%	2.9-4.1 71%	3.6	0.8	2.8	2.1	0.8	3.0	1.4	1.5	0.1	4.9	1.0	0.4	11.9	4.7-11.3	42%	-56.0	-2.7
33 Martinez	OUR	230	24	24:04	8.2	16.3	1.3	3-7 43%	2.0-5.5 36%	0.4-0.5 80%	3.0	0.5	2.6	0.7	0.5	1.8	1.0	0.7	-	0.5	0.2	-	8.1	3.0-7.6	39%	20.0	-5.1
34 Lindqvist	MP	230	24	16:44	6.7	18.8	0.5	2-6 33%	1.2-3.3 36%	1.2-1.4 86%	2.3	0.4	1.9	1.0	0.4	2.2	0.9	1.3	-	1.4	0.3	0.2	4.6	1.7-4.2	40%	51.0	7.7
35 Pardina	GRA	230	23	20:44	7.2	16.9	0.8	2-6 33%	1.2-2.6 46%	1.2-1.7 71%	5.0	1.6	3.5	0.7	0.7	1.6	1.0	0.6	-	1.9	0.1	0.2	6.7	2.4-5.3	45%	34.0	-0.7
36 Adekoyo	VAL	230	24	17	4.2	12.1	0.8	1-5 20%	0.4-1.5 27%	1.0-1.5 67%	2.5	0.8	1.8	0.8	0.7	2.0	0.8	1.2	-	1.5	0.2	0.4	4.1	1.1-2.9	38%	3.0	1.4
37 Schaftenaar	RC	230	24	23:43	10.9	22.2	1.4	4-9 44%	2.0-5.1 39%	1.0-1.1 91%	3.8	0.9	2.9	0.6	1.0	2.1	0.9	1.0	-	0.7	0.3	0.2	9.0	3.4-7.4	46%	-35.0	-2.4
38 Barac	MP	229	24	20:09	6.5	15.4	1.3	2-6 33%	0.4-2.5 16%	1.7-2.1 81%	4.0	1.5	2.6	1.2	0.3	1.9	0.7	1.2	-	2.2	0.5	0.4	6.7	2.6-6.0	43%	31.0	0.9
39 Berg Pedersen	CAC	229	22	15:46	3.6	10.6	0.9	1-3 33%	0.2-1.2 17%	0.8-1.4 57%	3.4	1.2	2.2	0.8	0.8	2.4	1.0	1.4	-	1.9	0.4	0.2	6.3	2.2-5.3	42%	97.0	11.7
40 Marti	LLE	229	15	15:34	6.9	20.6	0.7	2-6 33%	0.7-1.9 37%	1.6-2.4 67%	2.9	1.4	1.5	0.9	0.4	2.5	1.1	1.4	-	2.5	0.1	0.5	6.5	2.4-5.4	44%	-10.0	-0.9
41 Jankovic	CAC	228	7	7:55	1.7	10.2	0.1	1-3 33%	0.3-1.9 16%	-	0.7	-	0.7	0.1	0.3	1.0	0.6	0.4	-	0.1	-	-	2.3	0.7-2.6	27%	2.0	1.7
42 Nikolic	CAC	228	24	18:04	7.0	18.2	1.0	2-6 33%	0.7-2.5 28%	1.6-2.2 73%	2.6	0.8	1.8	1.5	0.5	2.3	1.3	1.0	-	2.0	-	0.2	6.6	2.1-4.7	45%	-4.0	-0.9
43 Onwenu	ALI	228	23	15:52	7.2	20.7	0.4	3-6 50%	1.0-2.9 34%	0.7-0.9 78%	2.2	0.8	1.4	0.6	0.5	1.7	1.0	0.7	-	0.8	0.4	0.4	5.8	1.9-5.0	38%	17.0	2.5
44 Tomas	MP	227	13	11:40	4.5	18.5	0.2	2-4 50%	1.1-2.3 48%	0.4-0.5 80%	1.9	0.4	1.5	0.6	0.1	0.8	0.2	0.5	-	0.6	-	0.2	5.0	1.9-3.1	61%	-4.0	-2.1
45 Grytsak	PEN	227	19	8:58	1.1	5.4	0.5	0-2 0%	0.1-0.5 20%	0.2-0.5 40%	1.6	0.6	1.0	0.5	0.7	1.9	0.9	1.0	-	0.5	0.7	0.3	4.1	1.2-4.1	29%	-1.0	1.8
46 Tshikaya	OUR	227	22	11:18	4.0	17.2	0.3	2-3 67%	0.3-1.4 21%	0.6-0.8 75%	3.1	0.8	2.2	0.7	0.3	1.3	0.4	0.9	0.1	1.1	0.4	0.1	4.8	1.6-3.9	41%	-122.0	-22.4
47 Gil	RC	226	23	23:41	6.6	13.2	0.9	3-6 50%	-	0.7-1.6 44%	5.3	2.3	3.0	1.0	0.5	2.5	1.4	1.1	-	1.8	0.5	0.1	10.7	3.7-8.0	46%	-65.0	-5.2



Forwards

		InStat Index	Matches	Minutes	Points	/100 poss	Assists	Field goals					REBOUNDS			FOULS					BLK	BLK against	Opp Points	Opponents field goals	+/-	Net rating					
								1-1	100%	0.2-0.5	40%	0.2-0.2	100%	Total	Offense	Defense	Turnov	Steals	Fouls	Reason							Unreason	Tech	Against		
48	Jimenez	RC	226	6	3:41	1.7	20.0	0.3	1-1	100%	0.2-0.5	40%	0.2-0.2	100%	0.8	0.3	0.5	-	0.3	0.2	-	0.2	-	0.5	-	-	0.3	0.2-0.5	40%	15.0	23.6
49	Seibring	RC	225	19	14:25	4.7	15.4	0.5	2-4	50%	1.1-2.6	42%	0.4-0.4	100%	1.8	0.4	1.4	0.1	0.1	1.3	0.7	0.4	-	0.6	0.1	0.1	5.3	2.0-4.7	43%	-36.0	-6.2
50	Witlinski	MEL	225	10	11:24	2.1	9.1	0.5	1-3	33%	0.1-1.2	8%	0.2-0.8	25%	1.1	0.7	0.4	1.0	0.5	1.6	0.5	1.0	-	0.7	0.1	0.3	5.1	1.8-3.5	51%	-38.0	-13.5
51	De Blas	PEN	225	23	12:44	1.8	6.4	0.6	1-2	50%	0.3-1.1	27%	0.3-0.3	100%	2.3	0.5	1.7	0.4	0.6	1.6	0.6	0.9	-	0.4	0.1	0.1	4.5	1.4-3.4	41%	-40.0	-7.0
52	Corvalan	RC	224	23	16:52	6.4	18.1	2.8	2-6	33%	0.5-2.3	22%	2.0-2.6	77%	1.4	0.4	1.0	1.9	0.9	2.5	1.0	1.5	-	3.7	-	0.2	4.7	1.6-3.5	46%	-91.0	-7.0
53	Gonzalez	ALI	223	11	2:43	0.8	12.2	0.1	0-1	0%	0-0.1	0%	0.6-0.7	86%	0.1	-	0.1	0.6	0.2	0.3	-	0.3	-	0.6	-	0.3	0.8	0.4-0.8	50%	-18.0	-28.2
54	Gilchrist	VAL	222	2	7:52	2.0	13.3	-	1-3	33%	0-0.5	0%	-	-	2.0	0.5	1.5	-	0.5	1.0	0.5	0.5	-	0.5	0.5	0.5	5.0	2.5-4.0	63%	-11.0	-32.0
55	Urdiain	PEN	220	5	'9	3.2	16.0	0.4	1-3	33%	0.6-1.8	33%	0.2-0.4	50%	1.4	-	1.4	0.4	-	0.8	0.2	0.6	-	0.2	0.4	-	2.6	1.2-3.8	32%	4.0	6.6
56	Holmes	RC	219	5	11:55	5.6	21.9	0.6	1-4	25%	0.6-2.0	30%	3.0-3.6	83%	2.0	0.4	1.6	0.6	-	2.4	0.6	1.6	0.2	1.8	0.2	0.2	7.6	2.6-3.6	72%	-17.0	-14.9
57	Diaz	MAR	-	24	28:27	10.4	18.0	1.3	4-10	40%	0.9-3.4	26%	1.9-2.5	76%	6.6	2.1	4.5	1.0	1.3	2.7	1.3	1.3	-	2.7	0.3	0.5	8.6	3.3-8.0	41%	-170.0	-9.5
58	Gilling	ALM	-	23	22:58	7.9	16.3	1.9	3-7	43%	1.6-4.0	40%	1.0-1.2	83%	2.9	0.7	2.1	1.3	0.5	2.4	1.2	1.2	-	1.3	0.1	0.2	8.9	3.0-6.6	45%	-93.0	-8.5
59	Cvetinovic	ALM	-	23	30:02	15.2	24.0	1.5	6-12	50%	1.2-3.1	39%	2.2-3.4	65%	5.1	1.8	3.3	1.3	1.4	2.5	1.2	1.3	-	3.7	-	0.7	9.1	3.3-8.8	38%	4.0	0.9
60	Badmus	MAR	-	23	30:23	12.7	20.4	0.7	4-10	40%	1.3-4.1	32%	3.1-3.9	79%	5.8	1.9	4.0	1.7	0.8	2.4	1.1	1.2	-	3.5	0.4	0.4	10.4	3.7-8.6	43%	-147.0	-7.8
61	Seoane	MAR	-	23	6:06	1.7	12.2	-	1-1	100%	0.5-1.1	45%	0-0.1	0%	1.0	0.2	0.8	0.2	-	0.7	0.4	0.3	-	0.4	-	0.1	2.3	0.7-1.3	54%	-57.0	-23.5
62	Quinn	MAR	-	7	12:40	5.3	20.7	-	2-3	67%	-	-	1.3-1.9	68%	2.9	1.1	1.7	1.1	-	3.1	1.3	1.9	-	1.4	-	0.1	8.4	2.6-5.3	49%	-57.0	-26.4
63	Ballespin	MEL	-	3	2:36	-	-	0.3	-	-	-	-	-	-	-	-	-	-	-	-	-	-	-	-	-	-	0-0.3	0%	-	27.8	
64	Carroll	MAR	-	3	13:45	2.0	7.2	-	1-3	33%	0.7-2.3	30%	0-0.7	0%	1.0	0.3	0.7	0.7	-	3.7	1.3	2.0	-	0.3	-	-	11.3	3.0-4.7	64%	-29.0	-17.9

 Guards

		InStat Index	Matches	Minutes	Points	/100 poss	Assists	Field goals				Free throws		REBOUNDS				FOULS				BLK against	Opp Points	Opponents field goals	+/-	Net rating					
								3-pt	field goals	%	%	%	%	Total	Offense	Defense	Turnov	Steals	Fouls	Reason	Unreasion						Tech	Against	BLK		
1	Timmer	GIP	244	8	24:50	15.9	31.0	3.3	5-11	45%	2.3-4.4	52%	2.9-3.6	81%	2.5	0.5	2.0	1.8	0.4	1.8	0.5	1.1	-	2.6	-	0.6	6.8	2.4-7.0	34%	64.0	16.0
2	Agada	MEL	244	23	25:53	14.6	26.9	4.0	6-13	46%	0.7-2.3	30%	2.6-4.3	60%	5.3	1.6	3.7	2.6	2.3	3.0	1.2	1.7	0.1	4.6	0.3	0.7	9.6	3.0-6.4	47%	104.0	7.3
3	Dee	GIP	243	24	27:32	15.3	26.9	2.6	5-13	38%	2.9-7.1	41%	1.6-1.9	84%	3.8	0.4	3.4	1.2	1.1	2.4	0.9	1.4	-	2.5	-	0.6	8.0	2.8-6.2	45%	143.0	11.0
4	Kinoshita	CAS	243	8	2:20	0.9	18.5	0.3	0-1	0%	0.1-0.4	25%	-	-	0.1	-	0.1	0.4	-	0.1	-	0.1	-	-	-	-	0	-0.3	0%	19.0	51.8
5	Diaz	BRE	241	24	20:17	8.1	19.2	4.2	3-6	50%	1.1-2.8	39%	1.1-1.5	73%	2.2	0.5	1.8	1.9	1.0	2.8	1.0	1.7	-	3.1	-	0.2	6.1	1.6-3.5	46%	67.0	5.6
6	Sollazzo	GIP	241	24	24:24	10.1	20.2	1.5	4-9	44%	0.6-2.5	24%	1.7-2.2	77%	3.1	0.6	2.5	1.4	0.6	1.9	1.1	0.8	-	2.3	0.3	0.3	6.4	2.2-6.3	35%	102.0	8.5
7	Alonso	OB	241	3	26:45	21.3	41.0	2.0	6-15	40%	3.7-9.7	38%	5.0-5.7	88%	3.3	1.0	2.3	1.3	0.3	3.3	1.7	1.7	-	4.3	-	-	16.0	5.3-9.3	57%	-5.0	0.5
8	Pena	BRE	240	20	22:43	11.0	23.3	2.7	4-10	40%	2.0-6.1	33%	0.5-0.9	56%	3.5	0.8	2.7	1.4	0.9	1.9	0.9	0.9	-	1.9	0.1	0.1	5.9	1.9-4.4	43%	61.0	7.5
9	Matulionis	MEL	240	24	29:31	11.4	18.4	2.3	4-10	40%	2.5-6.1	41%	0.8-1.3	62%	3.6	1.4	2.3	1.5	0.9	2.4	0.9	1.5	-	2.0	0.2	0.2	7.5	2.3-6.3	37%	112.0	5.9
10	Bartley IV	VAL	239	24	30:03	16.4	26.2	2.5	6-14	43%	2.0-6.6	30%	3.4-5.0	68%	3.2	0.6	2.6	1.5	1.8	1.3	0.5	0.8	-	4.1	0.3	0.5	8.2	2.9-7.8	37%	33.0	1.1
11	Ahonen	BRE	239	18	21:13	9.7	21.7	3.2	3-7	43%	2.3-4.9	47%	1.3-1.4	93%	2.0	0.6	1.4	1.1	0.7	2.2	0.7	1.4	-	2.3	-	0.2	8.1	2.6-5.8	45%	49.0	2.9
12	Arco	BRE	238	23	21	9.8	22.2	1.6	3-8	38%	1.7-4.2	40%	1.3-1.6	81%	2.0	0.3	1.7	0.8	0.6	2.0	0.9	1.1	-	2.2	-	0.3	5.4	1.5-4.0	38%	71.0	5.3
13	Niang	MAR	238	11	20:08	10.3	23.9	2.6	4-10	40%	1.6-4.8	33%	0.9-1.8	50%	0.8	0.1	0.7	1.9	0.8	1.7	0.8	0.7	-	1.5	0.1	0.1	4.4	1.4-3.9	36%	-30.0	-5.8
14	Uriz	CAC	237	21	21:46	12.0	25.8	4.3	4-10	40%	2.3-5.9	39%	2.1-2.8	75%	2.6	0.6	2.0	2.1	0.7	0.7	0.2	0.5	-	3.1	0.1	0.3	5.9	2.2-5.5	40%	123.0	9.7
15	Leimanis	VAL	237	24	23:41	8.9	18.5	3.6	3-9	33%	1.0-3.6	28%	1.1-1.4	79%	1.7	0.3	1.3	1.1	0.7	2.3	1.3	1.0	-	1.3	-	0.3	7.3	2.7-7.0	39%	76.0	7.9
16	Brown	BRE	237	2	25:16	10.5	20.6	3.5	3-7	43%	1.5-4.0	38%	3.0-4.0	75%	2.5	0.5	2.0	1.0	0.5	1.5	1.0	0.5	-	3.0	-	-	2.5	0.5-2.5	20%	5.0	2.3
17	Wintering	PEN	237	11	29:52	13.5	20.9	4.6	4-10	40%	0.5-1.3	38%	4.3-5.4	80%	4.2	1.1	3.1	2.6	1.3	2.9	1.6	1.4	-	6.6	0.1	0.6	6.6	2.3-6.7	34%	-50.0	-9.9
18	Peciukevicius	LEY	237	19	21:37	8.6	18.8	4.4	3-7	43%	0.3-1.6	19%	2.0-3.0	67%	3.0	0.7	2.3	1.2	1.3	2.8	1.4	1.5	-	3.3	0.2	-	7.4	2.5-5.1	49%	123.0	14.2
19	Joseph	CAC	236	22	22:01	9.9	21.8	0.8	4-8	50%	0 - 0.1	0%	2.1-3.5	60%	6.8	2.5	4.3	1.4	0.6	1.5	0.7	0.8	-	2.6	0.4	0.6	9.1	3.8-8.8	43%	22.0	3.0
20	Urtasun Uriz	OUR	236	2	26:20	17.0	32.4	3.0	6-13	46%	1.0-3.5	29%	5.0-5.0	100%	0.5	-	0.5	1.5	-	-	-	-	-	3.0	-	0.5	4.5	2.0-5.0	40%	-3.0	-4.7
21	Oroz	GIP	236	24	20:59	3.6	8.4	3.2	1-3	33%	0.4-1.6	25%	0.5-0.8	63%	3.9	1.0	2.9	1.3	1.4	1.2	0.6	0.6	-	0.8	0.2	0.2	6.8	2.6-6.7	39%	63.0	5.6
22	Misters	MEL	234	24	21:24	10.0	22.7	1.6	3-8	38%	2.0-5.6	36%	1.0-1.3	77%	1.9	0.3	1.5	0.9	0.5	2.0	0.8	1.1	-	1.4	-	-	6.8	2.3-5.4	43%	40.0	3.7
23	Kamba	LEY	234	24	26:24	10.5	19.2	1.3	4-8	50%	1.3-3.2	41%	1.7-2.8	61%	2.8	0.9	1.9	1.4	0.7	2.0	0.8	1.2	-	2.6	0.3	0.4	7.0	2.5-7.0	36%	-1.0	2.1
24	Xavier	LEY	234	24	25:46	10.9	20.3	3.1	4-11	36%	2.3-7.5	31%	1.0-1.2	83%	3.8	0.5	3.3	2.2	1.4	1.5	0.6	1.0	-	1.8	-	0.1	6.3	2.3-6.3	37%	-44.0	-3.3
25	Gonzalez	MP	234	16	15:33	4.8	14.9	0.5	2-4	50%	-	-	0.8-1.8	44%	3.9	1.8	2.2	0.8	0.4	2.7	1.1	1.6	-	1.6	0.4	0.2	6.4	2.1-5.3	40%	6.0	-0.4
26	Bivia	MP	233	24	19:28	8.1	19.7	2.2	3-7	43%	1.7-4.8	35%	0.8-1.0	80%	2.3	0.5	1.9	1.3	0.8	2.3	1.4	0.8	-	1.2	0.4	0.2	7.0	2.2-5.8	38%	128.0	10.4
27	Lofberg	MP	233	24	23:28	11.1	22.6	1.2	4-8	50%	1.1-3.1	35%	2.0-2.5	80%	3.7	0.9	2.8	1.9	0.7	1.9	0.8	1.0	-	2.5	0.3	0.2	6.8	2.3-6.3	37%	54.0	4.5
28	Grimau	MAR	233	24	18:39	6.2	16.3	2.1	2-5	40%	0.3-1.7	18%	1.1-1.3	85%	2.3	0.4	1.9	1.3	0.5	2.0	1.0	0.9	0.1	1.8	-	0.1	4.4	1.6-4.2	38%	80.0	9.7
29	Rodriguez	MAR	233	24	25	8.8	17.6	5.2	3-6	50%	0.9-2.4	38%	2.4-2.8	86%	1.9	0.5	1.5	1.6	0.5	1.4	0.8	0.5	-	2.8	0.1	0.3	10.0	3.6-7.8	46%	17.0	1.4
30	Jorgensen	MAR	233	24	19	7.8	20.2	1.9	3-7	43%	1.0-3.2	31%	0.5-0.7	71%	1.6	0.3	1.3	1.0	0.6	1.8	0.8	0.9	-	1.1	-	0.3	5.3	1.7-4.3	40%	62.0	7.1
31	Luke	MEL	233	23	11:27	1.8	7.9	2.8	1-2	50%	0.4-1.6	25%	0.1-0.2	50%	1.0	0.2	0.7	0.7	0.2	1.3	0.6	0.7	-	0.4	0.1	-	3.7	1.4-3.1	45%	45.0	12.8
32	Hernandez	MP	233	16	22:52	8.8	18.7	3.9	3-7	43%	0.6-1.6	38%	3.0-3.4	88%	2.4	0.3	2.1	1.6	0.6	1.4	0.7	0.7	-	3.5	0.1	0.3	5.8	2.1-5.5	38%	-25.0	-3.8
33	Llompard Uson	ALI	232	23	23:44	7.4	14.4	6.5	2-6	33%	1.3-3.4	38%	1.4-1.5	93%	2.6	0.4	2.2	2.7	0.8	2.0	0.9	1.0	-	3.0	0.1	0.1	4.9	1.7-4.8	35%	100.0	8.0
34	Coggins	OB	232	7	26:36	10.3	18.4	2.0	4-10	40%	1.3-5.9	22%	1.9-2.6	73%	3.7	0.6	3.1	2.6	1.1	2.0	1.0	0.9	-	2.1	0.3	0.3	7.9	3.0-7.7	39%	-23.0	-4.5
35	Alvarado	OUR	232	23	24:32	7.2	14.2	5.9	2-6	33%	1.2-3.4	35%	1.6-2.1	76%	3.3	0.6	2.7	1.8	0.6	1.2	0.5	0.7	-	3.5	-	0.3	6.8	2.6-6.7	39%	-11.0	-5.7
36	Cuevas Simarro	MEL	232	23	14:41	4.8	15.6	2.1	2-4	50%	0.8-2.9	28%	0.9-1.1	82%	1.7	0.3	1.4	0.9	0.6	0.7	0.4	0.3	-	1.5	-	0.1	5.7	2.1-4.7	45%	30.0	4.7
37	Wade-Chatman	CAS	232	24	23:42	12.3	24.5	2.1	4-10	40%	1.8-4.4	41%	2.3-2.7	85%	2.3	0.4	1.9	2.2	1.0	2.0	0.8	1.2	-	2.6	0.1	0.4	7.3	2.5-6.1	41%	-68.0	-5.5
38	Vecvagars	MAR	231	18	17:37	8.3	22.3	1.7	3-6	50%	1.2-2.9	41%	1.5-1.8	83%	1.6	0.3	1.3	1.8	0.4	1.7	0.8	0.7	-	2.4	0.1	0.3	6.3	2.1-5.2	40%	86.0	10.4
39	Olumuyiwa	MP	231	23	17:59	4.0	10.6	0.7	2-3	67%	-	-	0.6-1.3	46%	6.5	1.8	4.7	1.3	0.3	2.1	0.9	1.3	-	1.4	1.0	0.2	7.3	2.7-6.1	44%	61.0	7.9
40	Djukanovic	CAS	231	22	23:41	13.1	26.2	2.4	4-9	44%	1.5-4.5	33%	3.6-4.3	84%	1.5	0.2	1.2	1.6	0.9	1.3	0.8	0.5	-	3.3	0.1	0.4	6.9	2.5-5.1	49%	-38.0	-3.4
41	Bertone	MP	231	22	16:39	6.1	17.4	1.6	2-6	33%	0.9-2.5	36%	0.7-1.0	70%	2.4	0.8	1.6	1.0	0.8	2.0	0.7	1.2	-	1.1	0.1	0.3	5.9	1.7-4.3	40%	11.0	3.6
42	Carter III	PEN	231	24	23:44	11.4	22.8	1.8	4-11	36%	2.0-5.7	35%	0.9-1.2	75%	2.4	0.3	2.1	1.2	0.5	3.0	1.5	1.5	-	1.7	-	0.5	9.4	3.0-6.4	47%	-18.0	-1.6
43	Kullamae	RC	231	22	22:22	12.1	25.8	1.5	5-10	50%	1.6-4.5	36%	1.1-1.5	73%	2.5	0.7	1.8	1.7	0.6	2.7	1.1	1.5	-	1.9	-	0.3	6.5	2.2-5.7	39%	-19.0	0.7
44	Kapelan	GRA	230	24	22:50	11.0	23.7	1.3	4-10	40%	2.1-6.1	34%	1.0-1.3	77%	2.4	0.5	1.9	0.5	0.6	2.4	1.2	1.1	-	1.7	-	0.3	8.0	2.8-5.8	48%	-25.0	-4.8
45	Ventura	CAC	230	24	21:47	5.9	13.3	1.1	2-5	40%	1.4-3.6	39%</																			

 Guards

		InStat Index	Matches	Minutes	Points	/100 poss	Assists	Field goals	3-pt field goals	Free throws	REBOUNDS				FOULS						BLK	BLK against	Opp Points	Opponents field goals	+/-	Net rating					
											Total	Offense	Defense	Turnov	Steals	Fouls	Reason	Unreason	Tech	Against											
48	Wright	OB	230	15	15:39	4.0	12.3	0.7	2-4	50%	—	0.8-1.5	53%	4.0	1.5	2.5	1.0	0.7	2.0	0.6	1.4	—	1.5	0.3	0.5	4.3	1.9-5.5	35%	-104.0	-22.0	
49	Geks	OB	230	14	29:31	10.3	16.9	1.6	3-8	38%	2.6-6.4	41%	1.1-1.2	92%	3.1	0.6	2.5	1.1	0.9	1.9	0.6	1.2	—	1.5	0.1	—	8.0	3.0-7.4	41%	-29.0	-2.8
50	Fahner Catala	CAS	230	24	23:22	6.5	13.2	4.5	2-6	33%	1.0-2.7	37%	0.9-1.0	90%	2.7	0.6	2.1	1.6	1.4	2.5	1.1	1.4	—	1.9	—	0.3	7.3	2.4-5.3	45%	-10.0	-1.0
51	Rodriguez	GRA	230	20	18:07	6.9	18.6	0.9	2-6	33%	1.8-4.6	39%	0.6-0.6	100%	1.5	0.4	1.1	0.4	0.5	2.3	1.2	1.1	—	0.8	0.2	0.2	4.0	1.2-3.5	34%	-23.0	-1.2
52	Exposito	VAL	229	20	9:05	2.3	12.0	1.0	1-2	50%	0.2-0.6	33%	0.4-0.6	67%	1.5	0.2	1.3	0.5	0.6	1.4	0.7	0.7	—	0.7	0.1	0.1	3.4	1.2-2.1	57%	5.0	2.9
53	Cobos	GRA	229	22	20:57	4.5	10.5	2.4	1-4	25%	0.7-2.2	32%	1.3-1.7	76%	2.3	0.6	1.8	1.0	0.6	1.1	0.7	0.4	—	2.9	0.1	0.3	6.6	2.6-6.3	41%	16.0	-2.3
54	Mackenzie	VAL	229	18	15:39	6.0	18.1	1.2	2-6	33%	0.9-2.8	32%	0.8-0.8	100%	1.1	0.1	1.0	0.8	0.3	1.4	0.6	0.8	—	1.1	0.1	0.3	5.2	1.7-4.1	41%	30.0	3.5
55	Rakocevic	CAC	229	22	23:15	11.0	22.6	0.9	4-9	44%	1.4-4.5	31%	2.1-2.5	84%	2.8	0.4	2.5	1.4	0.7	1.6	1.0	0.6	0.1	2.1	—	0.2	6.1	2.4-5.4	44%	—	-0.9
56	Chapela	LLE	229	23	25:36	8.0	15.6	3.4	3-9	33%	1.4-4.5	31%	0.6-1.2	50%	3.2	0.6	2.6	1.9	0.9	2.2	1.2	0.9	—	2.5	—	0.4	6.8	2.5-6.4	39%	-38.0	-1.9
57	Cardenas Maldonado	PEN	229	18	19:33	5.3	12.8	4.1	2-4	50%	0.9-2.1	43%	0.8-1.2	67%	1.8	0.2	1.7	1.3	0.7	0.9	0.3	0.5	0.1	2.3	—	0.2	5.1	1.8-4.1	44%	3.0	-0.2
58	Santa Ana	LLE	228	22	24:43	8.8	17.4	1.7	3-7	43%	1.6-4.1	39%	1.2-1.6	75%	2.4	0.4	2.0	2.1	0.8	2.0	0.8	1.2	0.1	1.6	0.4	0.2	8.6	3.1-8.2	38%	-3.0	—
59	Sanz	OB	228	14	18:35	2.4	6.6	3.8	1-3	33%	0.4-1.7	24%	0.4-0.4	100%	2.8	0.4	2.4	1.2	0.5	2.0	0.7	1.3	—	0.8	—	0.1	4.1	1.5-3.7	41%	-28.0	-2.7
60	Llorente Paz	OB	228	22	25:13	7.1	13.5	4.9	2-9	22%	1.2-4.6	26%	1.1-1.5	73%	2.1	0.2	1.9	2.8	0.6	3.1	1.3	1.7	0.1	2.3	0.1	0.2	7.4	2.2-6.2	35%	-120.0	-9.2
61	Corts Valdivia	GRA	228	22	14:37	3.9	13.1	2.1	1-4	25%	0.4-1.6	25%	0.6-0.7	86%	0.8	0.3	0.5	1.4	0.2	1.4	0.8	0.5	0.1	1.2	0.1	0.1	4.1	1.3-3.0	43%	11.0	2.3
62	Busquets	ALI	228	16	22:07	6.6	14.4	1.1	2-6	33%	0.7-2.8	25%	1.3-2.3	57%	3.4	0.7	2.8	0.8	1.3	2.4	1.3	1.1	—	1.9	0.4	0.3	7.8	2.6-6.1	43%	128.0	16.9
63	Perez	GRA	227	22	17:43	5.1	14.2	3.1	2-5	40%	1.0-3.1	32%	0.8-0.9	89%	2.5	0.7	1.8	1.2	0.6	1.1	0.4	0.5	0.1	1.6	0.1	0.2	4.0	1.3-3.2	41%	-62.0	-10.8
64	Dedovic	PEN	227	24	22:42	7.3	15.4	1.2	2-6	33%	1.5-3.5	43%	1.0-1.5	67%	3.4	0.4	3.0	1.5	0.8	1.6	0.8	0.8	—	1.8	0.1	0.2	6.4	2.3-5.2	44%	-63.0	-7.1
65	Figueras Lopes	OUR	227	24	17:51	3.6	9.9	3.4	1-4	25%	0.4-1.3	31%	0.4-0.6	67%	1.2	0.3	0.9	1.6	0.6	1.8	0.9	0.9	—	1.7	—	0.3	6.5	2.2-5.8	38%	-73.0	-11.0
66	Maiza	LEY	227	24	20:49	5.9	13.8	3.2	2-6	33%	1.0-3.8	26%	0.8-1.3	62%	1.6	0.5	1.1	1.0	0.4	1.9	0.9	1.0	—	1.9	—	—	9.1	3.3-7.0	47%	-73.0	-4.9
67	Pluta	OUR	227	22	13:55	3.8	13.3	1.1	1-4	25%	0.7-2.4	29%	0.3-0.4	75%	0.9	0.1	0.8	1.0	0.5	0.8	0.4	0.4	—	0.5	0.1	0.4	3.4	1.2-3.1	39%	-32.0	-7.1
68	Thiam	ALI	227	24	11:39	3.1	12.6	0.3	1-3	33%	0.5-1.7	29%	0.2-0.3	67%	2.0	0.5	1.5	0.8	0.5	1.5	0.6	0.9	—	0.3	0.1	0.3	3.5	1.1-3.0	37%	8.0	5.0
69	Martinez Pardo	LEY	226	17	5:12	1.7	14.9	0.2	1-2	50%	0.2-0.8	25%	—	—	0.8	0.2	0.6	0.4	0.2	0.5	0.1	0.4	—	0.2	0.1	0.1	2.4	0.7-1.2	58%	-28.0	-14.4
70	Garcia	CAS	226	4	12:07	2.3	8.7	1.5	1-4	25%	0.5-2.3	22%	0.3-1.0	30%	2.5	1.3	1.3	1.0	1.0	1.0	0.8	0.3	—	1.3	—	—	4.8	2.0-3.5	57%	-42.0	-41.8
71	Sans Valls	LLE	226	23	21:03	5.0	11.4	3.1	2-6	33%	0.8-3.4	24%	0.7-1.0	70%	2.0	0.2	1.9	1.3	0.7	1.4	0.9	0.6	—	1.5	—	0.2	6.3	2.4-5.5	44%	-78.0	-8.0
72	Martin	RC	226	24	23:45	8.7	17.3	4.1	3-8	38%	1.2-4.1	29%	2.3-3.2	72%	2.6	0.5	2.1	2.1	1.4	2.5	1.3	1.1	—	3.4	0.1	0.4	9.3	2.8-5.7	49%	-8.0	-3.4
73	Martinez De La Orden	RC	225	24	24:29	8.4	16.6	1.1	3-8	38%	1.0-3.2	31%	0.7-0.9	78%	4.8	1.6	3.1	0.6	0.7	1.8	0.9	0.9	—	1.4	0.3	0.2	8.2	3.0-6.6	45%	-111.0	-8.6
74	Olafsson	OB	225	7	16:09	3.4	10.4	0.7	1-4	25%	0.6-2.3	26%	0.3-0.6	50%	0.6	0.1	0.4	0.7	—	1.4	0.7	0.6	—	0.3	—	0.1	6.6	2.3-5.0	46%	-45.0	-11.0
75	Tamayo	PEN	224	24	16:18	3.8	11.0	0.8	1-5	20%	0.8-2.5	32%	0.3-0.4	75%	2.0	0.3	1.7	1.1	0.5	1.3	0.5	0.7	—	0.8	0.3	0.1	5.8	2.1-5.5	38%	-62.0	-10.4
76	Llorca	LEY	223	3	9:32	1.7	8.5	0.3	0-2	0%	0-1.0	0%	1.7-1.7	100%	1.3	—	1.3	0.7	0.7	0.3	0.3	—	—	1.7	—	—	1.7	0.7-1.0	70%	-3.0	-1.2
77	Carey	LLE	223	7	12:08	2.4	9.7	1.3	1-4	25%	0.3-1.4	21%	0.7-1.0	70%	2.7	0.9	1.9	0.7	—	1.3	0.3	1.0	—	0.7	0.1	0.4	4.1	1.4-2.9	48%	-7.0	-7.1
78	Chacon	CAC	222	1	1:43	1.0	33.3	—	0-1	0%	0-1.0	0%	1.0-2.0	50%	1.0	—	1.0	—	—	—	—	—	—	1.0	—	—	—	0-1.0	0%	3.0	100.0
79	Lobo	RC	222	24	14:17	5.0	16.8	1.2	2-5	40%	0.5-2.0	25%	1.2-1.4	86%	1.3	0.3	1.0	1.1	0.4	1.2	0.6	0.5	—	1.8	—	0.4	3.6	1.3-3.2	41%	-117.0	-17.0
80	Riley	GRA	220	4	14:30	3.3	11.6	1.0	1-4	25%	0.3-2.8	11%	0.5-0.5	100%	1.5	—	1.5	1.3	0.5	1.0	0.3	0.8	—	0.3	—	—	3.8	1.5-2.8	54%	-22.0	-23.2
81	Huertas	ALM	—	23	19:41	4.5	11.0	1.0	1-4	25%	0.8-2.4	33%	0.7-1.0	70%	1.4	0.2	1.2	1.0	0.4	1.9	1.2	0.7	—	0.9	—	0.3	6.7	2.1-5.1	41%	-63.0	-4.8
82	Maria Cardoso	ALM	—	23	20:46	8.0	18.6	3.4	2-6	33%	0.8-2.6	31%	2.5-2.8	89%	2.2	0.2	2.0	1.4	0.4	1.0	0.3	0.6	—	3.1	—	0.2	5.5	2.1-4.9	43%	-73.0	-7.3
83	Saunders	MAR	—	22	27:37	9.8	17.2	2.8	3-10	30%	1.1-3.6	31%	2.1-2.8	75%	2.6	1.0	1.6	2.1	1.1	2.8	1.0	1.7	—	3.0	0.1	0.5	6.2	2.0-5.4	37%	-126.0	-9.1
84	Graham	ALM	—	20	25:11	9.8	18.5	1.7	4-8	50%	0.3-1.3	23%	2.0-2.6	77%	6.6	2.9	3.7	2.0	1.5	1.6	0.9	0.7	—	2.5	0.7	0.5	8.7	3.2-6.9	46%	-3.0	1.0
85	Hernandez	MAR	—	16	19:48	7.4	17.6	0.9	3-9	33%	0.6-1.9	32%	1.2-2.3	52%	1.8	0.5	1.3	2.1	0.4	2.1	0.7	1.3	—	2.2	0.2	0.3	6.0	1.9-4.7	40%	-153.0	-22.3

 Forwards

		Field goals		Pick 'n' rolls Handler		Pick 'n' rolls Roller		Pick 'n' pops		Post ups		Isolations		Catch and shoots		Catch and drives		Screen off		Hand off		Transitions		Cuts		Putbacks							
1	Powell	BRE	5.0-9.9	51%	0	-0.1	0%	0.1-0.1	100%	0	-0.3	0%	0.4-1.4	29%	0.2-0.6	33%	1.2-1.9	63%	0.5-1.3	38%	0.6-1.2	50%	-	0.5-0.6	83%	0.8-0.8	100%	0.6-1.4	43%				
2	Larsen	MAR	4.8-9.7	49%	-	-	-	0.8-1.3	62%	0.3-0.5	60%	1.3-3.0	43%	0.2-0.4	50%	0.5-1.4	36%	0.1-0.3	33%	0.2-0.2	100%	0.1-0.2	50%	0.3-0.5	60%	0.5-0.7	71%	0.6-0.9	67%				
3	Sidibe	MEL	4.2-7.4	57%	-	-	-	0.4-0.7	57%	1.0-1.8	56%	0.5-1.0	50%	0.1-0.1	100%	0.2-0.9	22%	-	-	0.2-0.2	100%	-	-	0.4-0.4	100%	0.8-1.2	67%	0.6-1.0	60%				
4	Gavrilovic	BRE	3.2-6.6	48%	0	-0.1	0%	0.1-0.1	100%	0	-0.1	0%	0.3-0.8	38%	0.1-0.2	50%	0.6-1.9	32%	0.2-0.4	50%	0.3-0.5	60%	0.1-0.2	50%	0.4-0.6	67%	0.8-0.9	89%	0.3-0.6	50%			
5	Blackwell	LEY	4.4-8.0	55%	-	-	-	0.9-1.7	53%	-	-	1.0-2.0	50%	0.2-0.2	100%	0.1-0.1	100%	0.2-0.5	40%	0.2-0.5	40%	0	-0.1	0%	0.4-0.5	80%	0.9-1.2	75%	0.6-0.9	67%			
6	Soluade	BRE	2.4-5.4	44%	0.7-1.2	58%	-	-	-	-	-	0	-0.1	0%	0.1-0.1	100%	0.7-1.7	41%	0.1-0.4	25%	0.3-0.6	50%	0.1-0.2	50%	0.3-0.6	50%	-	0	-0.1	0%			
7	Murphy	GIP	4.3-9.6	45%	-	-	-	0.1-0.3	33%	0.4-0.6	67%	0.2-0.6	33%	0	-0.1	0%	0.8-3.4	24%	0.8-1.3	62%	0.5-1.0	50%	0.1-0.2	50%	0.9-1.3	69%	0.4-0.5	80%	0.2-0.3	67%			
8	Jawara	GIP	1.7-4.0	43%	-	-	-	0.5-0.7	71%	0.1-0.2	50%	0.1-0.4	25%	-	-	0.2-1.0	20%	0	-0.3	0%	-	-	-	0.2-0.3	67%	0.3-0.5	60%	0.2-0.4	50%				
9	Motos	GIP	2.3-5.8	40%	0.6-0.9	67%	-	-	-	-	-	-	-	0.2-0.6	33%	0.7-2.2	32%	0.1-0.3	33%	0.1-0.2	50%	0.1-0.3	33%	0.3-0.5	60%	0.3-0.5	60%	0.1-0.4	25%				
10	Federico	VAL	3.0-7.4	41%	0	-0.2	0%	-	-	-	-	0	-0.1	0%	0.1-0.4	25%	1.0-2.3	43%	0.3-0.7	43%	0.4-1.1	36%	0.2-0.7	29%	0.5-1.1	45%	0.1-0.1	100%	0.3-0.7	43%			
11	Garcia	CAS	3.7-8.4	44%	0	-0.1	0%	0.4-0.7	57%	0.2-0.5	40%	1.1-2.3	48%	0.1-0.5	20%	0.2-1.5	13%	0.4-0.6	67%	0.3-0.5	60%	0.1-0.1	100%	0.5-0.7	71%	0.2-0.3	67%	0.3-0.5	60%				
12	De Thae	BRE	3.0-7.0	43%	-	-	-	0	-0.4	0%	0	-0.1	0%	0.1-0.1	100%	-	-	0.7-2.4	29%	0	-0.1	0%	0	-0.6	0%	-	-	-	-	-	-		
13	Clare	LLE	5.0-9.5	53%	-	-	-	1.0-1.8	56%	-	-	1.9-4.6	41%	0.1-0.2	50%	0.1-0.2	50%	0.2-0.3	67%	0	-0.1	0%	0.2-0.2	100%	0.1-0.2	50%	0.8-1.2	67%	0.4-0.7	57%			
14	Jasaitis	MAR	3.3-6.8	49%	-	-	-	-	-	0.1-0.3	33%	0.2-0.3	33%	0	-0.1	0%	1.5-3.1	48%	0.3-0.7	43%	0.6-1.4	43%	0	-0.1	0%	0.2-0.4	50%	0.2-0.3	67%	0	-0.1	0%	
15	Arteaga	OB	3.9-7.3	53%	-	-	-	0.5-0.7	71%	0.1-0.1	100%	1.5-3.4	44%	0.1-0.1	100%	0.2-0.7	29%	0	-0.1	0%	0.1-0.3	33%	-	-	0.1-0.1	100%	0.8-1.2	67%	0.5-0.7	71%			
16	Mutic	GIP	0.9-2.2	41%	-	-	-	0	-0.1	0%	0	-0.1	0%	0.1-0.2	50%	-	-	0.3-1.0	30%	0.1-0.3	33%	0	-0.1	0%	-	0.1-0.2	50%	0.1-0.2	50%	0.2-0.3	67%		
17	Zegezen	CAS	4.1-7.3	56%	-	-	-	1.1-1.8	61%	-	-	0.4-1.6	25%	0	-0.1	0%	-	0	-0.3	0%	0.1-0.2	50%	0.1-0.2	50%	0.1-0.1	100%	1.4-1.5	93%	0.7-1.6	44%			
18	Bulic	MEL	2.5-6.4	39%	-	-	-	0	-0.2	0%	0	-0.1	0%	0.7-1.7	41%	0.1-0.1	100%	0.5-1.4	36%	0.1-0.6	17%	0	-0.2	0%	-	0.4-0.8	50%	0.4-0.8	50%	0.1-0.3	33%		
19	Rubio	GRA	3.3-7.1	46%	-	-	-	0.2-0.4	50%	0.2-0.3	67%	1.0-2.5	40%	0.1-0.2	50%	0.5-1.0	50%	0.1-0.5	20%	0.2-0.4	50%	0	-0.2	0%	0.3-0.4	75%	0.5-0.6	83%	0.2-0.3	67%			
20	Bilbao	CAC	2.8-5.0	56%	-	-	-	0.7-1.1	64%	0	-0.1	0%	0.3-0.6	50%	0	-0.1	0%	0.1-0.2	50%	0.1-0.3	33%	-	0	-0.1	0%	0.3-0.4	75%	0.5-0.7	71%	0.7-1.1	64%		
21	Hamilton	LEY	3.9-9.4	41%	0.1-0.1	100%	-	-	-	0.1-0.1	100%	1.0-1.8	56%	0.4-1.5	27%	0.9-2.4	38%	0.2-0.7	29%	0.2-1.1	18%	0	-0.1	0%	0.6-0.7	86%	0.1-0.4	25%	0.2-0.3	67%			
22	Belemene	MEL	1.4-3.0	47%	0.1-0.1	100%	-	-	-	-	-	0	-0.1	0%	0.1-0.3	33%	0.5-1.3	38%	0.3-0.4	75%	0.1-0.4	25%	-	0.1-0.3	33%	0.1-0.1	100%	0	-0.1	0%			
23	Stutz	LLE	5.0-9.4	53%	-	-	-	0.5-0.5	100%	0.5-1.1	45%	0.7-1.4	50%	0	-0.2	0%	0.7-1.7	41%	0.1-0.5	20%	0.2-0.4	50%	-	0.3-0.5	60%	1.2-1.5	80%	0.9-1.6	56%				
24	Sima	OUR	3.3-5.9	56%	-	-	-	0.7-1.4	50%	-	-	0.4-1.3	31%	-	-	0.4-0.4	100%	0	-0.1	0%	-	-	-	0.1-0.1	100%	1.1-1.6	69%	0.4-0.9	44%				
25	Kuiper	CAC	3.4-6.9	49%	-	-	-	0.3-0.5	60%	0.2-0.4	50%	0.8-1.3	62%	0.1-0.2	50%	0.9-2.3	39%	0.2-0.7	29%	0.1-0.2	50%	-	-	0.2-0.4	50%	0.4-0.4	100%	0.3-0.4	75%				
26	Skara	PEN	4.8-10.5	46%	-	-	-	0.4-0.8	50%	0.4-0.8	50%	0.4-0.8	50%	0.4-0.5	80%	0.5-1.9	26%	0.5-1.2	42%	0.3-0.9	33%	0	-0.1	0%	0.8-1.1	73%	0.6-1.3	46%	0.5-1.0	50%			
27	Nuutinen	OB	3.7-7.1	52%	0.1-0.1	100%	-	-	-	0.1-0.1	100%	0.4-0.6	67%	0.2-0.4	50%	1.0-2.5	40%	0.3-0.5	60%	0.5-0.9	56%	0.1-0.1	100%	0.4-0.8	50%	0.3-0.4	75%	0.1-0.2	50%				
28	Reyes	OB	4.2-10.4	40%	0.6-1.0	60%	-	-	-	-	-	0	-0.1	0%	0.2-0.3	67%	0.6-2.1	29%	0.2-0.7	29%	1.2-3.2	38%	0.2-1.2	17%	0.7-1.2	58%	0.2-0.2	100%	0.3-0.3	100%			
29	Blazquez Lopez	OB	1.2-2.5	48%	-	-	-	0.1-0.2	50%	0.1-0.1	100%	0	-0.1	0%	-	-	0.1-0.7	14%	0.1-0.1	100%	0.1-0.1	100%	0.1-0.1	100%	0.1-0.3	33%	0.6-0.9	67%	-	-			
30	Bader	MAR	3.3-8.0	41%	0.4-1.0	40%	-	-	-	-	-	0	-0.1	0%	0	-0.2	0%	0.8-2.1	38%	0.3-0.5	60%	1.0-2.3	43%	0.2-0.5	40%	0.4-1.0	40%	0	-0.2	0%	0	-0.1	0%
31	Nogues	BRE	0.8-2.8	29%	-	-	-	-	-	-	-	0.1-0.2	50%	-	-	0.2-1.1	18%	0.3-0.4	75%	0.1-0.2	50%	0.1-0.3	33%	0.1-0.3	33%	0	-0.2	0%	0	-0.1	0%		
32	Jakstas	OB	3.6-8.0	45%	-	-	-	0.4-0.6	67%	0.4-0.5	80%	0.9-1.9	47%	0.1-0.3	33%	0.6-1.9	32%	0.4-0.7	57%	0.3-0.6	50%	0	-0.2	0%	0.2-0.4	50%	0.4-0.8	50%	0.1-0.2	50%			
33	Martinez	OUR	2.9-7.2	40%	0	-0.2	0%	-	-	0	-0.1	0%	-	0	-0.2	0%	1.1-2.8	39%	0.3-0.5	60%	0.8-2.2	36%	0	-0.1	0%	0.2-0.3	67%	0.2-0.3	67%	0.1-0.3	33%		
34	Lindqvist	MP	2.2-5.8	38%	0	-0.1	0%	0	-0.1	0%	0.1-0.2	50%	0.1-0.2	50%	0.1-0.1	100%	1.0-2.5	40%	0.4-0.8	50%	0.1-0.6	17%	0	-0.1	0%	0.3-0.6	50%	0	-0.2	0%	0.1-0.1	100%	
35	Pardina	GRA	2.4-5.8	41%	0.1-0.3	33%	-	-	-	-	-	0	-0.2	0%	0	-0.1	0%	1.0-2.1	48%	0.2-0.8	25%	0.2-0.6	33%	0.1-0.2	50%	0.1-0.3	33%	0.3-0.5	60%	0.3-0.5	60%		
36	Adekoye	VAL	1.4-4.5	31%	-	-	-	0	-0.1	0%	0.3-0.7	43%	0.3-0.6	50%	0.1-0.3	33%	0.3-1.2	25%	0.1-0.7	14%	0	-0.2	0%	-	0	-0.1	0%	0.2-0.4	50%	0.1-0.2	50%		
37	Schaftenaar	RC	4.0-8.8	45%	-	-	-	0.2-0.2	100%	0.5-0.9	56%	0.8-1.5	53%	0.1-0.3	33%	1.3-3.7	35%	0.3-0.5	60%	0.2-0.3	67%	0.2-0.3	67%	0.3-0.4	75%	0.1-0.3	33%	0.1-0.2	50%				
38	Barac	MP	2.2-6.3	35%	-	-	-	0	-0.2	0%	-	-	-	0.3-0.9	33%	-	-	0.5-2.5	20%	0.1-0.4	25%	0.1-0.3	33%	0	-0.1	0%	0.3-0.5	60%	0.7-1.1	64%	0.1-0.3	33%	
39	Berg Pedersen	CAC	1.3-3.3	39%	0	-0.1	0%	-	-	0	-0.1	0%	0.1-0.3	33%	-	-	0.2-1.1	18%	0.1-0.2	50%	0	-0.1	0%	0	-0.1	0%	0.2-0.2	100%	0.3-0.6	50%	0.4-0.6	67%	
40	Marti	LLE	2.3-5.8	40%	-	-	-	-	-	0.3-0.5	60%	0.6-1.8	33%	0	-0.2	0%	0.4-1.3	31%	0.1-0.1	100%	0.1-0.2	50%	0.1-0.1	100%	0.5-0.9	56%	0.2-0.3	67%	0.1-0.5	20%			
41	Jankovic	CAC	0.7-2.6	27%	-	-	-	0	-0.3	0%	-	-	-	-	-	-	0.3-1.6	19%	0.1-0.3	33%	0	-0.1	0%	-	0.1-0.1	100%	-	-	-	-			
42	Nikolic	CAC	2.3-6.0	38%	0.3-1.3	23%	-	-	-	-	-	0.1-0.2	50%	0.1-0.5	20%	0.4-1.3	31%	0.4-0.9	44%	0.3-0.4	75%	0.1-0.2	50%	0.3-0.7	43%	0.1-0.3	33%	0.3-0.3	100%				
43	Onwenu	ALI	2.8-6.3	44%	0	-0.1	0%	-	-	0.2-0.8	25%	0.2-0.4	50%	0	-0.2	0%	0.8-1.9	42%	0.3-0.5	60%	0	-0.1	0%	0	-0.2	0%	0.6-0.9	67%	0.3-0.4	75%	0.3-0.6	50%	
44	Tomas	MP	1.5-3.6	42%	0	-0.2	0%	-	-	0	-0.1	0%	-	0	-0.1	0%	0.6-1.5	40%	0.2-0.3	67%	0.2-0.7	29%	-	-	0.2-0.3	67%	0.2-0.2	100%	-	-			
45	Grytsak	PEN	0.4-2.0	20%	-	-	-	0	-0.2	0%	-	0	-0.2	0%	-	-	0.1-0.5	20%	0.1-0.2	50%	-	-	-	-	0.2-0.4	50%	0	-0.3	0%	0.2-0.3	67%		
46	Tshikaya	OUR	1.6-3.5	46%	0	-0.1	0%	-	-	-	-	0.1-0.1	100%	0	-0.1	0%	0.6-1.9	32%	0	-0.1	0%	0.1-0.1	100%	0.1-0.1	100%	0.2-0.2	100%	0.5-0.6	83%	0.2-0.5	40%		
47</																																	



Forwards

		Field goals		Pick'n'rolls Handler		Pick'n'rolls Roller		Pick'n'pops		Post ups		Isolations		Catch and shoots		Catch and drives		Screen off		Hand off		Transitions		Cuts		Putbacks		
48	Jimenez	RC	0.7-1.3	54%	-	-	-	-	-	-	-	-	-	0.2-0.5	40%	0.2-0.5	40%	-	-	-	-	-	0.2-0.2	100%	0.2-0.2	100%		
49	Seibring	RC	1.6-4.1	39%	-	0 -0.1	0%	0 -0.3	0%	0.1-0.2	50%	-	-	1.4-2.6	54%	0 -0.2	0%	0 -0.1	0%	0.1-0.1	100%	0.1-0.3	33%	-	0.1-0.3	33%		
50	Witlinski	MEL	0.9-3.2	28%	-	0.1-0.3	33%	0 -0.4	0%	0.2-0.3	67%	-	-	0.1-0.6	17%	0 -0.2	0%	0.1-0.4	25%	-	-	0 -0.2	0%	0.2-0.6	33%	0.2-0.2	100%	
51	De Blas	PEN	0.6-1.7	35%	0.1-0.1	100%	-	-	-	-	-	-	-	0.3-0.9	33%	0 -0.2	0%	0 -0.1	0%	-	-	0.1-0.3	33%	-	-	-		
52	Corvalan	RC	2.0-5.9	34%	0.7-2.3	30%	-	-	-	-	-	0.3-0.9	33%	0.2-0.9	22%	0.2-0.4	50%	0.1-0.2	50%	0 -0.2	0%	0.2-0.7	29%	0.1-0.2	50%	0.1-0.2	50%	
53	Gonzalez	ALI	0.1-0.8	13%	0 -0.5	0%	-	-	-	-	-	0 -0.2	0%	-	-	-	-	0 -0.1	0%	-	-	0.1-0.1	100%	-	-	-		
54	Gilchrist	VAL	1.0-3.0	33%	-	0.5-0.5	100%	-	-	-	-	-	-	0 -0.5	0%	0 -0.5	0%	0 -0.5	0%	-	-	-	0 -0.5	0%	-	-		
55	Urdiain	PEN	1.2-2.8	43%	-	-	-	-	-	-	-	-	-	0.4-1.2	33%	0 -0.2	0%	0.4-0.8	50%	-	-	0.4-0.6	67%	-	-	-		
56	Holmes	RC	1.0-3.6	28%	-	-	0 -0.4	0%	0.4-1.0	40%	-	-	-	0.6-1.2	50%	0 -0.2	0%	0 -0.4	0%	-	-	-	0 -0.2	0%	0 -0.2	0%		
57	Diaz	MAR	3.8-10.2	37%	0 -0.1	0%	0.1-0.1	100%	0.3-0.8	38%	0.5-1.0	50%	0 -0.1	0%	0.4-2.1	19%	0.3-1.2	25%	0.5-1.3	38%	0 -0.1	0%	0.7-1.4	50%	0.3-0.5	60%	0.5-1.2	42%
58	Gilling	ALM	2.7-6.7	40%	0 -0.1	0%	-	0.2-0.4	50%	0.2-0.5	40%	0 -0.4	0%	0.7-2.0	35%	0.2-0.7	29%	0.7-1.4	50%	0.1-0.4	25%	0.2-0.3	67%	0.2-0.4	50%	0 -0.1	0%	
59	Cvetinovic	ALM	5.9-12.2	48%	-	0.1-0.4	25%	0.2-0.5	40%	0.6-1.4	43%	0.3-0.8	38%	1.0-2.7	37%	0.7-1.5	47%	0.6-1.1	55%	0.1-0.2	50%	0.9-1.3	69%	1.1-1.8	61%	0.4-0.6	67%	
60	Badmus	MAR	4.1-9.8	42%	0.2-0.4	50%	0 -0.1	0%	-	0.4-0.8	50%	0.2-0.5	40%	1.0-3.1	32%	0.5-0.9	56%	0.2-1.1	18%	0.1-0.2	50%	0.9-1.5	60%	0.2-0.4	50%	0.3-0.7	43%	
61	Seoane	MAR	0.6-1.4	43%	-	-	-	-	-	-	-	-	-	0.3-0.7	43%	-	-	0 -0.1	0%	-	-	0.1-0.2	50%	-	-	0 -0.1	0%	
62	Quinn	MAR	2.0-2.9	69%	0.1-0.1	100%	0.9-1.3	69%	-	0.1-0.1	100%	-	-	-	-	-	-	-	-	0.1-0.3	33%	-	0.1-0.3	33%	0.6-0.7	86%		
63	Ballespin	MEL	-	-	-	-	-	-	-	-	-	-	-	-	-	-	-	-	-	-	-	-	-	-	-	-		
64	Carroll	MAR	0.7-3.3	21%	-	0 -0.3	0%	0.7-1.3	54%	0 -0.3	0%	-	-	0 -1.0	0%	-	-	-	-	-	-	0 -0.3	0%	-	-	-		



Guards

		Field goals		Pick'n'rolls Handler		Pick'n'rolls Roller		Pick'n'pops		Post ups		Isolations		Catch and shoots		Catch and drives		Screen off		Hand off		Transitions		Cuts		Putbacks						
1	Timmer	GIP	5.4-10.8	50%	1.3-2.9	45%	-	-	-	-	0.4-1.4	29%	1.4-2.4	58%	0.5-0.9	56%	0.5-1.0	50%	0.3-0.4	75%	0.1-0.5	20%	0.4-0.4	100%	0	-0.1	0%					
2	Agada	MEL	5.7-13.0	44%	1.4-4.1	34%	-	-	0.3-0.7	43%	0.7-1.4	50%	0.4-1.7	24%	0.4-0.9	44%	0.5-1.0	50%	0.2-0.4	50%	1.4-2.0	70%	0.1-0.3	33%	0.2-0.5	40%						
3	Dee	GIP	5.4-12.6	43%	1.0-2.5	40%	-	-	-	-	0.5-1.3	38%	1.1-3.0	37%	0.5-1.1	45%	0.9-2.0	45%	0.5-0.8	63%	0.5-1.0	50%	0.3-0.5	60%	0.1-0.2	50%						
4	Kinoshita	CAS	0.4-1.0	40%	0.3-0.5	60%	-	-	-	-	0	-0.1	0%	0	-0.1	0%	0	-0.1	0%	-	-	-	0.1-0.1	100%	-	-						
5	Diaz	BRE	2.9-6.3	46%	1.2-2.7	44%	-	-	-	-	0.3-0.6	50%	0.3-0.7	43%	0.2-0.5	40%	0	-0.2	0%	0.1-0.4	25%	0.6-0.9	67%	0	-0.1	0%	-					
6	Sollazzo	GIP	3.9-9.3	42%	0.8-1.8	44%	-	0	-0.1	0%	0.4-1.0	40%	0.5-1.0	50%	0.6-2.0	30%	0.5-1.2	42%	0.1-0.2	50%	0.1-0.4	25%	0.5-1.0	50%	0.2-0.3	67%	0.1-0.2	50%				
7	Alonso	OB	6.3-15.3	41%	3.0-5.7	53%	-	-	-	-	0	-0.3	0%	1.3-3.7	35%	0	-1.3	0%	0.3-1.3	23%	0.7-1.0	70%	0.3-1.3	23%	0.3-0.3	100%	0.3-0.3	100%				
8	Pena	BRE	4.3-10.0	43%	0.4-1.1	36%	-	-	0.3-0.5	60%	0.3-0.4	75%	1.0-2.4	42%	0.1-0.6	17%	1.0-2.2	45%	0.2-0.3	67%	0.9-2.0	45%	0.1-0.2	50%	0.2-0.5	40%						
9	Matulionis	MEL	4.0-9.9	40%	0.3-0.8	38%	-	-	0.1-0.4	25%	0	-0.1	0%	1.0-2.0	50%	0	-0.5	0%	1.2-3.2	38%	0.2-0.3	67%	0.8-1.5	53%	0.1-0.2	50%	0.2-0.7	29%				
10	Bartley IV	VAL	5.5-13.6	40%	0.4-1.1	36%	-	-	0	-0.2	0%	0.5-1.5	33%	1.0-2.9	34%	0.4-0.9	44%	1.4-3.8	37%	0.1-0.5	20%	1.0-1.6	63%	0.3-0.6	50%	0.1-0.2	50%					
11	Ahonen	BRE	3.1-6.8	46%	0.8-1.5	53%	-	-	-	-	0.2-0.3	67%	0.7-1.7	41%	0.1-0.2	50%	0.7-1.4	50%	0.1-0.4	25%	0.6-0.9	67%	-	-	0	-0.2	0%					
12	Arco	BRE	3.4-7.6	45%	0.1-0.4	25%	-	-	-	-	0	-0.2	0%	0.7-2.0	35%	0.6-0.9	67%	0.9-2.4	38%	0.3-0.7	43%	0.6-0.8	75%	0.2-0.3	67%	-	-					
13	Niang	MAR	3.9-10.0	39%	1.7-3.8	45%	-	-	-	-	0.6-1.6	38%	0.4-1.2	33%	0	-0.5	0%	0	-0.3	0%	0.1-0.7	14%	1.1-1.7	65%	0	-0.1	0%	0	-0.1	0%		
14	Uriz	CAC	3.8-9.6	40%	1.1-4.6	24%	-	-	0.1-0.1	100%	0.3-0.7	43%	1.0-1.5	67%	0.1-0.4	25%	0	-0.1	100%	0.8-1.3	62%	0.3-0.6	50%	0.1-0.1	100%	0.1-0.1	100%					
15	Leimanis	VAL	3.4-8.9	38%	1.7-3.8	45%	-	0	-0.1	0%	0	-0.1	0%	0.5-1.4	36%	0.4-1.5	27%	0.1-0.5	20%	0.1-0.3	33%	0.3-0.7	43%	0.1-0.5	20%	-	0	-0.1	0%			
16	Brown	BRE	3.0-6.5	46%	1.0-2.5	40%	-	-	-	-	-	-	-	-	0.5-0.5	100%	1.0-2.0	50%	-	-	-	-	-	-	-	1.0-0.5	200%					
17	Wintering	PEN	4.4-9.6	46%	1.4-2.9	48%	-	-	0	-0.1	0%	0.6-2.2	27%	0.3-0.6	50%	0.4-0.7	57%	0.2-0.3	67%	0.3-0.9	33%	1.3-1.6	81%	0	-0.1	0%	0	-0.1	0%			
18	Peciukevicius	LEY	3.2-7.1	45%	1.0-2.2	45%	-	-	0.1-0.2	50%	0.2-0.5	40%	0.2-1.1	18%	0.3-0.5	60%	0.1-0.2	50%	0.2-0.4	50%	0.6-0.7	86%	0.4-0.7	57%	0.1-0.3	33%						
19	Joseph	CAC	3.9-8.0	49%	-	-	0.6-1.0	60%	-	-	1.6-3.7	43%	0	-0.1	0%	0.1-0.1	100%	0.1-0.2	50%	0.1-0.1	100%	0	-0.1	0%	0.3-0.4	75%	0.6-1.2	50%	0.6-1.0	60%		
20	Urtasun Uriz	OUR	5.5-12.5	44%	1.5-5.5	27%	-	-	-	-	0.5-1.0	50%	0	-0.5	0%	1.0-1.0	100%	2.0-2.5	80%	0	-0.5	0%	0.5-1.5	33%	-	-	-	-				
21	Oroz	GIP	1.3-3.3	39%	0.3-0.4	75%	-	-	-	-	0	-0.1	0%	0.2-1.1	18%	0.1-0.3	33%	0	-0.1	0%	0	-0.1	0%	0.3-0.6	50%	0.2-0.4	50%	0.1-0.2	50%			
22	Misters	MEL	3.5-8.5	41%	0.6-1.7	35%	-	0.1-0.1	100%	0	-0.1	0%	0	-0.1	0%	1.0-2.3	43%	0.2-0.7	29%	1.0-2.1	48%	0	-0.1	0%	0.4-1.0	40%	0	-0.1	0%	0	-0.2	0%
23	Kamba	LEY	3.8-8.0	48%	0.3-1.2	25%	-	-	0	-0.4	0%	0.3-0.8	38%	1.0-2.3	43%	0.3-0.6	50%	0.3-0.7	43%	0.1-0.3	33%	0.9-1.3	69%	0.2-0.2	100%	0.3-0.4	75%					
24	Xavier	LEY	3.8-10.9	35%	1.0-3.2	31%	-	-	-	-	0.2-0.5	40%	0.5-1.7	29%	0.3-0.6	50%	0.8-2.3	35%	0.3-0.5	60%	0.5-1.4	36%	-	-	0.2-0.2	100%						
25	Gonzalez	MP	2.0-3.5	57%	0.1-0.1	100%	0.8-1.3	62%	-	-	0.1-0.3	33%	-	-	-	-	0	-0.1	0%	0.1-0.1	100%	0.1-0.1	100%	0.4-0.8	50%	0.5-0.6	83%					
26	Bivia	MP	2.8-7.1	39%	0.8-1.8	44%	-	-	-	-	0	-0.3	0%	0.4-1.5	27%	0.3-0.4	75%	0.6-1.7	35%	0.2-0.3	67%	0.3-0.7	43%	0.1-0.1	100%	-	-					
27	Lofberg	MP	4.0-8.4	48%	0.5-1.1	45%	-	-	0.3-0.6	50%	0.1-0.2	50%	0.6-1.5	40%	0.3-0.5	60%	0.8-2.0	40%	0.1-0.3	33%	0.8-1.1	73%	0.2-0.4	50%	0.1-0.1	100%	0.1-0.3	33%				
28	Grimau	MAR	2.4-5.1	47%	0.4-0.8	50%	-	-	0.2-0.4	50%	0.1-0.2	50%	0.3-1.3	23%	0.2-0.6	33%	0.2-0.3	67%	-	-	0.4-0.5	80%	0.5-0.6	83%	0.2-0.2	100%						
29	Rodriguez	MAR	2.8-6.5	43%	1.5-3.4	44%	-	-	-	-	0.2-0.4	50%	0.5-1.2	42%	0.1-0.4	25%	-	-	0.1-0.5	20%	0.2-0.3	67%	0.1-0.1	100%	-	-						
30	Jorgensen	MAR	3.1-7.4	42%	0.7-1.6	44%	-	-	-	-	0.3-0.5	60%	0.7-2.2	32%	0.3-0.6	50%	0.3-0.8	38%	0.2-0.3	67%	0.5-1.2	42%	-	-	0.1-0.1	100%						
31	Luke	MEL	0.7-2.3	30%	0.1-0.8	13%	-	-	-	-	0.1-0.1	100%	0.3-0.7	43%	0.1-0.3	33%	-	-	-	-	0.1-0.2	50%	-	-	-	-						
32	Hernandez	MP	2.6-6.5	40%	1.5-3.6	42%	-	-	-	-	0.1-0.5	20%	0.1-0.5	20%	0.4-0.6	67%	0.1-0.1	100%	0.1-0.3	33%	0.2-0.4	50%	0	-0.1	0%	0	-0.1	0%				
33	Llompart Uson	ALI	2.4-6.0	40%	1.3-3.6	36%	-	-	-	-	0.1-0.3	33%	0.1-0.4	25%	0.1-0.3	33%	0.1-0.3	33%	0.3-0.4	75%	0.1-0.5	20%	-	-	0.1-0.1	100%						
34	Coggins	OB	3.6-10.1	36%	0.9-2.7	33%	-	-	-	-	0.3-1.0	30%	0.4-2.1	19%	0.3-0.9	33%	0.4-0.7	57%	0.4-1.3	31%	0.6-0.9	67%	-	-	-	-						
35	Alvarado	OUR	2.2-5.7	39%	1.1-2.8	39%	-	-	-	-	0.4-0.6	67%	0.4-1.3	31%	0.1-0.2	50%	-	-	-	-	0.2-0.7	29%	-	-	-	-						
36	Cuevas Simarro	MEL	1.6-4.4	36%	0.6-1.7	35%	-	-	-	-	-	-	0.4-1.2	33%	0.3-0.4	75%	0	-0.3	0%	0.1-0.2	50%	0.1-0.4	25%	-	-	-	-					
37	Wade-Chatman	CAS	4.1-10.3	40%	1.7-4.0	43%	-	-	-	-	0.6-1.3	46%	0.7-2.0	35%	0.1-0.4	25%	0.1-0.5	20%	0.2-0.6	33%	0.6-1.1	55%	0.2-0.2	100%	-	-						
38	Vecvagars	MAR	2.8-6.4	44%	0.8-1.7	47%	-	0	-0.1	0%	-	-	0.1-0.1	100%	0.8-2.3	35%	0.2-0.3	67%	0.3-0.6	50%	0.1-0.3	33%	0.2-0.4	50%	0.2-0.3	67%	0.1-0.1	100%				
39	Olumuyiwa	MP	1.7-2.7	63%	-	-	0.7-0.9	78%	-	-	0	-0.2	0%	-	-	0.1-0.2	50%	-	-	0.1-0.1	100%	-	-	0.2-0.3	67%	0.2-0.3	67%	0.2-0.4	50%			
40	Djukanovic	CAS	4.0-8.8	45%	1.2-2.1	57%	-	-	-	-	0.3-0.6	50%	0.5-1.4	36%	0.3-0.5	60%	0.4-1.3	31%	0.6-1.4	43%	0.5-1.0	50%	0.2-0.3	67%	0.1-0.1	100%						
41	Bertone	MP	2.3-5.6	41%	0.3-1.0	30%	-	-	-	-	0.1-0.1	100%	0.5-1.2	42%	0.3-0.8	38%	0.2-0.8	25%	0.1-0.2	50%	0.5-0.8	63%	0.1-0.2	50%	0.1-0.3	33%						
42	Carter III	PEN	4.3-10.6	41%	1.2-2.8	43%	-	-	0	-0.1	0%	0.4-0.8	50%	0.6-2.0	30%	0.3-0.7	43%	0.7-2.0	35%	0.3-0.5	60%	0.6-1.2	50%	0.1-0.3	33%	0	-0.2	0%				
43	Kullamae	RC	4.6-10.0	46%	0.6-1.6	38%	-	0.1-0.1	100%	0.4-0.5	80%	0.7-1.5	47%	0.7-2.1	33%	0.1-0.3	33%	0.2-0.4	50%	0.1-0.4	25%	0.8-1.6	50%	0.5-0.8	63%	0.3-0.4	75%					
44	Kapelan	GRA	4.0-10.3	39%	1.0-2.6	38%	-	-	-	-	0.3-0.9	33%	0.5-1.7	29%	0.5-0.8	63%	1.1-2.8	39%	0.2-0.7	29%	0.3-0.6	50%	-	-	0.1-0.1	100%						
45	Ventura	CAC	1.8-4.6	39%	0.3-0.6	50%	-	-	0	-0.1	0%	0.1-0.3	33%	0.8-2.0	40%	0	-0.2	0%	0	-0.2	0%	0.1-0.5	20%	0.3-0.5	60%	-	0	-0.1	0%			
46	Lundqvist	RC	3.2-6.7	48%	0.7-1.5	47%	-	-	-	-	0.6-1.2	50%	0.4-1.1	36%	0.6-1.1	55%	0	-0.1	0%	0.4-0.7	57%	0.3-0.4	75%	0.1-0.2	50%							
47	Zubizarreta	CAC	2.1-6.0	35%	0.7-2.2	32%	-	-	-	-	0.1-0.6	17%	0.3-0.7	43%	0.2-0.6	33%	0.2-0.4	50%	0.2-0.5	40%	0.4-0.9	44%	0	-0.1	0%	0	-0.1	0%				

 Guards

		Field goals	Pick'n'rolls Handler	Pick'n'rolls Roller	Pick'n'pops	Post ups	Isolations	Catch and shoots	Catch and drives	Screen off	Hand off	Transitions	Cuts	Putbacks
48	Wright	OB 1.6-4.0 40%	0 -0.1 0%	0.4-1.1 36%	0-0.1 0%	0.5-1.5 33%	0.1-0.1 100%	-	0 -0.1 0%	0.1-0.1 100%	-	0.1-0.1 100%	0.2-0.5 40%	0.3-0.4 75%
49	Geks	OB 3.3-8.4 39%	0.1-0.5 20%	-	-	-	0 -0.1 0%	1.4-3.3 42%	0.1-0.7 14%	0.9-2.1 43%	0.5-1.0 50%	0.2-0.6 33%	-	0 -0.1 0%
50	Fahner Catala	CAS 2.3-5.9 39%	0.8-2.0 40%	-	-	-	0.2-0.4 50%	0.5-1.2 42%	0 -0.5 0%	0 -0.2 0%	0.2-0.5 40%	0.4-0.8 50%	0.1-0.2 50%	-
51	Rodriguez	GRA 2.3-6.3 37%	0 -0.4 0%	-	0-0.1 0%	-	0 -0.1 0%	0.8-2.0 40%	0.2-0.4 50%	0.9-2.2 41%	0.1-0.2 50%	0.3-0.7 43%	0 -0.1 0%	0.2-0.2 100%
52	Exposito	VAL 0.9-1.9 47%	0 -0.1 0%	-	-	-	0.1-0.3 33%	0.2-0.5 40%	0.3-0.4 75%	0.1-0.2 50%	0.1-0.1 100%	0.2-0.3 67%	0.1-0.1 100%	-
53	Cobos	GRA 1.3-4.1 32%	0.4-1.2 33%	-	-	0 -0.1 0%	0.1-0.1 100%	0.4-1.2 33%	0.1-0.5 20%	0.1-0.2 50%	0.1-0.2 50%	0.1-0.1 100%	0.1-0.1 100%	0.1-0.2 50%
54	Mackenzie	VAL 2.2-5.6 39%	0.2-0.4 50%	-	-	-	0.2-0.4 50%	0.6-1.8 33%	0.3-0.6 50%	0.5-1.3 38%	0.1-0.3 33%	0.3-0.5 60%	0.1-0.1 100%	0 -0.1 0%
55	Rakocevic	CAC 3.8-9.5 40%	1.0-2.2 45%	-	-	0.1-0.1 100%	0.6-1.2 50%	0.4-1.6 25%	0.6-1.1 55%	0.7-1.7 41%	0.1-0.3 33%	0.3-0.6 50%	0.1-0.2 50%	0.1-0.2 50%
56	Chapela	LLE 3.0-8.9 34%	1.0-3.5 29%	-	-	-	0.3-0.8 38%	0.7-2.0 35%	0.2-0.8 25%	0.2-0.4 50%	0 -0.3 0%	0.4-0.8 50%	0 -0.1 0%	0.1-0.1 100%
57	Cardenas Maldonado	PEN 1.8-4.0 45%	0.7-1.7 41%	-	-	-	0.1-0.3 33%	0.4-0.9 44%	0.1-0.2 50%	0.1-0.1 100%	0.1-0.2 50%	0.2-0.3 67%	-	0 -0.1 0%
58	Santa Ana	LLE 3.1-6.9 45%	0.8-1.6 50%	-	-	0.1-0.1 100%	0.2-0.4 50%	0.7-1.8 39%	0.2-0.3 67%	0.3-1.0 30%	0.1-0.2 50%	0.5-1.2 42%	-	0.1-0.2 50%
59	Sanz	OB 0.9-3.1 29%	0.4-0.8 50%	-	-	-	0 -0.2 0%	0.2-1.2 17%	0.1-0.1 100%	-	-	0.2-0.6 33%	-	0 -0.1 0%
60	Llorente Paz	OB 2.4-8.6 28%	1.2-4.1 29%	-	-	-	0.2-0.8 25%	0.5-1.5 33%	0.1-0.6 17%	0.1-0.4 25%	0.1-0.5 20%	0.1-0.4 25%	0 -0.1 0%	-
61	Corts Valdivia	GRA 1.5-4.1 37%	0.8-2.1 38%	-	-	-	0.2-0.4 50%	0.2-0.9 22%	0.1-0.1 100%	0.1-0.1 100%	0.1-0.2 50%	0.1-0.2 50%	0.1-0.1 100%	0.1-0.1 100%
62	Busquets	ALI 2.3-5.9 39%	0 -0.1 0%	-	-	0.1-0.2 50%	0.1-0.3 33%	0.6-2.1 29%	0.1-0.3 33%	0.2-0.4 50%	0.1-0.4 25%	0.9-1.6 56%	0.2-0.2 100%	0.1-0.3 33%
63	Perez	GRA 1.6-4.8 33%	0.6-1.8 33%	-	-	-	0.1-0.3 33%	0.5-0.9 56%	0.1-0.4 25%	0.1-0.1 100%	0.1-0.4 25%	0.2-0.5 40%	-	0.1-0.2 50%
64	Dedovic	PEN 2.4-5.5 44%	0.3-0.4 75%	-	-	-	0 -0.2 0%	0.8-1.7 47%	0 -0.3 0%	0.3-1.2 25%	0.1-0.4 25%	0.5-0.9 56%	0.1-0.2 50%	0.1-0.1 100%
65	Figuera Lopez	OUR 1.4-3.9 36%	0.9-2.4 38%	-	-	-	0 -0.2 0%	0.2-0.5 40%	0.1-0.2 50%	0 -0.1 0%	0 -0.1 0%	0.2-0.4 50%	-	-
66	Maiza	LEY 2.0-6.3 32%	1.1-2.8 39%	-	-	-	0.2-0.5 40%	0.3-1.6 19%	0.2-0.3 67%	-	0 -0.1 0%	0.2-0.6 33%	-	-
67	Pluta	OUR 1.4-4.1 34%	0.4-1.2 33%	-	-	0 -0.1 0%	0.2-0.3 67%	0.5-1.4 36%	0.1-0.1 100%	0.1-0.4 25%	0 -0.1 0%	0.2-0.6 33%	-	0.1-0.1 100%
68	Thiam	ALI 1.2-3.4 35%	0 -0.1 0%	-	0-0.1 0%	0 -0.3 0%	-	0.5-1.5 33%	0 -0.1 0%	0 -0.1 0%	-	0.2-0.5 40%	0.2-0.4 50%	0.2-0.3 67%
69	Martinez Pardo	LEY 0.7-1.7 41%	0.1-0.2 50%	-	-	0 -0.1 0%	0.1-0.1 100%	0.2-0.4 50%	0 -0.2 0%	0 -0.2 0%	-	0.2-0.3 67%	0.1-0.2 50%	0.1-0.1 100%
70	Garcia	CAS 0.8-4.3 19%	0 -0.8 0%	-	0-0.3 0%	0 -0.3 0%	-	0.5-1.8 28%	0 -0.3 0%	-	0 -0.3 0%	-	-	0.3-0.5 60%
71	Sans Valls	LLE 1.7-5.6 30%	0.5-1.9 26%	-	-	0 -0.1 0%	0.2-0.4 50%	0.4-1.3 31%	0.1-0.3 33%	0 -0.4 0%	0.1-0.3 33%	0.3-0.6 50%	0.1-0.1 100%	-
72	Martin	RC 2.6-7.7 34%	0.8-2.5 32%	-	-	-	0.3-0.8 38%	0.7-2.0 35%	0.2-0.6 33%	0 -0.2 0%	0.1-0.2 50%	0.5-1.1 45%	0.1-0.1 100%	-
73	Martinez De La Orden	RC 3.4-7.8 44%	0.2-0.5 40%	-	0-0.1 0%	0.1-0.4 25%	0.2-0.3 67%	0.7-2.4 29%	0.3-0.7 43%	0.3-0.8 38%	0.1-0.1 100%	0.5-0.9 56%	0.6-0.8 75%	0.4-0.6 67%
74	Olafsson	OB 1.3-4.0 33%	0 -0.3 0%	-	-	-	0.1-0.1 100%	0.4-1.7 24%	0.3-0.6 50%	0 -0.3 0%	-	0.3-0.9 33%	-	-
75	Tamayo	PEN 1.4-4.5 31%	0.3-0.7 43%	-	-	-	0.1-0.3 33%	0.5-1.7 29%	0.1-0.4 25%	0.1-0.5 20%	0.1-0.3 33%	0.3-0.5 60%	-	-
76	Llorca	LEY 0 -1.7 0%	0 -1.0 0%	-	-	-	-	0 -0.7 0%	-	-	-	-	-	-
77	Carey	LLE 0.7-4.4 16%	0.3-1.4 21%	-	-	-	0 -0.1 0%	0 -0.7 0%	0 -0.7 0%	-	0 -0.1 0%	0.1-0.7 14%	-	0.3-0.6 50%
78	Chacon	CAC 0 -1.0 0%	-	-	-	-	-	-	0 -1.0 0%	-	-	-	-	-
79	Lobo	RC 1.7-4.9 35%	0.6-2.1 29%	-	-	-	0.2-0.4 50%	0.3-0.8 38%	0.1-0.3 33%	0.2-0.4 50%	0.1-0.3 33%	0.3-0.6 50%	-	-
80	Riley	GRA 1.3-4.3 30%	0.3-1.3 23%	-	-	-	-	0 -1.3 0%	0 -0.5 0%	-	0.3-0.3 100%	0.5-0.8 63%	0.3-0.3 100%	-
81	Huertas	ALM 1.5-4.4 34%	0.4-0.8 50%	-	-	-	0 -0.1 0%	0.7-1.7 41%	0.1-0.3 33%	0.2-0.6 33%	0 -0.2 0%	0.1-0.5 20%	0 -0.1 0%	-
82	Maria Cardoso	ALM 2.4-6.2 39%	1.1-3.0 37%	-	-	-	0.2-0.4 50%	0.4-1.0 40%	0.2-0.7 29%	0 -0.1 0%	-	0.3-0.7 43%	-	-
83	Saunders	MAR 3.3-10.4 32%	0.7-2.9 24%	-	0-0.1 0%	0 -0.4 0%	0.4-1.2 33%	0.5-1.3 38%	0.1-0.9 11%	0.5-1.0 50%	0.1-0.6 17%	0.6-1.2 50%	0.1-0.3 33%	0.2-0.4 50%
84	Graham	ALM 3.8-8.4 45%	0 -0.2 0%	-	-	0.9-2.2 41%	0.1-0.3 33%	0.4-1.2 33%	0.7-1.2 58%	0 -0.2 0%	0 -0.2 0%	0.5-0.5 100%	0.8-0.9 89%	0.4-1.5 27%
85	Hernandez	MAR 2.8-8.9 31%	0.6-2.1 29%	-	-	0.2-0.8 25%	0.6-1.3 46%	0.3-0.5 60%	0.3-1.0 30%	0.2-0.5 40%	0 -0.2 0%	0.6-1.8 33%	0 -0.1 0%	0.1-0.3 33%