

SUMMARY REPORT

HOLLAND. DBL

2019–2020

ADVANCE PRO BASKETBALL

TEAMS RANKINGS

POINTS ANALYSIS.....	2
FIELD GOALS ANALYSIS.....	3
ATTACKS ANALYSIS.....	4
DEFENSE ANALYSIS.....	5
REBOUNDS, TURNOVERS, STEALS, FOULS.....	6
FIELD GOALS PLAYTYPES IN ATTACK.....	7
FIELD GOALS PLAYTYPES IN DEFENSE.....	8

PLAYERS RANKINGS

POINTS, ASSISTS, ATTACKS.....	9
REBOUNDS, TURNOVERS, FOULS, DEFENSE.....	10
FIELD GOALS PLAYTYPES.....	11

COMPARABLE TABLE

BOXSCORE. CENTERS.....	12
BOXSCORE. FORWARDS.....	13
BOXSCORE. GUARDS.....	14
FG PLAYTYPES. CENTERS.....	16
FG PLAYTYPES. FORWARDS.....	17
FG PLAYTYPES. GUARDS.....	18



InStat Index

	InStat Index	Matches played
1 Donar	220	22
2 Landstede	217	20
3 Den Bosch	217	23
4 Leiden	215	20
5 Feyenoord	210	22
6 Limburg	209	23
7 Den Helder	206	23
8 Aris	205	23
9 Amsterdam	204	22
AVERAGE	212	22



Points

		/100 poss
1 Landstede	87.15	100.98
2 Donar	85.36	100.74
3 Den Bosch	84.04	101.05
4 Leiden	83.25	96.19
5 Feyenoord	77.95	93.30
6 Amsterdam	73.64	84.91
7 Den Helder	73.43	84.78
8 Limburg	66.61	81.14
9 Aris	66.43	80.12
AVERAGE	77.54	91.51



Opp Points

		/100 poss
1 Donar	68.64	81.54
2 Den Bosch	70.43	84.55
3 Landstede	74.15	85.43
4 Limburg	76.30	92.12
5 Feyenoord	77.09	92.07
6 Aris	78.52	94.60
7 Leiden	80.20	93.91
8 Den Helder	83.30	96.42
9 Amsterdam	86.95	100.05
AVERAGE	77.29	91.22



+/-

		/100 poss
1 Donar	16.7	19.2
2 Den Bosch	13.6	16.5
3 Landstede	13.0	15.6
4 Leiden	3.1	2.3
5 Feyenoord	0.9	1.2
6 Limburg	-9.7	-11.0
7 Den Helder	-9.9	-11.6
8 Aris	-12.1	-14.5
9 Amsterdam	-13.3	-15.1



Points off turnovers

1 Donar	17.18
2 Landstede	15.75
3 Leiden	13.85
4 Den Bosch	12.74
5 Amsterdam	12.18
6 Den Helder	12.04
7 Feyenoord	10.50
8 Limburg	9.78
9 Aris	7.78
AVERAGE	12.42



Paint points

		Share
1 Landstede	42.80	49.1%
2 Donar	40.55	47.5%
3 Leiden	39.50	47.4%
4 Den Helder	35.83	48.8%
5 Den Bosch	34.70	41.3%
6 Feyenoord	33.55	43.0%
7 Amsterdam	33.55	45.6%
8 Aris	31.13	46.9%
9 Limburg	27.30	41.0%
AVERAGE	35.43	45.7%



Second chance points

		Share
1 Landstede	9.50	10.9%
2 Den Bosch	9.35	11.1%
3 Donar	9.05	10.6%
4 Aris	7.57	11.4%
5 Leiden	7.50	9.0%
6 Den Helder	7.43	10.1%
7 Amsterdam	6.68	9.1%
8 Feyenoord	6.55	8.4%
9 Limburg	5.26	7.9%
AVERAGE	7.65	9.9%



Starting lineup points

		Share
1 Leiden	68.85	82.7%
2 Landstede	63.20	72.5%
3 Donar	62.23	72.9%
4 Feyenoord	59.41	76.2%
5 Amsterdam	55.82	75.8%
6 Den Helder	55.30	75.3%
7 Aris	53.17	80.0%
8 Den Bosch	50.09	59.6%
9 Limburg	47.87	71.9%
AVERAGE	57.33	73.9%



Bench points

		Share
1 Den Bosch	33.96	40.4%
2 Landstede	23.95	27.5%
3 Donar	23.14	27.1%
4 Limburg	18.74	28.1%
5 Feyenoord	18.55	23.8%
6 Den Helder	18.13	24.7%
7 Amsterdam	17.82	24.2%
8 Leiden	14.40	17.3%
9 Aris	13.26	20.0%
AVERAGE	20.22	26.1%



Field goals

1	Donar	31.9 – 65.9	48.4%
2	Landstede	32.1 – 67.2	47.8%
3	Leiden	31.0 – 66.4	46.7%
4	Den Bosch	30.3 – 65.4	46.3%
5	Feyenoord	27.8 – 63.9	43.5%
6	Den Helder	28.0 – 66.5	42.1%
7	Amsterdam	26.4 – 63.9	41.3%
8	Limburg	24.4 – 60.6	40.3%
9	Aris	24.0 – 62.0	38.7%
AVERAGE		28.4 – 64.6	44.0%



3-pt field goals

1	Den Bosch	8.9 – 23.0	38.7%
2	Leiden	8.6 – 23.3	36.9%
3	Feyenoord	8.2 – 22.4	36.6%
4	Landstede	8.5 – 23.4	36.3%
5	Donar	9.2 – 26.1	35.2%
6	Limburg	8.2 – 23.3	35.2%
7	Den Helder	7.5 – 24.4	30.7%
8	Amsterdam	7.9 – 26.8	29.5%
9	Aris	6.8 – 25.5	26.7%
AVERAGE		8.2 – 24.2	33.9%



2-pt field goals

1	Donar	22.7 – 39.8	57.0%
2	Landstede	23.6 – 43.8	53.9%
3	Leiden	22.4 – 43.1	52.0%
4	Den Bosch	21.4 – 42.4	50.5%
5	Amsterdam	18.5 – 37.1	49.9%
6	Den Helder	20.4 – 42.1	48.5%
7	Aris	17.3 – 36.5	47.4%
8	Feyenoord	19.6 – 41.5	47.2%
9	Limburg	16.2 – 37.3	43.4%
AVERAGE		20.2 – 40.4	50.0%



Free throws

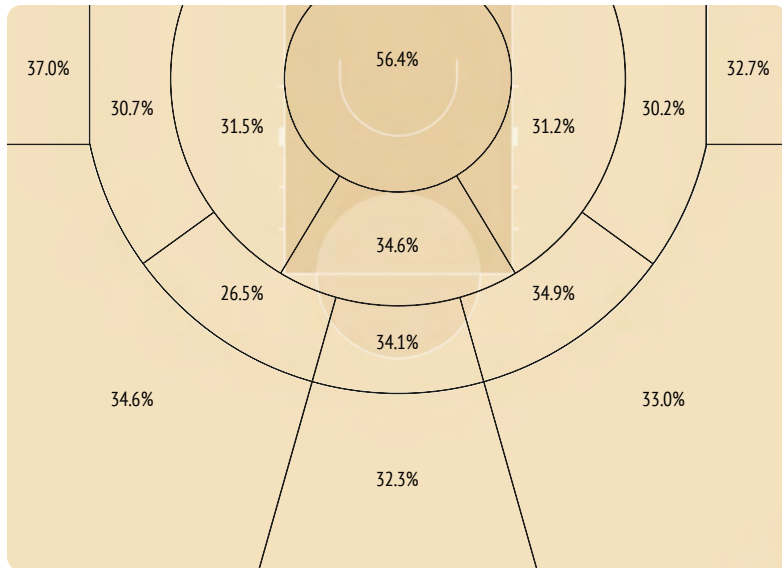
1	Leiden	12.7 – 16.7	76.0%
2	Amsterdam	13.0 – 17.1	76.0%
3	Feyenoord	14.1 – 18.6	75.8%
4	Aris	11.6 – 15.9	73.0%
5	Landstede	14.5 – 20.0	72.5%
6	Den Bosch	14.6 – 20.2	72.3%
7	Donar	12.5 – 17.5	71.4%
8	Den Helder	10.0 – 15.1	66.2%
9	Limburg	9.7 – 14.7	66.0%
AVERAGE		12.5 – 17.3	72.3%



Assists

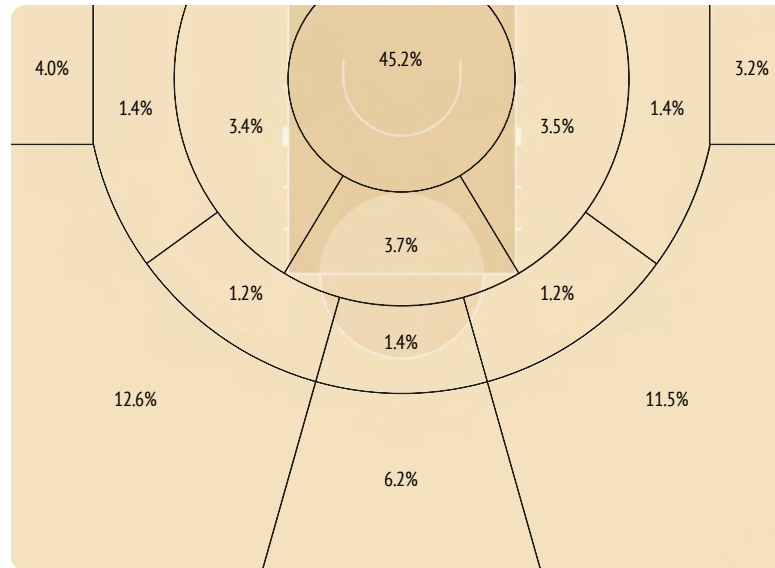
1	Donar	22.6
2	Landstede	21.6
3	Den Bosch	20.0
4	Den Helder	19.9
5	Leiden	18.9
6	Amsterdam	17.1
7	Feyenoord	16.8
8	Limburg	16.6
9	Aris	15.6
AVERAGE		18.8

Field goals - zones efficiency



100% – %FG - LEAGUE AVERAGE

Field goals - share by zones



100% – %FG - LEAGUE AVERAGE



Positional attacks

				Points	Turnovers
1	Den Bosch	40.0 – 74.4	53.8%	61.5	10.9
2	Donar	38.8 – 73.6	52.7%	60.6	12.1
3	Landstede	38.3 – 74.2	51.6%	60.4	11.9
4	Leiden	37.6 – 75.0	50.1%	59.8	12.2
5	Feyenoord	38.0 – 74.6	50.9%	56.0	10.7
6	Den Helder	35.2 – 77.4	45.5%	55.5	14.9
7	Limburg	33.7 – 76.0	44.3%	52.5	14.3
8	Amsterdam	35.0 – 76.4	45.8%	51.6	13.7
9	Aris	35.2 – 77.4	45.5%	50.7	15.3
AVERAGE		36.8 – 75.4	48.8%	56.5	12.9



Transitions

				Points	Turnovers
1	Landstede	8.5 – 12.1	70.2%	12.4	1.5
2	Donar	7.6 – 11.1	68.5%	12.2	1.5
3	Leiden	7.5 – 11.6	64.7%	10.9	2.0
4	Amsterdam	6.4 – 10.4	61.5%	9.0	1.6
5	Den Helder	5.4 – 9.3	58.1%	8.0	1.8
6	Den Bosch	6.1 – 8.7	70.1%	7.9	1.0
7	Feyenoord	5.3 – 9.0	58.9%	7.9	1.2
8	Limburg	3.7 – 6.1	60.7%	4.5	0.9
9	Aris	2.9 – 5.5	52.7%	4.1	1.1
AVERAGE		5.9 – 9.3	63.4%	8.5	1.4



Baseline combinations

				Points	Turnovers
1	Donar	1.9 – 3.5	54.3%	3.5	0.3
2	Leiden	1.8 – 3.6	50.0%	3.5	0.6
3	Landstede	1.8 – 3.3	54.5%	3.3	0.5
4	Den Bosch	1.7 – 3.3	51.5%	3.1	0.5
5	Feyenoord	1.6 – 3.6	44.4%	3.0	0.5
6	Limburg	1.5 – 3.3	45.5%	2.9	0.5
7	Amsterdam	1.5 – 3.5	42.9%	2.7	0.5
8	Den Helder	1.5 – 3.6	41.7%	2.6	0.7
9	Aris	1.1 – 3.3	33.3%	1.7	0.7
AVERAGE		1.6 – 3.4	47.1%	2.9	0.5



Sideline combinations

				Points	Turnovers
1	Amsterdam	3.2 – 6.8	47.1%	5.0	1.2
2	Den Bosch	2.6 – 4.5	57.8%	4.5	0.7
3	Aris	2.8 – 6.7	41.8%	4.4	1.5
4	Leiden	2.5 – 5.6	44.6%	4.0	0.9
5	Feyenoord	2.5 – 4.4	56.8%	3.9	0.8
6	Landstede	2.3 – 4.7	48.9%	3.9	0.7
7	Donar	2.4 – 4.5	53.3%	3.8	0.7
8	Limburg	2.0 – 5.3	37.7%	3.2	1.3
9	Den Helder	2.0 – 4.2	47.6%	2.9	0.8
AVERAGE		2.5 – 5.2	48.1%	3.9	1.0



Uncontested FG

1	Den Bosch	6.0 – 13.4	44.8%
2	Limburg	4.5 – 10.5	42.9%
3	Feyenoord	4.7 – 11.5	40.9%
4	Landstede	4.3 – 11.3	38.1%
5	Leiden	3.8 – 10.2	37.3%
6	Donar	5.2 – 14.6	35.6%
7	Amsterdam	3.8 – 11.3	33.6%
8	Aris	3.5 – 10.7	32.7%
9	Den Helder	4.1 – 12.6	32.5%
AVERAGE		4.4 – 11.8	37.3%



Contested FG

1	Donar	25.0 – 49.6	50.4%
2	Landstede	25.6 – 53.6	47.8%
3	Leiden	25.4 – 54.4	46.7%
4	Den Bosch	22.4 – 50.1	44.7%
5	Feyenoord	22.3 – 51.6	43.2%
6	Den Helder	22.2 – 52.3	42.4%
7	Amsterdam	20.5 – 50.5	40.6%
8	Aris	18.9 – 49.6	38.1%
9	Limburg	18.5 – 48.7	38.0%
AVERAGE		22.3 – 51.1	43.6%



Opp Points

	Points	/100 poss
1 Donar	68.64	81.54
2 Den Bosch	70.43	84.55
3 Landstede	74.15	85.43
4 Limburg	76.30	92.12
5 Feyenoord	77.09	92.07
6 Aris	78.52	94.60
7 Leiden	80.20	93.91
8 Den Helder	83.30	96.42
9 Amsterdam	86.95	100.05
AVERAGE	77.29	91.22



Opponents field goals

1 Donar	24.1 – 60.5	39.8%
2 Den Bosch	25.7 – 63.4	40.5%
3 Landstede	27.6 – 64.9	42.5%
4 Feyenoord	27.9 – 65.6	42.5%
5 Leiden	29.6 – 67.3	44.0%
6 Aris	27.7 – 62.9	44.0%
7 Limburg	28.1 – 62.6	44.9%
8 Den Helder	31.9 – 67.7	47.1%
9 Amsterdam	32.4 – 66.6	48.6%
AVERAGE	28.4 – 64.6	44.0%



Opp 3-pt field goals

1 Den Bosch	7.6 – 24.5	31.0%
2 Landstede	8.2 – 25.9	31.7%
3 Feyenoord	9.0 – 27.6	32.6%
4 Limburg	7.5 – 22.6	33.2%
5 Donar	7.6 – 22.7	33.5%
6 Aris	8.1 – 23.8	34.0%
7 Leiden	9.2 – 26.5	34.7%
8 Den Helder	7.6 – 21.5	35.3%
9 Amsterdam	9.1 – 23.9	38.1%
AVERAGE	8.2 – 24.3	33.7%



Opp Free throws

1 Feyenoord	12.3 – 17.9	68.7%
2 Den Helder	12.0 – 17.4	69.0%
3 Donar	12.7 – 17.8	71.3%
4 Den Bosch	11.5 – 16.0	71.9%
5 Leiden	11.8 – 16.2	72.8%
6 Amsterdam	13.2 – 17.9	73.7%
7 Limburg	12.6 – 17.1	73.7%
8 Aris	15.0 – 20.1	74.6%
9 Landstede	10.9 – 14.5	75.2%
AVERAGE	12.4 – 17.2	72.1%



Opp Assists

1 Donar	15.1
2 Den Bosch	16.2
3 Landstede	16.9
4 Limburg	17.5
5 Aris	19.7
6 Feyenoord	19.8
7 Den Helder	19.9
8 Leiden	20.8
9 Amsterdam	22.6
AVERAGE	18.7



Opp Points off turnovers

1 Donar	10.00
2 Landstede	10.10
3 Feyenoord	10.36
4 Den Bosch	10.39
5 Leiden	12.30
6 Limburg	13.09
7 Aris	13.91
8 Den Helder	15.09
9 Amsterdam	15.45
AVERAGE	12.30



Opp Paint points

1 Donar	28.18
2 Den Bosch	30.26
3 Landstede	33.00
4 Feyenoord	33.00
5 Aris	35.04
6 Leiden	35.90
7 Limburg	36.09
8 Amsterdam	41.45
9 Den Helder	44.00
AVERAGE	35.21



Opp Second chance points

1 Donar	5.18
2 Aris	5.26
3 Limburg	6.43
4 Den Bosch	6.70
5 Landstede	7.50
6 Leiden	8.50
7 Feyenoord	9.09
8 Amsterdam	10.00
9 Den Helder	10.17
AVERAGE	7.65



Opp Uncontested FG

1 Den Bosch	3.8 – 11.7	32.5%
2 Limburg	3.3 – 9.5	34.7%
3 Landstede	4.1 – 11.2	36.6%
4 Den Helder	4.3 – 11.6	37.1%
5 Aris	4.0 – 10.7	37.4%
6 Leiden	5.2 – 13.6	38.2%
7 Feyenoord	5.7 – 14.6	39.0%
8 Donar	5.0 – 12.1	41.3%
9 Amsterdam	4.9 – 11.5	42.6%
AVERAGE	4.4 – 11.8	37.3%



Opp Contested FG

1 Donar	18.0 – 47.2	38.1%
2 Den Bosch	20.6 – 50.5	40.8%
3 Feyenoord	20.4 – 49.1	41.5%
4 Landstede	22.0 – 52.2	42.1%
5 Leiden	22.5 – 51.8	43.4%
6 Aris	22.0 – 50.5	43.6%
7 Limburg	22.8 – 51.0	44.7%
8 Den Helder	25.5 – 54.0	47.2%
9 Amsterdam	25.7 – 53.4	48.1%
AVERAGE	22.3 – 51.1	43.6%



Rebounds

1	Donar	36.64	55.8%
2	Den Bosch	37.09	54.6%
3	Landstede	36.40	53.9%
4	Aris	35.00	50.8%
5	Leiden	33.60	48.9%
6	Feyenoord	32.86	48.0%
7	Den Helder	33.09	47.8%
8	Limburg	30.35	46.7%
9	Amsterdam	29.18	43.8%
AVERAGE		33.80	50.0%



Offensive rebounds

1	Donar	10.23	31.9%
2	Den Bosch	10.74	31.9%
3	Landstede	10.20	31.2%
4	Aris	10.22	28.9%
5	Den Helder	9.91	28.0%
6	Leiden	9.20	27.9%
7	Feyenoord	8.59	25.5%
8	Amsterdam	8.36	24.2%
9	Limburg	7.52	22.4%
AVERAGE		9.44	27.9%



Defensive rebounds

1	Donar	26.41	78.8%
2	Den Bosch	26.35	76.5%
3	Landstede	26.20	75.3%
4	Aris	24.78	73.8%
5	Limburg	22.83	72.4%
6	Feyenoord	24.27	69.4%
7	Den Helder	23.17	68.4%
8	Leiden	24.40	68.3%
9	Amsterdam	20.82	65.2%
AVERAGE		24.3	72.0%



Turnovers

1	Den Helder	17.13
2	Aris	16.52
3	Amsterdam	15.50
4	Limburg	15.26
5	Leiden	14.30
6	Donar	13.59
7	Landstede	13.40
8	Feyenoord	12.09
9	Den Bosch	12.04
AVERAGE		14.43



Steals

1	Leiden	10.15
2	Donar	9.55
3	Landstede	9.40
4	Den Helder	8.30
5	Den Bosch	7.57
6	Feyenoord	7.45
7	Amsterdam	7.14
8	Limburg	7.04
9	Aris	5.48
AVERAGE		8.01



Fouls

On shots		
1	Aris	20.52
2	Amsterdam	18.91
3	Limburg	18.70
4	Donar	17.95
5	Feyenoord	17.73
6	Den Bosch	17.52
7	Leiden	17.45
8	Den Helder	16.39
9	Landstede	16.25
AVERAGE		17.94



Good fouls

1	Den Helder	8.26	50.6%
2	Aris	9.70	47.3%
3	Landstede	7.50	46.0%
4	Feyenoord	8.05	45.8%
5	Amsterdam	8.55	45.5%
6	Donar	8.05	45.0%
7	Leiden	7.55	43.4%
8	Limburg	8.13	43.3%
9	Den Bosch	7.39	42.3%
AVERAGE		8.13	45.3%



Bad fouls

1	Leiden	9.45	54.3%
2	Limburg	10.09	54.0%
3	Donar	9.41	52.2%
4	Amsterdam	9.82	51.9%
5	Den Bosch	9.04	51.4%
6	Landstede	8.15	50.3%
7	Aris	10.26	50.2%
8	Feyenoord	8.77	49.7%
9	Den Helder	7.83	47.6%
AVERAGE		9.20	51.4%



Technical fouls

1	Leiden	0.70
2	Donar	0.38
3	Feyenoord	0.38
4	Amsterdam	0.36
5	Landstede	0.35
6	Den Helder	0.23
7	Aris	0.14
8	Limburg	0.09
9	Den Bosch	0.05
AVERAGE		0.30



Blockshots

1	Den Helder	3.91
2	Feyenoord	3.23
3	Leiden	3.00
4	Aris	3.00
5	Amsterdam	2.68
6	Den Bosch	2.65
7	Donar	2.64
8	Limburg	1.87
9	Landstede	1.85
AVERAGE		2.76



Pick'n`rolls Handler

				Share
1	Aris	3.0-8.0	38%	15%
2	Leiden	3.5-7.7	45%	13%
3	Feyenoord	3.3-8.0	41%	13%
4	Donar	3.1-7.1	44%	11%
5	Amsterdam	2.7-7.6	36%	11%
6	Limburg	2.4-6.6	36%	11%
7	Den Bosch	2.8-8.5	33%	10%
8	Den Helder	2.4-6.4	38%	10%
9	Landstede	2.4-7.7	31%	8%
AVERAGE				2.8-7.5 37% 11%



Pick'n`rolls Roller

				Share
1	Aris	1.7-3.1	55%	8%
2	Amsterdam	1.6-2.4	67%	7%
3	Den Helder	1.6-2.6	62%	6%
4	Landstede	1.3-1.9	68%	5%
5	Limburg	1.2-2.4	50%	5%
6	Donar	1.1-1.8	61%	4%
7	Feyenoord	0.7-1.3	54%	3%
8	Den Bosch	0.7-1.2	58%	3%
9	Leiden	0.6-1.3	46%	2%
AVERAGE				1.2-2.0 60% 5%



Catch and shoots

				Share
1	Limburg	6.1-16.7	37%	27%
2	Amsterdam	5.1-16.5	31%	22%
3	Den Bosch	6.0-14.9	40%	22%
4	Den Helder	5.4-17.5	31%	22%
5	Landstede	5.8-15.1	38%	20%
6	Leiden	5.5-14.5	38%	20%
7	Aris	4.2-16.0	26%	20%
8	Donar	5.5-15.2	36%	19%
9	Feyenoord	4.1-11.8	35%	17%
AVERAGE				5.3-15.3 35% 21%



Catch and drives

				Share
1	Leiden	2.4-4.8	50%	9%
2	Aris	1.8-4.6	39%	9%
3	Feyenoord	2.3-5.1	45%	9%
4	Limburg	1.9-5.5	35%	9%
5	Den Bosch	2.3-5.7	40%	9%
6	Landstede	2.2-4.5	49%	8%
7	Den Helder	2.1-5.6	38%	8%
8	Donar	1.9-4.5	42%	7%
9	Amsterdam	1.1-4.2	26%	5%
AVERAGE				2.0-4.9 41% 8%



Screen offs

				Share
1	Donar	2.5-6.4	39%	9%
2	Den Bosch	2.1-5.3	40%	8%
3	Landstede	1.3-3.3	39%	5%
4	Leiden	1.3-3.0	43%	5%
5	Aris	1.1-3.7	30%	5%
6	Limburg	1.2-4.0	30%	5%
7	Feyenoord	0.9-3.0	30%	4%
8	Amsterdam	1.0-2.6	38%	4%
9	Den Helder	1.0-2.6	38%	4%
AVERAGE				1.4-3.8 37% 6%



Post ups

				Share
1	Feyenoord	3.9-8.6	45%	16%
2	Aris	2.7-6.4	42%	13%
3	Den Bosch	3.4-7.2	47%	13%
4	Limburg	2.7-5.9	46%	12%
5	Landstede	2.5-5.9	42%	9%
6	Leiden	2.2-5.2	42%	8%
7	Amsterdam	1.7-3.8	45%	7%
8	Donar	1.8-4.1	44%	6%
9	Den Helder	1.5-4.4	34%	6%
AVERAGE				2.5-5.7 44% 10%



Transitions

				Share
1	Landstede	6.3-9.3	68%	22%
2	Donar	5.7-8.8	65%	20%
3	Leiden	5.3-8.8	60%	19%
4	Amsterdam	4.5-7.7	58%	19%
5	Den Helder	4.5-8.3	54%	18%
6	Feyenoord	4.1-8.0	51%	17%
7	Den Bosch	4.0-6.3	63%	15%
8	Aris	1.9-3.8	50%	9%
9	Limburg	1.8-4.0	45%	8%
AVERAGE				4.2-7.2 58% 17%



Isolations

				Share
1	Leiden	2.4-6.0	40%	9%
2	Feyenoord	1.6-4.6	35%	7%
3	Limburg	1.4-4.4	32%	6%
4	Den Bosch	1.5-3.5	43%	6%
5	Landstede	1.3-3.5	37%	5%
6	Den Helder	1.2-3.4	35%	5%
7	Donar	1.2-3.0	40%	4%
8	Aris	0.9-2.6	35%	4%
9	Amsterdam	0.9-2.3	39%	4%
AVERAGE				1.4-3.7 38% 6%



Hand offs

				Share
1	Amsterdam	2.1-5.1	41%	9%
2	Landstede	1.6-3.8	42%	6%
3	Aris	0.8-1.9	42%	4%
4	Feyenoord	1.1-2.4	46%	4%
5	Limburg	0.8-1.6	50%	4%
6	Den Bosch	1.2-2.7	44%	4%
7	Den Helder	1.0-2.4	42%	4%
8	Donar	0.6-1.6	38%	2%
9	Leiden	0.6-2.1	29%	2%
AVERAGE				1.1-2.6 42% 4%



Cuts

				Share
1	Den Helder	4.4-7.2	61%	18%
2	Donar	5.0-6.8	74%	18%
3	Landstede	4.1-5.7	72%	14%
4	Leiden	3.4-4.6	74%	13%
5	Amsterdam	3.0-4.6	65%	13%
6	Aris	2.5-4.4	57%	12%
7	Limburg	2.7-4.5	60%	12%
8	Den Bosch	2.9-4.3	67%	11%
9	Feyenoord	2.5-4.2	60%	10%
AVERAGE				3.4-5.1 67% 13%

Pick`n`rolls Handler

				Share
1	Limburg	3.9-9.7	40%	15%
2	Donar	2.9-9.6	30%	14%
3	Landstede	3.2-8.7	37%	13%
4	Den Bosch	3.0-8.0	38%	13%
5	Aris	2.7-7.3	37%	11%
6	Leiden	2.5-7.1	35%	9%
7	Feyenoord	2.3-6.1	38%	9%
8	Den Helder	2.5-5.9	42%	9%
9	Amsterdam	2.4-5.0	48%	8%
AVERAGE				2.8-7.5 37% 11%

Pick`n`rolls Roller

				Share
1	Amsterdam	1.6-2.2	73%	6%
2	Landstede	1.1-2.0	55%	5%
3	Donar	1.0-1.6	63%	5%
4	Aris	1.4-2.2	64%	5%
5	Feyenoord	1.2-2.1	57%	5%
6	Limburg	1.2-2.0	60%	5%
7	Den Bosch	1.2-2.4	50%	5%
8	Leiden	1.0-1.8	56%	4%
9	Den Helder	1.0-1.6	63%	4%
AVERAGE				1.2-2.0 60% 5%

Catch and shoots

				Share
1	Feyenoord	6.1-18.3	33%	25%
2	Leiden	6.1-18.8	32%	23%
3	Aris	5.5-16.2	34%	22%
4	Amsterdam	6.4-16.6	39%	22%
5	Donar	4.5-12.3	37%	21%
6	Den Bosch	4.8-14.7	33%	21%
7	Landstede	4.9-14.5	34%	20%
8	Limburg	4.6-13.7	34%	18%
9	Den Helder	4.7-13.9	34%	17%
AVERAGE				5.3-15.4 34% 21%

Catch and drives

				Share
1	Donar	2.1-5.4	39%	10%
2	Landstede	2.2-5.5	40%	9%
3	Den Bosch	2.0-4.6	43%	9%
4	Leiden	2.0-5.2	38%	8%
5	Feyenoord	2.0-4.4	45%	8%
6	Amsterdam	2.2-5.1	43%	8%
7	Limburg	2.0-4.9	41%	8%
8	Aris	1.7-4.8	35%	7%
9	Den Helder	2.0-4.9	41%	7%
AVERAGE				2.0-5.0 40% 8%

Screen offs

				Share
1	Limburg	1.7-4.0	43%	7%
2	Aris	1.6-3.8	42%	6%
3	Feyenoord	1.5-4.3	35%	6%
4	Den Bosch	1.3-4.0	33%	6%
5	Landstede	1.3-3.7	35%	5%
6	Donar	1.1-3.6	31%	5%
7	Leiden	1.2-2.9	41%	5%
8	Amsterdam	1.5-3.9	38%	5%
9	Den Helder	1.1-3.8	29%	4%
AVERAGE				1.4-3.8 37% 6%

Post ups

				Share
1	Den Helder	3.7-7.6	49%	13%
2	Limburg	3.1-6.7	46%	12%
3	Amsterdam	3.2-7.3	44%	11%
4	Landstede	2.4-5.4	44%	10%
5	Donar	1.9-4.3	44%	9%
6	Aris	2.3-5.4	43%	9%
7	Feyenoord	2.3-5.6	41%	9%
8	Leiden	2.0-4.7	43%	8%
9	Den Bosch	1.4-4.7	30%	6%
AVERAGE				2.5-5.7 44% 10%

Transitions

				Share
1	Den Helder	5.6-9.8	57%	20%
2	Aris	4.9-8.3	59%	19%
3	Amsterdam	5.0-8.1	62%	18%
4	Feyenoord	4.1-6.9	59%	17%
5	Donar	3.4-6.4	53%	16%
6	Leiden	4.2-7.6	55%	16%
7	Landstede	3.4-6.0	57%	14%
8	Limburg	3.7-5.9	63%	14%
9	Den Bosch	3.2-5.4	59%	14%
AVERAGE				4.2-7.1 59% 17%

Isolations

				Share
1	Den Bosch	1.7-4.6	37%	8%
2	Leiden	1.8-3.9	46%	7%
3	Landstede	1.4-4.0	35%	6%
4	Donar	1.2-4.4	27%	6%
5	Den Helder	1.7-4.5	38%	6%
6	Aris	1.3-3.0	43%	5%
7	Limburg	1.2-3.4	35%	5%
8	Feyenoord	1.1-3.0	37%	4%
9	Amsterdam	1.1-2.3	48%	4%
AVERAGE				1.4-3.7 38% 6%

Hand offs

				Share
1	Den Bosch	1.4-3.5	40%	6%
2	Landstede	1.1-3.0	37%	5%
3	Leiden	1.2-2.5	48%	5%
4	Aris	1.3-2.1	62%	5%
5	Feyenoord	1.2-2.9	41%	5%
6	Donar	0.9-3.1	29%	4%
7	Amsterdam	1.0-2.1	48%	4%
8	Limburg	0.9-2.2	41%	3%
9	Den Helder	0.9-1.9	47%	3%
AVERAGE				1.1-2.6 42% 4%

Cuts

				Share
1	Den Helder	4.9-7.1	69%	17%
2	Leiden	4.5-6.8	66%	17%
3	Amsterdam	4.1-6.9	59%	14%
4	Limburg	3.5-4.8	73%	14%
5	Landstede	3.1-4.2	74%	13%
6	Den Bosch	2.6-3.9	67%	12%
7	Donar	2.3-3.5	66%	11%
8	Aris	2.8-4.4	64%	11%
9	Feyenoord	2.7-4.7	57%	11%
AVERAGE				3.4-5.1 67% 13%

InStat Index

			InStat Index	Matches played
1	Thomas	DON	230	18
2	Love	DON	229	22
3	Dahlman	LAN	228	19
4	Persons	LEI	227	18
5	Walker	LAN	224	18
6	Williams Jr.	DON	223	21
7	Koenis	DON	223	20
8	Van Der Mars	DB	222	23
9	Williams	LEI	222	20
10	Wilson	DB	222	23

Points

			Points	/100 poss
1	Cannefax	AMS	21.44	28.63
2	Snider	FEY	18.82	27.11
3	Williams	LEI	17.80	25.85
4	Mazurczak	ARI	17.56	24.60
5	Woods	FEY	16.91	26.12
6	Walker	LAN	16.83	29.50
7	Persons	LEI	16.50	21.63
8	Wilson	DB	16.35	30.98
9	Idowu	ARI	16.33	30.30
10	Thomas	DON	15.72	26.57

Field goals

1	Williams	LEI	7.2-13.1	55%
2	Cannefax	AMS	7.0-14.4	49%
3	Idowu	ARI	6.7-12.5	54%
4	Persons	LEI	6.6-14.0	47%
5	Mazurczak	ARI	6.6-11.5	57%
6	Snider	FEY	6.3-15.6	40%
7	Woods	FEY	6.0-13.1	46%
8	Thomas	DON	5.8-10.6	55%
9	Wilson	DB	5.8-12.5	46%
10	Dahlman	LAN	5.8-9.7	60%

2-pt field goals

1	Idowu	ARI	6.1-10.6	58%
2	Williams	LEI	6.0-10.2	59%
3	Persons	LEI	5.8-11.6	50%
4	Dahlman	LAN	5.8-9.7	60%
5	Cannefax	AMS	5.6-9.9	57%
6	Brussen	DH	5.4-10.8	50%
7	Mazurczak	ARI	5.3-8.6	62%
8	Thomas	DON	5.0-7.9	63%
9	Aarts	LIM	4.4-8.7	51%
10	Weijs	AMS	4.3-6.5	66%

3-pt field goals

1	Williams Jr.	DON	3.3-7.8	42%
2	Snider	FEY	3.1-7.8	40%
3	Walker	LAN	3.0-5.8	52%
4	Wilson	DB	2.8-6.7	42%
5	Huggins	LEI	2.5-5.7	44%
6	Dorsey-Walker	LAN	2.4-6.1	39%
7	van der Vuurst de Vries	DH	2.1-6.7	31%
8	Woods	FEY	1.8-4.2	43%
9	de Jong	LEI	1.8-5.8	31%
10	Bonifant	DB	1.7-3.6	47%

Free throws

1	Woods	FEY	3.2-3.6	88.9%
2	Cannefax	AMS	6.1-7.1	85.9%
3	Mazurczak	ARI	3.1-3.7	83.8%
4	Snider	FEY	3.1-3.7	83.8%
5	Dahlman	LAN	4.1-5.0	82.0%
6	Omot	LEI	4.2-5.2	80.8%
7	Mikalauskas	ARI	4.5-5.6	80.4%
8	Johnson	LAN	3.8-4.9	77.6%
9	Thomas	DON	3.2-4.4	72.7%

Assists

1	Persons	LEI	8.1
2	Love	DON	6.6
3	Overbeek	LIM	6.4
4	Snider	ARI	5.8
5	Chambers	DB	5.8
6	Gorissen	DH	5.5
7	Hoeve	ARI	5.3
8	Cannefax	AMS	5.1
9	Johnson	LAN	5.0
10	van der Vuurst de Vries	DH	4.7

Uncontested FG

1	Snider	FEY	1.8-3.6	50.0%
2	Williams Jr.	DON	1.8-3.7	48.6%
3	Wilson	DB	1.7-3.5	48.6%
4	Bonifant	DB	1.2-1.9	63.2%
5	van der Vuurst de Vries	DH	1.2-3.4	35.3%
6	Wirjo	LIM	1.2-2.7	44.4%
7	Walker	LAN	1.2-2.4	50.0%
8	Dorsey-Walker	LAN	1.1-2.5	44.0%
9	Versteeg	AMS	1.0-3.0	33.3%
10	Woods	FEY	1.0-2.2	45.5%

Contested FG

1	Idowu	ARI	6.1-11.3	54.0%
2	Williams	LEI	6.0-10.6	56.6%
3	Persons	LEI	5.6-12.4	45.2%
4	Cannefax	AMS	5.3-12.1	43.8%
5	Dahlman	LAN	5.2-8.9	58.4%
6	Mazurczak	ARI	5.1-9.3	54.8%
7	Brussen	DH	4.9-10.3	47.6%
8	Woods	FEY	4.8-10.6	45.3%
9	Thomas	DON	4.7-8.2	57.3%
10	de Jong	LEI	4.6-10.4	44.2%

+/-

			Average per match
1	Love	DON	316.0 14.4
2	Caruso	DB	271.0 11.8
3	Hamminck	DON	269.0 14.2
4	Koenis	DON	267.0 13.4
5	Thomas	DON	250.0 13.9
6	Chambers	DB	241.0 11.0
7	Williams Jr.	DON	235.0 11.2
8	Kherrazi	LAN	202.0 10.1
9	Wilson	DB	173.0 7.5
10	Wessels	DB	163.0 7.1

Blockshots

1	Williams	DH	1.65
2	Weijs	AMS	1.59
3	Idowu	ARI	1.57
4	Lawton	FEY	1.62
5	Vanderhaegen	DH	1.17
6	Smith	DON	1.00
7	Van Der Mars	DB	0.87
8	Omot	LEI	0.90
9	Thomas	DON	0.78
10	Huggins	LEI	0.75

Blockshots against

1	Rados Injured	LAN	1.25
2	Johnson	LAN	1.10
3	Persons	LEI	1.00
4	Aarts	LIM	0.91
5	Burch-Manning	LIM	0.83
6	Hoeve	ARI	0.83
7	Thomas	DON	0.67
8	Williams	LEI	0.65
9	Snider	FEY	0.73
10	Voorn	DB	0.67

Rating

			Net rating	Offensive rating	Defensive rating
1	Hamminck	DON	26.2	104.6	78.4
2	Koenis	DON	25.6	102.4	76.7
3	Caruso	DB	22.5	107.7	85.2
4	Love	DON	22.4	104.4	82.0
5	Thomas	DON	21.6	103.5	81.8
6	Elzen	DB	19.4	98.1	78.8
7	Wessels	DB	19.0	107.5	88.6
8	Chambers	DB	18.8	104.2	85.4
9	Williams Jr.	DON	18.5	101.3	82.7
10	Thelissen	DB	17.9	98.9	81.0



Rebounds

1	Kherrazi	LAN	9.10
2	Osaikhwuwuomwan	ARI	8.91
3	Brussen	DH	8.43
4	Van Der Mars	DB	8.17
5	Williams	LEI	8.20
6	Mikalauskas	ARI	8.00
7	Brandwijk	FEY	7.79
8	Idowu	ARI	7.62
9	Thomas	DON	7.33
10	Aarts	LIM	7.09



Offensive rebounds

1	Rados Injured	LAN	3.50
2	Dahlman	LAN	3.28
3	Idowu	ARI	3.10
4	Brussen	DH	3.13
5	Van Der Mars	DB	2.91
6	Mikalauskas	FEY	2.57
7	Koenis	DON	2.45
8	Miller	DH	2.50
9	Kherrazi	LAN	2.45
10	Brandwijk	FEY	2.37



Defensive rebounds

1	Kherrazi	LAN	6.65
2	Osaikhwuwuomwan	ARI	6.64
3	Williams	LEI	6.15
4	Mikalauskas	ARI	6.08
5	Thomas	DON	5.50
6	Brandwijk	FEY	5.42
7	Brussen	DH	5.30
8	Burch-Manning	LIM	5.26
9	Van Der Mars	DB	5.26
10	Aarts	LIM	5.00



Turnovers

1	Hoeve	ARI	4.00
2	Cannefax	AMS	3.75
3	Persons	LEI	3.67
4	Mazurczak	ARI	3.12
5	Miller	DH	3.14
6	Overbeek	LIM	3.00
7	Aarts	LIM	2.96
8	Dedecker	ARI	2.90
9	van Oostrum	LAN	2.89
10	Johnson	LAN	2.80



Steals

1	de Jong	LEI	2.89
2	Love	DON	2.55
3	van Oostrum	LAN	2.00
4	Williams	LEI	1.85
5	Persons	LEI	1.78
6	Williams	DH	1.80
7	Ververs	LEI	1.75
8	Kherrazi	LAN	1.75
9	Mazurczak	ARI	1.56
10	Miller	DH	1.59



Fouls

				On shots
1	Idowu	ARI	3.71	1.2
2	Aarts	LIM	3.30	0.7
3	Koenis	DON	3.20	0.8
4	Gorissen	DH	3.20	1.2
5	Markusse	AMS	3.14	1.1
6	Vanderhaegen	DH	3.04	1.5
7	Weijs	AMS	3.00	1.1
8	Wessels	DB	2.87	0.5
9	Williams	LEI	2.90	1.0
10	Lawton	FEY	2.86	1.0



Good fouls

				Share
1	Gorissen	DH	1.85	58%
2	Vanderhaegen	DH	1.87	62%
3	Idowu	ARI	1.76	47%
4	Hoeve	ARI	1.67	67%
5	Markusse	AMS	1.71	54%
6	Smith	DON	1.60	62%
7	Mikalauskas	ARI	1.54	56%
8	Versteeg	AMS	1.50	75%
9	Weijs	AMS	1.50	50%
10	Tonjann	ARI	1.48	67%



Bad fouls

				Share
1	Aarts	LIM	2.09	63%
2	Koenis	DON	1.95	61%
3	Idowu	ARI	1.95	53%
4	Brandma	ARI	1.83	65%
5	Vitkovic	AMS	1.67	57%
6	Dorsey-Walker	LAN	1.61	67%
7	Lawton	FEY	1.57	55%
8	Wessels	DB	1.61	56%
9	Dedecker	ARI	1.50	60%
10	Weijs	AMS	1.45	48%



Technical fouls

1	Williams	LEI	0.30
2	Rados Injured	LAN	0.25
3	Osaikhwuwuomwan	ARI	0.20
4	Persons	LEI	0.22
5	Lawton	FEY	0.20
6	Hammink	DON	0.22
7	Gorissen	DH	0.10
8	Smith	DON	0.11
9	van der Vuurst de Vries	DH	0.05
10	Mikalauskas	ARI	0.08



Fouls suffered

				Shooting share
1	Cannefax	AMS	8.12	25%
2	Mikalauskas	ARI	6.31	17%
3	Johnson	LAN	4.80	31%
4	Mazurczak	ARI	4.44	13%
5	Aarts	LIM	4.35	34%
6	de Jong	LEI	4.17	21%
7	Omot	LEI	4.00	40%
8	Dahlman	LAN	4.00	46%
9	Thomas	DON	3.67	46%
10	Burch-Manning	LIM	3.70	31%



Opp Points

				Points /100 poss
1	Vanderhaegen	DH	14.6	23.6
2	Williams	LEI	13.8	20.2
3	Weijs	AMS	13.6	21.6
4	Aarts	LIM	13.6	25.2
5	Lawton	FEY	13.2	29.5
6	Idowu	ARI	13.1	24.7
7	de Jong	LEI	12.3	16.1
8	Hoeve	ARI	12.0	21.8
9	van der Vuurst de Vries	DH	11.7	15.1
10	Cannefax	AMS	11.4	15.3



Opponents field goals

1	Vanderhaegen	DH	5.5-11.6	47%
2	Aarts	LIM	5.3-11.6	46%
3	Lawton	FEY	5.1-11.1	46%
4	Williams	LEI	5.0-11.3	44%
5	Brussen	DH	5.0-10.3	49%
6	Weijs	AMS	4.9-11.7	42%
7	Idowu	ARI	4.8-10.4	46%
8	de Jong	LEI	4.7-10.8	44%
9	Kherrazi	LAN	4.5-9.9	45%
10	van der Vuurst de Vries	DH	4.5-9.8	46%



Opp 3-pt field goals

1	Aarts	LIM	4.4-9.1	48%
2	Vanderhaegen	DH	4.4-9.1	48%
3	Brussen	DH	4.4-8.4	52%
4	Lawton	FEY	4.0-8.3	48%
5	Weijs	AMS	3.8-9.1	42%
6	Idowu	ARI	3.8-8.1	47%
7	Williams	LEI	3.6-7.8	46%
8	Kherrazi	LAN	3.6-7.1	51%
9	Hoeve	ARI	3.3-5.0	66%
10	Koenis	DON	3.3-7.6	43%



Opp 2-pt field goals

1	Versteeg	AMS	2.0-3.5	57%
2	Johnson	LAN	1.9-3.9	49%
3	Woods	FEY	1.6-4.3	37%
4	Koopmans	ARI	1.5-3.0	50%
5	de Jong	LEI	1.5-5.4	28%
6	Hope	AMS	1.4-3.4	41%
7	Williams	LEI	1.4-3.5	40%
8	Bruining	FEY	1.2-2.9	41%
9	van der List	FEY	1.2-3.6	33%
10	Dahlman	LAN	1.2-3.2	38%



Pick'n`rolls Handler

1	Mazurczak	ARI	2.6-4.3	60%
2	Love	DON	1.9-3.6	53%
3	Snider	FEY	1.7-4.5	38%
4	Cannefax	AMS	1.6-3.5	46%
5	Persons	LEI	1.5-3.1	48%
6	Johnson	LAN	1.1-4.9	22%
7	Miller	DH	1.0-2.4	42%
8	Woods	FEY	1.0-2.4	42%
9	de Jong	LEI	1.0-2.4	42%
10	Huggins	LEI	1.0-2.3	43%



Pick'n`rolls Roller

1	Weijs	AMS	1.1-1.3	85%
2	Brussen	DH	1.1-1.8	61%
3	Idowu	ARI	1.1-1.6	69%
4	Koenis	DON	0.7-1.1	64%
5	Brandsma	ARI	0.7-1.4	50%
6	Aarts	LIM	0.7-1.5	47%
7	Dahlman	LAN	0.6-0.9	67%
8	Williams	LEI	0.4-0.6	67%
9	Van Der Mars	DB	0.4-0.8	50%
10	Bleeker	LAN	0.4-0.5	80%



Pick'n`pops

1	Williams	LEI	0.5-1.1	45%
2	Idowu	ARI	0.4-1.0	40%
3	Smith	DON	0.3-0.7	43%
4	Pasalic	LEI	0.3-1.0	30%
5	Randamie	LEI	0.3-0.8	38%
6	Weijs	AMS	0.3-0.6	50%
7	van der List	FEY	0.2-0.5	40%
8	Nossek	LIM	0.2-0.7	29%
9	Aarts	LIM	0.2-0.3	67%
10	Osaikhwuomwan	ARI	0.2-0.5	40%



Post ups

1	van der List	FEY	1.9-4.0	48%
2	Idowu	ARI	1.8-3.9	46%
3	Van Der Mars	DB	1.8-4.2	43%
4	Norel	DB	1.7-3.1	55%
5	Aarts	LIM	1.4-3.1	45%
6	Dahlman	LAN	1.3-2.5	52%
7	Rados Injured	LAN	1.3-2.5	52%
8	Lawton	FEY	1.1-2.8	39%
9	de Pagter	LAN	1.0-2.0	50%
10	Versteeg	AMS	1.0-1.5	67%



Isolations

1	Johnson	LAN	1.3-2.7	48%
2	Burch-Manning	LIM	1.0-2.7	37%
3	Persons	LEI	0.9-2.2	41%
4	Huggins	LEI	0.7-1.6	44%
5	Woods	FEY	0.7-1.6	44%
6	Mazurczak	ARI	0.6-1.4	43%
7	Cannefax	AMS	0.6-1.1	55%
8	Wilson	DB	0.6-1.0	60%
9	Versteeg	AMS	0.5-0.5	100%
10	Love	DON	0.5-1.0	50%



Catch and shoots

1	Walker	LAN	2.1-3.9	54%
2	Williams Jr.	DON	1.6-3.3	48%
3	Wirjo	LIM	1.5-3.4	44%
4	van der Vuurst de Vries	DH	1.4-4.7	30%
5	Vanderhaegen	DH	1.4-4.0	35%
6	Bonifant	DB	1.3-2.7	48%
7	Wilson	DB	1.3-3.2	41%
8	Hollanders	LIM	1.3-3.5	37%
9	Dorsey-Walker	LAN	1.3-3.1	42%
10	Huggins	LEI	1.3-2.6	50%



Catch and drives

1	Schaik	LAN	1.0-1.0	100%
2	Mazurczak	ARI	0.9-1.3	69%
3	Persons	LEI	0.8-1.6	50%
4	de Jong	LEI	0.7-1.1	64%
5	Burch-Manning	LIM	0.7-1.7	41%
6	Miller	DH	0.6-1.5	40%
7	Krill	DB	0.6-1.4	43%
8	Wilson	DB	0.6-1.2	50%
9	Mikalauskas	ARI	0.6-1.3	46%
10	Williams	LEI	0.6-1.3	46%



Screen offs

1	Williams Jr.	DON	1.1-2.9	38%
2	Wilson	DB	0.8-2.1	38%
3	Taylor	DON	0.7-1.3	54%
4	Bonifant	DB	0.7-1.5	47%
5	Thomas	DON	0.5-0.8	63%
6	Walker	LAN	0.4-1.1	36%
7	Van Vliet	DB	0.4-0.9	44%
8	Dorsey-Walker	LAN	0.4-0.7	57%
9	van der Vuurst de Vries	DH	0.3-0.9	33%
10	Uijtendaal	AMS	0.3-0.5	60%



Hand offs

1	Cannefax	AMS	0.9-1.9	47%
2	Snider	FEY	0.6-1.1	55%
3	Wilson	DB	0.6-1.0	60%
4	Wirjo	LIM	0.4-0.6	67%
5	van Schaik	LAN	0.4-0.4	100%
6	de Jong	LEI	0.4-0.9	44%
7	Uijtendaal	AMS	0.4-0.8	50%
8	Dorsey-Walker	LAN	0.4-1.2	33%
9	Dedecker	ARI	0.3-0.5	60%
10	Hope	AMS	0.3-0.8	38%



Transitions

1	Cannefax	AMS	2.2-3.3	67%
2	Johnson	LAN	1.7-3.2	53%
3	Walker	LAN	1.6-1.9	84%
4	Snider	FEY	1.4-3.0	47%
5	Persons	LEI	1.3-2.5	52%
6	Woods	FEY	1.3-2.3	57%
7	Dahlman	LAN	1.3-1.6	81%
8	Huggins	LEI	1.3-2.2	59%
9	Omot	LEI	1.2-1.6	75%
10	Williams	LEI	1.1-1.4	79%



Cuts

1	Brussen	DH	1.7-3.0	57%
2	Thomas	DON	1.4-1.8	78%
3	Williams	LEI	1.3-1.7	76%
4	Vrede	LIM	1.1-1.3	85%
5	Dahlman	LAN	1.1-1.3	85%
6	Wessels	DB	1.0-1.4	71%
7	Rados Injured	LAN	1.0-1.3	77%
8	Freeman	DON	0.9-1.3	69%
9	Vanderhaegen	DH	0.9-1.2	75%
10	McCarthy	DON	0.9-1.1	82%



Putbacks

1	Idowu	ARI	1.5-2.1	71%
2	Rados Injured	LAN	1.0-1.8	56%
3	Lawton	FEY	0.8-1.6	50%
4	Kherrazi	LAN	0.7-1.2	58%
5	Williams	LEI	0.7-1.2	58%
6	Dahlman	LAN	0.7-1.2	58%
7	Brussen	DH	0.7-1.4	50%
8	Osaikhwuomwan	ARI	0.6-0.8	75%
9	McCarthy	DON	0.6-1.0	60%
10	Koenis	DON	0.6-0.9	67%



Centers

		InStat Index	Matches	Minutes	Points	/100 poss	Assists	Field goals		3-pt field goals		Free throws		REBOUNDS					FOULS					BLK	BLK against	Opp Points	Opponents field goals		+/-	Net rating
								3-6	50%	0.2-1.1	18%	0.9-1.7	53%	Total	Offense	Defense	Turnov	Steals	Fouls	Reason	Unreason	Tech	Against				Opp Points	Opponents field goals		
1	Koenis	DON	223	20	24:27	8.0	15.6	3-6	50%	0.2-1.1	18%	0.9-1.7	53%	6.6	2.5	4.2	2.0	1.1	3.2	1.3	2.0	-	2.6	0.4	0.3	10.2	4.0-9.8	41%	267.0	25.6
2	Van Der Mars	DB	222	23	20:58	9.9	22.2	4-8	50%	-	-	1.8-2.4	75%	8.2	2.9	5.3	1.3	0.5	1.4	0.6	0.6	0.1	2.9	0.9	0.6	6.7	2.7-7.5	36%	135.0	11.6
3	Rados Injured	LAN	221	4	15:44	8.8	25.2	4-7	57%	-	-	0.8-1.8	44%	6.8	3.5	3.3	2.8	0.3	2.5	1.3	1.3	0.3	2.5	0.5	1.3	8.0	3.0-7.0	43%	37.0	19.3
4	Norel	DB	217	7	11:19	7.0	31.4	3-5	60%	-	-	1.6-2.1	76%	4.3	1.9	2.4	1.6	0.3	1.1	0.3	0.6	-	3.0	0.1	0.1	5.0	1.9-4.7	40%	29.0	22.2
5	van der List	FEY	216	20	22:16	11.9	25.6	4-9	44%	0.7-2.2	32%	2.4-2.9	83%	4.8	0.8	4.0	1.5	0.5	2.4	1.2	1.2	-	3.1	0.6	0.1	11.0	4.0-9.7	41%	124.0	11.3
6	Bleeker	LAN	214	15	15:34	7.6	23.0	3-6	50%	0.4-1.5	27%	1.1-1.5	73%	4.8	1.3	3.5	0.9	0.5	2.0	1.1	0.7	0.1	1.7	0.7	0.2	8.5	2.9-7.0	41%	38.0	14.1
7	Pasalic	LEI	211	19	16:41	6.1	16.5	2-5	40%	1.0-2.3	43%	0.5-0.6	83%	3.0	0.6	2.4	0.8	0.5	2.3	0.8	1.4	-	0.5	0.1	0.1	8.8	3.5-7.6	46%	81.0	11.3
8	Brussen	DH	209	23	31:34	13.2	19.4	5-11	45%	-	-	2.4-4.0	60%	8.4	3.1	5.3	1.8	0.5	1.7	0.7	0.9	-	3.6	0.2	0.6	11.4	5.0-10.3	49%	-200.0	-13.1
9	Weijs	AMS	208	22	28:41	14.0	22.2	5-10	50%	1.1-3.6	31%	2.1-2.7	78%	6.1	1.3	4.7	1.9	0.7	3.0	1.5	1.5	0.1	2.9	1.6	0.4	13.6	4.9-11.7	42%	-213.0	-15.3
10	Randamie	LEI	208	20	19:50	3.4	7.9	1-4	25%	0.7-2.0	35%	0.1-0.2	50%	2.8	1.0	1.8	0.7	0.7	2.7	1.1	1.5	-	0.7	0.2	0.1	7.7	3.0-6.4	47%	26.0	2.4
11	Vanderhaegen	DH	208	23	28:53	12.9	20.8	5-11	45%	1.6-5.3	30%	1.0-1.7	59%	5.0	1.0	4.0	2.3	1.3	3.0	1.9	1.2	-	1.6	1.2	0.4	14.6	5.5-11.6	47%	-94.0	-6.7
12	Tongeren	AMS	201	7	11:59	3.1	12.1	1-3	33%	0.1-1.0	10%	0.4-0.4	100%	1.7	0.7	1.0	0.9	0.3	1.1	0.4	0.7	-	0.3	-	-	5.9	2.1-3.4	62%	-35.0	-20.5
13	De Vries	ARI	200	22	16:14	3.6	10.6	1-4	25%	0.5-2.6	19%	0.6-1.0	60%	2.6	0.6	2.0	1.3	0.4	2.0	1.1	0.8	-	0.9	0.3	0.1	6.7	2.3-4.6	50%	-151.0	-18.2
14	Idada	DH	196	1	2:42	2.0	28.6	-	-	-	-	2.0-2.0	100%	-	-	-	1.0	-	1.0	-	1.0	-	1.0	-	-	5.0	2.0-2.0	100%	1.0	14.3

 Forwards

		InStat Index	Matches	Minutes	Points	/100 poss	Assists	Field goals					Free throws					REBOUNDS					FOULS					BLK	BLK against	Opp Points	Opponents field goals	+/-	Net rating
								3-pt	field goals	3-pt	field goals	Free throws	Total	Offense	Defense	Turnov	Steals	Fouls	Reason	Unreason	Tech	Against											
1	Thomas	DON	230	18	27:40	15.7	26.6	2.7	6-11	55%	0.8-2.7	30%	3.2-4.4	73%	7.3	1.8	5.5	1.6	1.1	2.1	0.9	1.1	-	3.7	0.8	0.7	8.4	2.9-8.6	34%	250.0	21.6		
2	Dahlman	LAN	228	19	26:05	15.7	28.0	2.8	6-10	60%	0-0.1	0%	4.1-5.0	82%	6.1	3.3	2.8	1.4	1.1	1.1	0.6	0.5	-	4.0	0.2	0.5	7.9	3.2-7.9	41%	154.0	15.3		
3	Williams	LEI	222	20	31:58	17.8	25.9	1.4	7-13	54%	1.3-2.9	45%	2.2-3.1	71%	8.2	2.1	6.2	2.4	1.9	2.9	1.5	1.4	0.3	3.2	0.7	0.7	13.8	5.0-11.3	44%	27.0	0.9		
4	Smith	DON	222	10	20:12	9.6	23.1	0.9	4-7	57%	1.2-3.0	40%	0.6-1.4	43%	5.7	1.5	4.2	1.6	1.1	2.6	1.6	0.8	0.1	0.7	1.0	-	6.9	2.1-6.3	33%	81.0	24.0		
5	Wessels	DB	220	23	19:51	7.8	19.4	2.0	3-5	60%	0-0.4	0%	1.5-2.4	63%	5.2	1.7	3.5	0.7	0.7	2.9	1.2	1.6	-	2.4	0.2	0.2	7.7	2.8-6.8	41%	163.0	19.0		
6	Caruso	DB	219	23	24:08	11.1	22.0	1.5	4-8	50%	1.0-2.2	45%	2.7-3.1	87%	5.0	1.5	3.5	1.4	1.3	1.5	0.5	0.9	-	2.5	-	0.3	8.4	3.3-7.4	45%	271.0	22.5		
7	Kherrazi	LAN	217	20	24:54	6.6	12.0	2.8	3-7	43%	0-0.1	0%	0.9-2.2	41%	9.1	2.5	6.7	1.8	1.8	2.2	1.0	1.1	-	2.1	0.3	0.5	11.3	4.5-9.9	45%	202.0	17.5		
8	Idowu	ARI	217	21	26:13	16.3	30.3	0.9	7-13	54%	0.5-1.9	26%	2.5-3.7	68%	7.6	3.1	4.5	2.6	0.7	3.7	1.8	2.0	-	3.3	1.6	0.4	13.1	4.8-10.4	46%	-119.0	-11.6		
9	McCarthy	DON	217	22	18:17	7.7	19.5	0.8	3-6	50%	0.4-1.1	36%	1.1-1.5	73%	5.3	1.8	3.6	1.2	0.6	1.9	1.1	0.7	-	1.8	0.4	0.3	7.9	2.7-7.6	36%	115.0	12.1		
10	de Pagter	LAN	216	19	18	7.3	18.7	1.9	3-5	60%	0.2-0.6	33%	1.3-2.1	62%	3.8	1.0	2.8	1.3	0.6	2.2	1.1	1.0	0.1	1.7	0.1	0.3	7.7	2.6-6.2	42%	120.0	16.1		
11	Burch-Manning	LIM	215	23	33:13	14.8	21.7	3.3	5-14	36%	1.6-4.1	39%	2.7-3.7	73%	6.3	1.0	5.3	1.7	1.4	2.1	1.1	1.0	0.1	3.7	0.4	0.8	9.9	3.8-8.8	43%	-144.0	-9.0		
12	Bonifant	DB	214	20	17:54	7.5	20.2	1.3	3-5	60%	1.7-3.6	47%	0.4-0.6	67%	1.2	0.3	1.0	0.7	0.4	1.8	1.0	0.8	-	0.5	0.3	0.1	4.7	1.5-4.1	37%	82.0	11.4		
13	Aarts	LIM	213	23	26:08	11.1	20.8	1.7	4-9	44%	-	-	2.4-4.4	55%	7.1	2.1	5.0	3.0	0.9	3.3	1.2	2.1	-	4.4	0.7	0.9	13.6	5.3-11.6	46%	-110.0	-8.5		
14	Omot	LEI	213	10	19:08	12.4	29.2	1.6	4-8	50%	0.6-2.2	27%	4.2-5.2	81%	2.8	1.1	1.7	1.9	0.5	1.4	0.4	1.0	0.1	4.0	0.9	0.3	8.6	3.0-6.4	47%	-19.0	-9.2		
15	Thelissen	DB	211	19	13:07	3.1	10.9	1.0	1-2	50%	0.5-1.3	38%	0.5-1.0	50%	1.8	0.6	1.2	0.4	0.3	1.1	0.7	0.4	-	0.7	0.2	0.2	3.5	1.4-3.3	42%	105.0	17.9		
16	Osaikhwuwuomwan	ARI	210	11	27:16	11.1	20.4	1.0	4-9	44%	0.9-2.4	38%	1.6-2.6	62%	8.9	2.3	6.6	1.0	0.9	1.6	0.6	1.0	0.2	1.9	0.5	0.6	9.6	3.9-9.5	41%	-68.0	-12.0		
17	Vitkovic	AMS	210	18	26:08	10.6	18.5	3.4	3-9	33%	1.3-4.3	30%	2.6-3.2	81%	4.9	1.4	3.5	1.7	1.2	2.9	1.2	1.7	0.1	3.2	0.1	0.2	10.6	4.0-8.9	45%	-71.0	-5.7		
18	Brandwijk	FEY	209	19	28:35	7.3	12.4	1.9	3-7	43%	0-0.6	0%	1.8-3.2	56%	7.8	2.4	5.4	1.3	0.8	2.5	1.3	1.2	-	3.2	0.6	0.4	10.6	4.1-10.1	41%	41.0	4.8		
19	Elzen	DB	209	18	10:17	1.8	8.5	1.6	1-2	50%	0.3-1.3	23%	0.3-0.4	75%	0.4	-	0.4	0.7	0.4	1.3	0.6	0.4	-	0.4	0.1	0.1	2.8	1.0-2.8	36%	57.0	19.4		
20	Cunningham	LEI	208	7	13:10	4.0	14.1	0.7	1-3	33%	0-0.4	0%	2.6-3.4	76%	3.9	2.0	1.9	0.7	0.6	1.0	0.4	0.6	-	2.0	0.4	-	6.3	2.4-4.9	49%	-7.0	-5.5		
21	Stolk	FEY	208	21	24:43	6.7	13.0	1.3	2-6	33%	1.0-2.8	36%	1.0-1.2	83%	3.1	1.3	1.8	0.9	1.2	1.9	1.0	0.8	-	1.3	0.3	0.2	7.6	2.7-6.8	40%	-6.0	-3.5		
22	Freeman	DON	208	9	16:06	5.3	15.3	1.0	2-4	50%	0-0.7	0%	1.1-1.6	69%	3.6	1.1	2.4	1.9	0.7	1.6	0.9	0.7	-	1.8	0.2	0.2	6.1	2.2-4.1	54%	-41.0	-14.7		
23	Hollanders	LIM	208	23	21:02	7.4	17.1	0.8	3-6	50%	1.7-4.5	38%	0.4-0.6	67%	1.8	0.7	1.1	0.8	0.5	1.2	0.5	0.7	-	0.6	0.1	-	5.3	2.0-4.9	41%	-96.0	-9.5		
24	Wirjo	LIM	208	17	25:25	8.4	15.9	1.7	3-8	38%	1.5-4.4	34%	0.4-0.6	67%	2.5	0.5	2.0	1.9	1.3	2.5	1.2	1.1	-	1.1	0.2	0.2	9.0	3.0-7.2	42%	-41.0	-3.4		
25	Koehler	LEI	206	10	9:29	2.1	10.1	0.2	1-2	50%	0.5-1.1	45%	0.2-0.4	50%	1.1	0.7	0.4	0.5	0.1	0.9	0.4	0.5	-	0.4	-	-	2.8	0.8-2.1	38%	-21.0	-12.6		
26	Kanda-Kanyinda Injured	DB	205	2	5:58	-	-	0.5	0-2	0%	-	-	-	-	-	-	-	0.5	-	0.5	-	-	-	-	-	1.0	0.5-1.0	50%	-4.0	-22.1			
27	Gijsen	LIM	204	6	4:11	-	-	0.2	-	-	-	-	-	-	0.5	-	0.5	0.5	0.3	0.8	0.7	0.2	-	0.3	-	-	1.7	0.5-1.5	33%	-21.0	-30.1		
28	Markusse	AMS	201	21	19:48	4.5	10.8	0.8	2-5	40%	0.5-2.1	24%	0.5-1.0	50%	4.8	1.6	3.1	0.9	0.5	3.1	1.7	1.4	-	1.0	0.6	0.3	9.8	3.7-8.5	44%	-161.0	-18.8		
29	Hoogsteden	DH	200	9	5:29	1.4	11.2	0.3	1-1	100%	-	-	0.1-0.1	100%	0.7	-	0.7	0.3	-	0.6	0.2	0.3	-	0.6	-	-	2.7	1.0-1.4	71%	-55.0	-56.1		
30	Koopmans	ARI	199	23	28:28	4.6	7.7	1.8	2-5	40%	0.9-3.2	28%	0.7-0.9	78%	3.2	1.0	2.1	1.4	0.8	1.7	0.7	0.8	-	1.2	0.1	0.3	9.5	3.0-6.4	47%	-194.0	-14.1		
31	Versteeg	AMS	194	2	20:02	6.5	15.3	1.5	3-8	38%	0.5-3.5	14%	1.0-1.0	100%	2.0	0.5	1.5	0.5	1.0	2.0	1.5	0.5	-	2.0	-	-	10.5	4.0-6.0	67%	-43.0	-52.0		
32	Sedoc	DON	-	2	1:30	-	-	-	0-1	0%	-	-	-	-	0.5	0.5	-	0.5	-	-	-	-	-	-	-	-	-	-	6.0	54.0			



Guards

		InStat Index	Match es	Minutes	Points	/100 poss	Assists	Field goals		3-pt field goals	Free throws	REBOUNDS			Turnov	Steals	Fouls	FOULS				BLK against	Opp Points	Opponents field goals		+/-	Net rating		
								1-1	100%			Total	Offense	Defens e				Reason	Unreas on	Tech	Against			BLK	0			-1.0	100%
48	Brathwaite	LIM	-	1	4:19	2.0	28.6	-	1-1	100%	-	-	-	-	-	2.0	-	1.0	1.0	-	-	-	-	-	3.0	1.0-1.0	100%	-1.0	-
49	Polman	LEI	-	1	2:08	-	-	-	0-2	0%	0-1.0	0%	-	-	1.0	-	1.0	1.0	-	-	-	-	-	2.0	0	-1.0	0%	-7.0	-140.0



Guards

		Field goals		Pick'n'rolls Handler	Pick'n'rolls Roller	Pick'n'pops	Post ups	Isolations	Catch and shoots	Catch and drives	Screen off	Hand off	Transitions		Cuts	Putbacks
48	Brathwaite	LIM	1.0-1.0	100%	-	-	-	-	-	-	-	-	1.0-1.0	100%	-	-
49	Polman	LEI	0-2.0	0%	-	-	-	-	-	-	0-1.0	0%	-	-	-	-