

SUMMARY REPORT  
**SPAIN. LIGA ENDESA**  
2019–2020

# ADVANCE PRO BASKETBALL

**TEAMS RANKINGS**

POINTS ANALYSIS.....	2
FIELD GOALS ANALYSIS.....	3
ATTACKS ANALYSIS.....	4
DEFENSE ANALYSIS.....	5
REBOUNDS, TURNOVERS, STEALS, FOULS.....	6
FIELD GOALS PLAYTYPES IN ATTACK.....	7
FIELD GOALS PLAYTYPES IN DEFENSE.....	8

**PLAYERS RANKINGS**

POINTS, ASSISTS, ATTACKS.....	9
REBOUNDS, TURNOVERS, FOULS, DEFENSE.....	10
FIELD GOALS PLAYTYPES.....	11

**COMPARABLE TABLE**

BOXSCORE. CENTERS.....	12
BOXSCORE. FORWARDS.....	14
BOXSCORE. GUARDS.....	16
FG PLAYTYPES. CENTERS.....	19
FG PLAYTYPES. FORWARDS.....	21
FG PLAYTYPES. GUARDS.....	23



### InStat Index

	InStat Index	Matches played
1 Real Madrid	266	23
2 FC Barcelona	266	23
3 Baskonia	263	23
4 Valencia	263	23
5 Iberostar Tenerife	261	22
6 Zaragoza	260	23
7 Unicaja	260	23
8 Andorra	260	23
9 Gran Canaria	259	22
10 Burgos	258	23
11 Joventut	257	23
12 Murcia	257	22
13 Bilbao	256	23
14 Estudiantes	256	23
15 Manresa	256	23
16 Fuenlabrada	256	22
17 Obradoiro CAB	255	23
18 Real Betis	254	23
AVERAGE	259	23



### Points

		/100 poss
1 FC Barcelona	88.74	104.45
2 Real Madrid	86.43	101.53
3 Valencia	84.78	103.23
4 Joventut	84.17	98.68
5 Baskonia	83.74	101.16
6 Zaragoza	83.09	98.56
7 Bilbao	82.87	97.24
8 Iberostar Tenerife	81.91	100.00
9 Andorra	81.09	96.39
10 Gran Canaria	80.68	96.62
11 Murcia	80.41	95.00
12 Manresa	80.13	95.14
13 Burgos	80.04	97.41
14 Obradoiro CAB	79.65	95.52
15 Unicaja	79.26	95.64
16 Fuenlabrada	78.50	90.80
17 Real Betis	77.70	94.10
18 Estudiantes	74.04	88.24
AVERAGE	81.51	97.19



### Opp Points

		/100 poss
1 Real Madrid	76.43	89.82
2 Valencia	78.00	96.09
3 Unicaja	78.17	94.73
4 Zaragoza	78.70	93.74
5 Iberostar Tenerife	78.91	96.72
6 Andorra	78.91	93.99
7 FC Barcelona	80.30	93.84
8 Estudiantes	81.00	96.58
9 Gran Canaria	81.23	98.46
10 Burgos	81.48	97.25
11 Baskonia	82.00	100.16
12 Real Betis	82.17	98.54
13 Bilbao	82.96	96.86
14 Murcia	83.86	98.60
15 Manresa	84.22	99.19
16 Fuenlabrada	85.68	101.46
17 Obradoiro CAB	85.74	103.09
18 Joventut	87.83	101.00
AVERAGE	81.53	97.23



### +/-

		/100 poss
1 Real Madrid	10.0	11.7
2 FC Barcelona	8.4	10.6
3 Valencia	6.8	7.1
4 Zaragoza	4.4	4.8
5 Iberostar Tenerife	3.0	3.3
6 Andorra	2.2	2.4
7 Baskonia	1.7	1.0
8 Unicaja	1.1	0.9
9 Bilbao	-0.1	0.4
10 Gran Canaria	-0.6	-1.8
11 Burgos	-1.4	0.2
12 Murcia	-3.5	-3.6
13 Joventut	-3.7	-2.3
14 Manresa	-4.1	-4.0
15 Real Betis	-4.5	-4.4
16 Obradoiro CAB	-6.1	-7.6
17 Estudiantes	-7.0	-8.3
18 Fuenlabrada	-7.2	-10.7



### Points off turnovers

1 Andorra	12.70
2 Estudiantes	12.30
3 Unicaja	12.26
4 Baskonia	12.13
5 FC Barcelona	11.96
6 Burgos	11.35
7 Real Madrid	11.30
8 Zaragoza	10.83
9 Valencia	10.78
10 Iberostar Tenerife	10.73
11 Manresa	10.61
12 Murcia	10.50
13 Joventut	10.35
14 Gran Canaria	10.09
15 Obradoiro CAB	9.70
16 Real Betis	9.52
17 Fuenlabrada	9.23
18 Bilbao	9.13
AVERAGE	10.86



### Paint points

		Share
1 FC Barcelona	38.43	43.3%
2 Baskonia	37.91	45.3%
3 Joventut	37.30	44.3%
4 Manresa	36.70	45.8%
5 Zaragoza	36.70	44.2%
6 Iberostar Tenerife	35.36	43.2%
7 Valencia	35.13	41.4%
8 Bilbao	34.70	41.9%
9 Real Madrid	34.35	39.7%
10 Fuenlabrada	33.64	42.9%
11 Andorra	32.00	39.5%
12 Murcia	31.73	39.5%
13 Gran Canaria	31.73	39.3%
14 Obradoiro CAB	31.39	39.4%
15 Real Betis	30.52	39.3%
16 Burgos	29.83	37.3%
17 Unicaja	29.30	37.0%
18 Estudiantes	28.00	37.8%
AVERAGE	33.60	41.2%



### Second chance points

		Share
1 Valencia	9.48	11.2%
2 FC Barcelona	9.39	10.6%
3 Murcia	9.18	11.4%
4 Baskonia	8.87	10.6%
5 Obradoiro CAB	8.78	11.0%
6 Burgos	8.74	10.9%
7 Gran Canaria	8.73	10.8%
8 Unicaja	8.65	10.9%
9 Bilbao	8.26	10.0%
10 Estudiantes	8.04	10.9%
11 Real Madrid	7.91	9.2%
12 Zaragoza	7.78	9.4%
13 Joventut	7.65	9.1%
14 Iberostar Tenerife	7.18	8.8%
15 Manresa	7.04	8.8%
16 Andorra	6.96	8.6%
17 Fuenlabrada	6.41	8.2%
18 Real Betis	6.35	8.2%
AVERAGE	8.08	9.9%



### Starting lineup points

		Share
1 Baskonia	54.70	65.3%
2 Joventut	53.09	63.1%
3 FC Barcelona	52.43	59.1%
4 Iberostar Tenerife	52.23	63.8%
5 Murcia	51.45	64.0%
6 Burgos	48.78	60.9%
7 Gran Canaria	48.64	60.3%
8 Manresa	48.57	60.6%
9 Bilbao	48.48	58.5%
10 Real Madrid	48.48	56.1%
11 Obradoiro CAB	47.61	59.8%
12 Unicaja	45.52	57.4%
13 Fuenlabrada	45.14	57.5%
14 Andorra	44.61	55.0%
15 Real Betis	44.30	57.0%
16 Zaragoza	43.78	52.7%
17 Estudiantes	42.22	57.0%
18 Valencia	39.09	46.1%
AVERAGE	47.73	58.6%



### Bench points

		Share
1 Valencia	45.70	53.9%
2 Zaragoza	39.30	47.3%
3 Real Madrid	37.96	43.9%
4 Andorra	36.48	45.0%
5 FC Barcelona	36.30	40.9%
6 Bilbao	34.39	41.5%
7 Unicaja	33.74	42.6%
8 Real Betis	33.39	43.0%
9 Fuenlabrada	33.36	42.5%
10 Gran Canaria	32.05	39.7%
11 Obradoiro CAB	32.04	40.2%
12 Estudiantes	31.83	43.0%
13 Manresa	31.57	39.4%
14 Burgos	31.26	39.1%
15 Joventut	31.09	36.9%
16 Iberostar Tenerife	29.68	36.2%
17 Baskonia	29.04	34.7%
18 Murcia	28.95	36.0%
AVERAGE	33.79	41.4%

### Field goals

1	FC Barcelona	30.5 – 62.3	49.0%
2	Iberostar Tenerife	29.6 – 61.7	48.0%
3	Valencia	29.9 – 63.1	47.4%
4	Baskonia	30.4 – 64.1	47.4%
5	Real Madrid	30.1 – 64.0	47.0%
6	Zaragoza	30.4 – 65.8	46.2%
7	Bilbao	30.1 – 65.1	46.2%
8	Andorra	28.7 – 62.8	45.7%
9	Gran Canaria	29.1 – 63.7	45.7%
10	Manresa	29.4 – 64.7	45.4%
11	Joventut	29.6 – 66.1	44.8%
12	Real Betis	28.3 – 63.1	44.8%
13	Burgos	28.8 – 64.6	44.6%
14	Obradoiro CAB	28.4 – 64.1	44.3%
15	Fuenlabrada	28.0 – 63.2	44.3%
16	Murcia	28.7 – 66.7	43.0%
17	Unicaja	27.0 – 62.9	42.9%
18	Estudiantes	27.3 – 67.6	40.4%
AVERAGE		29.1 – 64.2	45.3%

### 3-pt field goals

1	Real Madrid	10.9 – 28.0	38.9%
2	Valencia	9.9 – 26.0	38.1%
3	Real Betis	9.6 – 25.2	38.1%
4	Burgos	10.8 – 29.0	37.2%
5	Zaragoza	8.5 – 23.2	36.6%
6	Gran Canaria	10.2 – 28.1	36.3%
7	Obradoiro CAB	10.5 – 29.4	35.7%
8	Bilbao	9.0 – 25.2	35.7%
9	Murcia	9.9 – 28.2	35.1%
10	Iberostar Tenerife	8.8 – 25.3	34.8%
11	FC Barcelona	8.1 – 23.4	34.6%
12	Unicaja	9.2 – 26.8	34.3%
13	Andorra	8.2 – 24.1	34.0%
14	Baskonia	8.6 – 25.3	34.0%
15	Manresa	7.9 – 23.6	33.5%
16	Fuenlabrada	8.0 – 23.9	33.5%
17	Joventut	8.5 – 25.8	32.9%
18	Estudiantes	8.8 – 26.9	32.7%
AVERAGE		9.2 – 26.0	35.4%

### 2-pt field goals

1	FC Barcelona	22.4 – 38.9	57.6%
2	Iberostar Tenerife	20.7 – 36.5	56.7%
3	Baskonia	21.8 – 38.8	56.2%
4	Valencia	20.0 – 37.1	53.9%
5	Real Madrid	19.2 – 35.9	53.5%
6	Bilbao	21.1 – 39.9	52.9%
7	Andorra	20.4 – 38.7	52.7%
8	Gran Canaria	18.8 – 35.7	52.7%
9	Joventut	21.1 – 40.3	52.4%
10	Manresa	21.5 – 41.1	52.3%
11	Zaragoza	21.9 – 42.7	51.3%
12	Obradoiro CAB	17.8 – 34.7	51.3%
13	Fuenlabrada	20.0 – 39.3	50.9%
14	Burgos	18.0 – 35.6	50.6%
15	Unicaja	17.9 – 36.1	49.6%
16	Real Betis	18.7 – 38.0	49.2%
17	Murcia	18.8 – 38.5	48.8%
18	Estudiantes	18.5 – 40.7	45.5%
AVERAGE		19.9 – 38.2	52.1%

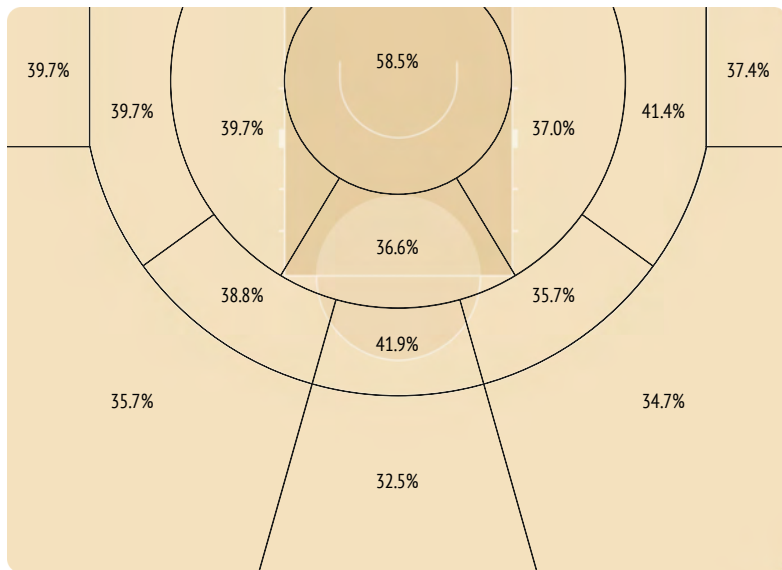
### Free throws

1	Valencia	15.1 – 18.6	81.2%
2	Joventut	16.6 – 20.7	80.2%
3	Iberostar Tenerife	14.0 – 17.5	80.0%
4	FC Barcelona	19.6 – 25.0	78.4%
5	Unicaja	16.0 – 20.4	78.4%
6	Real Madrid	15.4 – 19.7	78.2%
7	Obradoiro CAB	12.4 – 16.2	76.5%
8	Bilbao	13.6 – 17.9	76.0%
9	Estudiantes	10.7 – 14.2	75.4%
10	Murcia	13.1 – 17.4	75.3%
11	Gran Canaria	12.4 – 16.7	74.3%
12	Real Betis	11.5 – 15.5	74.2%
13	Baskonia	14.4 – 19.4	74.2%
14	Manresa	13.5 – 18.3	73.8%
15	Andorra	15.6 – 21.3	73.2%
16	Zaragoza	13.8 – 19.1	72.3%
17	Fuenlabrada	14.6 – 21.5	67.9%
18	Burgos	11.6 – 18.0	64.4%
AVERAGE		14.1 – 18.7	75.4%

### Assists

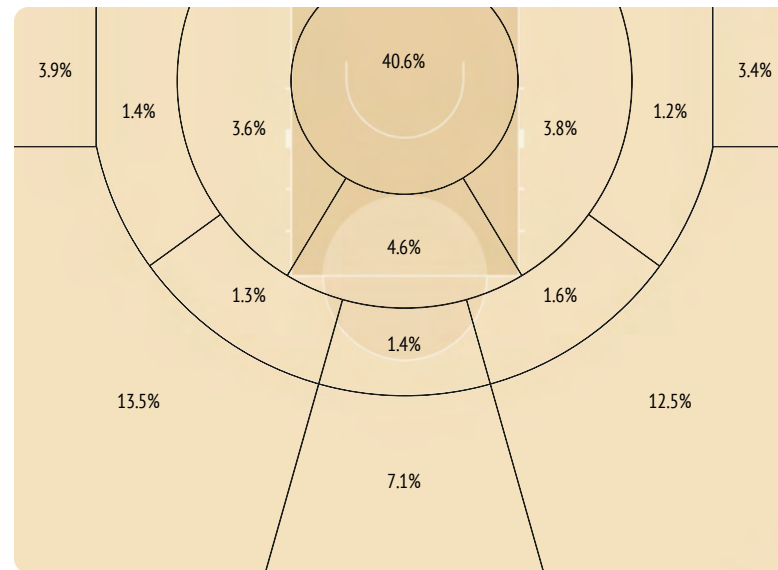
1	Manresa	20.4
2	Iberostar Tenerife	20.3
3	Joventut	19.6
4	Real Madrid	19.3
5	FC Barcelona	18.7
6	Gran Canaria	18.6
7	Zaragoza	18.3
8	Bilbao	17.7
9	Obradoiro CAB	17.7
10	Burgos	17.7
11	Unicaja	17.1
12	Valencia	17.0
13	Fuenlabrada	16.9
14	Andorra	16.4
15	Estudiantes	16.4
16	Baskonia	16.1
17	Real Betis	15.6
18	Murcia	14.4
AVERAGE		17.7

### Field goals - zones efficiency



100% – %FG - LEAGUE AVERAGE

### Field goals - share by zones



100% – %FG - LEAGUE AVERAGE



## Positional attacks

			Points	Turnovers	
1	Bilbao	41.1 – 78.4	52.4%	<b>63.7</b>	12.6
2	Real Madrid	40.7 – 76.0	53.6%	<b>63.1</b>	12.0
3	Obradoiro CAB	39.9 – 77.4	51.6%	<b>63.0</b>	12.0
4	Valencia	42.6 – 74.8	57.0%	<b>62.7</b>	10.2
5	Gran Canaria	40.6 – 77.0	52.7%	<b>62.3</b>	11.4
6	Iberostar Tenerife	41.2 – 76.3	54.0%	<b>62.3</b>	12.1
7	Burgos	40.3 – 75.5	53.4%	<b>62.0</b>	10.5
8	Joventut	41.1 – 78.0	52.7%	<b>62.0</b>	11.4
9	FC Barcelona	43.0 – 75.5	57.0%	<b>61.6</b>	11.8
10	Murcia	39.5 – 76.6	51.6%	<b>61.1</b>	11.6
11	Manresa	40.6 – 77.3	52.5%	<b>60.7</b>	11.7
12	Real Betis	38.4 – 75.8	50.7%	<b>60.5</b>	12.3
13	Baskonia	40.0 – 74.0	54.1%	<b>60.3</b>	12.0
14	Zaragoza	39.9 – 75.3	53.0%	<b>60.0</b>	11.5
15	Fuenlabrada	40.8 – 77.5	52.6%	<b>57.4</b>	12.0
16	Unicaja	39.0 – 75.4	51.7%	<b>56.6</b>	11.6
17	Andorra	39.7 – 75.6	52.5%	<b>56.1</b>	12.2
18	Estudiantes	36.2 – 75.8	47.8%	<b>55.6</b>	10.7
AVERAGE		40.2 – 76.2	52.8%	<b>60.6</b>	11.6



## Transitions

			Points	Turnovers	
1	Zaragoza	6.2 – 9.0	68.9%	<b>9.3</b>	0.8
2	Andorra	5.8 – 8.6	67.4%	<b>9.3</b>	1.0
3	Baskonia	6.4 – 8.7	73.6%	<b>9.0</b>	1.0
4	Real Madrid	5.9 – 9.1	64.8%	<b>7.9</b>	1.0
5	Estudiantes	5.1 – 8.1	63.0%	<b>7.8</b>	0.8
6	FC Barcelona	6.1 – 9.5	64.2%	<b>7.5</b>	1.2
7	Valencia	4.8 – 7.3	65.8%	<b>6.8</b>	1.1
8	Unicaja	4.7 – 7.5	62.7%	<b>6.7</b>	1.2
9	Fuenlabrada	5.0 – 9.0	55.6%	<b>6.6</b>	1.6
10	Burgos	4.5 – 6.7	67.2%	<b>6.4</b>	1.0
11	Murcia	4.5 – 8.1	55.6%	<b>6.1</b>	1.1
12	Manresa	4.7 – 7.0	67.1%	<b>5.9</b>	1.0
13	Gran Canaria	4.3 – 6.6	65.2%	<b>5.9</b>	0.7
14	Real Betis	4.3 – 6.7	64.2%	<b>5.7</b>	0.9
15	Iberostar Tenerife	3.8 – 5.6	67.9%	<b>5.6</b>	0.6
16	Bilbao	4.5 – 6.8	66.2%	<b>5.6</b>	1.1
17	Joventut	4.4 – 7.3	60.3%	<b>5.6</b>	1.3
18	Obradoiro CAB	3.4 – 6.0	56.7%	<b>4.3</b>	1.0
AVERAGE		4.9 – 7.6	64.5%	<b>6.8</b>	1.0



## Baseline combinations

			Points	Turnovers	
1	Gran Canaria	2.1 – 4.8	43.8%	<b>4.0</b>	0.9
2	Baskonia	2.0 – 3.7	54.1%	<b>3.7</b>	0.8
3	Bilbao	1.9 – 3.7	51.4%	<b>3.5</b>	0.6
4	FC Barcelona	2.0 – 3.4	58.8%	<b>3.4</b>	0.5
5	Andorra	1.9 – 3.3	57.6%	<b>3.1</b>	0.2
6	Zaragoza	1.9 – 3.6	52.8%	<b>3.1</b>	0.7
7	Iberostar Tenerife	1.8 – 3.4	52.9%	<b>3.1</b>	0.7
8	Joventut	1.7 – 3.2	53.1%	<b>3.0</b>	0.4
9	Real Betis	1.8 – 4.0	45.0%	<b>3.0</b>	0.9
10	Unicaja	1.8 – 3.7	48.6%	<b>2.9</b>	0.4
11	Obradoiro CAB	1.9 – 3.5	54.3%	<b>2.9</b>	0.5
12	Burgos	1.5 – 3.2	46.9%	<b>2.9</b>	0.7
13	Valencia	2.1 – 3.5	60.0%	<b>2.7</b>	0.3
14	Murcia	1.5 – 3.4	44.1%	<b>2.6</b>	0.4
15	Manresa	1.7 – 3.1	54.8%	<b>2.6</b>	0.1
16	Fuenlabrada	1.5 – 2.8	53.6%	<b>2.4</b>	0.5
17	Estudiantes	1.1 – 2.9	37.9%	<b>2.2</b>	0.3
18	Real Madrid	1.6 – 3.1	51.6%	<b>1.9</b>	0.5
AVERAGE		1.8 – 3.5	51.4%	<b>2.9</b>	0.5



## Sideline combinations

			Points	Turnovers	
1	Valencia	3.6 – 6.3	57.1%	<b>6.6</b>	0.7
2	FC Barcelona	3.3 – 6.1	54.1%	<b>6.0</b>	0.9
3	Fuenlabrada	3.4 – 6.8	50.0%	<b>5.7</b>	1.1
4	Real Betis	3.3 – 6.7	49.3%	<b>5.3</b>	0.9
5	Unicaja	3.4 – 6.2	54.8%	<b>5.2</b>	0.9
6	Burgos	2.9 – 5.6	51.8%	<b>5.1</b>	0.8
7	Obradoiro CAB	2.8 – 6.4	43.8%	<b>5.0</b>	0.8
8	Bilbao	2.6 – 5.1	51.0%	<b>5.0</b>	0.8
9	Gran Canaria	3.1 – 6.4	48.4%	<b>5.0</b>	0.9
10	Real Madrid	3.0 – 5.7	52.6%	<b>4.9</b>	0.8
11	Baskonia	3.0 – 5.6	53.6%	<b>4.8</b>	0.7
12	Estudiantes	3.0 – 6.7	44.8%	<b>4.7</b>	0.7
13	Iberostar Tenerife	2.7 – 5.3	50.9%	<b>4.4</b>	1.0
14	Zaragoza	2.7 – 5.6	48.2%	<b>4.3</b>	0.8
15	Murcia	2.9 – 6.4	45.3%	<b>4.1</b>	1.1
16	Manresa	2.7 – 5.8	46.6%	<b>4.1</b>	0.8
17	Andorra	2.7 – 6.4	42.2%	<b>3.8</b>	1.4
18	Joventut	2.1 – 5.1	41.2%	<b>2.6</b>	0.6
AVERAGE		2.9 – 6.0	48.3%	<b>4.8</b>	0.9



## Uncontested FG

1	Gran Canaria	6.7 – 15.1	<b>44.4%</b>
2	Real Madrid	6.2 – 14.3	<b>43.4%</b>
3	Burgos	5.8 – 13.5	<b>43.0%</b>
4	Valencia	7.4 – 17.7	<b>41.8%</b>
5	Real Betis	5.6 – 13.5	<b>41.5%</b>
6	Iberostar Tenerife	6.4 – 15.5	<b>41.3%</b>
7	Zaragoza	4.7 – 11.4	<b>41.2%</b>
8	Murcia	6.0 – 15.0	<b>40.0%</b>
9	Unicaja	6.8 – 17.2	<b>39.5%</b>
10	Andorra	4.7 – 12.0	<b>39.2%</b>
11	Fuenlabrada	4.6 – 11.8	<b>39.0%</b>
12	Manresa	5.6 – 14.4	<b>38.9%</b>
13	Estudiantes	6.1 – 15.7	<b>38.9%</b>
14	Baskonia	5.0 – 13.2	<b>37.9%</b>
15	Obradoiro CAB	4.3 – 11.4	<b>37.7%</b>
16	Bilbao	4.4 – 11.8	<b>37.3%</b>
17	FC Barcelona	3.7 – 10.0	<b>37.0%</b>
18	Joventut	3.4 – 11.0	<b>30.9%</b>
AVERAGE		5.4 – 13.6	<b>39.7%</b>



## Contested FG

1	FC Barcelona	24.6 – 50.0	<b>49.2%</b>
2	Valencia	21.0 – 44.0	<b>47.7%</b>
3	Baskonia	23.3 – 48.8	<b>47.7%</b>
4	Iberostar Tenerife	21.0 – 44.1	<b>47.6%</b>
5	Real Madrid	22.2 – 47.9	<b>46.3%</b>
6	Bilbao	23.6 – 51.2	<b>46.1%</b>
7	Joventut	24.3 – 53.2	<b>45.7%</b>
8	Manresa	22.2 – 48.7	<b>45.6%</b>
9	Andorra	22.4 – 49.3	<b>45.4%</b>
10	Zaragoza	23.7 – 52.4	<b>45.2%</b>
11	Gran Canaria	20.9 – 47.2	<b>44.3%</b>
12	Obradoiro CAB	22.1 – 50.7	<b>43.6%</b>
13	Fuenlabrada	21.6 – 49.6	<b>43.5%</b>
14	Real Betis	20.7 – 47.7	<b>43.4%</b>
15	Burgos	21.5 – 49.7	<b>43.3%</b>
16	Unicaja	19.0 – 44.4	<b>42.8%</b>
17	Murcia	21.5 – 50.5	<b>42.6%</b>
18	Estudiantes	20.0 – 50.7	<b>39.4%</b>
AVERAGE		22.0 – 48.9	<b>45.0%</b>

### Opp Points

	Points	/100 poss
1 Real Madrid	76.43	89.82
2 Valencia	78.00	96.09
3 Unicaja	78.17	94.73
4 Zaragoza	78.70	93.74
5 Iberostar Tenerife	78.91	96.72
6 Andorra	78.91	93.99
7 FC Barcelona	80.30	93.84
8 Estudiantes	81.00	96.58
9 Gran Canaria	81.23	98.46
10 Burgos	81.48	97.25
11 Baskonia	82.00	100.16
12 Real Betis	82.17	98.54
13 Bilbao	82.96	96.86
14 Murcia	83.86	98.60
15 Manresa	84.22	99.19
16 Fuenlabrada	85.68	101.46
17 Obradoiro CAB	85.74	103.09
18 Joventut	87.83	101.00
AVERAGE	81.53	97.23

### Opponents field goals

1 Bilbao	28.5	-69.4	41.1%
2 Real Madrid	29.4	-69.7	42.2%
3 Zaragoza	28.3	-66.3	42.7%
4 Valencia	28.7	-64.4	44.6%
5 Andorra	28.6	-63.4	45.1%
6 Burgos	29.0	-63.9	45.4%
7 Unicaja	28.3	-62.2	45.5%
8 Murcia	28.5	-62.4	45.7%
9 Manresa	29.8	-65.1	45.8%
10 Iberostar Tenerife	28.4	-61.8	46.0%
11 Baskonia	28.3	-61.4	46.1%
12 Real Betis	29.2	-63.4	46.1%
13 Fuenlabrada	29.4	-63.7	46.2%
14 FC Barcelona	29.6	-63.8	46.4%
15 Gran Canaria	29.0	-62.4	46.5%
16 Estudiantes	28.7	-61.0	47.0%
17 Joventut	31.3	-66.2	47.3%
18 Obradoiro CAB	31.3	-65.0	48.2%
AVERAGE	29.1	-64.2	45.3%

### Opp 3-pt field goals

1 Real Madrid	8.0	-25.2	31.7%
2 Unicaja	8.4	-25.8	32.6%
3 Zaragoza	9.7	-29.2	33.2%
4 Estudiantes	8.0	-23.9	33.5%
5 Andorra	8.5	-25.0	34.0%
6 Burgos	9.9	-28.8	34.4%
7 Obradoiro CAB	7.5	-21.7	34.6%
8 Burgos	9.4	-26.9	34.9%
9 FC Barcelona	9.6	-27.1	35.4%
10 Fuenlabrada	9.9	-27.4	36.1%
11 Iberostar Tenerife	8.9	-24.5	36.3%
12 Gran Canaria	8.2	-22.6	36.3%
13 Valencia	10.0	-27.4	36.5%
14 Manresa	9.1	-24.6	37.0%
15 Murcia	9.3	-24.9	37.3%
16 Real Betis	11.2	-30.0	37.3%
17 Joventut	10.2	-26.7	38.2%
18 Baskonia	9.6	-25.1	38.2%
AVERAGE	9.2	-25.9	35.5%

### Opp Free throws

1 Real Madrid	9.7	-13.9	69.8%
2 Murcia	17.6	-24.6	71.5%
3 Estudiantes	15.6	-21.8	71.6%
4 Zaragoza	12.4	-17.2	72.1%
5 Unicaja	13.1	-17.8	73.6%
6 Real Betis	12.7	-17.2	73.8%
7 Andorra	13.2	-17.5	75.4%
8 Obradoiro CAB	15.7	-20.8	75.5%
9 Iberostar Tenerife	13.3	-17.6	75.6%
10 Valencia	10.7	-14.1	75.9%
11 Joventut	15.1	-19.9	75.9%
12 Fuenlabrada	17.1	-22.4	76.3%
13 Burgos	14.0	-18.3	76.5%
14 FC Barcelona	11.6	-15.0	77.3%
15 Manresa	15.5	-20.0	77.5%
16 Baskonia	15.8	-20.3	77.8%
17 Bilbao	16.0	-20.4	78.4%
18 Gran Canaria	15.1	-19.1	79.1%
AVERAGE	14.1	-18.8	75.0%

### Opp Assists

1 Gran Canaria	14.9
2 Unicaja	16.4
3 Andorra	16.5
4 Real Madrid	16.8
5 Zaragoza	17.1
6 Bilbao	17.2
7 Obradoiro CAB	17.3
8 Manresa	17.4
9 Baskonia	17.7
10 FC Barcelona	17.7
11 Iberostar Tenerife	17.7
12 Fuenlabrada	17.8
13 Burgos	18.1
14 Valencia	18.4
15 Burgos	18.4
16 Estudiantes	18.8
17 Joventut	19.0
18 Real Betis	20.7
AVERAGE	17.7

### Opp Points off turnovers

1 Valencia	8.61
2 Murcia	9.82
3 Iberostar Tenerife	9.86
4 Estudiantes	10.13
5 Unicaja	10.17
6 Andorra	10.43
7 Joventut	10.52
8 Gran Canaria	10.55
9 Burgos	10.87
10 Baskonia	11.00
11 Real Madrid	11.22
12 Obradoiro CAB	11.26
13 FC Barcelona	11.57
14 Real Betis	11.70
15 Manresa	11.78
16 Bilbao	11.78
17 Fuenlabrada	11.91
18 Zaragoza	12.35
AVERAGE	10.86

### Opp Paint points

1 Real Betis	29.91
2 Zaragoza	30.35
3 Baskonia	30.43
4 Bilbao	30.52
5 FC Barcelona	31.30
6 Valencia	32.26
7 Iberostar Tenerife	33.00
8 Fuenlabrada	33.55
9 Real Madrid	33.57
10 Murcia	33.73
11 Burgos	33.83
12 Andorra	33.91
13 Unicaja	34.00
14 Gran Canaria	34.09
15 Manresa	35.65
16 Estudiantes	36.00
17 Joventut	36.87
18 Obradoiro CAB	41.83
AVERAGE	33.60

### Opp Second chance points

1 Gran Canaria	5.95
2 Iberostar Tenerife	6.86
3 Joventut	7.35
4 Real Madrid	7.61
5 Manresa	7.78
6 Fuenlabrada	7.82
7 Murcia	8.05
8 Estudiantes	8.09
9 FC Barcelona	8.13
10 Baskonia	8.13
11 Zaragoza	8.17
12 Real Betis	8.17
13 Burgos	8.26
14 Valencia	8.39
15 Unicaja	8.48
16 Bilbao	9.00
17 Andorra	9.48
18 Obradoiro CAB	9.57
AVERAGE	8.07

### Opp Uncontested FG

1 Obradoiro CAB	3.4	-9.6	35.4%
2 Unicaja	5.1	-14.3	35.7%
3 Valencia	6.1	-17.0	35.9%
4 Real Madrid	5.1	-14.0	36.4%
5 Manresa	4.4	-12.1	36.4%
6 Bilbao	6.7	-17.9	37.4%
7 Andorra	4.8	-12.7	37.8%
8 Burgos	5.4	-14.0	38.6%
9 Murcia	4.9	-12.6	38.9%
10 FC Barcelona	5.5	-14.0	39.3%
11 Iberostar Tenerife	5.6	-13.9	40.3%
12 Real Betis	7.2	-17.0	42.4%
13 Zaragoza	6.3	-14.8	42.6%
14 Estudiantes	5.3	-12.2	43.4%
15 Fuenlabrada	5.7	-13.1	43.5%
16 Baskonia	5.6	-12.8	43.8%
17 Joventut	5.3	-11.5	46.1%
18 Gran Canaria	4.9	-10.5	46.7%
AVERAGE	5.4	-13.6	39.7%

### Opp Contested FG

1 Bilbao	20.1	-49.8	40.4%
2 Zaragoza	20.4	-49.8	41.0%
3 Real Madrid	22.4	-53.9	41.6%
4 Fuenlabrada	21.2	-48.1	44.1%
5 Gran Canaria	22.0	-49.7	44.3%
6 Andorra	22.1	-49.0	45.1%
7 Baskonia	21.5	-47.4	45.4%
8 Burgos	21.8	-47.9	45.5%
9 Real Betis	20.5	-45.0	45.6%
10 Estudiantes	21.4	-46.9	45.6%
11 Joventut	24.2	-53.0	45.7%
12 Iberostar Tenerife	21.3	-46.4	45.9%
13 Murcia	22.1	-48.2	45.9%
14 Manresa	23.5	-51.0	46.1%
15 Valencia	21.4	-46.3	46.2%
16 FC Barcelona	22.4	-48.2	46.5%
17 Unicaja	21.6	-46.3	46.7%
18 Obradoiro CAB	25.5	-53.0	48.1%
AVERAGE	22.0	-48.9	45.0%

## Rebounds

1	FC Barcelona	33.13	54.1%
2	Baskonia	32.52	53.3%
3	Valencia	32.83	51.9%
4	Real Madrid	35.70	51.8%
5	Gran Canaria	32.64	51.3%
6	Zaragoza	34.96	51.2%
7	Iberostar Tenerife	29.77	50.7%
8	Andorra	32.00	50.3%
9	Unicaja	32.09	50.0%
10	Burgos	33.04	49.9%
11	Manresa	32.65	49.8%
12	Joventut	32.65	49.8%
13	Murcia	32.41	49.5%
14	Bilbao	33.52	48.8%
15	Real Betis	30.57	48.8%
16	Fuenlabrada	31.00	48.0%
17	Estudiantes	30.57	45.7%
18	Obradoiro CAB	28.91	45.4%
AVERAGE		32.28	50.0%

## Offensive rebounds

1	Baskonia	10.48	34.2%
2	FC Barcelona	9.91	33.4%
3	Valencia	9.96	32.4%
4	Murcia	10.64	31.1%
5	Zaragoza	10.26	31.1%
6	Unicaja	10.09	30.7%
7	Burgos	10.09	30.1%
8	Andorra	9.30	29.9%
9	Manresa	9.78	29.5%
10	Gran Canaria	9.45	29.4%
11	Iberostar Tenerife	8.50	29.3%
12	Joventut	9.65	28.8%
13	Bilbao	9.04	28.0%
14	Real Madrid	8.70	27.9%
15	Real Betis	8.61	27.2%
16	Obradoiro CAB	8.83	27.1%
17	Fuenlabrada	8.95	26.9%
18	Estudiantes	9.43	26.0%
AVERAGE		9.54	29.5%

## Defensive rebounds

1	Gran Canaria	23.18	74.1%
2	FC Barcelona	23.22	73.2%
3	Baskonia	22.04	72.6%
4	Joventut	23.00	71.9%
5	Real Madrid	27.00	71.6%
6	Iberostar Tenerife	21.27	71.2%
7	Manresa	22.87	70.9%
8	Real Betis	21.96	70.7%
9	Valencia	22.87	70.7%
10	Fuenlabrada	22.05	70.6%
11	Burgos	22.96	70.6%
12	Unicaja	22.00	70.3%
13	Zaragoza	24.70	70.2%
14	Andorra	22.70	70.1%
15	Murcia	21.77	69.6%
16	Estudiantes	21.13	68.7%
17	Bilbao	24.48	66.9%
18	Obradoiro CAB	20.09	64.6%
AVERAGE		22.7	70.5%

## Turnovers

1	Fuenlabrada	13.64
2	Bilbao	13.61
3	Andorra	13.43
4	FC Barcelona	13.26
5	Real Betis	13.26
6	Baskonia	13.13
7	Obradoiro CAB	13.04
8	Iberostar Tenerife	13.00
9	Real Madrid	12.96
10	Unicaja	12.91
11	Manresa	12.87
12	Murcia	12.82
13	Joventut	12.70
14	Zaragoza	12.39
15	Gran Canaria	12.14
16	Burgos	11.78
17	Estudiantes	11.70
18	Valencia	11.52
AVERAGE		12.79

## Steals

1	FC Barcelona	8.48
2	Estudiantes	8.35
3	Baskonia	7.78
4	Unicaja	7.17
5	Valencia	7.09
6	Andorra	7.04
7	Fuenlabrada	6.55
8	Murcia	6.55
9	Real Betis	6.48
10	Burgos	6.35
11	Obradoiro CAB	6.26
12	Real Madrid	6.17
13	Iberostar Tenerife	6.09
14	Zaragoza	6.00
15	Joventut	5.83
16	Gran Canaria	5.64
17	Manresa	5.09
18	Bilbao	4.96
AVERAGE		6.55

## Fouls

On shots		
1	Murcia	23.18
2	Estudiantes	22.17
3	Fuenlabrada	21.41
4	Bilbao	21.22
5	Gran Canaria	20.82
6	Manresa	20.52
7	Burgos	20.48
8	Obradoiro CAB	20.48
9	Baskonia	20.43
10	Joventut	20.39
11	Real Betis	20.00
12	Andorra	19.61
13	Unicaja	19.57
14	FC Barcelona	19.35
15	Iberostar Tenerife	19.23
16	Zaragoza	19.17
17	Real Madrid	17.65
18	Valencia	16.43
AVERAGE		20.12

## Good fouls

1	Real Betis	9.52	47.5%
2	Manresa	9.57	46.8%
3	Obradoiro CAB	9.35	45.9%
4	Fuenlabrada	9.77	45.8%
5	Valencia	7.35	45.1%
6	Zaragoza	8.52	44.3%
7	Andorra	8.61	43.9%
8	Gran Canaria	9.05	43.8%
9	Joventut	8.91	43.6%
10	Bilbao	9.22	43.4%
11	Unicaja	8.35	42.9%
12	Estudiantes	9.48	42.8%
13	Iberostar Tenerife	8.18	42.7%
14	Baskonia	8.74	42.6%
15	Real Madrid	7.48	42.4%
16	Murcia	9.64	41.4%
17	Burgos	7.70	37.6%
18	FC Barcelona	7.09	36.6%
AVERAGE		8.70	43.3%

## Bad fouls

1	FC Barcelona	11.96	61.9%
2	Burgos	12.57	61.5%
3	Real Madrid	9.91	55.9%
4	Iberostar Tenerife	10.73	55.7%
5	Murcia	12.86	55.6%
6	Unicaja	10.87	55.6%
7	Bilbao	11.74	55.2%
8	Gran Canaria	11.41	54.8%
9	Estudiantes	12.09	54.5%
10	Baskonia	11.09	54.4%
11	Zaragoza	10.35	54.2%
12	Andorra	10.52	53.6%
13	Joventut	10.78	52.9%
14	Obradoiro CAB	10.83	52.7%
15	Fuenlabrada	11.23	52.3%
16	Valencia	8.48	51.8%
17	Manresa	10.52	51.2%
18	Real Betis	9.96	50.0%
AVERAGE		10.99	54.7%

## Technical fouls

1	Joventut	0.78
2	Murcia	0.73
3	Burgos	0.48
4	Zaragoza	0.43
5	Fuenlabrada	0.38
6	Iberostar Tenerife	0.38
7	Baskonia	0.36
8	FC Barcelona	0.35
9	Real Madrid	0.30
10	Andorra	0.30
11	Unicaja	0.30
12	Bilbao	0.29
13	Gran Canaria	0.27
14	Valencia	0.22
15	Obradoiro CAB	0.19
16	Estudiantes	0.17
17	Real Betis	0.10
18	Manresa	0.05
AVERAGE		0.34

## Blockshots

1	Real Madrid	4.17
2	Bilbao	3.78
3	Baskonia	3.52
4	Zaragoza	3.48
5	Obradoiro CAB	3.48
6	Burgos	3.00
7	FC Barcelona	2.74
8	Fuenlabrada	2.64
9	Murcia	2.59
10	Manresa	2.57
11	Valencia	2.48
12	Estudiantes	2.48
13	Gran Canaria	2.23
14	Real Betis	2.09
15	Andorra	2.00
16	Unicaja	1.96
17	Joventut	1.48
18	Iberostar Tenerife	1.14
AVERAGE		2.66

 **Pick'n`rolls Handler**

				Share
1	Murcia	5.2-13.0	40%	<b>20%</b>
2	Unicaja	4.8-12.1	40%	<b>20%</b>
3	Andorra	4.8-12.0	40%	<b>19%</b>
4	Baskonia	4.7-10.9	43%	<b>18%</b>
5	Bilbao	5.0-13.2	38%	<b>18%</b>
6	Valencia	4.8-9.9	48%	<b>18%</b>
7	Fuenlabrada	4.3-12.3	35%	<b>17%</b>
8	Iberostar Tenerife	4.7-11.0	43%	<b>17%</b>
9	Real Madrid	4.2-10.4	40%	<b>16%</b>
10	Real Betis	4.1-10.1	41%	<b>16%</b>
11	Manresa	4.1-11.0	37%	<b>15%</b>
12	Estudiantes	3.5-10.9	32%	<b>15%</b>
13	Burgos	3.6-9.5	38%	<b>14%</b>
14	Zaragoza	3.8-9.5	40%	<b>14%</b>
15	Gran Canaria	3.7-9.2	40%	<b>14%</b>
16	FC Barcelona	3.4-8.5	40%	<b>13%</b>
17	Joventut	3.2-8.1	40%	<b>12%</b>
18	Obradoiro CAB	2.8-7.4	38%	<b>11%</b>
AVERAGE		4.1-10.5	39%	<b>16%</b>

 **Pick'n`rolls Roller**

				Share
1	Manresa	3.0-4.7	64%	<b>11%</b>
2	Obradoiro CAB	2.5-3.7	68%	<b>10%</b>
3	Fuenlabrada	2.3-3.4	68%	<b>9%</b>
4	Bilbao	2.4-3.7	65%	<b>9%</b>
5	Real Betis	2.0-3.1	65%	<b>8%</b>
6	Joventut	2.0-3.1	65%	<b>8%</b>
7	Iberostar Tenerife	2.3-3.8	61%	<b>8%</b>
8	FC Barcelona	1.9-3.0	63%	<b>7%</b>
9	Valencia	1.8-3.0	60%	<b>7%</b>
10	Gran Canaria	1.8-3.2	56%	<b>7%</b>
11	Burgos	1.7-3.0	57%	<b>7%</b>
12	Andorra	1.7-2.6	65%	<b>7%</b>
13	Real Madrid	1.9-3.2	59%	<b>7%</b>
14	Unicaja	1.4-2.4	58%	<b>6%</b>
15	Murcia	1.6-2.4	67%	<b>6%</b>
16	Zaragoza	1.7-3.5	49%	<b>6%</b>
17	Baskonia	1.3-2.4	54%	<b>5%</b>
18	Estudiantes	1.2-2.5	48%	<b>5%</b>
AVERAGE		1.9-3.1	61%	<b>7%</b>

 **Catch and shoots**

				Share
1	Estudiantes	6.3-17.4	36%	<b>27%</b>
2	Gran Canaria	6.7-16.5	41%	<b>26%</b>
3	Real Betis	6.3-15.1	42%	<b>24%</b>
4	Unicaja	5.5-16.0	34%	<b>23%</b>
5	Valencia	6.0-15.6	38%	<b>23%</b>
6	Burgos	5.5-14.1	39%	<b>22%</b>
7	Iberostar Tenerife	5.7-14.8	39%	<b>21%</b>
8	Manresa	5.3-15.0	35%	<b>20%</b>
9	FC Barcelona	5.4-13.6	40%	<b>20%</b>
10	Zaragoza	5.3-12.5	42%	<b>20%</b>
11	Real Madrid	5.4-12.9	42%	<b>20%</b>
12	Obradoiro CAB	4.7-12.1	39%	<b>19%</b>
13	Joventut	4.9-15.0	33%	<b>19%</b>
14	Baskonia	4.7-12.8	37%	<b>18%</b>
15	Andorra	4.4-12.0	37%	<b>17%</b>
16	Fuenlabrada	4.5-12.0	38%	<b>17%</b>
17	Murcia	4.2-10.8	39%	<b>16%</b>
18	Bilbao	4.4-10.8	41%	<b>16%</b>
AVERAGE		5.3-13.8	38%	<b>20%</b>

 **Catch and drives**

				Share
1	Fuenlabrada	2.8-6.7	42%	<b>11%</b>
2	Joventut	2.3-5.1	45%	<b>9%</b>
3	Baskonia	2.4-5.1	47%	<b>9%</b>
4	Real Betis	2.1-5.1	41%	<b>8%</b>
5	Estudiantes	1.9-4.5	42%	<b>8%</b>
6	Burgos	1.7-4.2	40%	<b>7%</b>
7	Gran Canaria	1.9-4.4	43%	<b>7%</b>
8	Bilbao	1.9-4.7	40%	<b>7%</b>
9	Murcia	1.8-4.6	39%	<b>7%</b>
10	Andorra	1.9-4.0	48%	<b>7%</b>
11	Obradoiro CAB	1.8-4.4	41%	<b>7%</b>
12	Valencia	1.5-3.8	39%	<b>6%</b>
13	FC Barcelona	1.6-3.0	53%	<b>6%</b>
14	Real Madrid	1.5-3.8	39%	<b>6%</b>
15	Manresa	1.3-2.9	45%	<b>5%</b>
16	Unicaja	1.1-3.4	32%	<b>5%</b>
17	Iberostar Tenerife	1.5-3.1	48%	<b>5%</b>
18	Zaragoza	1.3-3.1	42%	<b>5%</b>
AVERAGE		1.8-4.2	43%	<b>7%</b>

 **Screen offs**

				Share
1	Obradoiro CAB	3.7-9.7	38%	<b>15%</b>
2	Real Madrid	3.7-8.3	45%	<b>14%</b>
3	Bilbao	3.4-7.5	45%	<b>12%</b>
4	Iberostar Tenerife	3.4-6.8	50%	<b>12%</b>
5	Burgos	2.6-5.7	46%	<b>10%</b>
6	Joventut	2.7-6.3	43%	<b>10%</b>
7	Murcia	2.6-6.6	39%	<b>10%</b>
8	Baskonia	2.5-5.2	48%	<b>9%</b>
9	Gran Canaria	2.3-4.7	49%	<b>9%</b>
10	Zaragoza	2.4-5.5	44%	<b>9%</b>
11	Andorra	2.2-6.1	36%	<b>9%</b>
12	Manresa	2.2-4.9	45%	<b>8%</b>
13	Fuenlabrada	2.0-4.6	43%	<b>8%</b>
14	Unicaja	1.7-4.7	36%	<b>7%</b>
15	FC Barcelona	2.0-4.5	44%	<b>7%</b>
16	Estudiantes	1.3-3.4	38%	<b>6%</b>
17	Real Betis	1.4-3.6	39%	<b>5%</b>
18	Valencia	1.1-3.0	37%	<b>4%</b>
AVERAGE		2.4-5.6	43%	<b>9%</b>

 **Post ups**

				Share
1	FC Barcelona	3.3-6.1	54%	<b>12%</b>
2	Valencia	3.0-5.6	54%	<b>12%</b>
3	Obradoiro CAB	2.4-5.5	44%	<b>10%</b>
4	Baskonia	2.7-5.4	50%	<b>10%</b>
5	Zaragoza	2.7-6.2	44%	<b>10%</b>
6	Bilbao	2.3-5.0	46%	<b>8%</b>
7	Iberostar Tenerife	2.2-4.1	54%	<b>8%</b>
8	Real Madrid	2.1-4.2	50%	<b>8%</b>
9	Unicaja	1.6-3.7	43%	<b>7%</b>
10	Real Betis	1.9-4.8	40%	<b>7%</b>
11	Murcia	1.5-3.2	47%	<b>6%</b>
12	Manresa	1.7-4.1	41%	<b>6%</b>
13	Gran Canaria	1.6-4.0	40%	<b>6%</b>
14	Estudiantes	1.4-3.6	39%	<b>6%</b>
15	Burgos	1.4-3.7	38%	<b>6%</b>
16	Andorra	1.3-2.5	52%	<b>5%</b>
17	Joventut	1.0-2.8	36%	<b>4%</b>
18	Fuenlabrada	1.1-2.7	41%	<b>4%</b>
AVERAGE		2.0-4.3	47%	<b>8%</b>

 **Transitions**

				Share
1	Andorra	4.9-7.5	65%	<b>19%</b>
2	Estudiantes	4.3-7.1	61%	<b>18%</b>
3	Zaragoza	4.7-8.4	56%	<b>17%</b>
4	Real Madrid	4.0-6.8	59%	<b>15%</b>
5	Baskonia	4.1-6.2	66%	<b>15%</b>
6	FC Barcelona	3.9-6.4	61%	<b>14%</b>
7	Bilbao	3.7-6.0	62%	<b>13%</b>
8	Unicaja	3.1-5.4	57%	<b>13%</b>
9	Joventut	3.3-5.6	59%	<b>13%</b>
10	Murcia	3.1-6.6	47%	<b>12%</b>
11	Manresa	3.3-5.3	62%	<b>12%</b>
12	Valencia	3.0-5.2	58%	<b>12%</b>
13	Real Betis	3.0-5.8	52%	<b>12%</b>
14	Fuenlabrada	3.1-6.9	45%	<b>12%</b>
15	Iberostar Tenerife	3.1-4.7	66%	<b>11%</b>
16	Gran Canaria	3.0-5.8	52%	<b>11%</b>
17	Burgos	2.7-4.6	59%	<b>11%</b>
18	Obradoiro CAB	2.0-3.4	59%	<b>8%</b>
AVERAGE		3.4-6.0	57%	<b>13%</b>

 **Isolations**

				Share
1	Real Betis	2.3-5.6	41%	<b>9%</b>
2	Burgos	2.0-5.5	36%	<b>8%</b>
3	Andorra	1.7-4.6	37%	<b>7%</b>
4	Murcia	1.9-5.6	34%	<b>7%</b>
5	Fuenlabrada	1.3-2.6	50%	<b>5%</b>
6	Estudiantes	1.2-4.1	29%	<b>5%</b>
7	Baskonia	1.4-3.3	42%	<b>5%</b>
8	Obradoiro CAB	1.2-3.4	35%	<b>5%</b>
9	FC Barcelona	1.3-2.9	45%	<b>5%</b>
10	Joventut	1.2-2.9	41%	<b>5%</b>
11	Bilbao	1.4-3.7	38%	<b>5%</b>
12	Zaragoza	1.3-3.0	43%	<b>5%</b>
13	Unicaja	1.0-2.8	36%	<b>4%</b>
14	Gran Canaria	1.1-2.6	42%	<b>4%</b>
15	Valencia	1.0-2.5	40%	<b>4%</b>
16	Manresa	0.8-2.2	36%	<b>3%</b>
17	Iberostar Tenerife	0.9-2.1	43%	<b>3%</b>
18	Real Madrid	0.8-3.0	27%	<b>3%</b>
AVERAGE		1.3-3.5	37%	<b>5%</b>

 **Hand offs**

				Share
1	Joventut	2.0-4.0	50%	<b>8%</b>
2	Burgos	1.4-2.9	48%	<b>6%</b>
3	Murcia	1.5-3.5	43%	<b>6%</b>
4	Fuenlabrada	1.2-2.7	44%	<b>5%</b>
5	Obradoiro CAB	1.3-2.9	45%	<b>5%</b>
6	Unicaja	1.0-2.2	45%	<b>4%</b>
7	Valencia	1.1-3.1	35%	<b>4%</b>
8	Gran Canaria	1.0-2.2	45%	<b>4%</b>
9	FC Barcelona	1.0-3.1	32%	<b>4%</b>
10	Andorra	1.0-2.4	42%	<b>4%</b>
11	Manresa	0.7-2.5	28%	<b>3%</b>
12	Iberostar Tenerife	0.7-1.4	50%	<b>3%</b>
13	Baskonia	0.7-2.0	35%	<b>3%</b>
14	Bilbao	0.6-1.7	35%	<b>2%</b>
15	Real Betis	0.5-1.5	33%	<b>2%</b>
16	Estudiantes	0.5-1.8	28%	<b>2%</b>
17	Zaragoza	0.6-1.7	35%	<b>2%</b>
18	Real Madrid	0.4-0.9	44%	<b>1%</b>
AVERAGE		1.0-2.4	42%	<b>4%</b>

 **Cuts**

				Share
1	Manresa	4.3-6.2	69%	<b>16%</b>
2	Joventut	3.6-5.5	65%	<b>14%</b>
3	FC Barcelona	3.4-4.7	72%	<b>13%</b>
4	Fuenlabrada	3.4-4.7	72%	<b>13%</b>
5	Unicaja	3.0-4.5	67%	<b>12%</b>
6	Gran Canaria	3.1-4.5	69%	<b>12%</b>
7	Zaragoza	3.3-5.5	60%	<b>12%</b>
8	Iberostar Tenerife	3.3-4.9	67%	<b>12%</b>
9	Real Madrid	3.0-4.4	68%	<b>11%</b>
10	Valencia	2.7-4.5	60%	<b>10%</b>
11	Burgos	2.6-3.9	67%	<b>10%</b>
12	Murcia	2.4-4.1	59%	<b>9%</b>
13	Bilbao	2.5-3.8	66%	<b>9%</b>
14	Obradoiro CAB	2.3-3.6	64%	<b>9%</b>
15	Real Betis	2.2-3.5	63%	<b>9%</b>
16	Baskonia	2.3-3.7	62%	<b>9%</b>
17	Andorra	1.8-2.7	67%	<b>7%</b>
18	Estudiantes	1.7-3.0	57%	<b>7%</b>
AVERAGE		2.8-4.3	65%	<b>11%</b>



### Pick`n`rolls Handler

				Share
1	Gran Canaria	5.9-14.5	41%	<b>22%</b>
2	Real Madrid	5.4-14.0	39%	<b>20%</b>
3	Bilbao	4.8-12.1	40%	<b>19%</b>
4	Obradoiro CAB	5.4-12.5	43%	<b>19%</b>
5	Zaragoza	4.3-10.9	39%	<b>17%</b>
6	Manresa	4.6-11.5	40%	<b>17%</b>
7	Baskonia	4.2-10.2	41%	<b>17%</b>
8	Burgos	4.0-10.0	40%	<b>16%</b>
9	Murcia	4.0-11.6	34%	<b>16%</b>
10	Unicaja	3.9-9.9	39%	<b>15%</b>
11	Joventut	4.3-10.4	41%	<b>15%</b>
12	Valencia	3.8-9.7	39%	<b>15%</b>
13	Andorra	3.7-10.7	35%	<b>14%</b>
14	Iberostar Tenerife	3.6-9.5	38%	<b>14%</b>
15	Fuenlabrada	3.7-9.7	38%	<b>14%</b>
16	FC Barcelona	3.8-8.9	43%	<b>14%</b>
17	Estudiantes	3.1-7.0	44%	<b>12%</b>
18	Real Betis	2.4-5.9	41%	<b>9%</b>
AVERAGE		4.1-10.5	39%	<b>16%</b>

### Pick`n`rolls Roller

				Share
1	Gran Canaria	2.5-3.6	69%	<b>10%</b>
2	Real Madrid	2.4-3.9	62%	<b>9%</b>
3	Joventut	2.5-4.0	63%	<b>9%</b>
4	Murcia	2.2-3.1	71%	<b>9%</b>
5	Unicaja	2.2-3.0	73%	<b>9%</b>
6	Manresa	2.4-3.9	62%	<b>9%</b>
7	Fuenlabrada	2.0-3.4	59%	<b>8%</b>
8	Andorra	2.0-3.3	61%	<b>8%</b>
9	Valencia	2.2-4.0	55%	<b>8%</b>
10	Obradoiro CAB	2.0-2.9	69%	<b>7%</b>
11	Baskonia	1.9-3.2	59%	<b>7%</b>
12	Estudiantes	1.8-3.1	58%	<b>7%</b>
13	Andorra	1.6-2.7	59%	<b>6%</b>
14	Real Betis	1.6-2.5	64%	<b>6%</b>
15	Bilbao	1.5-2.8	54%	<b>6%</b>
16	Iberostar Tenerife	1.6-2.4	67%	<b>6%</b>
17	FC Barcelona	1.4-2.7	52%	<b>5%</b>
18	Zaragoza	1.0-2.0	50%	<b>4%</b>
AVERAGE		1.9-3.1	61%	<b>7%</b>

### Catch and shoots

				Share
1	Real Betis	7.7-19.6	39%	<b>29%</b>
2	Valencia	6.8-17.3	39%	<b>26%</b>
3	FC Barcelona	6.4-16.1	40%	<b>24%</b>
4	Zaragoza	6.0-16.6	36%	<b>23%</b>
5	Bilbao	5.7-15.8	36%	<b>22%</b>
6	Baskonia	5.6-13.2	42%	<b>22%</b>
7	Iberostar Tenerife	5.3-13.1	40%	<b>21%</b>
8	Fuenlabrada	5.6-15.1	37%	<b>21%</b>
9	Burgos	5.2-14.0	37%	<b>20%</b>
10	Joventut	5.4-13.7	39%	<b>19%</b>
11	Unicaja	4.9-13.6	36%	<b>19%</b>
12	Murcia	4.6-11.1	41%	<b>18%</b>
13	Burgos	4.6-12.8	36%	<b>18%</b>
14	Manresa	4.8-11.8	41%	<b>18%</b>
15	Estudiantes	4.6-13.0	35%	<b>18%</b>
16	Obradoiro CAB	4.4-11.7	38%	<b>16%</b>
17	Real Madrid	4.0-10.6	38%	<b>15%</b>
18	Gran Canaria	3.7-9.6	39%	<b>14%</b>
AVERAGE		5.3-13.8	38%	<b>20%</b>

### Catch and drives

				Share
1	FC Barcelona	2.3-4.7	49%	<b>9%</b>
2	Real Betis	2.4-5.2	46%	<b>9%</b>
3	Andorra	2.0-4.6	43%	<b>8%</b>
4	Fuenlabrada	2.1-4.3	49%	<b>8%</b>
5	Estudiantes	2.0-4.7	43%	<b>8%</b>
6	Valencia	2.0-4.9	41%	<b>8%</b>
7	Obradoiro CAB	2.2-4.6	48%	<b>8%</b>
8	Manresa	1.8-4.5	40%	<b>7%</b>
9	Zaragoza	1.9-5.0	38%	<b>7%</b>
10	Joventut	2.1-4.5	47%	<b>7%</b>
11	Iberostar Tenerife	1.7-4.8	35%	<b>7%</b>
12	Unicaja	1.4-3.4	41%	<b>6%</b>
13	Murcia	1.5-3.7	41%	<b>6%</b>
14	Gran Canaria	1.5-3.1	48%	<b>6%</b>
15	Bilbao	1.6-4.0	40%	<b>6%</b>
16	Baskonia	1.2-3.0	40%	<b>5%</b>
17	Real Madrid	1.3-3.6	36%	<b>5%</b>
18	Burgos	1.4-3.3	42%	<b>5%</b>
AVERAGE		1.8-4.2	43%	<b>7%</b>

### Screen offs

				Share
1	Manresa	3.4-7.6	45%	<b>13%</b>
2	FC Barcelona	2.8-6.0	47%	<b>11%</b>
3	Bilbao	2.7-6.5	42%	<b>11%</b>
4	Estudiantes	2.7-4.9	55%	<b>11%</b>
5	Burgos	2.7-5.9	46%	<b>11%</b>
6	Murcia	2.6-6.4	41%	<b>10%</b>
7	Unicaja	2.6-6.0	43%	<b>10%</b>
8	Gran Canaria	2.7-6.4	42%	<b>10%</b>
9	Baskonia	2.4-5.7	42%	<b>9%</b>
10	Fuenlabrada	2.3-4.7	49%	<b>9%</b>
11	Zaragoza	2.2-5.3	42%	<b>9%</b>
12	Joventut	2.4-6.0	40%	<b>8%</b>
13	Iberostar Tenerife	2.0-4.8	42%	<b>8%</b>
14	Obradoiro CAB	2.1-4.7	45%	<b>8%</b>
15	Valencia	2.1-5.1	41%	<b>8%</b>
16	Real Madrid	2.2-6.3	35%	<b>8%</b>
17	Andorra	1.8-4.6	39%	<b>7%</b>
18	Real Betis	1.7-4.1	41%	<b>6%</b>
AVERAGE		2.4-5.6	43%	<b>9%</b>

### Post ups

				Share
1	Gran Canaria	2.8-5.0	56%	<b>11%</b>
2	Murcia	2.6-4.5	58%	<b>10%</b>
3	Fuenlabrada	2.4-5.5	44%	<b>9%</b>
4	Iberostar Tenerife	2.3-5.1	45%	<b>9%</b>
5	Andorra	2.2-4.9	45%	<b>9%</b>
6	Burgos	2.0-4.6	43%	<b>8%</b>
7	Real Madrid	2.1-5.0	42%	<b>8%</b>
8	Joventut	2.2-4.5	49%	<b>8%</b>
9	Bilbao	2.0-5.0	40%	<b>8%</b>
10	Unicaja	2.0-4.4	45%	<b>8%</b>
11	Manresa	2.1-4.6	46%	<b>8%</b>
12	Real Betis	1.8-3.8	47%	<b>7%</b>
13	Obradoiro CAB	1.9-3.9	49%	<b>7%</b>
14	Baskonia	1.6-3.7	43%	<b>6%</b>
15	Valencia	1.5-3.9	38%	<b>6%</b>
16	Estudiantes	1.4-3.6	39%	<b>6%</b>
17	FC Barcelona	1.3-2.4	54%	<b>5%</b>
18	Zaragoza	1.3-3.4	38%	<b>5%</b>
AVERAGE		2.0-4.3	47%	<b>8%</b>

### Transitions

				Share
1	Estudiantes	4.5-7.7	58%	<b>18%</b>
2	Joventut	4.7-7.8	60%	<b>16%</b>
3	Iberostar Tenerife	3.7-6.1	61%	<b>15%</b>
4	Burgos	3.7-6.1	61%	<b>14%</b>
5	Obradoiro CAB	4.0-6.1	66%	<b>14%</b>
6	Real Madrid	3.6-6.4	56%	<b>14%</b>
7	Murcia	3.7-6.5	57%	<b>14%</b>
8	Andorra	3.5-6.1	57%	<b>14%</b>
9	Baskonia	3.2-5.5	58%	<b>13%</b>
10	Zaragoza	3.4-6.1	56%	<b>13%</b>
11	Unicaja	3.2-5.5	58%	<b>13%</b>
12	Real Betis	3.5-6.5	54%	<b>13%</b>
13	FC Barcelona	3.1-5.7	54%	<b>12%</b>
14	Gran Canaria	2.9-4.9	59%	<b>11%</b>
15	Bilbao	2.8-5.9	47%	<b>11%</b>
16	Valencia	2.9-4.5	64%	<b>11%</b>
17	Fuenlabrada	3.0-5.4	56%	<b>11%</b>
18	Manresa	2.7-5.0	54%	<b>10%</b>
AVERAGE		3.4-6.0	57%	<b>13%</b>

### Isolations

				Share
1	Zaragoza	1.7-4.5	38%	<b>7%</b>
2	Andorra	1.7-3.7	46%	<b>7%</b>
3	Fuenlabrada	1.5-3.3	45%	<b>6%</b>
4	Estudiantes	1.4-3.8	37%	<b>6%</b>
5	Baskonia	1.4-3.9	36%	<b>6%</b>
6	Unicaja	1.6-3.9	41%	<b>6%</b>
7	Gran Canaria	1.2-3.2	38%	<b>5%</b>
8	FC Barcelona	1.4-3.7	38%	<b>5%</b>
9	Iberostar Tenerife	1.3-2.9	45%	<b>5%</b>
10	Bilbao	1.2-3.1	39%	<b>5%</b>
11	Real Betis	1.2-3.5	34%	<b>5%</b>
12	Real Madrid	1.4-3.9	36%	<b>5%</b>
13	Burgos	1.4-4.1	34%	<b>5%</b>
14	Murcia	1.1-3.0	37%	<b>4%</b>
15	Manresa	1.1-3.3	33%	<b>4%</b>
16	Obradoiro CAB	1.2-3.7	32%	<b>4%</b>
17	Joventut	1.2-2.4	50%	<b>4%</b>
18	Valencia	1.0-2.5	40%	<b>4%</b>
AVERAGE		1.3-3.5	37%	<b>5%</b>

### Hand offs

				Share
1	Obradoiro CAB	1.4-2.7	52%	<b>5%</b>
2	Real Madrid	1.4-3.5	40%	<b>5%</b>
3	Iberostar Tenerife	1.2-2.3	52%	<b>5%</b>
4	Gran Canaria	1.2-3.1	39%	<b>5%</b>
5	Fuenlabrada	1.0-2.1	48%	<b>4%</b>
6	Valencia	1.1-2.7	41%	<b>4%</b>
7	Baskonia	1.1-2.6	42%	<b>4%</b>
8	Andorra	1.0-2.1	48%	<b>4%</b>
9	Manresa	1.1-2.3	48%	<b>4%</b>
10	FC Barcelona	0.9-2.5	36%	<b>3%</b>
11	Estudiantes	0.7-2.0	35%	<b>3%</b>
12	Zaragoza	0.8-2.2	36%	<b>3%</b>
13	Unicaja	0.8-2.0	40%	<b>3%</b>
14	Murcia	0.9-2.3	39%	<b>3%</b>
15	Real Betis	0.8-1.7	47%	<b>3%</b>
16	Burgos	0.8-2.5	32%	<b>3%</b>
17	Bilbao	0.6-2.1	29%	<b>2%</b>
18	Joventut	0.5-1.4	36%	<b>2%</b>
AVERAGE		1.0-2.4	42%	<b>4%</b>

### Cuts

				Share
1	Zaragoza	3.0-4.6	65%	<b>12%</b>
2	Andorra	3.1-4.1	76%	<b>12%</b>
3	Estudiantes	3.0-4.9	61%	<b>12%</b>
4	Real Betis	3.2-4.6	70%	<b>12%</b>
5	Obradoiro CAB	3.2-4.6	70%	<b>12%</b>
6	Valencia	2.8-4.6	61%	<b>11%</b>
7	Baskonia	2.8-4.3	65%	<b>11%</b>
8	Unicaja	2.8-4.2	67%	<b>11%</b>
9	FC Barcelona	3.0-4.7	64%	<b>11%</b>
10	Iberostar Tenerife	2.8-4.0	70%	<b>11%</b>
11	Bilbao	2.7-4.5	60%	<b>11%</b>
12	Joventut	3.2-4.9	65%	<b>11%</b>
13	Burgos	2.9-4.0	73%	<b>11%</b>
14	Manresa	2.6-4.4	59%	<b>10%</b>
15	Murcia	2.6-3.9	67%	<b>10%</b>
16	Real Madrid	2.7-4.6	59%	<b>10%</b>
17	Fuenlabrada	2.6-3.7	70%	<b>10%</b>
18	Gran Canaria	1.9-2.9	66%	<b>7%</b>
AVERAGE		2.8-4.3	65%	<b>11%</b>



### InStat Index

		InStat Index	Matches played	
1	Sheradini	IT	275	22
2	Mirotic	FB	275	20
3	Thompkins	RM	273	13
4	Tavares	RM	272	23
5	Dubljevic	VAL	272	23
6	Shengelia	BAS	271	23
7	Tomic	FB	271	22
8	Davies	FB	271	21
9	Llull	RM	270	14
10	Henry	BAS	270	19

### Points

		Points	/100 poss	
1	Prepelic	JOV	22.30	36.71
2	Booker	MUR	21.21	35.23
3	Mirotic	FB	19.95	35.06
4	Sheradini	IT	18.27	32.97
5	Bouteille	UNI	17.26	29.58
6	Shengelia	BAS	16.35	24.29
7	Toolson	MAN	15.00	27.90
8	Eddie	MUR	14.36	25.56
9	Brizuela	UNI	13.45	25.44
10	Benite	BUR	13.39	28.02

### Field goals

1	Green	RB	8.0-14.8	54%
2	Booker	MUR	7.5-18.1	41%
3	Sheradini	IT	6.9-10.5	66%
4	Prepelic	JOV	6.7-14.5	46%
5	Bouteille	UNI	6.6-12.6	52%
6	Shengelia	BAS	5.9-12.0	49%
7	Kravic	OC	5.7-9.6	59%
8	Mirotic	FB	5.7-10.7	53%
9	Singler	IT	5.5-8.0	69%
10	Kravish	MAN	5.2-9.5	55%

### 2-pt field goals

1	Sheradini	IT	6.9-10.4	66%
2	Green	RB	5.8-9.3	62%
3	Kravic	OC	5.7-9.5	60%
4	Kravish	MAN	5.2-9.5	55%
5	Singler	IT	5.0-7.0	71%
6	Shengelia	BAS	4.8-8.7	55%
7	Omic	JOV	4.7-8.4	56%
8	Booker	MUR	4.6-10.3	45%
9	Arteaga	EST	4.2-7.0	60%
10	Mirotic	FB	4.2-6.2	68%

### 3-pt field goals

1	Eddie	MUR	3.5-8.0	44%
2	Booker	MUR	2.9-7.8	37%
3	Prepelic	JOV	2.9-7.6	38%
4	Ferrari	MAN	2.8-6.2	45%
5	McFadden	BUR	2.8-6.8	41%
6	Toolson	MAN	2.5-5.5	45%
7	Magee	OC	2.5-7.0	36%
8	Anderson	FUE	2.5-6.0	42%
9	Bouteille	UNI	2.4-5.2	46%
10	Green	RB	2.3-5.5	42%

### Free throws

1	Mirotic	FB	7.2-7.8	92.3%
2	Prepelic	JOV	6.0-6.9	87.0%
3	Sheradini	IT	4.6-5.6	82.1%

### Assists

1	Mekel	UNI	11.0
2	Huertas	IT	8.6
3	Sharif-Cook	GC	7.5
4	Perez	MAN	7.1
5	Zisis	JOV	6.2
6	Jackson	EST	6.0
7	Ferrari	MAN	6.0
8	Bellas	FUE	5.5
9	Heurtel	FB	5.5
10	Campazzo	RM	5.3

### Uncontested FG

1	Ferrari	MAN	2.2-4.2	52.4%
2	Huertas	IT	1.7-3.1	54.8%
3	Eddie	MUR	1.6-3.3	48.5%
4	Booker	MUR	1.5-3.5	42.9%
5	McFadden	BUR	1.4-2.5	56.0%
6	Toolson	MAN	1.4-2.6	53.8%
7	Salin	IT	1.3-3.7	35.1%
8	Thompkins	RM	1.3-2.5	52.0%
9	Benite	BUR	1.3-2.4	54.2%
10	Adams	UNI	1.3-3.0	43.3%

### Contested FG

1	Green	RB	7.0-13.3	52.6%
2	Sheradini	IT	6.1-9.7	62.9%
3	Prepelic	JOV	5.7-12.8	44.5%
4	Booker	MUR	5.5-14.2	38.7%
5	Bouteille	UNI	5.3-10.4	51.0%
6	Shengelia	BAS	5.2-10.2	51.0%
7	Kravic	OC	5.0-8.9	56.2%
8	Mirotic	FB	4.9-9.0	54.4%
9	Kravish	MAN	4.6-8.4	54.8%
10	Singler	IT	4.5-6.5	69.2%

### +/-

		Average per match		
1	Tavares	RM	206.0	9.0
2	Mirotic	FB	155.0	7.8
3	Hannah	AND	144.0	6.3
4	Higgins	FB	142.0	8.9
5	Campazzo	RM	138.0	6.6
6	Tomic	FB	133.0	6.0
7	Hanga	FB	127.0	6.0
8	Brussino	ZAR	126.0	5.5
9	Dubljevic	VAL	118.0	5.1
10	Fernandez	RM	106.0	7.1

### Blockshots

1	Lammers	BIL	2.04
2	Tavares	RM	1.65
3	Kravic	OC	1.35
4	Balvin	BIL	1.22
5	Hlinason	ZAR	1.22
6	Costello	GC	1.23
7	Brodziansky	OC	1.13
8	Eyenga	FUE	1.10
9	Clark	BUR	1.09
10	Kravish	MAN	0.95

### Blockshots against

1	Cera	ZAR	2.00
2	Davis	MAN	1.20
3	Wroten	JOV	1.00
4	Penarroya	MAN	1.00
5	Musli	AND	1.00
6	Balcerowski	GC	1.00
7	Avramovic	EST	0.76
8	Dragic	BAS	0.75
9	Vaulet	MAN	0.65
10	Huertas	IT	0.64

### Rating

		Net rating	Offensive rating	Defensive rating	
1	Fernandez	RM	23.0	104.8	81.9
2	Marinkovic	VAL	19.3	110.9	91.6
3	Higgins	FB	18.4	107.3	88.8
4	Tavares	RM	18.4	103.4	85.0
5	Brussino	ZAR	14.5	102.4	87.8
6	Hanga	FB	14.3	109.4	95.1
7	Mirotic	FB	14.1	109.8	95.7
8	Llull	RM	14.0	100.0	86.0
9	Vives	VAL	13.9	106.0	92.1
10	Campazzo	RM	14.1	104.2	90.1



## Rebounds

1	Costello	GC	7.77
2	Omic	JOV	7.74
3	Thompson	ZAR	7.50
4	Sheradini	IT	7.23
5	Balvin	BIL	7.17
6	Tavares	RM	7.09
7	Sima	MAN	7.00
8	Clark	BUR	6.57
9	Kravish	MAN	6.52
10	Kravic	OC	6.22



## Offensive rebounds

1	Omic	JOV	3.22
2	Lima	BUR	2.87
3	Arteaga	EST	2.74
4	Kravic	OC	2.65
5	Costello	GC	2.73
6	Sheradini	IT	2.55
7	Kravish	MAN	2.52
8	Tavares	RM	2.52
9	Perez	AND	2.28
10	Rojas	MUR	2.23



## Defensive rebounds

1	Thompson	ZAR	5.50
2	Balvin	BIL	5.22
3	Costello	GC	5.05
4	Sima	MAN	5.00
5	Clark	BUR	5.00
6	Sheradini	IT	4.68
7	Tavares	RM	4.57
8	Diez	IT	4.59
9	Omic	JOV	4.52
10	Shengelia	BAS	4.39



## Turnovers

1	Huertas	IT	3.64
2	Ferrari	MAN	3.50
3	Mekel	UNI	3.00
4	Booker	MUR	2.79
5	Toolson	MAN	2.54
6	Wroten	JOV	2.50
7	Heurtel	FB	2.50
8	Shengelia	BAS	2.48
9	Green	RB	2.50
10	Liggins	FUE	2.40



## Steals

1	Pressey	EST	2.39
2	Green	RB	1.75
3	Fernandez	UNI	1.67
4	Singler	IT	1.50
5	Henry	BAS	1.53
6	Heurtel	FB	1.50
7	Christon	BAS	1.50
8	Sharif-Cook	GC	1.39
9	Shengelia	BAS	1.35
10	Vives	VAL	1.25



## Fouls

			On shots	
1	Sanadze	FUE	4.00	—
2	Thompson	ZAR	4.00	0.5
3	Sima	MAN	4.00	—
4	Christon	BAS	3.25	0.3
5	Rousselle	BIL	3.32	0.9
6	Costello	GC	3.18	0.9
7	Kadji	EST	3.05	0.7
8	Mekel	UNI	3.00	1.0
9	Harper	GC	3.00	0.5
10	Bogris	IT	3.00	1.2



## Good fouls

			Share	
1	Mekel	UNI	3.00	100%
2	Sima	MAN	2.00	50%
3	Arteaga	EST	1.65	62%
4	Eric	BAS	1.52	53%
5	Costello	GC	1.41	44%
6	Gillet	FUE	1.37	52%
7	Mockevicius	FUE	1.35	51%
8	Rousselle	BIL	1.41	42%
9	Adams	UNI	1.32	48%
10	Harper	GC	1.27	42%



## Bad fouls

			Share	
1	Sanadze	FUE	4.00	100%
2	Rodriguez	BIL	3.00	100%
3	Thompson	ZAR	3.00	75%
4	Christon	BAS	2.75	85%
5	Delaney	FB	2.16	73%
6	Rojas	MUR	2.09	74%
7	Kadji	EST	1.95	64%
8	Sima	MAN	2.00	50%
9	Jackson	EST	2.00	80%
10	Larentzakis	MUR	2.00	68%



## Technical fouls

1	Prepetic	JOV	0.35
2	Larentzakis	MUR	0.16
3	Stevic	JOV	0.18
4	Eyenga	FUE	0.21
5	Omic	JOV	0.17
6	Mockevicius	FUE	0.16
7	Liggins	FUE	0.20
8	Salin	IT	0.15
9	Radoncic	IT	0.17
10	Delaney	FB	0.05



## Fouls suffered

			Shooting share	
1	Prepetic	JOV	6.35	22%
2	Sheradini	IT	5.73	26%
3	Mirotic	FB	5.60	31%
4	Shengelia	BAS	5.04	26%
5	Ferrari	MAN	4.83	10%
6	Booker	MUR	4.74	22%
7	Diagne	AND	4.33	31%
8	Bellas	FUE	4.00	9%
9	Randle	FUE	4.00	—
10	Balvin	BIL	4.04	17%



## Opp Points

			Points	/100 poss
1	Shengelia	BAS	12.0	18.4
2	Costello	GC	11.7	25.9
3	Kravic	OC	11.6	21.1
4	Sheradini	IT	11.4	21.3
5	Toolson	MAN	11.3	21.2
6	Diagne	AND	11.1	25.4
7	Gillet	FUE	10.9	21.4
8	Kravish	MAN	10.7	23.7
9	Adams	UNI	10.4	20.9
10	Brodziansky	OC	10.2	22.0



## Opponents field goals

1	Kravic	OC	4.9-10.4	47%
2	Sheradini	IT	4.8-9.2	52%
3	Diagne	AND	4.7-8.1	58%
4	Kravish	MAN	4.4-8.4	52%
5	Costello	GC	4.3-9.6	45%
6	Shengelia	BAS	4.2-9.0	47%
7	Toolson	MAN	4.1-8.8	47%
8	Tavares	RM	4.0-9.9	40%
9	Sima	MAN	4.0-6.0	67%
10	Simonovic	UNI	4.0-7.5	53%



## Opp 3-pt field goals

1	Kravic	OC	4.6-9.2	50%
2	Sheradini	IT	4.5-8.4	54%
3	Diagne	AND	4.3-7.1	61%
4	Kravish	MAN	4.2-8.0	53%
5	Costello	GC	4.0-8.1	49%
6	Sima	MAN	4.0-6.0	67%
7	Tavares	RM	3.6-8.4	43%
8	Mickey	RM	3.5-7.9	44%
9	Arteaga	EST	3.2-6.3	51%
10	Gillet	FUE	3.1-5.1	61%



## Opp 2-pt field goals

1	Toolson	MAN	2.2-5.3	42%
2	Penarroya	MAN	2.0-3.0	67%
3	Vildoza	BAS	1.7-3.4	50%
4	Enechioniya	RB	1.7-2.7	63%
5	Bellas	FUE	1.6-4.6	35%
6	Borg	RB	1.6-3.5	46%
7	Davis	MAN	1.6-3.4	47%
8	Huertas	IT	1.5-3.8	39%
9	Shengelia	BAS	1.5-3.6	42%
10	Vives	VAL	1.5-3.9	38%



### Pick'n`rolls Handler

1	Booker	MUR	3.3-7.8	42%
2	Huertas	IT	3.1-6.7	46%
3	Ferrari	MAN	2.3-5.8	40%
4	Llull	RM	2.0-4.4	45%
5	Henry	BAS	2.0-3.6	56%
6	Green	RB	1.8-3.0	60%
7	Vildoza	BAS	1.8-4.0	45%
8	Colom Barrufet	VAL	1.8-3.5	51%
9	Hannah	AND	1.8-3.6	50%
10	Cvetkovic	MAN	1.7-4.1	41%



### Pick'n`rolls Roller

1	Kravish	MAN	2.1-3.1	68%
2	Sima	MAN	2.0-2.0	100%
3	Kravic	OC	2.0-2.8	71%
4	Niang	RB	1.6-2.2	73%
5	Sheradini	IT	1.4-2.0	70%
6	Lammers	BIL	1.2-1.8	67%
7	Diagne	AND	1.2-1.3	92%
8	Costello	GC	1.2-2.1	57%
9	Omic	JOV	1.2-1.7	71%
10	Tomic	FB	1.2-2.0	60%



### Pick'n`pops

1	Diagne	AND	0.9-1.7	53%
2	Palacios	EST	0.8-2.1	38%
3	Brodziansky	OC	0.7-1.5	47%
4	Costello	GC	0.6-1.5	40%
5	Tamba	UNI	0.5-0.5	100%
6	Davies	FB	0.5-0.8	63%
7	Kadji	EST	0.5-1.2	42%
8	Dubljevic	VAL	0.5-1.1	45%
9	Morgan	JOV	0.4-0.7	57%
10	Kravic	OC	0.4-0.7	57%



### Post ups

1	Sheradini	IT	2.2-3.6	61%
2	Musli	AND	1.4-2.5	56%
3	Mirotic	FB	1.4-2.0	70%
4	Dubljevic	VAL	1.4-2.4	58%
5	Shengelia	BAS	1.3-2.7	48%
6	Tomic	FB	1.2-2.2	55%
7	Kadji	EST	1.0-2.1	48%
8	James	MUR	1.0-1.5	67%
9	Thompkins	RM	1.0-2.1	48%
10	Brodziansky	OC	0.9-2.0	45%



### Isolations

1	Green	RB	1.8-3.8	47%
2	Wroten	JOV	1.3-2.0	65%
3	Booker	MUR	1.2-3.4	35%
4	Mekel	UNI	1.0-1.0	100%
5	Randle	FUE	1.0-2.0	50%
6	Davis	MAN	0.8-1.6	50%
7	Rivers	RB	0.7-1.9	37%
8	Slaughter	RB	0.6-1.7	35%
9	Brizuela	UNI	0.6-1.1	55%
10	Clark	BUR	0.6-1.5	40%



### Catch and shoots

1	Sanadze	FUE	2.0-4.0	50%
2	Simonovic	UNI	1.5-2.5	60%
3	Gillet	FUE	1.4-3.0	47%
4	Diez	IT	1.4-2.9	48%
5	Eddie	MUR	1.3-2.8	46%
6	Green	RB	1.3-2.3	57%
7	Abrines	FB	1.3-2.3	57%
8	Clark	BUR	1.2-3.2	38%
9	Shurna	GC	1.1-1.9	58%
10	Thompkins	RM	1.1-2.5	44%



### Catch and drives

1	Anderson	FUE	0.9-1.7	53%
2	Brown	FUE	0.8-1.5	53%
3	Ferrari	MAN	0.7-1.2	58%
4	Shengelia	BAS	0.7-1.4	50%
5	Bouteille	UNI	0.7-1.2	58%
6	Carroll	RM	0.6-1.2	50%
7	Eyenga	FUE	0.6-1.4	43%
8	Tokoto	BUR	0.6-0.9	67%
9	Harangody	JOV	0.6-1.4	43%
10	Shields	BAS	0.6-1.2	50%



### Screen offs

1	Prepelic	JOV	1.8-4.2	43%
2	Eddie	MUR	1.6-3.7	43%
3	Salin	IT	1.5-3.6	42%
4	Carroll	RM	1.4-3.2	44%
5	Vasileiadis	OC	1.4-3.8	37%
6	Benite	BUR	1.2-2.3	52%
7	Kulboka	BIL	1.1-2.3	48%
8	Singler	IT	1.0-2.0	50%
9	Magee	OC	1.0-3.2	31%
10	Bouteille	UNI	0.9-2.2	41%



### Hand offs

1	Prepelic	JOV	0.9-2.1	43%
2	Wroten	JOV	0.8-0.8	100%
3	Booker	MUR	0.6-0.9	67%
4	Singler	IT	0.5-0.5	100%
5	Wood	FUE	0.5-1.0	50%
6	Magee	OC	0.5-1.0	50%
7	Eddie	MUR	0.5-0.9	56%
8	Bellas	FUE	0.4-0.6	67%
9	Adams	UNI	0.4-0.9	44%
10	Benite	BUR	0.4-1.0	40%



### Transitions

1	Randle	FUE	2.0-2.0	100%
2	Heurtel	FB	1.5-1.5	100%
3	Brown	BIL	1.2-1.7	71%
4	Ennis	ZAR	1.1-1.9	58%
5	Garino	BAS	1.1-1.3	85%
6	Green	RB	1.0-2.0	50%
7	Walker	AND	1.0-1.4	71%
8	Mekel	UNI	1.0-1.0	100%
9	Singler	IT	1.0-1.0	100%
10	Davis	MAN	1.0-2.0	50%



### Cuts

1	Singler	IT	1.5-1.5	100%
2	Sheradini	IT	1.3-1.9	68%
3	Niang	RB	1.1-1.4	79%
4	Kravish	MAN	1.1-1.6	69%
5	Mockevicius	FUE	1.0-1.2	83%
6	Mejri	RM	1.0-1.0	100%
7	Prepelic	JOV	1.0-1.3	77%
8	Tavares	RM	0.9-1.0	90%
9	Radovic	ZAR	0.9-1.4	64%
10	Omic	JOV	0.9-1.5	60%



### Putbacks

1	Arteaga	EST	1.2-1.7	71%
2	Omic	JOV	1.1-1.8	61%
3	Sanadze	FUE	1.0-1.0	100%
4	Thompson	ZAR	1.0-1.0	100%
5	Sima	MAN	1.0-2.0	50%
6	Sheradini	IT	0.8-1.3	62%
7	Eric	BAS	0.8-1.2	67%
8	Lima	BUR	0.8-1.3	62%
9	Kravic	OC	0.7-1.4	50%
10	Fall	BAS	0.7-1.0	70%



Centers

		InStat Index	Matches	Minutes	Points	/100 poss	Assists	Field goals	3-pt field goals	Free throws	REBOUNDS					FOULS					BLK	BLK against	Opp Points	Opponents field goals	+/-	Net rating	
											Total	Offense	Defense	Turnov	Steals	Fouls	Reason	Unreason	Tech	Against							
1	Sheradini	IT	275	22	26:44	18.3	33.0	1.7	7-10 70%	0-0.1 0%	4.6-5.6 82%	7.2	2.6	4.7	2.0	0.6	2.5	0.9	1.6	0.1	5.7	0.5	0.6	11.4	4.8-9.2 52%	92.0	3.6
2	Tavares	RM	272	23	22:25	7.7	16.5	0.4	3-4 75%	-	1.7-2.4 71%	7.1	2.5	4.6	1.0	0.5	2.0	0.9	1.0	0.1	2.3	1.7	0.2	9.9	4.0-9.9 40%	206.0	18.4
3	Dubljevic	VAL	272	23	22:20	11.3	25.0	2.0	4-8 50%	1.1-2.6 42%	2.3-2.7 85%	6.0	1.8	4.2	1.6	0.6	1.5	0.5	1.0	-	2.9	0.2	0.4	6.9	2.9-6.4 45%	118.0	8.1
4	Tomic	FB	271	22	19:35	9.7	23.6	1.6	4-7 57%	0-0.1 0%	1.5-2.1 71%	4.9	1.8	3.1	1.1	1.0	1.9	0.6	1.4	0.1	2.6	0.1	0.2	7.4	3.1-5.7 54%	133.0	12.8
5	Davies	FB	271	21	18:15	11.6	30.2	1.1	4-8 50%	0.4-0.8 50%	3.0-3.9 77%	4.4	1.8	2.6	1.5	1.1	2.6	1.1	1.4	0.1	3.7	0.5	0.2	8.9	3.3-6.5 51%	65.0	11.2
6	Mejri	RM	267	4	9:39	3.3	17.3	0.8	2-4 50%	0-1.3 0%	0.3-0.8 38%	2.0	0.5	1.5	-	-	1.5	0.8	0.8	-	0.5	0.3	0.3	4.5	1.8-5.3 34%	17.0	34.3
7	Omic	JOV	266	23	24:17	10.8	21.1	1.7	5-9 56%	0-0.3 0%	1.2-2.2 55%	7.7	3.2	4.5	1.4	0.2	1.9	0.8	1.0	0.2	2.7	0.3	0.4	7.2	2.9-6.4 45%	-84.0	-5.9
8	Tobey	VAL	266	17	15:34	6.3	19.9	0.5	3-6 50%	0.3-0.9 33%	0.2-0.4 50%	5.3	1.5	3.8	0.5	0.2	1.8	1.1	0.7	0.1	0.5	0.8	0.2	6.0	2.2-5.6 39%	22.0	4.9
9	Musli	AND	265	17	18	9.5	25.6	1.2	4-7 57%	0-0.1 0%	1.8-3.7 49%	5.7	2.1	3.5	1.2	0.6	1.9	0.9	0.9	-	2.9	0.4	1.0	7.9	3.2-6.7 48%	20.0	4.0
10	Diagne	AND	265	15	21:13	11.5	25.6	0.3	4-7 57%	0.1-0.2 50%	2.9-4.3 67%	6.1	2.0	4.1	1.3	0.7	2.2	0.6	1.5	0.1	4.3	0.5	0.1	11.1	4.7-8.1 58%	60.0	6.7
11	Lima	BUR	265	23	20:49	7.7	18.4	1.2	3-6 50%	-	0.9-2.9 31%	5.8	2.9	2.9	0.8	0.9	2.3	1.1	1.1	0.1	2.7	1.0	0.2	9.1	3.2-7.2 44%	62.0	8.0
12	Pustovyi	FB	264	5	8:37	5.4	30.0	0.4	2-2 100%	-	1.8-2.0 90%	2.6	1.2	1.4	0.4	0.2	1.8	0.6	1.2	-	1.6	0.4	0.2	3.0	1.0-2.2 45%	5.0	5.6
13	Reyes	RM	263	11	9:45	4.6	21.3	0.5	2-4 50%	0.4-0.7 57%	1.0-1.2 83%	3.0	1.7	1.3	0.8	0.2	1.3	0.8	0.5	0.1	1.9	-	0.2	5.6	1.8-4.2 43%	-3.0	-4.9
14	Eric	BAS	263	21	14:52	7.0	23.0	0.2	3-5 60%	-	0.8-1.6 50%	3.7	1.9	1.8	1.4	0.3	2.9	1.5	1.3	0.1	1.5	0.8	0.3	8.1	2.7-5.9 46%	-3.0	0.9
15	Kravish	MAN	263	21	21:53	12.1	27.1	1.7	5-10 50%	0-0.1 0%	1.7-2.0 85%	6.5	2.5	4.0	1.6	0.8	2.4	0.8	1.6	-	1.6	1.0	0.6	10.7	4.4-8.4 52%	-22.0	-2.0
16	Kravic	OC	262	23	27:24	13.2	24.0	1.0	6-10 60%	0-0.1 0%	1.9-3.0 63%	6.2	2.7	3.6	1.5	1.0	2.6	1.0	1.6	-	2.7	1.4	0.6	11.6	4.9-10.4 47%	-162.0	-12.5
17	Balvin	BIL	262	23	22:33	8.6	18.0	1.7	3-6 50%	-	2.2-2.8 79%	7.2	2.0	5.2	1.7	0.5	2.2	0.8	1.4	-	4.0	1.2	0.3	7.6	3.0-7.6 39%	-2.0	-4.5
18	Fall	BAS	262	23	13:16	5.7	21.3	0.1	2-3 67%	-	1.2-2.0 60%	4.1	1.3	2.8	1.5	0.3	2.4	0.6	1.7	0.1	2.0	0.7	-	6.4	2.3-4.8 48%	-27.0	-8.5
19	Justiz	ZAR	261	16	15:41	7.9	24.0	0.4	3-7 43%	0-0.1 0%	1.2-1.8 67%	3.5	1.7	1.8	1.4	0.2	2.8	1.1	1.6	0.1	2.1	0.6	0.1	6.4	2.6-5.6 46%	30.0	4.1
20	Diop	BAS	261	21	13:19	5.4	20.4	0.1	2-3 67%	0.3-0.8 38%	2.1-2.4 88%	3.6	1.3	2.3	0.6	0.6	2.1	1.0	1.1	0.1	2.2	0.8	0.2	5.2	1.7-4.5 38%	33.0	5.9
21	Arteaga	EST	261	23	18:36	9.1	23.5	0.2	4-7 57%	-	0.8-1.1 73%	5.6	2.7	2.9	0.7	0.4	2.7	1.7	1.0	0.1	1.2	0.9	0.1	9.9	3.7-8.0 46%	-79.0	-8.9
22	Labeyrie	VAL	261	22	20:21	7.4	18.1	0.6	3-5 60%	0.4-1.3 31%	1.8-2.5 72%	5.3	1.9	3.5	0.5	0.7	0.8	0.3	0.5	0.1	2.4	0.5	0.3	8.3	3.5-7.1 49%	58.0	5.9
23	Cate	MUR	261	21	16:35	6.6	19.4	0.9	3-4 75%	0-0.1 0%	1.5-1.9 79%	3.5	2.1	1.5	0.8	0.5	1.9	0.8	1.0	-	1.9	0.4	-	7.5	2.8-5.8 48%	-10.0	-0.7
24	Lammers	BIL	261	23	19:34	7.7	19.8	0.5	3-5 60%	0-0.1 0%	1.2-1.7 71%	5.0	2.2	2.7	1.0	0.9	2.1	1.3	0.9	-	1.3	2.0	0.3	8.7	3.3-9.2 36%	13.0	6.7
25	Elegar	UNI	260	21	13:19	3.3	12.0	0.3	1-2 50%	-	1.0-1.4 71%	3.2	1.6	1.6	0.9	0.2	2.1	1.1	0.9	-	1.4	0.3	0.1	4.8	1.7-3.2 53%	-2.0	-0.2
26	Bourousis	GC	259	20	18	7.9	21.3	1.6	3-7 43%	0.7-2.1 33%	2.0-2.4 83%	4.0	1.0	3.0	1.4	0.6	2.4	1.2	1.2	0.1	3.2	0.1	0.3	7.9	3.0-6.5 46%	-65.0	-12.1
27	Hlinason	ZAR	259	23	13:43	4.6	16.2	0.4	2-3 67%	-	1.0-1.5 67%	2.6	1.0	1.6	0.5	0.1	1.6	1.0	0.6	-	1.5	1.2	0.4	7.3	3.1-7.8 40%	26.0	2.8
28	Llovet	AND	259	21	17:50	5.2	13.7	0.9	2-3 67%	0.1-0.3 33%	1.4-2.6 54%	4.0	1.3	2.7	1.1	0.7	2.3	1.2	1.1	0.1	2.9	0.2	0.2	6.8	2.3-5.8 40%	-16.0	-1.9
29	Vazquez Gonzalez	ZAR	259	18	12:29	3.5	13.4	0.8	2-4 50%	0-0.1 0%	0.4-0.7 57%	3.0	1.1	1.9	0.5	0.3	1.6	0.6	1.1	-	0.7	0.6	0.1	5.1	2.0-4.9 41%	37.0	9.0
30	Bogris	IT	258	10	13:03	3.1	12.7	1.4	2-3 67%	-	0.1-0.2 50%	3.0	0.5	2.5	0.9	0.3	3.0	1.3	1.7	-	0.2	0.1	0.2	7.3	2.5-4.9 51%	4.0	9.5
31	Sow	EST	258	8	2:43	0.1	2.0	0.3	-	0-0.1 0%	0.1-0.3 33%	0.1	-	0.1	0.3	-	0.8	0.4	0.4	-	0.1	0.1	0.1	0.5	0.3-0.5 60%	10.0	24.3
32	Diop	GC	258	4	3:28	1.0	12.5	-	0-1 0%	-	0.5-1.5 33%	1.0	0.5	0.5	0.3	0.3	1.3	0.3	1.0	-	0.8	0.3	-	3.5	1.3-2.5 52%	2.0	1.7
33	Mamadou	RB	258	7	13:03	4.6	16.6	0.3	2-3 67%	-	0.6-0.9 67%	3.1	1.4	1.7	0.6	0.6	1.6	1.0	0.6	-	1.1	0.6	0.3	7.1	2.4-4.9 49%	8.0	7.1
34	Guerra	IT	258	16	8:30	3.1	17.8	0.7	1-2 50%	0.1-0.1 100%	0.7-1.6 44%	2.1	0.9	1.1	0.8	0.3	2.2	0.9	1.3	-	1.9	0.2	0.4	4.6	1.3-2.3 57%	-7.0	-2.2
35	Rivero Fernandez	BUR	257	10	15:16	6.8	21.7	0.9	2-5 40%	0.4-1.2 33%	1.6-2.5 64%	2.9	1.3	1.6	0.8	0.4	1.9	0.6	1.3	-	2.1	0.3	0.3	5.6	1.9-5.0 38%	-39.0	-10.3
36	Huskic	BUR	257	9	18:39	5.7	14.7	1.4	2-5 40%	0-0.1 0%	1.0-2.0 50%	4.1	1.6	2.6	2.0	0.9	2.6	0.8	1.8	-	1.9	0.3	0.2	7.4	2.8-6.2 45%	-21.0	-5.5
37	Ehigiator	FUE	256	19	13:06	4.7	17.4	0.2	2-3 67%	0-0.1 0%	1.3-2.1 62%	2.7	1.0	1.7	0.8	0.3	2.4	1.0	1.4	-	2.1	0.5	0.3	6.2	1.9-4.2 45%	-49.0	-9.6
38	Guerrero	UNI	256	21	9:36	3.0	14.5	0.1	1-2 50%	0-0.1 0%	1.0-1.6 63%	2.4	0.8	1.7	0.6	0.1	1.4	0.4	1.0	-	1.0	0.3	0.2	3.7	1.4-3.0 47%	-46.0	-14.5
39	Birgander	JOV	256	3	12:42	5.3	20.0	0.7	3-4 75%	-	-	3.3	2.0	1.3	0.3	0.3	2.7	1.0	1.7	-	0.3	1.0	-	8.0	3.0-5.7 53%	-5.0	-7.4
40	Niang	RB	256	9	19:37	7.2	18.1	0.6	3-5 60%	-	0.3-0.6 50%	5.3	2.0	3.3	0.8	0.2	1.0	0.4	0.6	0.1	1.6	0.4	0.2	8.1	3.2-6.4 50%	-24.0	-6.4
41	Jordan	RB	255	6	19:52	7.5	18.5	0.7	2-5 40%	0-0.2 0%	2.8-4.0 70%	5.2	1.2	4.0	1.8	0.2	2.5	1.2	1.3	-	2.7	0.5	0.3	8.7	3.0-7.2 42%	-8.0	4.7
42	Tumba	MUR	255	19	12:22	2.2	8.1	0.5	1-2 50%	0-0.1 0%	0.6-1.4 43%	3.2	1.3	1.9	0.8	0.4	2.7	1.3	1.3	-	2.4	0.6	0.2	6.2	2.0-4.8 42%	-75.0	-16.5
43	Palacios	EST	255	23	20:04	8.0	19.3	1.0	3-9 33%	0.3-1.0 30%	0.8-1.5 53%	3.7	1.3	2.4	0.8	1.0	2.4	1.0	1.5	-	1.7	0.2	0.5	9.1	3.3-6.9 48%	-95.0	-8.9
44	Whittington	RB	255	23	19:21	8.4	21.1	0.7	3-7 43%	1.1-3.0 37%	1.4-1.7 82%	4.5	1.6	2.9	1.2	0.5	2.0	0.8	1.2	-	1.8	0.2	0.4	6.7	2.4-5.5 44%	-40.0	-4.9
45	Spires	OC	254	16	8:08	1.8	10.4	0.6	1-2 50%	-	0.1-0.4 25%	1.9	0.9	0.9	0.4	0.2	1.5	0.6	0.9	-	0.6	0.3	0.4	3.7	1.4-2.7 52%	16.0	5.6
46	Sakho	MAN	254	15	15:20	5.9	18.3	0.7	2-4 50%	-	2.1-3.1 68%	4.6	1.3	3.3	1.5	0.4	2.1	1.0	1.1	-	2.6	0.4	0.2	6.3	2.4-4.5 53%	-63.0	-9.7
47	Suarez	IT	254	18	11:03	2.3	10.3	0.4	1-2 50%	0.6-1.8 33%	0.2-0.3 67%	1.3	0.3	1.1	0.2	0.2	1.3	0.7	0.6	-	0.4	0.1	0.1	4.6	1.5-3.4 44%	-38.0	-6.2





## Forwards

		InStat Index	Matches	Minutes	Points	/100 poss	Assists	Field goals				Free throws	REBOUNDS					FOULS					BLK	BLK against	Opp Points	Opponents field goals	+/-	Net rating			
								3-pt	field goals				Total	Offense	Defense	Turnov	Steals	Fouls	Reason	Unreason	Tech	Against									
1	Mirotic	FB	275	20	26:50	20.0	35.1	1.5	6-11	55%	1.5-4.5	33%	7.2-7.8	92%	5.7	1.4	4.4	2.1	1.2	1.8	0.6	1.1	0.1	5.6	0.7	0.2	9.1	3.4-8.4	40%	155.0	14.1
2	Thompkins	RM	273	13	24:22	12.6	24.9	2.1	5-9	56%	1.7-4.2	40%	1.4-1.6	88%	4.0	1.0	3.0	1.2	0.7	1.8	0.5	1.2	-	1.2	0.3	0.2	6.9	2.5-6.2	40%	87.0	13.6
3	Shengelia	BAS	271	23	32:57	16.4	24.3	3.2	6-12	50%	1.1-3.3	33%	3.4-4.7	72%	6.2	1.8	4.4	2.5	1.4	2.4	1.0	1.3	0.1	5.0	0.3	0.5	12.0	4.2-9.0	47%	46.0	0.2
4	Singler	IT	271	2	20:25	12.0	26.7	0.5	6-8	75%	0.5-1.0	50%	0.5-1.5	33%	2.5	1.5	1.0	2.0	1.5	1.5	1.0	0.5	-	1.0	-	0.5	4.5	1.5-2.5	60%	-	-7.2
5	Deck	RM	269	18	19:44	10.1	23.9	1.6	4-6	67%	0.7-1.4	50%	2.2-2.6	85%	3.7	0.7	2.9	1.1	0.6	1.1	0.4	0.7	-	2.2	0.1	0.3	4.8	2.0-4.2	48%	51.0	4.4
6	Garino	BAS	267	8	25:51	10.5	19.9	1.6	4-8	50%	1.4-3.5	40%	1.4-1.6	88%	2.9	0.8	2.1	0.8	1.0	2.5	1.0	1.5	0.1	1.9	0.9	0.1	7.1	2.4-7.0	34%	16.0	5.4
7	Costello	GC	266	22	22:10	10.8	24.2	1.4	4-8	50%	0.9-2.7	33%	1.5-2.0	75%	7.8	2.7	5.1	1.2	0.6	3.2	1.4	1.7	0.1	2.0	1.2	0.3	11.7	4.3-9.6	45%	53.0	6.5
8	Fernandez	RM	266	15	16:08	5.3	16.1	1.8	2-5	40%	1.4-4.1	34%	0.7-0.9	78%	2.3	0.3	2.1	0.5	0.9	1.1	0.4	0.6	0.1	1.0	0.2	-	3.6	1.3-3.1	42%	106.0	23.0
9	Gerun	UNI	264	23	17:46	7.4	20.3	0.7	3-5	60%	-	1.5-2.3	65%	4.4	2.2	2.3	0.6	0.7	1.6	0.7	0.9	-	2.0	0.3	0.2	6.0	2.4-5.2	46%	58.0	7.4	
10	Hanga	FB	264	21	21:29	7.0	15.5	3.7	3-6	50%	0.6-2.0	30%	1.3-1.7	76%	3.8	1.0	2.8	2.0	0.8	2.2	0.9	1.3	-	2.0	0.5	0.2	7.4	2.8-5.9	47%	127.0	14.3
11	Brussino	ZAR	264	23	22:11	9.8	21.4	1.9	4-7	57%	1.5-3.7	41%	1.1-1.3	85%	4.2	0.9	3.3	1.2	1.0	1.7	0.7	1.0	-	1.5	0.1	0.1	6.1	2.2-6.0	37%	126.0	14.5
12	Oriola	FB	264	21	17:26	5.4	15.1	0.9	2-4	50%	0.4-1.4	29%	0.8-2.1	38%	4.7	1.8	2.9	0.6	0.3	1.2	0.5	0.7	-	1.5	0.1	0.1	6.3	2.5-5.4	46%	36.0	6.0
13	Mickey	RM	263	14	16:16	6.7	19.5	0.9	3-5	60%	0.4-1.1	36%	0.9-1.5	60%	4.3	0.8	3.5	1.1	0.6	1.9	0.9	1.0	-	1.4	0.9	0.1	9.1	3.9-9.1	43%	2.0	3.5
14	Garuba Alari	RM	263	22	17:31	4.7	12.9	0.6	2-4	50%	0.2-0.6	33%	0.7-1.2	58%	5.8	1.8	4.0	1.4	0.5	1.9	0.6	1.3	-	1.5	0.9	0.3	8.0	3.1-7.9	39%	73.0	11.5
15	Abalde	VAL	263	23	16:57	7.7	22.4	1.1	3-6	50%	0.7-1.7	41%	1.3-1.7	76%	3.4	1.5	2.0	0.7	0.6	1.0	0.4	0.4	-	1.8	-	-	5.9	2.4-4.7	51%	50.0	6.0
16	Mitrovic	MAN	263	17	16:19	8.4	24.4	2.0	3-6	50%	0-0.1	0%	1.5-2.7	56%	3.9	1.6	2.3	0.8	0.4	1.9	0.9	0.8	-	2.6	0.2	0.2	6.2	2.4-4.9	49%	31.0	3.8
17	Taylor	RM	262	17	16:57	5.4	15.8	0.9	2-4	50%	1.1-2.2	50%	0.5-0.7	71%	1.6	0.2	1.4	0.5	0.3	2.1	0.9	1.1	0.1	0.9	0.1	-	5.7	1.9-4.4	43%	40.0	10.2
18	Ndour	VAL	262	19	16:44	6.0	17.7	0.7	2-5	40%	0.2-0.8	25%	1.7-2.1	81%	3.8	1.5	2.3	0.7	0.6	2.1	1.3	0.8	-	1.8	0.6	0.4	7.2	2.3-5.6	41%	8.0	0.6
19	Bolmaro	FB	262	7	13:01	4.4	16.0	1.6	2-4	50%	0.4-0.9	44%	0.3-0.4	75%	1.1	0.4	0.7	1.1	0.9	1.7	0.7	1.0	0.1	1.0	0.4	0.3	4.6	1.6-3.3	48%	-3.0	-
20	Polonara	BAS	262	23	11:20	4.4	19.0	0.4	2-3	67%	0.5-1.4	36%	0.7-0.9	78%	2.4	1.0	1.4	0.3	0.4	1.1	0.7	0.5	-	0.8	0.2	-	4.5	1.5-3.7	41%	42.0	9.5
21	Radovic	ZAR	262	22	19:27	10.6	25.7	1.1	5-9	56%	0.4-0.9	44%	1.2-2.4	50%	5.1	2.1	3.1	1.2	0.5	2.1	1.1	1.0	0.1	2.1	0.5	0.5	9.0	3.1-7.1	44%	-9.0	-2.2
22	Thompson	UNI	262	22	21:08	8.3	19.0	1.2	3-7	43%	0.9-2.6	35%	1.4-1.8	78%	3.6	1.3	2.4	1.4	1.2	1.4	0.6	0.8	0.1	1.6	0.3	0.3	6.7	2.5-6.1	41%	-53.0	-3.6
23	Shurna	GC	262	22	22:29	9.3	20.0	1.5	3-6	50%	1.3-2.8	46%	1.2-1.5	80%	3.4	1.2	2.2	0.3	0.5	1.5	0.8	0.7	-	1.5	0.4	0.5	6.3	2.5-5.1	49%	24.0	1.7
24	Randolph	RM	262	15	18:19	7.7	19.5	0.6	2-6	33%	1.3-3.7	35%	1.9-2.3	83%	3.4	0.3	3.1	1.1	0.5	1.7	0.5	1.3	-	1.9	0.6	0.1	7.1	2.7-6.3	43%	73.0	10.2
25	Claver	FB	261	14	19:13	4.9	12.3	1.1	2-4	50%	0.7-2.1	33%	0.7-0.9	78%	2.9	0.4	2.6	0.7	1.1	1.2	0.4	0.8	-	0.6	0.5	0.1	6.4	2.4-6.2	39%	36.0	10.4
26	Yusta	IT	261	19	17:09	9.3	25.7	0.9	3-7	43%	1.2-3.0	40%	1.9-2.4	79%	2.1	0.6	1.5	0.9	0.7	1.8	0.9	0.9	-	2.7	0.1	0.2	5.4	2.1-4.5	47%	65.0	7.9
27	Motum	VAL	261	15	14:09	6.6	22.7	0.2	2-5	40%	0.7-1.7	41%	0.9-1.2	75%	2.1	0.9	1.2	0.7	0.3	1.0	0.4	0.6	-	0.8	0.2	0.3	4.9	1.8-3.3	55%	57.0	13.5
28	Clark	BUR	261	23	27:27	12.3	21.7	1.5	5-12	42%	1.3-4.0	33%	1.6-2.5	64%	6.6	1.6	5.0	1.6	0.7	1.8	0.6	1.2	-	2.2	1.1	0.4	9.8	3.7-9.0	41%	50.0	5.1
29	Suarez	UNI	261	20	19:34	5.6	13.4	2.3	2-5	40%	1.0-3.3	30%	1.3-1.6	81%	4.8	1.4	3.4	1.3	0.9	1.0	0.4	0.6	0.1	2.0	0.2	0.1	6.0	2.1-4.6	46%	71.0	5.6
30	White	IT	261	5	23:24	8.8	18.6	0.6	3-6	50%	1.0-2.4	42%	1.4-1.6	88%	4.4	0.8	3.6	1.0	0.8	2.2	0.8	1.4	-	1.0	0.2	0.4	6.2	2.8-7.2	39%	2.0	-1.2
31	Eddie	MUR	260	22	26:34	14.4	25.6	0.6	5-11	45%	3.5-8.0	44%	1.5-1.7	88%	3.2	0.6	2.6	1.3	0.9	2.1	1.2	0.8	0.1	0.9	0.6	0.2	8.7	2.8-7.4	38%	-52.0	-4.5
32	Barreiro	ZAR	260	23	18:40	7.3	18.1	0.7	3-5	60%	0.9-2.9	31%	1.3-1.8	72%	5.0	1.5	3.6	0.8	0.4	1.6	0.9	0.7	-	2.3	0.2	0.3	6.2	2.2-5.0	44%	76.0	6.7
33	Simonovic	UNI	260	2	23:38	7.0	14.3	0.5	2-4	50%	1.5-3.0	50%	1.5-2.5	60%	2.5	0.5	2.0	-	-	1.5	0.5	1.0	-	1.5	-	-	10.0	4.0-7.5	53%	15.0	13.1
34	Smits	FB	260	14	10:02	3.2	14.7	0.4	1-3	33%	0.3-1.5	20%	0.5-0.6	83%	1.6	0.5	1.1	0.5	0.6	1.5	0.7	0.8	-	0.4	0.1	0.1	3.9	1.3-2.5	52%	12.0	5.7
35	Diez	IT	260	22	25:59	8.6	16.1	1.4	3-6	50%	1.5-3.3	45%	1.0-1.2	83%	6.1	1.5	4.6	0.7	0.5	0.7	0.4	0.3	-	1.3	0.1	0.2	7.6	3.1-5.9	53%	29.0	2.4
36	Beiran	GC	260	21	22:21	8.8	19.0	1.5	3-6	50%	1.5-3.5	43%	0.6-1.0	60%	5.0	1.3	3.7	1.1	0.6	1.3	0.5	0.7	0.1	1.5	0.1	0.1	7.1	2.5-5.4	46%	-36.0	-6.5
37	Waczynski	UNI	260	23	17:08	7.7	21.3	0.9	2-5	40%	1.4-3.4	41%	1.3-1.4	93%	1.3	0.4	0.8	0.5	0.5	1.4	0.7	0.7	-	1.4	-	0.1	5.7	2.0-4.7	43%	39.0	2.9
38	Morgan	JOV	260	19	20:12	9.5	22.1	0.9	3-6	50%	1.4-3.8	37%	2.3-2.7	85%	3.6	1.0	2.7	1.0	0.6	2.3	1.2	1.0	-	2.0	0.3	0.1	8.3	2.7-6.0	45%	70.0	11.3
39	Doornekamp	VAL	260	22	16:37	5.4	15.9	1.2	2-4	50%	1.0-2.4	42%	0.9-1.1	82%	2.0	0.6	1.4	0.7	0.6	2.1	0.7	1.3	-	1.4	0.1	0.1	5.5	2.0-4.5	44%	54.0	4.4
40	Hunt	MUR	260	21	14:30	5.7	19.1	0.2	3-4	75%	-	0.6-1.2	50%	3.8	1.4	2.3	0.8	0.5	2.6	1.2	1.4	-	1.2	0.5	0.4	7.0	2.3-5.1	45%	-3.0	1.4	
41	Bobrov	FUE	260	21	18:45	7.4	18.5	0.9	3-5	60%	0.1-0.4	25%	1.7-2.4	71%	3.2	1.0	2.2	1.2	0.5	2.5	1.0	1.6	-	1.9	0.3	0.4	7.3	2.7-6.1	44%	-15.0	-2.4
42	Walker	AND	259	23	22:37	6.8	14.3	1.7	3-6	50%	0.9-2.9	31%	0.6-0.8	75%	2.1	0.7	1.5	0.9	0.9	1.4	1.1	0.3	-	0.9	0.2	0.3	7.4	2.8-6.7	42%	70.0	6.1
43	Mockevicius	FUE	259	20	17:44	7.1	18.8	0.8	3-5	60%	-	1.2-2.6	46%	5.5	2.2	3.3	1.0	0.7	2.7	1.4	1.3	0.2	2.1	0.7	0.2	9.3	3.4-7.3	47%	-87.0	-13.5	
44	Benzing	ZAR	259	23	21:06	10.5	23.7	0.7	3-9	33%	1.8-4.8	38%	2.1-2.5	84%	1.8	0.3	1.6	1.0	0.9	1.7	1.1	0.7	0.1	2.1	0.4	0.1	6.4	2.1-5.5	38%	8.0	-1.6
45	Sy	AND	258	19	21:56	7.1	15.5	0.8	2-4	50%	1.1-2.3	48%	1.4-1.8	78%	3.8	0.8	3.0	1.0	1.1	2.4	1.2	1.2	0.1	1.5</							







Guards

		InStat Index	Matches	Minutes	Points	/100 poss	Assists	Field goals				3-pt field goals				Free throws				REBOUNDS					FOULS					BLK	BLK against	Opp Points	Opponents field goals	+/-	Net rating
								3-8	38%	1.0-2.0	50%	1.0-1.0	100%	Total	Offense	Defense	Turnov	Steals	Fouls	Reason	Unreason	Tech	Against												
1	Mekel	UNI	281	1	23:44	8.0	16.0	11.0	3-8	38%	1.0-2.0	50%	1.0-1.0	100%	4.0	1.0	3.0	3.0	1.0	3.0	3.0	-	-	2.0	-	-	7.0	2.0-7.0	29%	21.0	40.0				
2	Heurtel	FB	275	2	17:55	7.5	20.8	5.5	4-8	50%	0.5-2.5	20%	-	-	3.0	-	3.0	2.5	1.5	1.5	1.0	0.5	-	0.5	-	-	2.0	1.0-3.5	29%	16.0	17.0				
3	Green	RB	273	4	28:21	21.3	36.3	1.3	8-15	53%	2.3-5.5	42%	3.0-3.5	86%	3.8	0.8	3.0	2.5	1.8	1.8	0.8	1.0	-	2.8	-	0.5	5.0	1.8-5.3	34%	12.0	6.2				
4	Thompson	ZAR	271	2	19:14	7.5	18.1	3.0	3-6	50%	-	-	1.5-3.0	50%	7.5	2.0	5.5	1.5	1.0	4.0	0.5	3.0	-	2.5	0.5	0.5	6.5	2.0-5.5	36%	12.0	16.8				
5	Lull	RM	270	14	21:30	12.9	28.2	3.6	4-10	40%	2.0-5.5	36%	2.5-2.6	96%	1.4	0.1	1.3	2.0	0.7	1.4	0.8	0.6	-	2.4	0.1	0.1	5.6	2.1-5.6	38%	94.0	14.0				
6	Henry	BAS	270	19	26:14	11.7	22.1	4.4	4-9	44%	1.1-2.5	44%	1.7-2.3	74%	3.6	1.2	2.5	1.7	1.5	2.7	1.2	1.4	-	2.5	0.1	0.3	9.4	3.2-6.5	49%	41.0	3.1				
7	Campazzo	RM	270	21	21:48	10.0	22.0	5.3	3-7	43%	1.5-3.8	39%	2.9-3.2	91%	2.8	0.4	2.4	2.0	1.0	2.0	0.6	1.4	-	3.9	-	0.2	6.2	2.3-5.6	41%	138.0	14.1				
8	Booker	MUR	269	19	28:38	21.2	35.2	3.8	7-18	39%	2.9-7.8	37%	3.4-4.0	85%	2.6	0.3	2.4	2.8	0.6	2.0	0.8	1.1	-	4.7	0.1	0.6	8.5	3.1-8.1	38%	28.0	1.3				
9	Delaney	FB	268	19	22:29	10.3	21.7	4.0	3-7	43%	1.5-3.8	39%	2.6-3.4	76%	1.9	0.5	1.4	2.2	0.7	3.0	0.7	2.2	0.1	3.6	-	0.2	4.2	1.3-3.5	37%	102.0	11.8				
10	Huertas	IT	267	22	28:28	13.1	22.3	8.6	5-11	45%	1.0-3.1	32%	2.4-2.5	96%	2.5	0.6	1.9	3.6	1.1	2.0	1.0	0.9	0.1	3.1	0.1	0.6	9.3	3.3-8.1	41%	102.0	6.1				
11	Higgins	FB	267	16	25:26	11.1	20.9	2.4	4-9	44%	0.9-2.7	33%	2.6-3.4	76%	2.0	0.4	1.6	1.6	1.3	2.3	0.9	1.4	-	3.6	0.1	0.6	8.9	3.3-6.8	49%	142.0	18.4				
12	Hannah	AND	266	23	22:29	12.1	25.1	4.0	4-8	50%	1.4-3.9	36%	3.2-3.5	91%	1.9	0.3	1.6	2.0	1.3	2.5	0.7	1.6	-	3.7	-	0.3	6.6	2.5-6.4	39%	144.0	11.7				
13	Van Rossom	VAL	266	14	20:45	7.7	18.6	4.1	3-6	50%	1.1-2.8	39%	0.7-0.9	78%	1.6	0.4	1.3	1.8	0.4	0.8	0.4	0.4	0.1	1.2	-	0.3	5.5	2.1-6.0	35%	53.0	10.0				
14	Carroll	RM	266	20	17:23	10.7	28.6	0.6	4-9	44%	1.8-4.4	41%	1.2-1.5	80%	1.7	0.5	1.2	0.6	0.4	1.4	0.8	0.7	0.1	1.4	0.1	0.3	5.3	1.9-4.2	45%	63.0	6.6				
15	Laprovittola	RM	266	23	15:58	6.4	18.7	3.4	2-5	40%	1.3-2.8	46%	1.2-1.6	75%	2.0	0.1	1.9	1.5	0.4	1.3	0.8	0.5	-	1.8	-	0.3	4.9	1.8-4.6	39%	99.0	12.9				
16	Loyd	VAL	265	17	22:37	12.7	27.3	1.9	4-9	44%	1.9-4.5	42%	2.1-2.4	88%	1.6	0.3	1.3	1.3	1.3	2.5	0.8	1.5	-	2.7	-	0.2	7.8	2.5-5.2	48%	78.0	9.3				
17	Shields	BAS	265	21	27:46	11.6	20.4	1.6	4-9	44%	1.3-3.9	33%	2.1-2.6	81%	4.3	1.6	2.8	0.7	1.1	1.7	0.7	1.0	-	2.1	0.2	0.2	8.4	2.9-6.6	44%	64.0	3.3				
18	Prepelic	JOV	265	23	27:55	22.3	36.7	3.4	7-14	50%	2.9-7.6	38%	6.0-6.9	87%	1.9	0.4	1.5	2.4	0.7	2.1	0.8	1.2	0.4	6.4	-	0.6	8.8	3.1-7.1	44%	-42.0	-4.0				
19	Ennis	ZAR	265	15	21:06	11.2	24.7	3.3	4-9	44%	1.7-4.2	40%	1.7-2.5	68%	3.5	0.5	2.9	1.5	1.1	1.3	0.3	1.0	0.1	2.5	-	0.5	5.8	2.1-5.0	42%	55.0	6.7				
20	Christon	BAS	264	4	24:11	9.0	18.6	3.0	4-7	57%	0.8-2.3	35%	1.3-2.0	65%	3.0	0.8	2.3	2.3	1.5	3.3	0.5	2.8	-	1.5	-	-	7.0	2.0-5.8	34%	10.0	1.2				
21	Causeur	RM	264	21	16:10	6.8	19.1	1.8	2-5	40%	0.6-2.2	27%	1.2-1.6	75%	1.6	0.4	1.2	1.0	0.7	1.2	0.6	0.6	-	1.6	0.1	0.3	5.3	2.0-5.0	40%	71.0	7.3				
22	Bouteille	UNI	263	23	28:04	17.3	29.6	1.4	7-13	54%	2.4-5.2	46%	1.7-2.2	77%	3.8	1.0	2.7	1.1	0.6	1.3	0.6	0.7	-	2.2	0.1	0.4	7.2	2.4-6.4	38%	-70.0	-7.0				
23	Duran	MUR	263	7	2:39	1.1	17.4	0.3	0-1	0%	0.1-0.6	17%	0.4-0.6	67%	0.1	-	0.1	-	-	0.4	0.1	0.3	-	0.3	-	-	1.1	0.3-0.7	43%	12.0	24.3				
24	Randle	FUE	263	1	12:02	7.0	25.9	4.0	3-6	50%	0-2.0	0%	1.0-2.0	50%	1.0	-	1.0	2.0	-	1.0	1.0	-	-	4.0	-	-	6.0	2.0-3.0	67%	7.0	19.4				
25	Kuric	FB	263	23	20:44	8.4	19.2	1.4	3-7	43%	1.3-3.7	35%	1.6-1.7	94%	2.1	0.5	1.6	0.9	0.9	1.4	0.7	0.7	-	1.4	0.1	0.1	7.4	2.7-6.2	44%	61.0	5.4				
26	Vives	VAL	263	20	18:18	6.8	18.4	2.4	2-5	40%	1.2-3.2	38%	1.3-1.4	93%	1.7	0.3	1.5	1.1	1.3	2.0	1.0	1.0	0.1	1.8	0.4	0.1	7.8	2.6-6.3	41%	102.0	13.9				
27	Sharif-Cook	GC	263	18	27:54	7.4	12.9	7.5	2-6	33%	1.3-4.3	30%	1.2-1.6	75%	1.4	0.1	1.3	1.9	1.4	2.2	1.2	1.0	0.1	2.7	-	0.2	7.7	2.8-7.2	39%	16.0	1.2				
28	Fernandez	UNI	263	21	22:08	9.8	20.8	4.4	3-8	38%	1.1-3.3	33%	2.4-2.9	83%	2.2	0.5	1.7	1.8	1.7	2.3	0.8	1.5	0.1	3.7	-	0.4	7.8	2.6-6.2	42%	40.0	1.0				
29	Ribas	FB	262	11	18:01	4.4	11.3	3.7	1-3	33%	0.8-2.3	35%	0.8-0.9	89%	1.4	0.3	1.1	1.3	0.7	1.2	0.2	1.0	-	1.3	0.1	0.1	4.0	1.4-3.6	39%	24.0	5.9				
30	Marinkovic	VAL	262	17	11:57	5.5	22.6	0.5	2-4	50%	0.9-2.8	32%	0.8-0.9	89%	0.8	0.3	0.5	0.6	0.5	0.9	0.2	0.5	-	1.1	0.1	0.2	3.5	1.0-3.3	30%	85.0	19.3				
31	Harper	GC	261	22	25:28	13.2	25.4	2.1	5-11	45%	1.7-4.2	40%	1.8-2.1	86%	2.1	0.6	1.5	2.4	0.6	3.0	1.3	1.6	-	2.3	-	0.5	8.8	3.0-6.8	44%	54.0	4.5				
32	San Emeterio	VAL	261	19	19:21	7.7	19.8	1.5	2-5	40%	0.8-2.2	36%	2.1-2.4	88%	2.4	0.5	2.0	1.1	0.4	1.0	0.4	0.6	-	2.7	0.1	0.4	6.1	2.4-5.4	44%	67.0	8.3				
33	Seeley	ZAR	261	23	24:20	11.0	21.5	2.8	4-8	50%	1.0-3.1	32%	2.7-3.3	82%	3.0	0.9	2.2	1.7	1.0	1.8	0.7	1.1	0.1	3.1	-	0.1	7.4	2.5-5.5	45%	79.0	6.2				
34	Colom Barrufet	VAL	261	22	16:02	7.0	20.9	3.4	3-6	50%	0.8-2.9	28%	1.1-1.4	79%	1.2	0.1	1.1	1.6	0.4	1.5	0.9	0.6	-	2.1	-	0.4	5.5	2.0-4.6	43%	22.0	-0.7				
35	Bassas	BUR	261	23	21:36	8.4	18.6	4.6	3-6	50%	1.8-4.3	42%	0.7-1.1	64%	2.7	0.5	2.2	2.0	0.7	2.0	0.7	1.4	0.1	2.1	-	0.2	6.6	2.1-5.7	37%	56.0	6.0				
36	Janning	BAS	261	23	24:13	8.9	18.0	1.9	3-7	43%	2.3-5.7	40%	0.4-0.5	80%	1.4	0.2	1.2	1.0	0.7	1.7	0.7	1.0	0.1	0.9	0.1	-	7.7	2.7-5.5	49%	10.0	0.7				
37	Adams	UNI	261	22	23:43	12.9	26.7	2.4	4-10	40%	2.2-6.0	37%	2.6-3.2	81%	2.3	0.4	1.9	2.0	0.6	2.7	1.3	1.4	0.1	2.9	0.3	0.4	10.4	3.5-8.5	41%	-23.0	0.6				
38	Abrines Redondo	FB	260	18	19:01	5.7	13.9	0.7	2-5	40%	1.3-3.5	37%	0.2-0.4	50%	2.0	0.4	1.6	0.4	0.4	2.0	0.8	1.1	0.1	0.8	0.3	0.1	7.9	2.6-6.1	43%	56.0	7.4				
39	McFadden	BUR	260	23	23:30	12.2	24.7	2.4	4-9	44%	2.8-6.8	41%	1.5-2.0	75%	1.9	0.4	1.4	1.2	0.9	1.7	0.5	1.2	0.1	2.3	0.1	0.3	6.5	2.5-5.9	42%	-18.0	-1.9				
40	Colom	AND	260	12	1:59	0.3	7.3	0.2	-	-	0-0.2	0%	-	-	0.3	-	0.3	-	0.1	0.2	-	0.2	-	-	-	-	1.1	0.3-0.5	60%	1.0	5.3				
41	Diaz	UNI	260	19	20:19	5.5	12.8	3.0	2-5	40%	1.0-3.0	33%	1.1-1.3	85%	2.9	0.7	2.2	0.7	0.8	2.5	1.2	1.3	-	2.3	-	-	6.3	2.1-5.7	37%	27.0	1.3				
42	Ferrari	MAN	260	6	25:50	14.7	25.8	6.0	5-12	42%	2.8-6.2	45%	2.8-3.2	88%	3.2	0.5	2.7	3.5	0.5	2.8	1.2	1.3	-	4.8	-	0.3	8.0	2.5-5.0	50%	5.0	2.5				
43	Vildoza	BAS	260	12	23:59	7.4	14.9	3.3	3-7	43%	1.0-3.8	26%	1.1-1.1	100%	2.7	0.3	2.4	2.0	0.9	2.3	1.3	1.1	-	1.7	0.2	0.2	9.2	3.0-5.7	53%	-3.0	-1.9				
44	Benite	BUR	260	23	23:20	13.4	28.0	1.7	4-10	40%	2.2-5.3	42%	2.5-2.9	86%	2.5	0.3	2.2	1.3	0.7	2.9	1.1	1.7	-	2.5	-	0.4	9.6	3.2-7.1	45%	46.0	4.4				
45	Rabaseda	GC	259	14	14:51	4.6	15.5	0.8	2-3	67%	1.0-2.0	50%	0.4-0.6	67%	2.6	0.8	1.8	0.4	0.5	1.8	0.9	0.9	-	0.8	0.4	0.2	4.6								



Guards

		InStat Index	Matches	Minutes	Points	/100 poss	Assists	Field goals	3-pt field goals	Free throws	REBOUNDS				FOULS					BLK	BLK against	Opp Points	Opponents field goals	+/-	Net rating						
											Total	Offense	Defense	Turnov	Steals	Fouls	Reason	Unreason	Tech							Against					
48	Avramovic	EST	259	21	18:09	9.3	24.6	1.4	4-9	44%	1.1-3.4	32%	1.0-1.3	77%	2.4	0.7	1.7	1.5	0.7	1.9	0.7	1.1	-	2.0	0.1	0.8	4.4	1.6-3.6	44%	-40.0	-3.1
49	Alocen	ZAR	259	23	20:15	6.9	15.9	3.3	3-6	50%	0.9-2.7	33%	0.7-1.1	64%	2.7	0.4	2.3	1.8	0.4	1.5	0.7	0.9	-	1.6	0.1	0.3	6.5	2.3-5.5	42%	31.0	1.5
50	Sanadze	FUE	259	1	16:24	8.0	21.1	2.0	3-5	60%	2.0-4.0	50%	-	-	3.0	1.0	2.0	1.0	-	4.0	-	4.0	-	-	-	-	5.0	2.0-4.0	50%	7.0	6.1
51	Miguel	ZAR	259	19	19:51	4.3	10.2	4.1	1-3	33%	0.7-1.6	44%	1.0-1.2	83%	2.3	0.6	1.7	1.0	0.5	1.4	0.2	1.1	-	1.9	0.1	0.1	5.4	1.7-4.8	35%	76.0	9.4
52	Stauskas	BAS	259	18	17:36	7.4	20.6	1.6	2-6	33%	1.3-4.2	31%	1.3-1.6	81%	1.4	0.2	1.2	0.9	0.4	1.3	0.6	0.6	-	0.8	0.2	0.2	5.6	1.9-4.4	43%	-26.0	-5.5
53	Senglin	AND	258	23	21:09	8.7	19.6	2.7	3-7	43%	0.9-2.9	31%	1.8-1.9	95%	2.2	0.5	1.7	1.5	0.6	1.8	0.8	1.0	-	2.3	-	0.2	7.5	2.6-5.3	49%	-57.0	-5.7
54	Lopez	IT	258	22	12:15	3.9	15.7	1.9	1-3	33%	0.6-2.0	30%	0.6-1.0	60%	1.0	0.1	0.9	1.0	0.5	1.5	0.7	0.7	-	1.3	0.1	0.1	4.1	1.2-3.3	36%	-17.0	0.3
55	Sastre	VAL	258	15	13:10	4.3	16.1	0.7	1-3	33%	0.9-2.0	45%	0.7-0.8	88%	0.6	0.1	0.5	0.7	0.7	0.8	0.6	0.2	-	1.0	0.1	0.1	4.4	1.7-4.1	41%	13.0	3.5
56	Todorovic	AND	258	23	18:35	8.7	22.1	1.6	3-8	38%	1.6-4.2	38%	1.1-1.5	73%	3.0	0.7	2.3	2.2	0.4	1.0	0.6	0.4	-	1.5	-	0.4	5.5	2.0-4.0	50%	-5.0	-0.7
57	Massenat	AND	258	23	20:50	6.9	15.8	2.3	2-6	33%	0.8-2.6	31%	1.2-1.6	75%	1.6	0.4	1.3	1.1	0.4	2.3	0.9	1.3	-	1.7	-	0.3	7.0	2.2-5.6	39%	46.0	4.5
58	Nacic	RM	258	9	9:16	2.8	14.2	0.6	1-3	33%	0.7-1.4	50%	0.1-0.2	50%	0.9	0.3	0.6	1.1	0.2	0.8	0.2	0.6	-	0.3	0.2	0.2	3.9	1.7-3.0	57%	4.0	6.3
59	Salin	IT	258	21	23:44	9.4	19.0	1.9	3-8	38%	2.2-6.6	33%	1.4-1.5	93%	1.5	0.4	1.1	1.0	1.0	1.5	0.7	0.8	0.2	3.1	-	0.1	7.1	2.6-5.6	46%	37.0	1.1
60	Anderson	FUE	258	15	23:20	12.7	25.3	1.3	4-10	40%	2.5-6.0	42%	1.4-1.7	82%	1.6	0.1	1.5	1.2	0.7	2.3	1.3	0.8	-	1.1	0.1	0.1	9.1	2.9-6.3	46%	-37.0	-8.7
61	Wroten	JOV	258	4	20:26	11.3	27.1	4.5	4-11	36%	0.3-2.5	12%	2.5-4.3	58%	2.8	0.8	2.0	2.5	0.8	1.3	0.3	1.0	-	3.0	-	1.0	4.3	1.8-4.5	40%	-37.0	-19.7
62	Cvetkovic	MAN	258	12	19:40	9.3	23.2	4.0	3-6	50%	1.1-2.8	39%	3.0-3.4	88%	1.3	0.3	1.0	1.4	0.4	2.5	1.1	1.4	-	3.8	-	0.3	5.3	1.8-4.3	42%	-12.0	-2.1
63	Slaughter	RB	258	22	23:18	13.3	27.3	2.4	5-11	45%	1.9-4.9	39%	1.4-1.6	88%	2.2	0.3	1.9	2.1	0.9	1.8	0.8	0.9	-	2.1	0.1	0.4	8.1	2.7-5.7	47%	-51.0	-4.7
64	Garcia	BAS	258	10	11:57	1.7	6.8	2.2	1-3	33%	0.3-1.8	17%	0.2-0.4	50%	1.6	0.4	1.2	1.3	1.0	0.8	0.3	0.4	-	1.0	0.1	-	4.5	1.6-4.2	38%	-6.0	-2.8
65	Dimitrijevic	JOV	258	21	18:15	8.0	20.6	3.4	3-6	50%	0.6-2.0	30%	1.4-1.6	88%	1.7	0.3	1.4	2.2	0.6	2.3	1.1	1.1	0.1	1.7	0.1	0.4	8.4	2.8-5.8	48%	-18.0	-0.8
66	Pressey	EST	257	23	25:58	7.9	14.4	5.1	3-8	38%	1.6-5.3	30%	1.0-1.3	77%	2.6	0.3	2.3	2.1	2.4	2.5	1.1	1.4	-	2.2	0.1	0.2	6.5	2.1-5.7	37%	-93.0	-8.5
67	Tokoto	BUR	257	13	23:40	7.5	15.6	1.7	3-7	43%	0.2-0.8	25%	1.0-1.9	53%	5.7	1.6	4.1	1.0	1.1	2.6	0.9	1.7	-	1.6	0.2	0.2	8.2	2.9-6.3	46%	14.0	8.4
68	Bellas	FUE	257	19	25:50	9.7	17.8	5.5	3-9	33%	0.7-3.0	23%	2.4-3.6	67%	3.2	0.8	2.4	1.8	0.9	2.6	1.2	1.4	-	4.0	-	0.3	9.0	2.8-7.0	40%	-69.0	-11.6
69	Perez	MAN	257	21	23:24	6.1	12.6	7.1	2-6	33%	0.5-2.5	20%	1.6-2.1	76%	2.1	0.6	1.5	2.2	0.9	2.3	1.1	1.1	-	3.3	-	0.3	7.1	2.4-6.3	38%	-27.0	-2.1
70	Jelinek	AND	257	21	18:05	8.4	21.9	1.0	3-7	43%	1.4-4.1	34%	1.2-1.4	86%	1.8	0.3	1.5	0.9	0.4	1.9	0.8	1.1	-	1.1	0.1	0.4	5.6	1.9-4.6	41%	-33.0	-2.7
71	Brown	BIL	257	19	21:09	12.1	27.7	2.6	4-11	36%	1.0-3.6	28%	2.4-2.9	83%	1.1	0.3	0.8	2.4	0.8	2.8	1.0	1.8	0.1	3.0	-	0.6	7.2	2.2-5.5	40%	17.0	4.8
72	Toolson	MAN	256	13	25:55	15.0	27.9	2.2	5-11	45%	2.5-5.5	45%	2.3-2.5	92%	2.0	0.2	1.9	2.5	0.9	1.2	0.5	0.7	0.1	2.4	0.2	0.2	11.3	4.1-8.8	47%	-23.0	-4.2
73	Zisis	JOV	256	17	21:32	6.1	13.1	6.2	2-6	33%	0.2-1.6	13%	1.7-1.8	94%	2.4	0.5	1.9	1.7	0.3	2.8	1.1	1.6	0.1	2.7	-	0.2	8.1	2.4-6.0	40%	-45.0	-4.9
74	Oliver	RB	256	22	14:20	5.6	18.8	2.3	2-4	50%	0.9-2.2	41%	1.0-1.1	91%	1.7	0.5	1.2	1.2	0.5	1.6	0.9	0.7	0.1	1.2	-	0.1	3.7	1.3-3.9	33%	-6.0	3.0
75	Davis	MAN	256	5	20:37	12.0	28.2	0.4	5-12	42%	0.8-3.8	21%	1.2-1.8	67%	1.8	0.4	1.4	1.2	1.0	2.6	1.2	1.2	-	2.2	-	1.2	7.6	2.6-6.0	43%	-29.0	-9.5
76	Gonzalez	BAS	256	9	4:25	0.4	4.8	0.2	0-1	0%	0-0.7	0%	0.4-0.4	100%	0.2	0.1	0.1	0.2	-	0.4	0.3	0.1	-	0.3	0.1	-	1.7	0.6-1.0	60%	-9.0	-16.0
77	Scrubbs	EST	256	23	25:24	9.4	17.6	3.1	3-7	43%	1.4-3.7	38%	2.4-2.9	83%	2.2	0.6	1.6	1.7	0.9	2.0	0.8	1.1	-	3.0	0.1	0.3	6.6	2.3-5.1	45%	-90.0	-6.9
78	Townes	MUR	256	14	18:09	6.2	16.5	1.1	3-6	50%	0.4-1.4	29%	0.8-0.9	89%	1.6	0.5	1.1	0.6	0.9	1.6	0.9	0.8	0.1	0.6	-	0.4	6.9	2.3-6.0	38%	-26.0	-3.3
79	Fitipaldo	BUR	256	23	18:48	7.4	19.0	3.3	2-6	33%	1.3-3.6	36%	1.1-1.2	92%	1.4	0.3	1.1	1.3	0.5	2.1	0.7	1.3	0.1	2.5	-	0.1	5.6	2.0-4.5	44%	-89.0	-7.1
80	Larentzakis	MUR	255	19	18:23	8.7	22.6	2.7	3-8	38%	1.2-4.3	28%	1.9-2.3	83%	2.8	0.6	2.2	2.1	0.6	3.0	0.9	2.0	0.2	2.5	0.1	0.5	9.1	3.0-6.0	50%	-52.0	-5.3
81	Dragic	BAS	255	4	13:03	4.8	17.9	0.3	2-6	33%	0.5-3.8	13%	0.8-0.8	100%	0.5	-	0.5	1.3	0.5	2.0	0.8	1.3	-	1.0	-	0.8	4.3	1.5-3.5	43%	15.0	13.3
82	Douglas	EST	255	11	20:30	7.5	17.0	2.4	3-9	33%	1.4-4.6	30%	0.5-0.6	83%	2.7	0.7	2.0	1.4	0.7	1.9	0.7	1.2	-	1.4	-	0.4	4.6	1.6-3.7	43%	-71.0	-20.7
83	Rowland	FUE	255	11	19:47	6.0	14.0	3.5	2-7	29%	0.5-1.5	33%	0.8-0.9	89%	1.6	0.6	1.1	1.6	1.3	1.7	0.6	1.0	-	1.7	-	0.4	5.0	1.6-4.4	36%	-77.0	-16.1
84	Toupane	UNI	255	20	17:16	6.3	17.6	1.1	2-6	33%	0.6-2.3	26%	1.3-1.5	87%	3.1	0.3	2.8	1.3	0.5	1.1	0.5	0.7	-	1.1	0.2	0.3	5.5	2.0-4.1	49%	-29.0	-3.1
85	Radicevic	MUR	255	17	14:31	4.2	14.1	2.0	2-4	50%	0.6-1.9	32%	0.2-0.4	50%	1.2	0.1	1.1	0.9	0.2	2.2	0.8	1.2	-	1.4	-	0.1	6.5	2.2-4.9	45%	-11.0	-3.8
86	Sipahi	RB	255	23	20:11	7.3	17.7	3.8	3-6	50%	0.5-2.0	25%	1.6-2.3	70%	2.3	0.5	1.8	2.1	1.0	2.3	1.1	1.1	-	3.1	-	0.3	6.9	2.3-5.1	45%	-62.0	-7.1
87	Calloway	OC	255	17	19:08	6.1	15.6	3.6	2-4	50%	1.2-2.8	43%	1.4-1.4	100%	1.8	0.3	1.5	1.4	0.5	1.6	0.7	0.8	-	1.8	-	0.1	7.7	2.8-5.9	47%	-9.0	-1.4
88	Richotti	FUE	255	19	15:21	5.1	15.7	2.1	2-4	50%	0.8-2.7	30%	1.1-1.3	85%	2.0	0.4	1.6	1.7	0.8	2.0	1.0	1.0	-	1.7	0.1	0.1	6.5	1.9-5.5	35%	-68.0	-8.9
89	Zagars	JOV	255	21	9:07	2.5	12.7	1.6	1-3	33%	0.3-1.5	20%	0.3-0.5	60%	0.5	0.2	0.2	0.9	0.2	1.2	0.4	0.8	-	0.8	-	0.2	2.9	1.0-2.5	40%	25.0	9.0
90	Pauli	GC	254	17	12:44	4.3	15.8	0.9	1-3	33%	0.3-1.1	27%	1.1-1.4	79%	1.5	0.1	1.4	0.6	0.1	1.1	0.5	0.5	-	1.2	0.1	0.1	5.2	1.9-4.5	42%	-36.0	-12.0
91	Krejci	ZAR	254	18	7:40	3.2	19.3	0.5	1-2	50%	0.3-0.9	33%	0.5-0.7	71%	1.2	0.3	0.8	0.6	0.2	1.8	0.7	1.1	-	0.7	0.1	-	3.9	1.1-2.4	46%	5.0	4.0
92	Arroyo	EST	254	6	7:19	1.2	7.5	0.7	0-2	0%	0.3-1.5	20%	0.2-0.3	67%	0.7	-	0.7	0.5	0.3	1.5	1.2	0.3	-	0.2	-	-	1.7	0.3-1.2	25%	4.0	5.0
93	Konate	IT</																													





## Centers

		Field goals		Pick'n'rolls Handler	Pick'n'rolls Roller	Pick'n'pops		Post ups		Isolations		Catch and shoots		Catch and drives		Screen off		Hand off		Transitions		Cuts		Putbacks							
1	Sheradini	IT	6.9-10.5	66%	0.1-0.1	100%	1.4-2.0	70%	-			2.2-3.6	61%	0.1-0.1	100%	0.1-0.1	100%	0.6-0.7	86%	0.1-0.2	50%	0.4-0.4	100%	1.3-1.9	68%	0.8-1.3	62%				
2	Tavares	RM	3.0-4.4	68%	-	-	1.1-1.6	69%	-			0.2-0.4	50%	-	-	-	-	0.1-0.1	100%	0	-0.1	0%	0.1-0.1	100%	0.9-1.0	90%	0.6-0.9	67%			
3	Dubljevic	VAL	4.0-7.8	51%	-	-	0.3-0.6	50%	0.5-1.1	45%	1.4-2.4	58%	0.1-0.2	50%	0.1-0.2	50%	0.1-0.2	50%	0.2-0.4	50%	-	-	0.3-0.7	43%	0.5-0.8	63%					
4	Tomic	FB	4.1-6.6	62%	-	-	1.2-2.0	60%	0.1-0.2	50%	1.2-2.2	55%	-	0	-0.1	0%	0.1-0.1	100%	-	0.2-0.3	67%	0.1-0.1	100%	0.7-0.9	78%	0.6-0.6	100%				
5	Davies	FB	4.1-7.6	54%	-	-	0.4-0.7	57%	0.5-0.8	63%	0.8-1.6	50%	0.2-0.2	100%	0.3-1.0	30%	0.3-0.4	75%	0.2-0.3	67%	0.1-0.2	50%	0.4-0.6	67%	0.3-0.5	60%	0.6-1.0	60%			
6	Mejri	RM	1.5-3.8	39%	-	-	0.5-1.0	50%	0	-0.8	0%	-	-	0	-0.8	0%	-	-	-	-	-	-	-	1.0-1.0	100%	-	-				
7	Omic	JOV	4.8-8.6	56%	-	-	1.2-1.7	71%	0.1-0.3	33%	0.7-1.5	47%	0.1-0.1	100%	0.1-0.5	20%	0	-0.1	0%	0.1-0.3	33%	0.2-0.4	50%	0.1-0.2	50%	0.9-1.5	60%	1.1-1.8	61%		
8	Tobey	VAL	2.9-5.5	53%	-	-	1.0-1.6	63%	0.1-0.5	20%	0.1-0.3	33%	0	-0.1	0%	0.2-0.9	22%	-	0.1-0.1	100%	0	-0.2	0%	0	-0.1	0%	0.7-0.9	78%	0.7-0.8	88%	
9	Musli	AND	3.9-7.4	53%	-	-	0.9-1.6	56%	0.2-0.2	100%	1.4-2.5	56%	0	-0.1	0%	0.1-0.4	25%	-	0.2-0.2	100%	0.1-0.2	50%	0.1-0.1	100%	0.7-1.0	70%	0.5-1.0	50%			
10	Diagne	AND	4.3-6.5	66%	-	-	1.2-1.3	92%	0.9-1.7	53%	0.1-0.2	50%	0.1-0.2	50%	0.3-1.1	27%	0.1-0.1	100%	0.1-0.2	50%	0	-0.1	0%	0.4-0.4	100%	0.3-0.5	60%	0.6-0.8	75%		
11	Lima	BUR	3.4-5.7	60%	-	-	1.0-1.5	67%	0.1-0.3	33%	0.4-1.1	36%	-	0	-0.2	0%	-	-	0.1-0.1	100%	0.1-0.2	50%	0.2-0.3	67%	0.7-0.7	100%	0.8-1.3	62%			
12	Pustovyi	FB	1.8-2.4	75%	-	-	0.2-0.2	100%	-	-	0.2-0.4	50%	-	0.4-0.4	100%	0	-0.2	0%	-	-	0.2-0.2	100%	-	-	0.4-0.6	67%	0.4-0.4	100%			
13	Reyes	RM	1.6-3.9	41%	-	-	0.1-0.4	25%	0.2-0.5	40%	0.4-0.9	44%	0.1-0.1	100%	0.4-0.6	67%	-	-	0.2-0.2	100%	-	0	-0.1	0%	0	-0.1	0%	0.4-1.1	36%		
14	Eric	BAS	3.1-5.1	61%	0.1-0.1	100%	0.6-1.1	55%	-	-	0.5-1.1	45%	0.1-0.1	100%	0	-0.1	0%	0.1-0.1	100%	0	-0.1	0%	0	-0.1	0%	0.4-0.5	80%	0.5-0.7	71%	0.8-1.2	67%
15	Kravish	MAN	5.2-9.5	55%	0.1-0.1	100%	2.1-3.1	68%	0.4-0.8	50%	0.2-0.6	33%	0	-0.1	0%	0.5-1.3	38%	0.1-0.1	100%	0	-0.1	0%	0.1-0.2	50%	0.1-0.3	33%	1.1-1.6	69%	0.5-1.2	42%	
16	Kravic	OC	5.7-9.6	59%	0	-0.1	0%	2.0-2.8	71%	0.4-0.7	57%	0.4-1.0	40%	0.3-0.6	50%	-	-	0.4-0.5	80%	0.1-0.2	50%	0.1-0	0%	0.4-0.5	80%	0.9-1.5	60%	0.7-1.4	50%		
17	Balvin	BIL	3.2-5.7	56%	-	-	0.9-1.3	69%	0	-0.2	0%	0.9-1.9	47%	-	0.3-0.4	75%	-	-	0.2-0.3	67%	-	-	0.2-0.2	100%	0.4-0.5	80%	0.4-0.7	57%			
18	Fall	BAS	2.3-3.2	72%	-	-	0.4-0.7	57%	-	-	0.4-0.8	50%	-	-	-	-	-	-	-	-	-	0.1-0.1	100%	0.5-0.6	83%	0.7-1.0	70%				
19	Justiz	ZAR	3.4-6.9	49%	-	-	0.8-1.6	50%	0.1-0.1	100%	0.6-1.6	38%	0.1-0.1	100%	0.3-0.4	75%	0.1-0.2	50%	0.1-0.1	100%	-	-	0.3-0.4	75%	0.5-1.2	42%	0.7-1.3	54%			
20	Diop	BAS	1.5-3.3	45%	-	-	0.3-0.6	50%	0.1-0.3	33%	0.1-0.2	50%	-	0.2-0.7	29%	0.1-0.1	100%	0.1-0.1	100%	0.1-0.3	33%	0.1-0.1	100%	0.2-0.4	50%	0.1-0.2	50%	0.1-0.2	50%		
21	Arteaga	EST	4.2-7.0	60%	-	-	0.6-1.3	46%	0.3-0.6	50%	0.2-0.6	33%	-	0.4-0.9	44%	-	-	0.1-0.3	33%	-	-	0.7-0.7	100%	0.6-0.8	75%	1.2-1.7	71%				
22	Labeyrie	VAL	2.6-4.8	54%	-	-	0.3-0.6	50%	0.1-0.3	33%	0.4-0.6	67%	-	0.4-1.2	33%	0	-0.1	0%	0.1-0.2	50%	0	-0.1	0%	0.4-0.6	67%	0.6-0.9	67%	0.3-0.5	60%		
23	Cate	MUR	2.6-3.6	72%	-	-	0.6-0.8	75%	-	-	0.7-1.0	70%	-	-	-	0.1-0.1	100%	0.1-0.1	100%	0.1-0.1	100%	0.2-0.2	100%	0.5-0.7	71%	0.5-0.7	71%				
24	Lammers	BIL	3.3-5.5	60%	-	-	1.2-1.8	67%	0	-0.2	0%	0.1-0.3	33%	-	0.3-0.7	43%	-	-	0.1-0.1	100%	0	-0.1	0%	0.3-0.3	100%	0.7-1.0	70%	0.6-0.8	75%		
25	Elegar	UNI	1.1-1.9	58%	-	-	0.2-0.4	50%	-	-	0.1-0.1	100%	-	-	0	-0.1	0%	-	-	0.1-0.1	100%	0.1-0.1	100%	0.4-0.7	57%	0.3-0.5	60%				
26	Bourousis	GC	2.6-6.7	39%	-	-	0.4-0.8	50%	0.2-0.5	40%	0.8-2.2	36%	0	-0.2	0%	0.5-1.5	33%	0.1-0.3	33%	0.1-0.2	50%	0.2-0.2	100%	0.1-0.1	100%	0.1-0.2	50%	0.3-0.5	60%		
27	Hlinason	ZAR	1.8-3.2	56%	-	-	0.4-0.9	44%	-	-	0.2-0.5	40%	-	-	-	-	-	-	0	-0.1	0%	0.1-0.2	50%	0.7-1.1	64%	0.2-0.4	50%				
28	Llovet	AND	1.9-3.4	56%	0.1-0.1	100%	0.3-0.5	60%	0.1-0.2	50%	0.2-0.6	33%	0.1-0.1	100%	0.1-0.2	50%	0.1-0.3	33%	0.1-0.2	50%	0.1-0.1	100%	0.1-0.1	100%	0.4-0.6	67%	0.2-0.3	67%			
29	Vazquez Gonzalez	ZAR	1.6-3.9	41%	-	-	0.3-0.5	60%	0.3-0.9	33%	0	-0.1	0%	-	0.4-0.8	50%	0.1-0.1	100%	0.1-0.1	100%	0	-0.1	0%	0.1-0.2	50%	0.1-0.3	33%	0.3-0.7	43%		
30	Bogris	IT	1.5-2.8	54%	-	-	0.8-1.2	67%	0.2-0.3	67%	0.1-0.3	33%	-	0.1-0.2	50%	-	-	-	-	0	-0.1	0%	-	0.3-0.5	60%	0	-0.2	0%			
31	Sow	EST	0-0.4	0%	-	-	0	-0.1	0%	-	-	-	-	-	-	-	-	-	-	-	-	-	-	0	-0.1	0%	-	-			
32	Diop	GC	0.3-1.3	23%	-	-	0.3-0.5	60%	-	-	-	-	-	0	-0.3	0%	-	-	-	-	-	-	-	0	-0.3	0%	0	-0.3	0%		
33	Mamadou	RB	2.0-2.9	69%	-	-	1.1-1.4	79%	-	-	0	-0.1	0%	-	-	-	-	-	-	-	-	-	-	0.6-0.7	86%	0.3-0.6	50%				
34	Guerra	IT	1.2-2.3	52%	-	-	0.8-1.3	62%	-	-	0	-0.1	0%	-	0.1-0.1	100%	-	0.1-0.3	33%	0	-0.1	0%	-	0.1-0.1	100%	0.1-0.3	33%				
35	Rivero Fernandez	BUR	2.4-5.1	47%	-	-	0.2-0.5	40%	0.2-0.4	50%	0.3-1.1	27%	-	0.3-0.7	43%	0.2-0.5	40%	0.1-0.3	33%	-	-	0.2-0.2	100%	0.5-0.7	71%	0.4-0.6	67%				
36	Huskic	BUR	2.3-4.8	48%	-	-	0.8-1.2	67%	-	-	0.6-1.1	55%	0.1-0.2	50%	0	-0.2	0%	0	-0.3	0%	0.1-0.2	50%	-	0.3-0.3	100%	0.2-0.6	33%	0.2-0.6	33%		
37	Ehigiator	FUE	1.7-2.7	63%	-	-	0.5-0.9	56%	-	-	0.4-0.5	80%	-	-	-	-	-	0.1-0.1	100%	0.1-0.1	100%	0.2-0.2	100%	0.5-0.6	83%	0.1-0.4	25%				
38	Guerrero	UNI	1.0-2.1	48%	-	-	0.3-0.6	50%	-	-	0	-0.1	0%	-	-	-	-	0	-0.1	0%	-	-	0.1-0.2	50%	0.4-0.8	50%	0.1-0.3	33%			
39	Birgander	JOV	2.7-4.0	68%	-	-	1.0-1.7	59%	-	-	0	-0.3	0%	-	-	0.3-0.3	100%	0.7-0.7	100%	-	-	-	-	-	-	0.7-1.0	70%				
40	Niang	RB	3.4-4.9	69%	-	-	1.6-2.2	73%	0.1-0.1	100%	-	-	-	0	-0.1	0%	-	-	-	-	-	-	0.3-0.4	75%	1.1-1.4	79%	0.3-0.6	50%			
41	Jordan	RB	2.3-5.0	46%	-	-	0.5-0.8	63%	0.2-0.3	67%	0.2-0.8	25%	0.2-0.3	67%	0	-0.2	0%	0	-0.2	0%	-	-	0.2-0.3	67%	0.7-1.3	54%	0.5-0.5	100%			
42	Tumba	MUR	0.8-1.6	50%	-	-	0.3-0.4	75%	-	-	0.1-0.3	33%	-	0	-0.1	0%	-	0	-0.1	0%	0.1-0.1	100%	0	-0.1	0%	0.1-0.3	33%	0.2-0.3	67%		
43	Palacios	EST	3.5-8.5	41%	-	-	0.3-0.7	43%	0.8-2.1	38%	0.2-0.5	40%	0	-0.2	0%	0.8-2.2	36%	0.3-0.7	43%	0.2-0.3	67%	0.1-0.2	50%	0.4-0.7	57%	0.1-0.4	25%	0.2-0.4	50%		
44	Whittington	RB	3.0-6.6	45%	-	-	0.3-0.6	50%	0.2-0.8	25%	0.3-0.6	50%	-	1.0-2.1	48%	0.3-0.5	60%	0	-0.3	0%	0.1-0.3	33%	0.2-0.4	50%	0.3-0.4	75%	0.4-0.7	57%			
45	Spires	OC	0.8-1.9	42%	-	-	0.6-1.0	60%	0.1-0.1	100%	-	-	0	-0.1	0%	-	-	-	-	0	-0.1	0%	-	0	-0.1	0%	0.1-0.4	25%	0	-0.2	0%
46	Salkho	MAN	1.9-3.6	53%	-	-	0.5-0.9	56%	0	-0.1	0%	0	-0.3	0%	-	-	-	0.1-0.1	100%	0.1-0.1	100%	0.1-0.3	33%	0.1-0.1	100%	0.7-1.3	54%	0.3-0.5	60%		
47	Suarez	IT	0.8-2.3	35%	-	-	0	-0.1	0%	0.1-0.1	100%	-	-	0.5-1.6	31%	0.1-0.1	100%	0.1-0.2	50%	-	-	0.1-0.1	100%	0.1-0.2	50%	0	-0.1	0%			





## Forwards

		Field goals	Pick'n'rolls Handler	Pick'n'rolls Roller	Pick'n'pops	Post ups	Isolations	Catch and shoots	Catch and drives	Screen off	Hand off	Transitions	Cuts	Putbacks	
1	Mirotic	FB	5.7-10.7 53%	0.1-0.2 50%	0.2-0.2 100%	0.3-0.7 43%	1.4-2.0 70%	0.2-0.7 29%	0.9-2.1 43%	0.2-0.5 40%	0.7-1.7 41%	0.1-0.3 33%	0.6-1.0 60%	0.7-0.9 78%	0.5-0.5 100%
2	Thompkins	RM	4.8-9.5 51%	-	0.2-0.2 100%	0.1-0.5 20%	1.0-2.1 48%	0.4-0.5 80%	1.1-2.5 44%	0.1-0.5 20%	0.7-1.0 70%	0 -0.1 0%	0.7-0.9 78%	0.2-0.5 40%	0.4-0.5 80%
3	Shengelia	BAS	5.9-12.0 49%	0 -0.1 0%	0.1-0.2 50%	0.2-0.7 29%	1.3-2.7 48%	0.5-0.9 56%	0.7-1.8 39%	0.7-1.4 50%	0.4-0.8 50%	0.1-0.3 33%	0.9-1.2 75%	0.4-0.8 50%	0.6-0.9 67%
4	Singler	IT	5.5-8.0 69%	0.5-0.5 100%	-	-	0 -0.5 0%	0.5-0.5 100%	-	0 -0.5 0%	1.0-2.0 50%	0.5-0.5 100%	1.0-1.0 100%	1.5-1.5 100%	0.5-1.0 50%
5	Deck	RM	3.6-5.8 62%	0.1-0.1 100%	0.1-0.1 100%	0.1-0.1 100%	0.8-1.2 67%	0.1-0.1 100%	0.7-1.4 50%	0.2-0.2 100%	0.2-0.5 40%	0.1-0.1 100%	0.7-1.0 70%	0.6-0.7 86%	0.3-0.3 100%
6	Garino	BAS	3.9-7.6 51%	0.3-0.9 33%	-	-	-	0 -0.1 0%	0.9-2.3 39%	0.5-1.1 45%	0.3-0.6 50%	0.3-0.5 60%	1.1-1.3 85%	0.1-0.3 33%	0.4-0.4 100%
7	Costello	GC	4.2-8.1 52%	0.1-0.1 100%	1.2-2.1 57%	0.6-1.5 40%	0.1-0.2 50%	-	0.5-1.5 33%	0.1-0.1 100%	0.2-0.4 50%	0.1-0.3 33%	0.6-0.7 86%	0.5-0.7 71%	0.4-0.5 80%
8	Fernandez	RM	1.6-4.7 34%	0.1-0.7 14%	-	-	-	0.1-0.3 33%	0.4-1.5 27%	0.1-0.4 25%	0.5-1.3 38%	0.1-0.1 100%	0.3-0.3 100%	-	0 -0.1 0%
9	Gerun	UNI	2.9-4.8 60%	-	0.7-1.2 58%	0.1-0.1 100%	0.4-0.7 57%	0 -0.1 0%	0 -0.1 0%	0 -0.1 0%	-	-	0.2-0.2 100%	0.9-1.2 75%	0.6-1.1 55%
10	Hanga	FB	2.6-5.5 47%	0.6-1.1 55%	-	-	0 -0.1 0%	0.1-0.3 33%	0.3-1.4 21%	0.2-0.4 50%	0.1-0.1 100%	0.2-0.4 50%	0.5-1.0 50%	0.5-0.5 100%	0.1-0.1 100%
11	Brussino	ZAR	3.6-7.0 51%	0.6-1.0 60%	-	-	0.3-0.4 75%	0 -0.1 0%	0.6-1.6 38%	0.1-0.3 33%	0.7-1.4 50%	0.2-0.4 50%	0.6-1.0 60%	0.2-0.3 67%	0.4-0.5 80%
12	Oriola	FB	2.1-3.8 55%	-	0.1-0.2 50%	0.1-0.3 33%	0 -0.1 0%	0.1-0.1 100%	0.4-1.3 31%	0.1-0.1 100%	0.1-0.1 100%	0.1-0.1 100%	0.2-0.3 67%	0.7-0.9 78%	0.3-0.4 75%
13	Mickey	RM	2.7-5.4 50%	-	0.5-0.9 56%	0.2-0.6 33%	0.4-0.7 57%	0 -0.6 0%	0.4-0.8 50%	0.2-0.3 67%	0 -0.1 0%	-	0.2-0.3 67%	0.4-0.7 57%	0.4-0.4 100%
14	Garuba Alari	RM	1.9-3.5 54%	-	0.2-0.5 40%	0.1-0.2 50%	0.1-0.4 25%	0 -0.1 0%	0.1-0.4 25%	0.1-0.1 100%	0.2-0.3 67%	-	0.1-0.3 33%	0.5-0.6 83%	0.4-0.6 67%
15	Abalde	VAL	2.8-5.6 50%	0.4-1.0 40%	-	-	0 -0.2 0%	0.3-0.4 75%	0.4-1.0 40%	0.4-0.7 57%	0.1-0.4 25%	0.3-0.4 75%	0.4-0.6 67%	0.4-0.4 100%	0.3-0.5 60%
16	Mitrovic	MAN	3.4-5.9 58%	-	0.8-1.4 57%	0.2-0.3 67%	0.8-1.5 53%	0.1-0.2 50%	-	0 -0.2 0%	-	0.1-0.1 100%	0.5-0.5 100%	0.7-0.9 78%	0.4-0.8 50%
17	Taylor	RM	1.9-3.6 53%	-	-	-	0.1-0.2 50%	0.1-0.1 100%	1.1-1.9 58%	0.1-0.4 25%	0.1-0.3 33%	-	0.2-0.5 40%	0.2-0.2 100%	-
18	Ndour	VAL	2.1-4.6 46%	0.1-0.1 100%	0.5-0.7 71%	0 -0.1 0%	0.2-0.5 40%	0.2-0.2 100%	0.2-1.0 20%	0.2-0.4 50%	-	0.1-0.2 50%	0.1-0.3 33%	0.5-0.8 63%	0.3-0.5 60%
19	Bolmaro	FB	1.9-3.9 49%	0.9-1.4 64%	-	-	-	0.1-0.4 25%	0.3-0.4 75%	0.1-0.6 17%	0 -0.1 0%	0 -0.1 0%	0.3-0.6 50%	-	-
20	Polonara	BAS	1.6-3.3 48%	-	-	0 -0.1 0%	0.1-0.2 50%	0.1-0.1 100%	0.4-1.2 33%	0.2-0.3 67%	0 -0.1 0%	-	0.3-0.4 75%	0.2-0.4 50%	0.2-0.5 40%
21	Radovic	ZAR	4.5-8.6 52%	-	0.5-0.9 56%	0.2-0.4 50%	0.7-1.8 39%	0.1-0.1 100%	0.4-0.8 50%	0.4-0.5 80%	0.2-0.3 67%	0.1-0.2 50%	0.6-0.8 75%	0.9-1.4 64%	0.6-1.4 43%
22	Thompson	UNI	3.0-7.1 42%	-	0.1-0.2 50%	0.4-0.9 44%	0.7-1.9 37%	-	0.6-1.8 33%	0.1-0.4 25%	0.1-0.6 17%	0.1-0.1 100%	0.2-0.3 67%	0.2-0.4 50%	0.3-0.5 60%
23	Shurna	GC	3.4-6.3 54%	-	0.1-0.1 100%	0.1-0.2 50%	0.1-0.1 100%	0.1-0.1 100%	1.1-1.9 58%	0.5-0.8 63%	0.2-0.9 22%	-	0.4-0.7 57%	0.6-0.8 75%	0.3-0.6 50%
24	Randolph	RM	2.3-5.9 39%	0 -0.1 0%	0 -0.1 0%	0.1-0.3 33%	0.3-0.5 60%	0.1-0.2 50%	0.7-2.0 35%	0 -0.1 0%	0.6-1.5 40%	0.1-0.1 100%	0.2-0.5 40%	0.2-0.4 50%	-
25	Claver	FB	1.7-3.9 44%	0 -0.1 0%	-	-	0 -0.2 0%	-	0.6-1.6 38%	0.2-0.4 50%	0.1-0.2 50%	-	0.5-0.8 63%	0.2-0.4 50%	0.1-0.1 100%
26	Yusta	IT	3.1-6.5 48%	0.5-1.2 42%	0 -0.1 0%	-	-	0.3-0.6 50%	0.8-2.1 38%	0.5-1.0 50%	0.5-0.6 83%	-	0.4-0.6 67%	0.1-0.3 33%	0.1-0.1 100%
27	Motum	VAL	2.5-4.6 54%	-	0.1-0.2 50%	0.1-0.1 100%	0.2-0.4 50%	0.1-0.2 50%	0.6-1.5 40%	0.1-0.3 33%	0.2-0.4 50%	-	0.4-0.5 80%	0.3-0.5 60%	0.4-0.5 80%
28	Clark	BUR	4.7-11.6 41%	0 -0.1 0%	0 -0.1 0%	0.4-1.3 31%	0.5-1.1 45%	0.6-1.5 40%	1.2-3.2 38%	0.4-1.1 36%	0.3-0.9 33%	0.2-0.4 50%	0.4-0.5 80%	0.2-0.4 50%	0.5-0.8 63%
29	Suarez	UNI	1.7-4.9 35%	-	-	0.1-0.3 33%	0.3-0.6 50%	0.1-0.1 100%	0.8-2.4 33%	0.1-0.2 50%	0.1-0.4 25%	0.1-0.2 50%	0.1-0.2 50%	0.2-0.3 67%	0.1-0.3 33%
30	White	IT	3.2-5.8 55%	-	0.2-0.2 100%	-	-	-	1.0-2.4 42%	-	0.8-1.2 67%	-	0.4-0.6 67%	0.8-1.0 80%	0 -0.2 0%
31	Eddie	MUR	4.7-10.5 45%	0.1-0.2 50%	-	0.1-0.2 50%	0.1-0.2 50%	0.1-0.3 33%	1.3-2.8 46%	0.3-0.6 50%	1.6-3.7 43%	0.5-0.9 56%	0.5-0.8 63%	0.1-0.3 33%	0.1-0.3 33%
32	Barreiro	ZAR	2.5-5.4 46%	-	-	-	0.3-0.3 100%	0.1-0.5 20%	0.8-2.0 40%	0.1-0.2 50%	0.1-0.3 33%	0 -0.1 0%	0.3-0.8 38%	0.4-0.5 80%	0.4-0.5 80%
33	Simonovic	UNI	2.0-4.0 50%	-	-	-	-	0 -0.5 0%	1.5-2.5 60%	-	0 -0.5 0%	-	-	0.5-0.5 100%	-
34	Smits	FB	1.2-2.9 41%	-	0.1-0.1 100%	-	0.1-0.4 25%	-	0.3-1.5 20%	-	0.1-0.1 100%	-	0.3-0.4 75%	0.2-0.2 100%	0.2-0.3 67%
35	Diez	IT	3.1-5.9 53%	-	-	0 -0.1 0%	0 -0.1 0%	-	1.4-2.9 48%	0 -0.1 0%	0.1-0.4 25%	0.1-0.1 100%	0.6-0.8 75%	0.7-1.0 70%	0.2-0.5 40%
36	Beiran	GC	3.3-6.1 54%	0.2-0.7 29%	-	-	0.4-0.5 80%	0.1-0.2 50%	1.0-2.1 48%	0.1-0.4 25%	0.5-0.6 83%	0.1-0.1 100%	0.2-0.5 40%	0.5-0.6 83%	0.1-0.2 50%
37	Waczynski	UNI	2.5-5.5 45%	0.3-0.4 75%	-	-	0 -0.1 0%	0.1-0.2 50%	0.9-2.2 41%	0.1-0.5 20%	0.5-1.1 45%	0.2-0.3 67%	0.2-0.4 50%	0.1-0.1 100%	0.1-0.2 50%
38	Morgan	JOV	2.9-6.0 48%	-	0.1-0.2 50%	0.4-0.7 57%	0 -0.1 0%	-	1.1-2.4 46%	0.2-0.5 40%	0.2-0.7 29%	0 -0.1 0%	0.3-0.4 75%	0.4-0.4 100%	0.2-0.4 50%
39	Doornekamp	VAL	1.8-4.0 45%	0 -0.1 0%	0.1-0.1 100%	0.1-0.1 100%	0.4-0.8 50%	0 -0.1 0%	0.8-1.9 42%	0.1-0.2 50%	0 -0.1 0%	0 -0.1 0%	0.2-0.3 67%	0 -0.1 0%	0.1-0.2 50%
40	Hunt	MUR	2.5-4.1 61%	-	0.6-1.0 60%	-	0.4-0.6 67%	0.1-0.1 100%	0.6-1.0 40%	0.1-0.1 100%	0 -0.1 0%	0.1-0.2 50%	0.3-0.3 100%	0.6-0.8 75%	0.4-0.8 50%
41	Bobrov	FUE	2.8-4.5 62%	-	0.9-1.2 75%	0.1-0.1 100%	0.1-0.3 33%	-	0.1-0.4 25%	0.2-0.3 67%	0.1-0.1 100%	0 -0.1 0%	0.3-0.5 60%	0.7-1.0 70%	0.4-0.5 80%
42	Walker	AND	2.7-6.4 42%	0.4-1.0 40%	-	-	-	0.1-0.2 50%	0.6-1.8 33%	0.2-0.3 67%	0.1-0.8 13%	0.1-0.3 33%	1.0-1.4 71%	0.1-0.3 33%	0 -0.1 0%
43	Mockevicius	FUE	3.0-4.8 63%	-	1.0-1.4 71%	-	0.1-0.5 20%	0.1-0.1 100%	-	0.1-0.2 50%	0.1-0.1 100%	0.1-0.1 100%	0.1-0.3 33%	1.0-1.2 83%	0.7-1.1 64%
44	Benzing	ZAR	3.3-8.8 38%	0.1-0.5 20%	-	0.1-0.2 50%	0.7-1.6 44%	0.1-0.4 25%	0.9-2.5 36%	0.2-0.6 33%	0.7-1.7 41%	0 -0.3 0%	0.4-0.7 57%	0 -0.1 0%	-
45	Sy	AND	2.3-4.0 58%	0 -0.1 0%	0.1-0.1 100%	-	-	0.1-0.1 100%	0.7-1.5 47%	0.1-0.3 33%	0.3-0.4 75%	0.2-0.2 100%	0.6-0.7 86%	0.2-0.2 100%	0.2-0.4 50%
46	Kanter	JOV	2.2-4.7 47%	-	0.4-0.9 44%	0.3-0.4 75%	0.1-0.5 20%	0.1-0.1 100%	0.2-0.7 29%	0.3-0.4 75%	0.1-0.1 100%	-	0.1-0.2 50%	0.5-0.6 83%	0.2-0.7 29%
47	Brodziansky	OC	4.4-8.1 54%	-	0.2-0.2 100%	0.7-1.5 47%	0.9-2.0 45%	0.1-0.1 100%	0.7-1.7 41%	0.2-0.3 67%	0.4-0.7 57%	0.1-0.1 100%	0.3-0.3 100%	0.7-0.7 100%	0.3-0.5 60%







Guards

		Field goals		Pick'n'rolls Handler		Pick'n'rolls Roller		Pick'n'pops		Post ups		Isolations		Catch and shoots		Catch and drives		Screen off		Hand off		Transitions		Cuts		Putbacks				
1	Mekel	UNI	3.0-8.0	38%	1.0-4.0	25%	-	-	-	0	-1.0	0%	1.0-1.0	100%	-	0	-1.0	0%	-	-	1.0-1.0	100%	-	-	-	-				
2	Heurtel	FB	3.5-8.0	44%	0	-2.0	0%	-	-	-	-	0.5-1.5	33%	1.0-1.5	67%	0.5-0.5	100%	-	-	-	-	1.5-1.5	100%	-	-	-	-			
3	Green	RB	8.0-14.8	54%	1.8-3.0	60%	-	-	-	0.3-0.3	100%	1.8-3.8	47%	1.3-2.3	57%	0.3-0.5	60%	0.5-1.5	33%	0.3-0.5	60%	1.0-2.0	50%	0.8-0.8	100%	0.3-0.3	100%			
4	Thompson	ZAR	3.0-5.5	55%	-	-	1.0-1.5	67%	-	0	-0.5	0%	-	-	0.5-1.0	50%	-	-	-	-	0.5-0.5	100%	0	-1.0	0%	1.0-1.0	100%			
5	Lull	RM	4.2-9.8	43%	2.0-4.4	45%	-	-	-	-	-	0.1-0.6	17%	0.8-1.4	57%	0	-0.1	0%	0.4-1.3	31%	0	-0.1	0%	0.9-1.6	56%	-	0.1-0.1	100%		
6	Henry	BAS	4.5-8.7	52%	2.0-3.6	56%	-	-	-	0.2-0.4	50%	0.5-1.3	38%	0.6-1.1	55%	0.3-0.6	50%	0.1-0.1	100%	0.1-0.1	100%	0.6-1.1	55%	0.1-0.1	100%	0.2-0.3	67%			
7	Campazzo	RM	2.8-7.2	39%	1.4-3.6	39%	-	-	-	-	-	0.1-0.6	17%	0.4-1.4	29%	0.1-0.1	100%	0.3-0.3	100%	0	-0.1	0%	0.5-0.8	63%	0.1-0.1	100%	-			
8	Booker	MUR	7.5-18.1	41%	3.3-7.8	42%	-	-	-	-	-	1.2-3.4	35%	0.4-1.0	40%	0.3-0.7	43%	0.5-1.2	42%	0.6-0.9	67%	0.8-2.4	33%	0.2-0.2	100%	0.1-0.2	50%			
9	Delaney	FB	3.1-7.3	42%	1.1-3.0	37%	-	-	-	0	-0.1	0%	0.5-0.9	56%	0.6-1.2	50%	0.2-0.2	100%	0.1-0.3	33%	0.3-0.6	50%	0.4-0.7	57%	0	-0.1	0%	0.1-0.3	33%	
10	Huertas	IT	4.9-10.5	47%	3.1-6.7	46%	-	-	-	-	-	0.2-0.7	29%	0.5-1.4	36%	0.3-0.5	60%	0.1-0.1	100%	0.2-0.4	50%	0.3-0.6	50%	0.1-0.1	100%	0.1-0.1	100%			
11	Higgins	FB	3.8-8.6	44%	1.4-3.3	42%	-	-	-	0.1-0.2	50%	0.2-0.4	50%	0.6-1.1	55%	0.1-0.4	25%	0.1-0.3	33%	0.1-0.8	13%	0.7-1.1	64%	0.3-0.4	75%	0.1-0.2	50%			
12	Hannah	AND	3.7-8.2	45%	1.8-3.6	50%	-	-	-	-	-	0.3-1.0	30%	0.4-0.9	44%	0.2-0.6	33%	0.2-0.5	40%	0.3-0.4	75%	0.5-1.0	50%	-	-	0	-0.1	0%		
13	Van Rossom	VAL	2.9-5.9	49%	0.9-2.0	45%	-	-	-	-	-	0.2-0.3	67%	0.6-1.5	40%	0.1-0.4	25%	0.2-0.3	67%	0.1-0.2	50%	0.6-0.8	75%	0	-0.1	0%	0.1-0.1	100%		
14	Carroll	RM	3.9-8.6	45%	0.1-0.5	20%	-	0.1-0.1	100%	-	-	0.1-0.2	50%	0.8-1.6	50%	0.6-1.2	50%	1.4-3.2	44%	0.1-0.3	33%	0.3-0.7	43%	0.3-0.6	50%	0.2-0.3	67%			
15	Laprovittola	RM	2.0-4.9	41%	1.0-2.3	43%	-	-	-	-	-	0.1-0.5	20%	0.3-0.7	43%	0.2-0.3	67%	0	-0.4	0%	0	-0.1	0%	0.3-0.5	60%	-	-			
16	Loyd	VAL	4.4-9.5	46%	0.9-2.3	39%	-	0	-0.1	0%	0	-0.1	0%	0.1-0.5	20%	0.9-1.6	56%	0.4-1.1	36%	0.3-1.1	27%	0.2-0.7	29%	0.9-1.3	69%	0.2-0.3	67%	0.2-0.2	100%	
17	Shields	BAS	4.1-9.0	46%	0.5-1.5	33%	-	0	-0.1	0%	0.1-0.2	50%	0.1-0.4	25%	0.9-2.1	43%	0.6-1.2	50%	0.6-1.2	50%	0	-0.2	0%	0.7-1.1	64%	0.2-0.4	50%	0.2-0.6	33%	
18	Prepelic	JOV	6.7-14.5	46%	0.7-1.6	44%	-	0	-0.1	0%	-	0.4-0.9	44%	0.7-1.7	41%	0.3-0.7	43%	1.8-4.2	43%	0.9-2.1	43%	0.7-1.3	54%	1.0-1.3	77%	0.1-0.1	100%			
19	Ennis	ZAR	3.9-9.1	43%	1.0-3.3	30%	-	-	-	0	-0.3	0%	0.3-0.5	60%	0.7-1.3	54%	0.1-0.4	25%	0.2-0.7	29%	0	-0.1	0%	1.1-1.9	58%	0.2-0.3	67%	0.1-0.1	100%	
20	Christon	BAS	3.5-6.8	51%	1.5-1.8	83%	-	-	-	-	-	0.3-0.5	60%	0.8-2.3	35%	0.5-0.8	63%	0	-0.3	0%	0.3-0.3	100%	0	-0.3	0%	0	-0.5	0%	0.3-0.3	100%
21	Causeur	RM	2.5-5.4	46%	0.6-1.3	46%	-	-	-	-	-	0	-0.1	0%	0.3-0.9	33%	0.4-1.1	36%	0.2-0.5	40%	0.1-0.1	100%	0.7-1.0	70%	0.1-0.2	50%	0.1-0.1	100%		
22	Bouteille	UNI	6.6-12.6	52%	1.5-3.2	47%	-	0.1-0.1	100%	0.3-0.7	43%	0.5-1.1	45%	0.7-1.4	50%	0.7-1.2	58%	0.9-2.2	41%	0.2-0.2	100%	0.9-1.2	75%	0.5-0.8	63%	0.3-0.5	60%			
23	Duran	MUR	0.3-0.7	43%	-	-	-	-	-	-	-	-	-	0.1-0.4	25%	-	-	0.1-0.1	100%	-	-	0	-0.1	0%	-	-	-	-		
24	Randle	FUE	3.0-6.0	50%	0	-1.0	0%	-	-	-	-	1.0-2.0	50%	-	-	0	-1.0	0%	-	-	-	-	2.0-2.0	100%	-	-	-	-		
25	Kuric	FB	2.7-6.6	41%	0.4-1.3	31%	-	-	-	-	-	0.2-0.4	50%	0.7-1.4	50%	0.2-0.5	40%	0.5-1.3	38%	0.2-0.7	29%	0.4-0.7	57%	0.1-0.1	100%	0.1-0.2	50%			
26	Vives	VAL	2.2-5.0	44%	0.9-1.5	60%	-	-	-	-	-	0	-0.1	0%	0.9-2.1	43%	0.1-0.2	50%	0	-0.1	0%	0.2-0.4	50%	0	-0.1	0%	0.1-0.2	50%		
27	Sharif-Cook	GC	2.4-6.4	38%	1.2-2.7	44%	-	-	-	-	-	0.3-0.3	100%	0.6-2.2	27%	0.1-0.1	100%	0.1-0.2	50%	0.2-0.4	50%	0	-0.2	0%	0	-0.1	0%	0.1-0.1	100%	
28	Fernandez	UNI	3.1-7.6	41%	1.4-3.4	41%	-	-	-	-	-	0.3-0.8	38%	0.5-1.6	31%	0.1-0.2	50%	0.1-0.4	25%	0.2-0.2	100%	0.2-0.7	29%	0.1-0.1	100%	0.1-0.1	100%			
29	Ribas	FB	1.4-3.3	42%	0.4-0.9	44%	-	-	-	-	-	-	-	0.6-1.5	40%	-	-	0.1-0.1	100%	0	-0.2	0%	0.3-0.5	60%	0	-0.1	0%	-		
30	Marinkovic	VAL	1.9-4.3	44%	0.5-0.8	63%	-	-	-	0	-0.1	0%	0.1-0.4	25%	0.4-1.3	31%	0.2-0.4	50%	0.1-0.2	50%	0.2-0.4	50%	0.4-0.6	67%	0.1-0.1	100%	-	-		
31	Harper	GC	4.9-10.8	45%	1.2-3.3	36%	-	0.1-0.1	100%	0.1-0.1	100%	0.3-0.8	38%	1.0-1.6	63%	0.4-0.9	44%	0.6-1.2	50%	0.2-0.6	33%	0.7-1.4	50%	0.3-0.4	75%	0.1-0.2	50%			
32	San Emeterio	VAL	2.4-5.4	44%	0.2-0.6	33%	-	-	-	0.7-0.9	78%	0.1-0.3	33%	0.6-1.5	40%	0.1-0.3	33%	0.2-0.5	40%	0.1-0.3	33%	0.2-0.4	50%	0.2-0.3	67%	0.2-0.3	67%			
33	Seeley	ZAR	3.6-8.2	44%	0.9-2.6	35%	-	-	-	0.2-0.3	67%	0.3-0.6	50%	0.7-1.4	50%	0.2-0.6	33%	0.4-0.8	50%	-	-	0.5-1.2	42%	0.3-0.4	75%	0.1-0.2	50%			
34	Colom Barrufet	VAL	2.6-6.2	42%	1.8-3.5	51%	-	-	-	-	-	0.1-0.3	33%	0.2-1.1	18%	0.1-0.1	100%	0	-0.1	0%	0.1-0.4	25%	0.2-0.5	40%	0.1-0.1	100%	-	-		
35	Bassas	BUR	2.9-6.3	46%	0.9-2.2	41%	-	-	-	-	-	0.2-0.8	25%	0.7-1.6	44%	0.1-0.1	100%	0	-0.1	0%	0.3-0.5	60%	0.2-0.5	40%	0.1-0.1	100%	0.1-0.1	100%		
36	Janning	BAS	3.1-7.4	42%	0.5-1.7	29%	-	-	-	-	-	0.1-0.4	25%	0.9-2.0	45%	0.2-0.6	33%	0.8-1.7	47%	0.1-0.2	50%	0.5-0.8	63%	-	-	-	-			
37	Adams	UNI	4.1-10.4	39%	1.6-4.0	40%	-	-	-	-	-	0.1-0.7	14%	0.9-2.7	33%	0.1-0.4	25%	0.2-0.5	40%	0.4-0.9	44%	0.5-0.7	71%	0.1-0.2	50%	0.1-0.2	50%			
38	Abrines Redondo	FB	2.1-5.1	41%	0.1-0.3	33%	-	-	-	-	-	0	-0.1	0%	0.9-2.4	38%	0.1-0.2	50%	0.4-0.8	50%	0	-0.1	0%	0.4-0.6	67%	0.2-0.4	50%	0.1-0.1	100%	
39	McFadden	BUR	4.0-9.3	43%	1.1-2.7	41%	-	-	-	-	-	0.5-1.4	36%	0.8-1.5	53%	0.2-0.5	40%	0.7-1.5	47%	0.1-0.4	25%	0.3-0.7	43%	-	-	0	-0.1	0%		
40	Colom	AND	0.2-0.4	50%	0.1-0.3	33%	-	-	-	-	-	-	-	0.1-0.2	50%	-	-	-	-	-	-	-	-	-	-	-	-	-		
41	Diaz	UNI	1.7-4.6	37%	0.5-1.4	36%	-	0.1-0.1	100%	-	-	0	-0.1	0%	0.7-2.0	35%	0	-0.2	0%	0	-0.2	0%	0	-0.1	0%	0.3-0.5	60%	0.2-0.2	100%	-
42	Ferrari	MAN	4.5-12.3	37%	2.3-5.8	40%	-	-	-	-	-	0	-0.8	0%	0.5-1.2	42%	0.7-1.2	58%	0.3-1.2	25%	0.2-0.8	25%	0	-0.5	0%	-	-	0.3-0.5	60%	
43	Vildoza	BAS	2.7-7.3	37%	1.8-4.0	45%	-	-	-	0	-0.1	0%	0	-0.3	0%	0.3-1.3	23%	0.1-0.3	33%	0.3-0.4	75%	0	-0.3	0%	0.3-0.4	75%	-	-	-	
44	Benite	BUR	4.4-9.9	44%	0.8-2.2	36%	-	-	-	-	-	0.3-0.7	43%	0.8-1.8	44%	0.1-0.6	17%	1.2-2.3	52%	0.4-1.0	40%	0.4-0.9	44%	0.1-0.2	50%	-	-	-		
45	Rabaseda	GC	1.6-3.1	52%	-	-	-	-	-	0	-0.1	0%	-	-	0.9-1.7	53%	0.1-0.2	50%	0.1-0.2	50%	0.1-0.1	100%	0.1-0.3	33%	0.4-0.4	100%	0	-0.1	0%	
46	Lundberg	IT	2.4-5.4	44%	0.6-1.6	38%	-	-	-	-	-	0.2-0.5	40%	0.4-1.1	36%	0.3-0.5	60%	0.1-0.4	25%	0.1-0.1	100%	0.6-0.7	86%	0.1-0.1	100%	0.1-0.3	33%			
47	Brizuela	UNI	4.4-10.1	44%	1.3-3.3	39%	0.1-0.1	100%	-	-	-	0.6-1.1	55%	0.9-2.2	41%	0.4-0.7	57%	0.2-0.7	29%	0.2-0.5	40%	0.7-1.2	58%	0.1-0.1	100%	0.1-0.1	100%			



